



WELLINGTON COMMUNITY FIRE DISTRICT



2007 ANNUAL REPORT

The First Fire Call

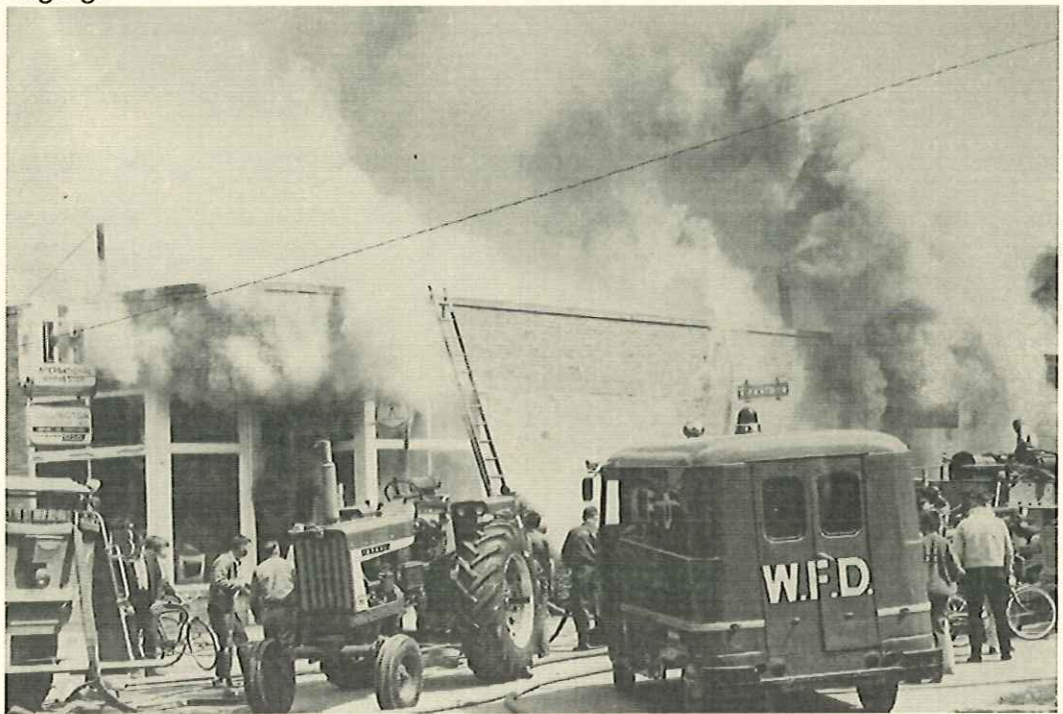
(From the July 30, 1981 Wellington Enterprise)

by Terry Mazzone

The newly organized Wellington Fire Department was behind the eight ball when it received its first call near midnight on Sunday, January 30, 1881, nine days after the Fire Department held its first organizational meeting.

The first bell was ringing in the night air. The fire, which had started on the west side of the business district, was raging.

Where was the fire engine? It was on the second story of the Doland Carriage Shop. It didn't have any wheels on it and the brakes and tongue had been removed from the horse-drawn fire engine in order to get it into the elevator and to the second floor, where they planned to paint the name of "E.G. Fuller" on the vehicle, in honor of the mayor.



Within 20 minutes after the bells started ringing, the firemen had replaced the wheels, tongue and brakes and the engine was ready for use.

The Fire Department's first blaze destroyed the A.H. Palmer Building, which housed the S.E. Peters grocery store and Mrs. Palmer's dressmaking shop, the Bunce Candy Stand and the Wooley Hardware store. The Post Office Building was nearly razed. All movable equipment was removed from the Wellington Enterprise's plant and stock was taken from Wight Jewelers.

Wellington Fire District 2007 Annual Report Contents

Section I Personnel

From the Chief

Wellington Fire District Board of Trustees

Wellington Fire District Personnel
Personnel Who Left in 2007

Personnel Milestones
Department Certifications
Past Firefighters of the Year Recipients

2007 Firefighter of the Year

Section II District Finances

Current Financial Status

2005 Levy Passage & Five Year Plan

Section III 2007 Incident Statistics

Incident Types

Incidents by District / Dollars Saved Versus Lost
Incident Alarm Times

Average Personnel Turnout
Calls by Day of the Week
Unit Response Summary
Train Delays

Average Response Time by District / Structure Fires
Average Response Time by District / MVA's
Average Response Time by District / First Responder Calls

Annual Incident Summary Chart

Annual Incident Dollar Loss Chart

Incidents / Dollar Loss by Township

Mutual Aid Response Summary Chart

2007 Incident Summary, Detail

Section IV 2007 Training and Activities

Training and Activity Summary

Training Analysis by Staff Summary

Training by Category Summary

Training Analysis by Staff Detail

Section I: Personnel

Mission Statement:

"Proudly serving since 1881, the Wellington Community Fire District protects the citizens and property of our six communities, by providing professional, courteous, and cost-effective fire prevention, protection, and emergency services."

Wellington Community Fire District – 2007 Year in Review

Department Profile

The Wellington Community Fire District provides emergency and non emergency response services to Brighton, Huntington, Penfield, Pittsfield, Wellington Townships and the Village of Wellington. Our service area encompasses nearly one hundred and twenty five square miles. We respond from two stations with a fleet of nine apparatus and serve a population of about 13,000.

The Wellington Community Fire District, formed in 1970, was the first of its kind in the State of Ohio. Prior to that, the Village of Wellington provided fire and emergency services not only to the Village, but also to the surrounding townships by written contract.

Fortunately, in 2006, the fire district again received FEMA's Assistance to Firefighters Grant. The \$18,000 that this grant produced, funded training programs and portable audio equipment for training and fire prevention activities. The grant is to be administered in the budget years of 2007-2008. On December 7, 2007 we received notice that our 2007 FEMA Assistance to Firefighters Grant was also approved. Again, since an emphasis on training is the cornerstone of our department, the \$11,000 grant will be used to train our personnel in Technical Rope Rescue training, and provide much-needed equipment for such activities. The grant will also be administered in the 2007-2008 budget year.

Our most important asset is our personnel. Our members have been willing to increase their training levels from the Volunteer level to the Career level and included with that they also maintain EMT certification status at various levels.

Structure Fires

In 2007 we encountered some of the most devastating structure fires and property losses in the 126 year history of the Wellington Community Fire District. On Monday, August 13, 2007, a large portion of the Wagner/POV building on Depot Street was lost to fire. The company ceased operations at the 127 year old warehouse on Depot and Main streets in January 2007. Built in 1880 for the Horr-Warner Company, this structure served various tenants during its life span. Fortunately we were able to contain the fire to the building of origin with the assistance of our mutual aid neighbors. Three 100' aerial apparatus from Wellington, Oberlin and Amherst Fire Departments battled the fire, as well as firefighters from seven different communities. We also utilized a very effective water shuttle operation to help supply the tremendous amount of water needed.

On Monday, November 12, 2007, a fire of historical proportions at the Hemlock Cottage warehouse on DeWolfe Street utilized 142 personnel from 19 communities. Due to inadequate water supply to fire hydrants in that area, our personnel had to put together one of the areas largest water tanker shuttles for fire suppression. Property losses were near \$900,000. Neighboring exposures and three automobiles were damaged by the tremendous heat. The structure/warehouse provided storage for large quantities of furniture for Hemlock Cottage, and housed Will-Do packaging, which packaged sponges for retail. *In both the POV fire and this fire, the district's newly purchased 100' aerial ladder made a significant difference in both of these fires.*

Training

During the month of April, the Wellington Community Fire District sponsored a Swiftwater 1 training class in which nine of our firefighters attended. Each member was outfitted with special swiftwater gear and now the department has thirteen trained swiftwater members. We have twenty-three firefighters trained to career level and three firefighters trained to the firefighter I level, with the balance of the roster trained to the Volunteer level. We currently have twenty-two EMT's and six First Responders. Also on our roster are certified Divers, Investigators, Inspectors, and Instructors. The Fire District Board of Trustees and I are very proud of our personnel for dedicating the many hours that they put in toward responses, training, meetings and countless hours away from their families.

Services Provided

Fire Prevention activities to children and adults, dive team, swiftwater, fire investigation, hazardous material response, fire suppression and public speaking to name a few. September 29, 2007 the firefighters sponsored a very successful food drive and donated all items collected to our local Well-Help organization. Additionally, our "Firefighters Chili Cook Off Team" donated nearly \$400 cash to Well-Help.

Without the support of the Wellington Community Fire District Board of Trustees and our taxpayers it would make it very difficult to maintain the training levels that we achieve and keep quality apparatus available for responding to the needs of our communities.

Robert J. Walker, Fire Chief

January 16, 2008

Evolution of Our Volunteer Fire Department and Joint Fire District

By Harrison Comstock

For many years it was financially impossible for the village or for any single township surrounding us to have its own fire department even though it was manned by an all volunteer staff or dedicated people. The answer came early on that the Village of Wellington and the Townships of Brighton, Huntington, Penfield, Pittsfield, and Wellington would go together to provide this important service.

The vehicles were based in the village since it was the central point and the volunteers were employed by business and industry located here. The Village paid for the operations and the purchase of equipment initially but semi-annually would submit a bill to each of the other participants for their prorated share. This system worked for many years and was accepted by all residents. During this period the trucks and equipment were rather limited

Brighton Township:	Chris Stanfield
Huntington Township:	Walter Rollin
Penfield Township:	Richard Conrad
Pittsfield Township:	Mark Diedrick (Vice President)
Wellington Township:	Calvin Woods
Wellington Village:	Fred Alspach (President)
Clerk:	Vanya Hales
Legal Council:	McCray, Muzilla, Smith, Meyers

and a working pumper could be purchased for a reasonable price as it was a fairly simple apparatus. Hose and ladders were added to an existing truck body painted red and sent out for service.

As time went on, however, the trucks became much more sophisticated, complicated and necessarily more expensive. The costs increased to such an extent that none of the participating bodies could afford them from their limited general funds.

It was then that our local chief, Bill Weber, and several others approached Congressman Don Pease who was at that time our representative to the Ohio General Assembly. Through all of their efforts a law was enacted to permit the formation of a Joint Fire District as a separate and distinct taxing authority with the tax base being that of all those who joined in.

Resolutions were adopted by all named governing bodies to form the Wellington Community Joint Fire District and I believe this was the first one formed in the State of Ohio. Each participating unit has a representative on the Board of Trustees of the Joint District and their duties and methods of operation were established by vote of that body in accordance with the new laws.

The District, however, had no money, no budget and little actual knowledge of what was to be expected of it. This was organized during the period of time when Federal Revenue Sharing was taking place and each body had some of these funds on hand to be used at their discretion. Each unit paid into the District \$1,000 from their Revenue Sharing money to provide some operating funds until such time as a formal budget could be adopted, and an annual budget prepared for the coming year. Once this latter was completed the Lorain County Auditor's office was contacted to determine what a proper levy amount would be required to provide the funds necessary. This levy question was then presented to all voters in all the member areas along with information on what the funds would be spent for in the next succeeding five year period.

One of the provisions of the new law regarding the proceeds of a levy raised in this manner allows the Board of Trustees to borrow a percentage of the revenue from that levy in anticipation of its receipt. As soon as the electorate gave its approval of the proposed levy a loan was obtained to provide the operating funds for the next succeeding period of time. This same procedure continues today with the presentation of a proposed levy each five years the District remains as a separate taxing body.

At the same time these governments were demanding more and more of our local personnel they were reducing the services of the State Fire Marshal and others for local problems, inspections and investigations. It also required many more hours of required training for all the personnel of the department and as the result we now have two paid people to carry out the every day operations while we still rely upon a dedicated staff of volunteers who devote many hundreds of hours to the work of the department and to their own skills improvement.

It takes a well organized and fully trained organization to do what these people do for us and I am sure we are all grateful for all they do and for the understanding employers of these persons who permit them to leave their employment when duty calls. The entire Wellington area can well be proud of the department it now has and of the service they provide, sometimes at the expense of missed suppers, kid's ball games and family picnics and otherwise quiet family times while they attend class to learn of new developments not only in fire fighting but in dealing with chemical spills and all the other situations declared to be emergencies.

Wellington Fire District Personnel / Year Hired

Chief	Robert Walker, Full-time	1973	
Assistant Chief	Mike Wetherbee	1986	
Captain	Jim Clark	1977	
Lieutenant	Bill Brown, Full-time	1991	
Lieutenant	Troy Pitts	1992	<i>"Firefighter of the Year" 2000</i>
Lieutenant	Brian Slack	2000	<i>"Firefighter of the Year" 2004</i>
Firefighter	Gordy Lent	1980	<i>"Firefighter of the Year" 2002</i>
Firefighter	George Gardner	1984	
Firefighter	Scott Regal	1987	
Firefighter	Dave Crawford	1988	<i>"Firefighter of the Year" 2001</i>
Firefighter	Frank Marley	1988	
Firefighter	Dave Fisher	1991	
Firefighter	Greg Frenk	1996	
Firefighter	Casey Moore	1996	
Firefighter	John Clawson	1997	
Firefighter	Chad Regal	1998	
Firefighter	Derick Oswald	1998	
Firefighter	Bill Watters	1998	
Firefighter	Dan Shinsky	1998	
Firefighter	Bryan Hamer	1999	<i>"Firefighter of the Year" 2003</i>
Firefighter	Chris Brasee	1999	
Firefighter	Bill Wolf	2000	
Firefighter	Tim Polen	2001	<i>"Firefighter of the Year" 2007</i>
Firefighter	Ethan Little	2002	
Firefighter	Steve Higgins	2004	
Firefighter	Dan Twining	2004	
Firefighter	Ed Thorn	2004	
Firefighter	Thadd Hinkle	2004	
Firefighter	Randy Butler	2005	
Firefighter	Jeremy Boggs	2005	
Firefighter	Darin Lewis	2006	
Firefighter	Craig Johnson	2006	
Dispatcher/Firefighter	Bill Varner	2005	
Rescue Diver/Firefighter	Kraig Farnsworth	1987	

Personnel Who Left in 2007

No personnel left in 2007

Personnel Milestones in 2007

Firefighter	Ethan Little	5 Years
Firefighter	John Clawson	10 Years
Firefighter	Scott Regal	20 Years
Assistant Chief	Mike Wetherbee	22 Years
Firefighter	George Gardner	24 Years
Firefighter	Gordy Lent	28 Years
Captain	Jim Clark	31 Years
Chief	Robert Walker	35 Years

Departmental Certifications

Firefighter II Level	23
Firefighter I Level	3
Firefighter 1A Level	8
Fire Instructors	2
Fire Safety Inspectors	13
Advanced Arson Investigators	4
Haz Mat Technicians	3
E.M.T. - Paramedic	3
E.M.T. - Intermediate	1
E.M.T. - Basic	18
E.M.T. - First Responder	6

Firefighter of the Year

Troy Pitts	2000
Dave Crawford	2001
Gordy Lent	2002
Bryan Hamer	2003
Brian Slack	2004
Ben Sickels	2005, posthumously
Al "Buz" Anderson, Jr.	2006, posthumously
Tim Polen	2007

Thomas R. Ropchock Award

Recognizing the Wellington Firefighter of the Year

This award is presented to the firefighter who best exemplified the qualities of our mentor and friend, Captain Thomas R. Ropchock. The award has been chosen by the members of the Wellington Firefighter's Association, in recognition of leadership during training and on the fire ground; sacrifices of time away from family; devotion and commitment to the Fire District; and for setting a positive example for others to follow.

The 2007 Thomas R. Ropchock Firefighter of the Year award has been awarded to Firefighter Tim Polen. Tim has been a member of the department since September of 2001. Prior to serving here, Polen served for several years with the Ruggles-Troy Fire Department and has also served as an EMT-B with the Firelands Ambulance Service in New London.



Firefighter Polen has attained his Firefighter 2 certification and continues to hold his EMT-B card. Additionally, Tim has served as the department's Hazardous Materials Technician for several years, representing the department on the Lorain County HazMat Team.

Firefighter Polen has been active in several committees and is a regular shift worker in the department's on-going station coverage program. Tim is one of the department's most valuable entry firefighters and has continued to improve his skills throughout his career.

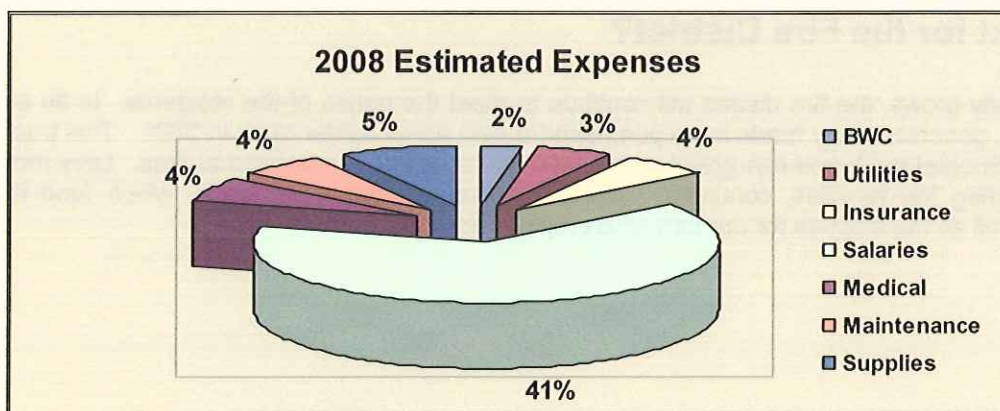
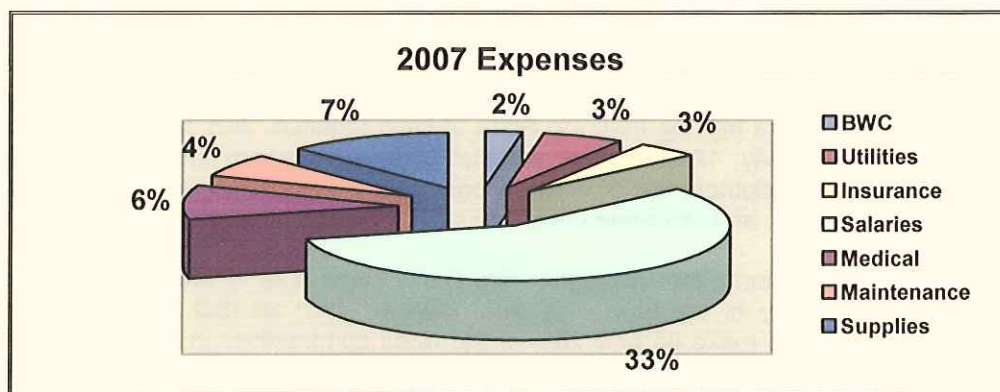


Section II: District Finances

Budget and Finance

The Wellington Fire District total budget for fiscal year 2006 was \$777,815. It is anticipated that for fiscal year 2008, the current 2.5 mill levy will generate \$672,000, and is the sole financial support for the district. Costing the owner of a \$150,000 home approximately \$115 annually, the levy funds are used for vehicle maintenance, salaries of full-time and part-time employees, building maintenance, and training.

	2004	2005	2006	2007	2008 (estimated)
Revenue:	\$603,829	\$648,767	\$777,815	\$699,781	\$672,000
Expenses:	\$555,003	\$552,852	\$566,440	\$688,859	\$651,270
Workers Compensation:	\$9,043	\$6,300	\$10,000	\$11,371	\$11,300
Utilities:	\$18,090	\$20,710	\$31,610	\$23,808	\$22,100
Insurance:	\$12,014	\$18,712	\$20,235	\$19,987	\$26,000
Salaries:	\$183,904	\$192,942	\$234,717	\$230,005	\$270,000
Medical Insurance:	\$22,459	\$25,556	\$29,738	\$39,854	\$25,000
Maintenance:	\$15,994	\$32,793	\$22,779	\$26,709	\$27,000
Supplies:	\$33,852	\$45,408	\$76,559	\$49,554	\$33,000



2005 Levy Campaign

On May 3, 2005 residents in Village of Wellington, Brighton, Huntington, Penfield, Pittsfield and Wellington townships were asked and overwhelming passed a five-year, 2.50 mill replacement levy for the Wellington Community Fire District. This levy, as in the past, appeared on the ballot as a replacement issue. The board of trustees, which represent the village and each township, opted to replace the 2000 levy, which expired in December of 2005, with a reduced 2.5 mill levy. Figures from the Lorain County Auditor showed that the levy will cost the typical homeowner approximately \$20.64 extra each year.

What has been accomplished since 2000?

As promised in the 2000 levy promotion, the fire district hired its first full-time firefighter to join the fire chief. The addition of one firefighter during the daytime, allows for simple calls to be handled without requiring other firefighters to leave their primary jobs, handling of general office duties, equipment maintenance, fire prevention programs for local groups, and quicker responses to emergency calls. The average response time in 2000 was 8:17, whereas in 2006 the average response time was 6:43.

Also purchased with levy funds was a 2001 first-line pumper truck, which responds to 96% of all fire calls. Additionally, the 1980 Chevrolet step van was replaced by a safer, more efficient International rescue truck, allowing up to seven firefighters to dress, while being safely secured with seatbelts.

Through Chief Walker's tenure as fire chief, training has been a priority with the Wellington Fire District. Today's firefighters average nearly 135 hours of training annually.

Fire Levy Summary	
Millage.....	2.50
Length.....	5 years
Generates Annually.....	\$ 653,042
Annual Cost for \$150,000 home.....	\$ 114.84

Today's firefighters must be multi-skilled in not only fire suppression, but also, vehicle extrication, hazardous materials response, confined space rescue, water rescue, and emergency medical training. Of the 34 members on the roster, 26 firefighters have more training than the State of Ohio requires, with 19 having the highest possible training for a firefighter. Additionally, 19 firefighters are also Basic Emergency Medical Technicians, one is an Intermediate E.M.T., and three firefighters are also Paramedics. The department also has several water rescue divers, eleven fire safety inspectors, and two State Certified Fire Instructors.

Through these and many other efforts, the Wellington Fire District was able to lower insurance class ratings in 2002. The Village and a majority of the townships were lowered from an ISO Class 6 to an ISO Class 5. Communities with a 1-5 ISO rating make up only 26% of the rated communities in the United States. Your Fire Department is in very good company! The ISO designation is used by insurance companies to determine house insurance rates. The bottom line is the lower the number, the cheaper home insurance premiums.

What's next for the Fire District?

As our community grows, the fire district will continue to meet the needs of the residents. In an effort to continue moving forward, generated levy funds have purchased a new aerial ladder truck in 2006. This truck replaced a 30 year old, 1976 Snorkel truck and has greatly increased operational effectiveness at fires. Levy money will also be used for upgrading the facilities, continued training, and annual operating funds, which fund the two full-time personnel, as well as the salaries for our part-time employees.

Section III: Incident Statistics

Incident Types

	2003	2004	2005	2006	2007	2007 %
Vehicle Accident	82	87	79	98	88	23%
Good Intent	25	25	42	36	54	14%
False Alarms	52	39	42	41	52	14%
Medical Assist	47	66	65	89	52	14%
Hazardous Condition	37	38	46	56	44	12%
Building Fire	22	22	15	27	19	5%
Fire, other	20	15	9	12	15	4%
Miscellaneous	31	39	30	12	14	4%
Vehicle Fire	9	9	11	8	11	3%
Carbon Monoxide	16	15	14	6	10	3%
Grass Fire	10	6	13	13	9	2%
Unauthorized Burning	18	18	16	15	8	2%
Chimney Fire	3	1	9	3	4	1%
Water/Ice Rescue	0	4	2	8	4	1%
Animal Rescue	0	4	3	4	1	<1%
Severe Weather	3	3	1	3	0	0%
Overpressure	1	1	0	0	0	0%

Incidents by District / Dollars Saved Versus Lost

	Prior Value	\$\$ Lost	\$\$ Saved	% Saved
Brighton Township	\$482,800	\$11,100	\$471,700	98%
Huntington Township	\$107,300	\$3,500	\$103,800	97%
Penfield Township	\$283,420	\$500	\$278,420	99%
Pittsfield Township	\$442,100	\$750	\$441,350	99%
Wellington Township	\$910,400	\$5,000	\$905,400	99%
Wellington Village	\$10,656,100	\$556,250	\$10,099,850	95%

Incident Alarm Time

	2001	2002	2003	2004	2005	2006	2007
6:00 am to 5:59 pm	180	185	228	236	224	284	247
6:00 pm to 5:59 am	97	107	138	138	157	147	138

Average Personnel Turnout

Shift	2001	2002	2003	2004	2005	2006	2007
Day Shift	11	8	7	7	6	7	8
Night Shift	13	13	11	10	10	9	9
All Calls	11	9	9	11	11	10	10
Officer Calls	3	3	2	3	3	2	2
First Responder	2	4	4	4	4	3	4
Structure Fire	11	12	15	14	15	13	15
Alarms	9	8	10	7	8	7	7
Overall Average	9	8	9	8	8	7	8

Calls by Day of Week

	2002		2003		2004		2005		2006		2007	
Sunday	40	13.7%	50	13.9%	44	11.7%	53	13.8%	50	11.6%	43	11.2%
Monday	33	11.3%	49	13.6%	44	11.7%	59	15.4%	67	15.5%	78	20.3%
Tuesday	46	15.8%	54	15.1%	68	18.1%	57	14.8%	58	13.5%	55	14.3%
Wednesday	53	18.1%	54	15.1%	61	16.3%	51	13.3%	62	14.4%	47	12.2%
Thursday	39	13.3%	55	15.2%	53	14.1%	55	14.3%	81	18.8%	55	14.3%
Friday	43	14.7%	46	12.8%	62	16.5%	54	14.0%	57	13.2%	60	15.6%
Saturday	38	13.0%	50	13.9%	42	11.2%	52	13.5%	56	13.0%	47	12.2%

Unit Response Summary

	2001	2002	2003	2004	2005	2006	2007
Engine 150	125	46	50	38	39	59	30
Ladder 151	N/A	N/A	N/A	N/A	N/A	48	56
Truck 152	78	73	96	106	156	184	146
Engine 153	14	148	195	180	167	211	206
Rescue 154	151	128	157	137	122	144	131
Rescue 156	134	131	157	153	150	176	161
Tanker 157	15	36	35	22	31	41	27
Snorkel 158	9	23	25	17	18	5	n/a
Command 159	119	83	127	115	156	84	86

Unit Response Delays Due to Trains

	2001	2002	2003	2004	2005	2006	2007
Train Delays	18	12	17	31	22	14	4

Average Response Time by District, Structure Fires

	2002	2003	2004	2005	2006	2007
Brighton Township	N/A	7:00	10:00	10:00	9:00	6:00
Huntington Township	8:20	7:15	6:00	9:00	8:48	10:00
Penfield Township	5:20	7:40	7:30	8:00	N/A	6:30
Pittsfield Township	8:30	8:00	6:00	7:00	10:40	9:00
Wellington Township	7:00	5:00	2:00	5:00	5:20	5:40
Wellington Village	3:00	2:50	2:44	3:30	2:05	2:05

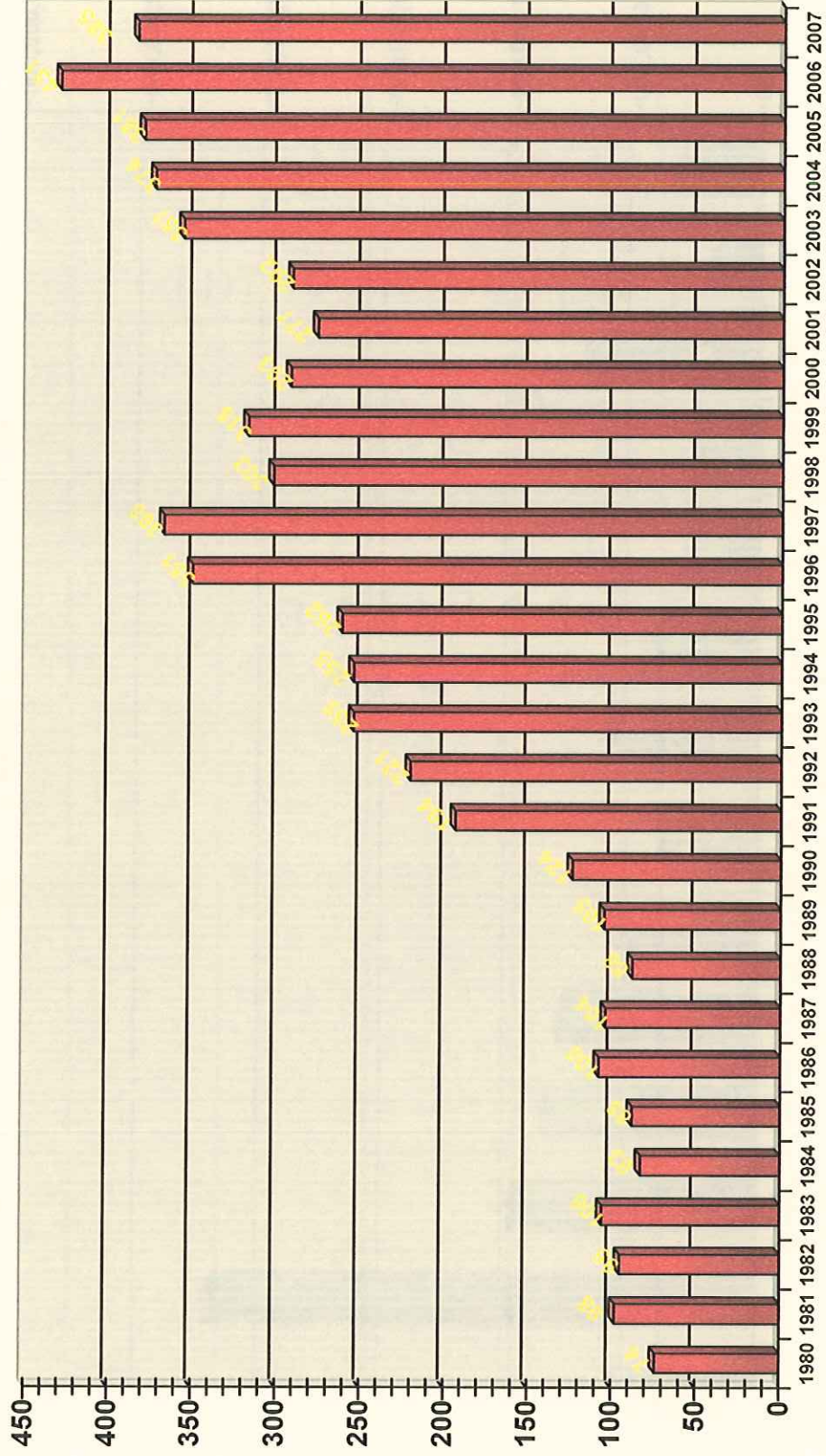
Average Response Time by District, Motor Vehicle Accidents

	2002	2003	2004	2005	2006	2007
Brighton Township	9:10	6:00	8:30	8:00	6:30	7:00
Huntington Township	8:50	6:50	8:40	8:00	7:51	8:32
Penfield Township	7:20	5:50	8:00	7:25	7:08	7:17
Pittsfield Township	8:10	6:20	7:55	8:30	9:02	8:55
Wellington Township	4:15	4:10	4:10	4:20	5:48	3:45
Wellington Village	2:30	3:40	3:25	2:50	3:30	2:12

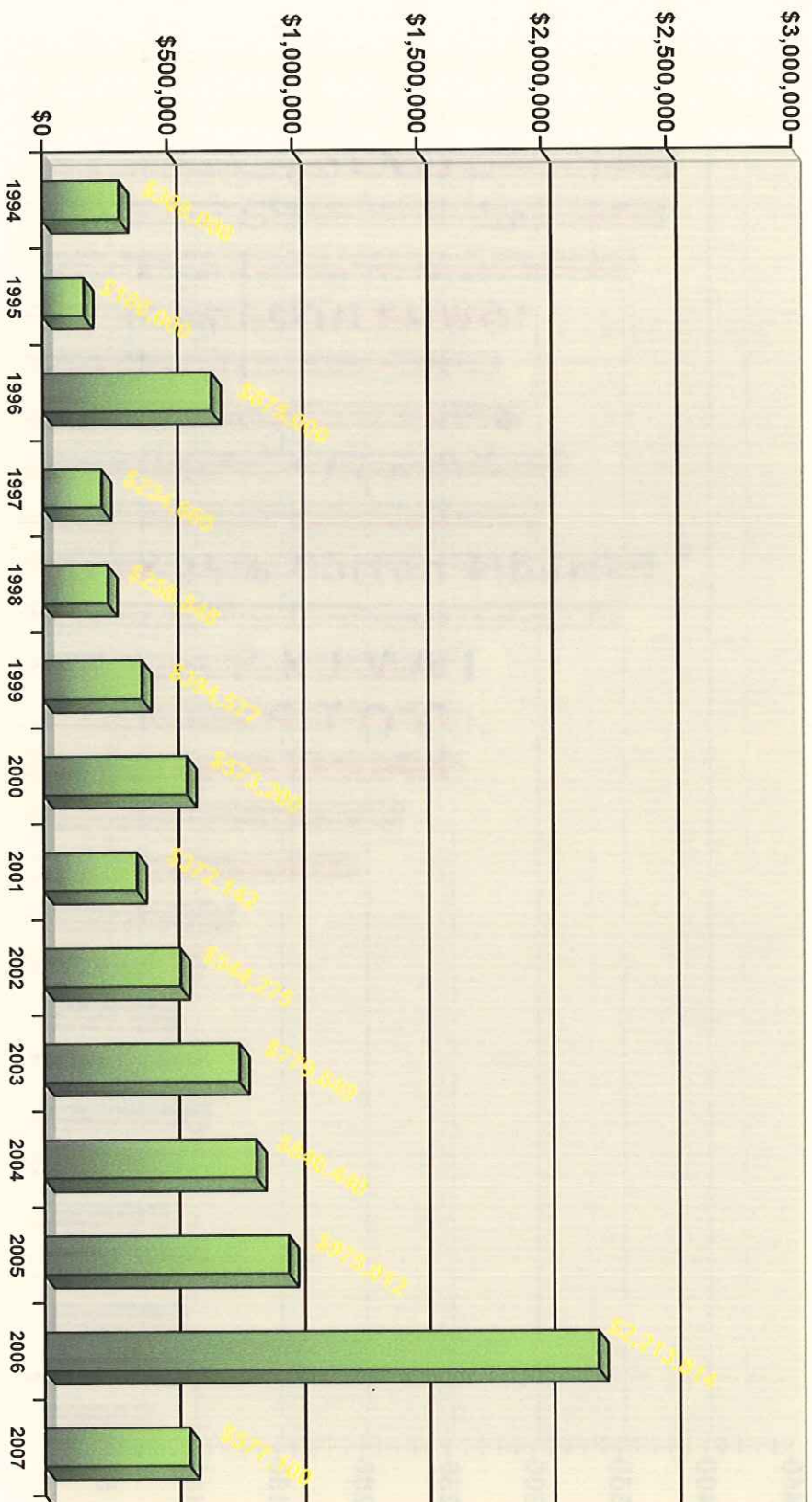
Average Response Time by District, First Responder Calls

	2002	2003	2004	2005	2006	2007
Brighton Township	9:00	7:00	7:45	N/A	10:30	9:00
Huntington Township	4:00	9:00	10:00	7:35	10:40	n/a
Penfield Township	11:00	8:00	7:36	N/A	9:12	6:40
Pittsfield Township	7:00	8:45	10:10	8:45	6:30	6:00
Wellington Township	1:40	4:00	3:00	3:30	5:20	7:00
Wellington Village	3:45	2:50	2:24	3:00	2:52	2:44

Annual Incidents Summary



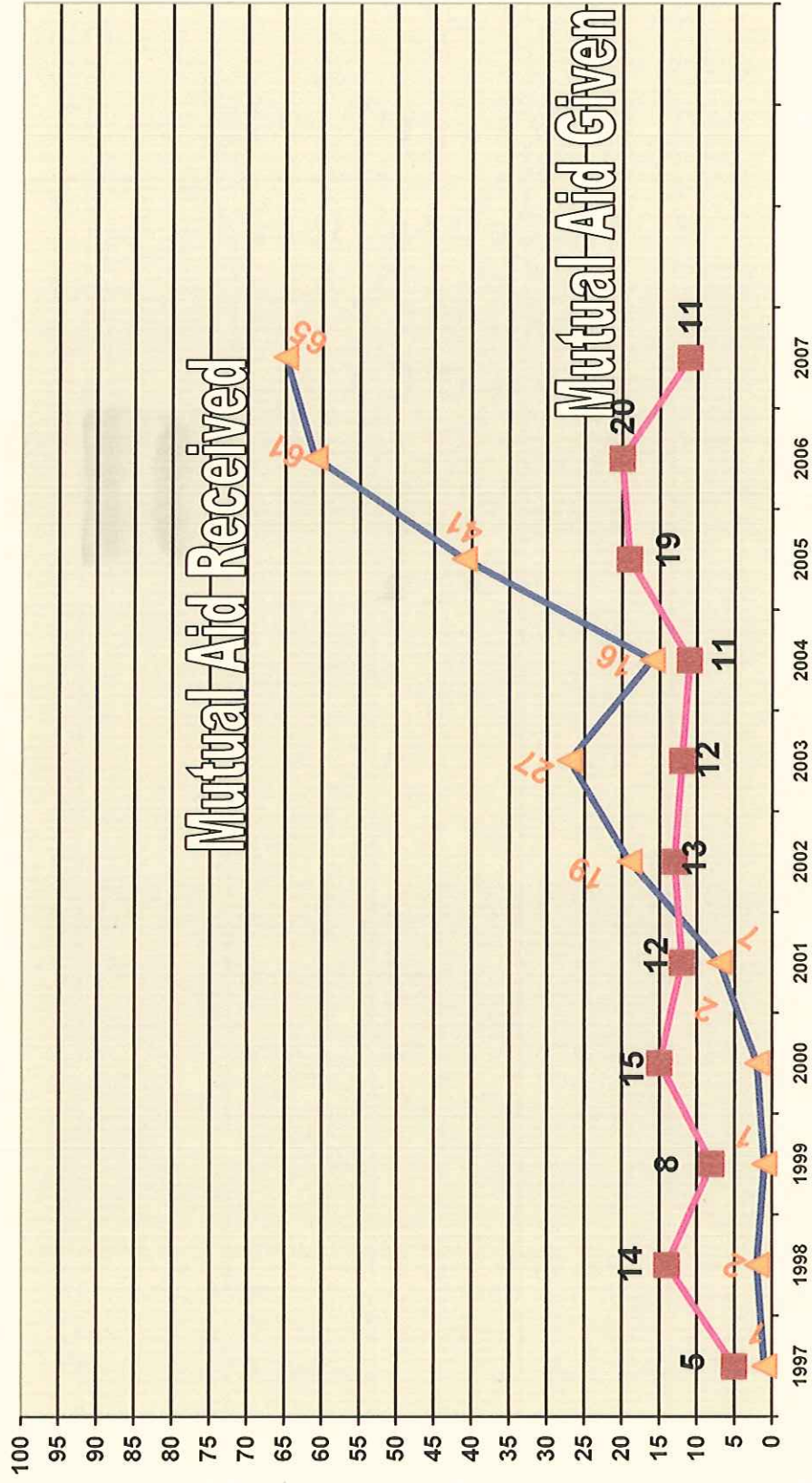
Incident Dollar Loss Summary



**Wellington Fire District
Annual Incidents / Dollar Loss
By Township**

Brighton Township	2002	2003	2004	2005	2006	2007
Incidents	14	16	15	15	23	21
\$ Loss	\$19,500	\$10,000	\$79,500	\$0	\$290,000	\$11,100
Huntington Township	2002	2003	2004	2005	2006	2007
Incidents	30	34	43	46	38	29
\$ Loss	\$50,000	\$220,104	\$23,900	\$1,700	\$373,204	\$3,500
Penfield Township	2002	2003	2004	2005	2006	2007
Incidents	34	39	39	41	46	36
\$ Loss	\$57,581	\$50,897	\$60,000	\$5,000	\$0	\$500
Pittsfield Township	2002	2003	2004	2005	2006	2007
Incidents	50	55	60	56	69	53
\$ Loss	\$407,924	\$256,622	\$77,500	\$671,237	\$344,800	\$750
Wellington Township	2002	2003	2004	2005	2006	2007
Incidents	49	47	41	48	61	44
\$ Loss	\$0	\$133,919	\$200,967	\$15,700	\$735,500	\$5,000
Wellington Village	2002	2003	2004	2005	2006	2007
Incidents	92	148	157	156	171	179
\$ Loss	\$9,000	\$108,307	\$404,573	\$281,375	\$470,310	\$556,250

Mutual Aid Response Summary



WELLINGTON FIRE DISTRICT
Monthly Incident Report
Alarm Date Between {01/01/2007} And {12/31/2007}

Incident-Exp#	Alm Date	Twp/Village	Location	Incident Type
07-0000001-000	01/03/2007	HSE	44517 STATE RTE 162	111 Building fire
07-0000002-000	01/04/2007	VSW	136 SOUTH MAIN ST /A/H/L/S	733 Smoke detector activation due to malfunction
07-0000003-000	01/05/2007	PINE	SR 20 EAST OF SR 58/OBERLIN, OH	322 Motor vehicle accident with injuries
07-0000004-000	01/06/2007	WSE	23063 STATE RTE 58	311 Medical assist, assist EMS crew
07-0000005-000	01/07/2007	VSW	125 BENNETT ST /720 SHILOH	531 Smoke or odor removal
07-0000006-000	01/08/2007	PINW	ONE MILE SOUTH OF SR 20 ON	412 Gas leak (natural gas or LPG)
07-0000007-000	01/08/2007	VNE	223 EAST HAMILTON ST	311C Medical assist, lift assist
07-0000008-000	01/08/2007	VNE	531 BARKER ST	600 Good intent call, Other
07-0000009-000	01/09/2007	VSW	139 1/2 WEST HERRICK AVE	424 Carbon monoxide incident
07-0000010-000	01/10/2007	VSE	101 WILLARD MEMORIAL SQ /A/L/SV600	600 Good intent call, Other
07-0000011-000	01/11/2007	PENW	20764 WHITEHEAD RD	113 Cooking fire, confined to container
07-0000012-000	01/12/2007	VSE	601 SOUTH MAIN ST /A/L/S	111 Building fire
07-0000013-000	01/13/2007	VNW	113 WEST ST	322 Motor vehicle accident with injuries
07-0000014-000	01/16/2007	PINE	15181 STATE RTE 58 /A/H/L/S/OBERLIN, OH	424 Carbon monoxide incident
07-0000015-000	01/16/2007	HNE	26500 HAWLEY RD	733 Smoke detector activation due to malfunction
07-0000016-000	01/20/2007	HSE	43550 NEW LONDON EASTERN RD	116 Fuel burner/boiler malfunction, fire confined
07-0000017-000	01/20/2007	PINE	45445 STATE RTE 20 /OBERLIN, OH	733 Smoke detector activation due to malfunction
07-0000018-000	01/21/2007	PINE	45445 STATE RTE 20 /OBERLIN, OH	322 Motor vehicle accident with injuries
07-0000019-000	01/23/2007	VNW	205 SHEILA DR	311C Medical assist, lift assist
07-0000020-000	01/24/2007	VSW	114 MAGYAR ST /P.O. BOX 364	412 Gas leak (natural gas or LPG)
07-0000021-000	01/25/2007	VSW	136 SOUTH MAIN ST /A/H/L/S	730 System malfunction, Other
07-0000022-000	01/26/2007	VNW	120 NORTH MILL ST	113 Cooking fire, confined to container
07-0000023-000	01/29/2007	PESE	23724 SOOY RD	311C Medical assist, lift assist
07-0000024-000	01/29/2007	VSE	124 FOREST ST /POB 386/A/S	733 Smoke detector activation due to malfunction
07-0000025-000	01/31/2007	HSE	WEST RD, 1/2 MILE SOUTH OF SR16322	322 Motor vehicle accident with injuries
07-0000026-000	02/01/2007	VSE	214 EAST HERRICK AVE /PO BOX	743 Smoke detector activation, no fire - unintentional
07-0000027-000	02/01/2007	PISE	SR 58, NORTH OF "S" CURVES	600 Good intent call, Other
07-0000028-000	02/01/2007	VSE	124 FOREST ST /POB 386/A/S	743 Smoke detector activation, no fire - unintentional
07-0000029-000	02/02/2007	PINW	15456 STATE RTE 58 /OBERLIN, OH	114 Chimney or flue fire, confined to chimney or flue
07-0000030-000	02/02/2007	PENE	21677 INDIAN HOLLOW RD	322B Vehicle accident/Life Flight
07-0000031-000	02/02/2007	BNE	49686 STATE RTE 18	118 Trash or rubbish fire, contained
07-0000032-000	02/03/2007	VSE	124 MCKINLEY ST	311 Medical assist, assist EMS crew
07-0000033-000	02/03/2007	PINE	100 YDS SOUTH OF 15456 SR	322 Motor vehicle accident with injuries
07-0000034-000	02/03/2007	PINE	100 YDS SOUTH OF HUGHES RD, SR322	322 Motor vehicle accident with injuries
07-0000035-000	02/03/2007	VNW	130 UNION ST	311 Medical assist, assist EMS crew
07-0000036-000	02/03/2007	VSW	739 PARKSIDE DR /D	118 Trash or rubbish fire, contained
07-0000037-000	02/04/2007	VNW	113 MIDDLE ST	424 Carbon monoxide incident
07-0000038-000	02/04/2007	WNE	STATE RTE 18 & WEST RD	322 Motor vehicle accident with injuries
07-0000039-000	02/05/2007	VNE	223 EAST HAMILTON ST	311C Medical assist, lift assist
07-0000040-000	02/05/2007	VNE	223 EAST HAMILTON ST	311C Medical assist, lift assist
07-0000041-000	02/05/2007	VNE	600 NORTH MAIN ST	531 Smoke or odor removal

WELLINGTON FIRE DISTRICT
Monthly Incident Report
Alarm Date Between {01/01/2007} And {12/31/2007}

Incident-Exp#	Alm Date	Twp/Village	Location	Incident Type
07-000042-000	02/06/2007	SPENCER	12596 SMITH RD /SPENCER, OH 44274	34 Carbon monoxide incident
07-000043-000	02/07/2007	PENE	20272 INDIAN HOLLOW RD	520 Water problem, Other
07-000044-000	02/09/2007	HSE	SR 58, NORTH OF NEW LONDON	322 Motor vehicle accident with injuries
07-000045-000	02/09/2007	VNE	715 BROOKSIDE CT	311 Medical assist, assist EMS crew
07-000046-000	02/09/2007	VNE	152 LINCOLN ST	311 Medical assist, assist EMS crew
07-000047-000	02/10/2007	PINE	17215 HAWLEY RD	611 Dispatched & cancelled en route
07-000048-000	02/12/2007	PITTTWP 6	45624 STATE RTE 20 /P.O. BOX	131 Passenger vehicle fire
07-000049-000	02/13/2007	VSW	115 MAGYAR ST	542 Animal rescue
07-000050-000	02/13/2007	VSW	419 PROSPECT ST	424 Carbon monoxide incident
07-000051-000	02/13/2007	SPENCER	80 CR 281 /SPENCER, OH 44275	111 Building fire
07-000052-000	02/16/2007	VNE	232 NORTH MAIN ST /2	424 Carbon monoxide incident
07-000053-000	02/17/2007	PISW	46099 MERRIAM RD	324 Motor Vehicle Accident with no injuries
07-000054-000	02/18/2007	VNE	350 MAPLE ST /A/L/SW	115 Incinerator overload or malfunction, fire confined
07-000055-000	02/19/2007	VSE	508 DICKSON ST	671 HazMat release investigation w/no HazMat
07-000056-000	02/19/2007	VNE	419 BARKER ST	322 Motor vehicle accident with injuries
07-000057-000	02/19/2007	HNW	26121 CLARK RD	600 Good intent call, Other
07-000058-000	02/20/2007	PINW	14858 STATE RTE 58 /H/OBERLIN, OH	424 Carbon monoxide incident
07-000059-000	02/21/2007	VNE	539 BARKER ST	531 Smoke or odor removal
07-000060-000	02/22/2007	VSE	508 DICKSON ST	412 Gas leak (natural gas or LPG)
07-000061-000	02/22/2007	VSE	508 DICKSON ST /4	424 Carbon monoxide incident
07-000062-000	02/23/2007	VNW	114 WEST HERRICK AVE	671 HazMat release investigation w/no HazMat
07-000063-000	02/27/2007	LAG 15	133 COMMERCE DR /LAGRANGE, OH	611 Dispatched & cancelled en route
07-000064-000	02/27/2007	PINE	16940 STATE RTE 58	410 Combustible/flammable gas/liquid condition,
07-000065-000	03/01/2007	VSW	136 SOUTH MAIN ST /A/H/L/SC	531 Smoke or odor removal
07-000066-000	03/02/2007	PINE	15491 HALLAUER RD /OBERLIN, OH	311C Medical assist, lift assist
07-000067-000	03/02/2007	VSE	145 FOREST ST	311C Medical assist, lift assist
07-000068-000	03/02/2007	HNW	46728 NEW LONDON EASTERN RD	311 Medical assist, assist EMS crew
07-000069-000	03/02/2007	HNW	46728 NEW LONDON EASTERN RD	311C Medical assist, lift assist
07-000070-000	03/03/2007	PESW	23101 STATE RTE 301	322 Motor vehicle accident with injuries
07-000071-000	03/05/2007	WSW	24011 QUARRY RD	114 Chimney or flue fire, confined to chimney or flue
07-000072-000	03/06/2007	VNE	120 MAPLE ST /A/L/SC	733 Smoke detector activation due to malfunction
07-000073-000	03/06/2007	WSE	HAWLEY RD & JONES RD	311A Medical assist, Lifelight Landing Zone
07-000074-000	03/07/2007	VSE	111 MCKINLEY ST	511 Lock-out
07-000075-000	03/07/2007	HNE	WEST RD AT THE W&LE RR	322A Vehicle accident
07-000076-000	03/07/2007	ROC 13	STATE RTE 511	611 Dispatched & cancelled en route
07-000077-000	03/08/2007	VNE	311 MAPLE ST /A	412 Gas leak (natural gas or LPG)
07-000078-000	03/08/2007	VNE	311 MAPLE ST /A	412 Gas leak (natural gas or LPG)
07-000079-000	03/12/2007	OFD 14	44050 RUSSIA RD /OBERLIN, OH 44074	611 Dispatched & cancelled en route
07-000080-000	03/13/2007	VNE	223 EAST HAMILTON ST	311C Medical assist, lift assist
07-000081-000	03/14/2007	VNE	223 EAST HAMILTON ST	311C Medical assist, lift assist
07-000082-000	03/14/2007	LAG 15	57 BASS CT /LAGRANGE, OH 44050	611 Dispatched & cancelled en route

WELLINGTON FIRE DISTRICT
Monthly Incident Report
Alarm Date Between {01/01/2007} And {12/31/2007}

Incident-Exp#	Alm Date	Twp/Village	Location	Incident Type
07-0000083-000	03/16/2007	PINE	45296 KIPTON NICKLE PLATE RD	324 Motor Vehicle Accident with no injuries
07-0000084-000	03/17/2007	VSW	139 WEST HERRICK AVE /A	711 Municipal alarm system, malicious false alarm
07-0000085-000	03/17/2007	VNE	110 WEBER CT /A/SC	311 Medical assist, assist EMS crew
07-0000086-000	03/19/2007	VSE	508 DICKSON ST	671 HazMat release investigation w/no HazMat
07-0000087-000	03/19/2007	SPENCER	10872 OLD MILL RD /SPENCER, OH	111 Building fire
07-0000088-000	03/19/2007	VSE	117 SOUTH MAIN ST /A	311 Medical assist, assist EMS crew
07-0000089-000	03/20/2007	VSE	214 EAST HERRICK AVE /PO BOX	671 HazMat release investigation w/no HazMat
07-0000090-000	03/20/2007	PINE	45445 KIPTON NICKLE PLATE RD	324 Motor Vehicle Accident with no injuries
07-0000091-000	03/22/2007	VSW	125 PARK ST	412 Gas leak (natural gas or LPG)
07-0000092-000	03/25/2007	WSW	47599 STATE RTE 18	143 Grass fire
07-0000093-000	03/26/2007	VSW	127 PARK ST	311A Medical assist, Lifeflight Landing Zone
07-0000094-000	03/26/2007	VNE	223 EAST HAMILTON ST	311C Medical assist, lift assist
07-0000095-000	03/29/2007	VNE	800 NORTH MAIN ST /H	113 Cooking fire, confined to container
07-0000096-000	03/29/2007	PINE	STATE ROUTE 58 & STATE ROUTE 302	322 Motor vehicle accident with injuries
07-0000097-000	04/02/2007	VNE	180 EAST ST	111 Building fire
07-0000098-000	04/02/2007	PENE	21939 VERMONT ST /LITCHFIELD, OH	143 Grass fire
07-0000099-000	04/03/2007	HNW	47790 STATE RTE 162	322 Motor vehicle accident with injuries
07-0000100-000	04/05/2007	HSE	27659 STATE RTE 58	324 Motor Vehicle Accident with no injuries
07-0000101-000	04/05/2007	PINE	45380 STATE RTE 20 /OBERLIN, OH	322 Motor vehicle accident with injuries
07-0000102-000	04/06/2007	VSW	210 SOUTH MAIN ST	311C Medical assist, lift assist
07-0000103-000	04/06/2007	WNE	STATE RTE 18 & WEST RD	322 Motor vehicle accident with injuries
07-0000104-000	04/07/2007	VSE	214 EAST HERRICK AVE /PO BOX	116 Fuel burner/boiler malfunction, fire confined
07-0000105-000	04/09/2007	VSE	214 EAST HERRICK AVE /PO BOX	424 Carbon monoxide incident
07-0000106-000	04/09/2007	VSE	123 FOREST ST	600 Good intent call, Other
07-0000107-000	04/09/2007	PENW	42889 PECK WADSWORTH RD	671 HazMat release investigation w/no HazMat
07-0000108-000	04/10/2007	VNW	NORTH MAIN ST & LIBERTY AVE	422 Chemical spill or leak
07-0000109-000	04/10/2007	VNE	200 MARTS PL	440 Electrical wiring/equipment problem, Other
07-0000110-000	04/11/2007	VSE	203 GRAND AVE	600 Good intent call, Other
07-0000111-000	04/13/2007	VNE	516 NORTH MAIN ST	322 Motor vehicle accident with injuries
07-0000112-000	04/13/2007	VSW	115 PROSPECT ST /A/L/SC	400 Hazardous condition, Other
07-0000113-000	04/14/2007	VSE	115 WILLARD MEMORIAL SQ /A	700 False alarm or false call, Other
07-0000114-000	04/17/2007	PENW	42780 PECK WADSWORTH RD	311C Medical assist, lift assist
07-0000115-000	04/17/2007	PINW	15456 STATE RTE 58 /OBERLIN, OH	138 Off-road vehicle or heavy equipment fire
07-0000116-000	04/17/2007	PINE	STATE RTE 58 & STATE RTE 303	600 Good intent call, Other
07-0000117-000	04/18/2007	VNE	120 MAPLE ST /102/A/L/SC	311 Medical assist, assist EMS crew
07-0000118-000	04/20/2007	PISE	45860 WEBSTER RD	412 Gas leak (natural gas or LPG)
07-0000119-000	04/21/2007	VNE	DOWNTOWN AREA	600 Good intent call, Other
07-0000120-000	04/22/2007	VSW	508 SOUTH MAIN ST /L	410 Combustible/flammable gas/liquid condition,
07-0000121-000	04/22/2007	PESW	23834 STATE RTE 301	631 Authorized controlled burning
07-0000122-000	04/26/2007	VSE	201 SOUTH MAIN ST /A/H/L	311 Medical assist, assist EMS crew
07-0000123-000	04/26/2007	PINE	STATE RTE 58 & STATE RTE 20	413 Oil or other combustible liquid spill

WELLINGTON FIRE DISTRICT
Monthly Incident Report
Alarm Date Between {01/01/2007} And {12/31/2007}

Incident-Exp#	Alm Date	Twp/Village	Location	Incident Type
07-000124-000	04/27/2007	LODI	7957 KENNARD RD /LODI, OH 44254	360 Water & ice-related rescue, other
07-000125-000	04/27/2007	PISW	18369 STATE RTE 58	322 Motor vehicle accident with injuries
07-000126-000	04/28/2007	LAG 15	42 PERCH CT /LAGRANGE, OH 44035	111 Dispatched & cancelled en route
07-000127-000	04/29/2007	VSW	642 SOUTH MAIN ST /L	311C Medical assist, lift assist
07-000128-000	04/30/2007	VSE	214 EAST HERRICK AVE /PO BOX	741 Sprinkler activation, no fire - unintentional
07-000129-000	04/30/2007	VNE	110 WEBER CT /A/SC	744 Detector activation, no fire - unintentional
07-000130-000	05/01/2007	VNE	175 EAST HERRICK AVE /A	412 Gas leak (natural gas or LPG)
07-000131-000	05/02/2007	VSW	189 DEPOT ST	561 Unauthorized burning
07-000132-000	05/05/2007	WNW	19735 PITTS RD	561 Unauthorized burning
07-000133-000	05/07/2007	WSE	43760 SMITH RD	424A CO Call-Battery Problem
07-000134-000	05/07/2007	PESW	23834 STATE RTE 301	322 Motor vehicle accident with injuries
07-000135-000	05/07/2007	VSW	120 SOUTH MAIN ST /A	733 Smoke detector activation due to malfunction
07-000136-000	05/09/2007	VNE	234 MAPLE ST /P.O. BOX 86/A/SW	311 Medical assist, assist EMS crew
07-000137-000	05/10/2007	HSW	27800 STATE RTE 58	142 Brush or brush-and-grass mixture fire
07-000138-000	05/11/2007	WSE	24475 SMITH RD	131 Passenger vehicle fire
07-000139-000	05/11/2007	VNE	230 MAPLE ST /P.O. BOX 86/A/SW	311 Medical assist, assist EMS crew
07-000140-000	05/12/2007	VNE	200 MARTS PL /E7	600 Good intent call, Other
07-000141-000	05/12/2007	WNW	46950 STATE RTE 18 /A/H	322B Vehicle accident/Life Flight
07-000142-000	05/16/2007	PINW	48199 STATE RTE 20 /A/L/SW/OBERLIN, OH	143 Cooking fire, confined to container
07-000143-000	05/16/2007	PESE	SMITH RD & STATE RTE 301	322 Motor vehicle accident with injuries
07-000144-000	05/17/2007	PINE	15181 STATE RTE 58 /A/H/L/S/OBERLIN, OH	143 Bomb scare - no bomb
07-000145-000	05/17/2007	VSW	504 SOUTH MAIN ST /PO BOX 26/H/L	422 Chemical spill or leak
07-000146-000	05/18/2007	PESE	40961 STATE RTE 18	311 Medical assist, assist EMS crew
07-000147-000	05/18/2007	VNE	814 NORTH MAIN ST /A/L/SC	131 Passenger vehicle fire
07-000148-000	05/19/2007	VSW	504 SOUTH MAIN ST /PO BOX 26/H/L	413 Oil or other combustible liquid spill
07-000149-000	05/19/2007	VNW	NORTH MAIN ST & KELLY ST	322 Motor vehicle accident with injuries
07-000150-000	05/19/2007	PINW	46789 STATE RTE 20 /OBERLIN, OH	322 Motor vehicle accident with injuries
07-000151-000	05/21/2007	VNW	305 UNION ST /A/H/L	160 Special outside fire, Other
07-000152-000	05/23/2007	VSW	322 LAKESIDE AVE	111 Building fire
07-000153-000	05/25/2007	VNE	EAST HERRICK AVE & BARKER ST	322 Motor vehicle accident with injuries
07-000154-000	05/26/2007	HSW	46850 NEW LONDON EASTERN RD	322 Motor vehicle accident with injuries
07-000155-000	05/27/2007	WSW	47875 STATE RTE 18 /A/H	743 Smoke detector activation, no fire - unintentional
07-000156-000	05/28/2007	PESW	24801 WEST RD	311A Medical assist, Lifeflight Landing Zone
07-000157-000	05/29/2007	WNW	19720 STATE RTE 58 /LOT #8	671 HazMat release investigation w/no HazMat
07-000158-000	05/29/2007	VNW	GENERAL AREA OF 316 WEST HERRICK ST	671 HazMat release investigation w/no HazMat
07-000159-000	05/29/2007	PISE	SR 58, NORTH AT THE BRIDGE	322 Motor vehicle accident with injuries
07-000160-000	05/29/2007	VNE	101 MCCORMICK ST	130 Mobile property (vehicle) fire, Other
07-000161-000	05/31/2007	PENE	19850 INDIAN HOLLOW RD	322 Motor vehicle accident with injuries
07-000162-000	06/02/2007	PINW	SR 303; 200 YDS EAST OF QUARRY	322 Motor vehicle accident with injuries
07-000163-000	06/02/2007	VNE	712 NORTH MAIN ST /H	140 Natural vegetation fire, Other
07-000164-000	06/04/2007	VSE	214 EAST HERRICK AVE /PO BOX	741 Sprinkler activation, no fire - unintentional

WELLINGTON FIRE DISTRICT
Monthly Incident Report
Alarm Date Between {01/01/2007} And {12/31/2007}

Incident-Exp#	Alm Date	Twp/Village	Location	Incident Type
07-0000165-000	06/06/2007	PINW	47773 STATE RTE 20 /OBERLIN, OH	412 Gas leak (natural gas or LPG)
07-0000167-000	06/08/2007	VNE	139 WEBER CT /A/H/L/SC	740 Unintentional transmission of alarm, Other
07-0000166-000	06/09/2007	BSW	22697 GORE ORPHANAGE RD	444 Power line down
07-0000168-000	06/10/2007	PINE	15425 HALLAUER RD /OBERLIN, OH	322 Motor vehicle accident with injuries
07-0000169-000	06/10/2007	WSW	47875 STATE RTE 18 /A/H	743 Smoke detector activation, no fire - unintentional
07-0000170-000	06/13/2007	BSW	24061 GORE ORPHANAGE RD	322 Motor vehicle accident with injuries
07-0000171-000	06/15/2007	VNE	103 WEBER CT /A/SC	733 Smoke detector activation due to malfunction
07-0000172-000	06/16/2007	LAG 15	580 OPPORTUNITY WAY /LAGRANGE	511 Dispatched & cancelled en route
07-0000173-000	06/18/2007	WSE	43813 STATE RTE 18	422 Chemical spill or leak
07-0000174-000	06/18/2007	WNE	43741 WEBSTER RD	322 Motor vehicle accident with injuries
07-0000175-000	06/19/2007	BSE	49233 STATE RTE 18	111 Building fire
07-0000176-000	06/20/2007	WNE	21185 HAWLEY RD	322 Motor vehicle accident with injuries
07-0000177-000	06/20/2007	VNE	223 EAST HAMILTON ST	311C Medical assist, lift assist
07-0000178-000	06/20/2007	VNE	110 WEBER CT /A/SC	733 Smoke detector activation due to malfunction
07-0000179-000	06/21/2007	PISW	18740 PITTS RD	561 Unauthorized burning
07-0000180-000	06/25/2007	LAG 15	508 OPPORTUNITY WAY /LAGRANGE	330 System malfunction, Other
07-0000181-000	06/25/2007	PINE	45721 STATE RTE 20 /H/OBERLIN, OH	322 Motor vehicle accident with injuries
07-0000182-000	06/25/2007	VNE	814 NORTH MAIN ST /A/L/SC	411 Gasoline or other flammable liquid spill
07-0000183-000	06/25/2007	PISW	18606 MERRIAM RD	631 Authorized controlled burning
07-0000184-000	06/27/2007	BNW	19723 GORE ORPHANAGE RD	631 Authorized controlled burning
07-0000189-000	06/28/2007	PESE	22350 INDIAN HOLLOW RD	422 Chemical spill or leak
07-0000185-000	06/28/2007	VNE	114 HAMILTON ST	733 Smoke detector activation due to malfunction
07-0000186-000	06/28/2007	PESW	OPEN FIELD, JUST SOUTH OF 22901	561 Unauthorized burning
07-0000187-000	06/28/2007	PENW	21397 WEST RD	322 Motor vehicle accident with injuries
07-0000188-000	06/28/2007	VSW	126 FOURTH ST	531 Smoke or odor removal
07-0000190-000	06/29/2007	BSE	STATE RTE 18 & STATE RTE 511	322 Motor vehicle accident with injuries
07-0000191-000	06/29/2007	WSW	46675 STATE RTE 18	322 Motor vehicle accident with injuries
07-0000192-000	07/01/2007	BNW	19723 GORE ORPHANAGE RD	140 Natural vegetation fire, Other
07-0000193-000	07/02/2007	BSE	STATE RTE 18 & STATE RTE 511	322 Motor vehicle accident with injuries
07-0000194-000	07/02/2007	PENW	19848 NICKLEPLATE DIAGONAL RD	140 Natural vegetation fire, Other
07-0000195-000	07/03/2007	WNE	44683 PECK WADSWORTH RD	600 Good intent call, Other
07-0000196-000	07/04/2007	PISW	18144 STATE RTE 58	311 Medical assist, assist EMS crew
07-0000197-000	07/05/2007	VNW	709 NORTH MAIN ST	131 Passenger vehicle fire
07-0000198-000	07/05/2007	HNW	26201 CLARK RD	444 Power line down
07-0000199-000	07/06/2007	PINW	STATE RTE 20 & QUARRY RD /OBERLIN, OH	322 Motor vehicle accident with injuries
07-0000200-000	07/06/2007	VNW	404 WEST HERRICK AVE	412 Gas leak (natural gas or LPG)
07-0000201-000	07/08/2007	PINW	48199 STATE RTE 20 /A/L/SW/OBERLIN, OH	700 False alarm or false call, Other
07-0000202-000	07/09/2007	VSW	229 CLAY ST /P.O. BOX 86/A	444 Power line down
07-0000203-000	07/09/2007	VSE	116 SOUTH MILL ST	424A CO Call-Battery Problem
07-0000204-000	07/10/2007	PISW	18291 QUARRY RD	322 Motor vehicle accident with injuries
07-0000205-000	07/12/2007	VNE	116 HAMILTON ST	311 Medical assist, assist EMS crew

WELLINGTON FIRE DISTRICT
Monthly Incident Report
Alarm Date Between {01/01/2007} And {12/31/2007}

Incident-Exp#	Alm Date	Twp/Village	Location	Incident Type
07-0000206-000	07/13/2007	HSE	27500 HAWLEY RD	160 Special outside fire, Other
07-0000207-000	07/14/2007	VSW	101 WHEELING AVE	444 Power line down
07-0000208-000	07/14/2007	HSW	RR CROSSING AT BAKER, SOUTH O	22B Vehicle accident/Life Flight
07-0000209-000	07/15/2007	PINE	44921 KIPTON NICKLE PLATE RD	360 Water & ice-related rescue, other
07-0000210-000	07/16/2007	VNW	267 NORTH MAIN ST /S	322 Motor vehicle accident with injuries
07-0000211-000	07/16/2007	BNE	49370 STATE RTE 18	561 Unauthorized burning
07-0000212-000	07/16/2007	PESW	42301 STATE RTE 18	143 Grass fire
07-0000213-000	07/18/2007	PINE	45721 STATE RTE 20 /H/OBERLIN, OH	22 Motor vehicle accident with injuries
07-0000214-000	07/19/2007	LAG 15	580 OPPORTUNITY WAY /LAGRANGE, OH	11 Dispatched & cancelled en route
07-0000215-000	07/19/2007	VSE	601 SOUTH MAIN ST /A/L/SD	731 Sprinkler activation due to malfunction
07-0000216-000	07/20/2007	VNW	131 WEST ST	424A CO Call-Battery Problem
07-0000217-000	07/21/2007	VSW	123 KENT ST	700 False alarm or false call, Other
07-0000218-000	07/22/2007	VNW	194 WEST HERRICK AVE /A/L/SC	311 Medical assist, assist EMS crew
07-0000219-000	07/22/2007	WAKE	4353 STATE RTE 60 /WAKEMAN, OH	342 Search for person in water
07-0000220-000	07/23/2007	WAKE	4353 STATE RTE 60 /WAKEMAN, OH	361 Swimming/recreational water areas rescue
07-0000221-000	07/24/2007	VSE	508 DICKSON ST /ATKINS	531 Smoke or odor removal
07-0000222-000	07/25/2007	VNW	113 MIDDLE ST	424A CO Call-Battery Problem
07-0000223-000	07/27/2007	PENW	19404 STATE RTE 301	322 Motor vehicle accident with injuries
07-0000224-000	07/27/2007	PESW	42161 STATE RTE 18 /A	740 Unintentional transmission of alarm, Other
07-0000225-000	07/27/2007	VSE	508 DICKSON ST	611 Dispatched & cancelled en route
07-0000226-000	07/27/2007	LAG 15	19380 WHITEHEAD /LAGRANGE, OH	611 Dispatched & cancelled en route
07-0000227-000	07/27/2007	PINE	14911 STATE RTE 20 /OBERLIN, OH	322 Motor vehicle accident with injuries
07-0000228-000	07/29/2007	VSE	214 EAST HERRICK AVE /PO BOX	113 Cooking fire, confined to container
07-0000229-000	07/30/2007	BNW	51327 PECK WADSWORTH RD	311 Medical assist, assist EMS crew
07-0000230-000	07/31/2007	BNE	19800 QUARRY RD	131 Passenger vehicle fire
07-0000231-000	08/03/2007	BNE	21941 STATE RTE 511	561 Unauthorized burning
07-0000232-000	08/03/2007	VSW	23467 STATE RTE 58	322 Motor vehicle accident with injuries
07-0000233-000	08/03/2007	WNW	46224 PECK WADSWORTH RD	311 Medical assist, assist EMS crew
07-0000234-000	08/03/2007	VSW	201 WEST HERRICK AVE /L	322 Motor vehicle accident with injuries
07-0000235-000	08/05/2007	HNE	25381 STATE RTE 58	412 Gas leak (natural gas or LPG)
07-0000236-000	08/07/2007	PESE	22225 STATE RTE 301	743 Smoke detector activation, no fire - unintentional
07-0000237-000	08/08/2007	VSW	120 SOUTH MAIN ST /A	744 Detector activation, no fire - unintentional
07-0000238-000	08/08/2007	VNE	230 EAST HAMILTON ST	412 Gas leak (natural gas or LPG)
07-0000239-000	08/09/2007	HUNTWP 10	26500 HAWLEY RD	600 Good intent call, Other
07-0000240-000	08/09/2007	VSW	136 SOUTH MAIN ST /A/H/L/SC	700 False alarm or false call, Other
07-0000241-000	08/09/2007	VNW	224 NORTH MILL ST /APT 12	412 Gas leak (natural gas or LPG)
07-0000242-000	08/10/2007	VSW	117 FOURTH ST	424A CO Call-Battery Problem
07-0000243-000	08/10/2007	HNE	44700 STATE RTE 162	631 Authorized controlled burning
07-0000244-000	08/11/2007	WSW	48081 PECK WADSWORTH RD	341 Search for person on land
07-0000245-000	08/13/2007	PISW	46350 MERRIAM RD	311 Medical assist, assist EMS crew
07-0000246-000	08/13/2007	VNW	225 NORTH MAIN ST	111 Building fire

WELLINGTON FIRE DISTRICT
Monthly Incident Report
Alarm Date Between {01/01/2007} And {12/31/2007}

Incident-Exp#	Alm Date	Twp/Village	Location	Incident Type
07-0000247-000	08/13/2007	VSE	214 EAST HERRICK AVE /PO BOX	730 System malfunction, Other
07-0000248-000	08/14/2007	VNE	350 MAPLE ST /A/L/SW	740 Unintentional transmission of alarm, Other
07-0000249-000	08/15/2007	VSW	120 ERIE ST	311 Medical assist, assist EMS crew
07-0000250-000	08/18/2007	PESW	42550 SMITH RD	311 Medical assist, assist EMS crew
07-0000251-000	08/20/2007	VSE	214 EAST HERRICK AVE /PO BOX	740 Unintentional transmission of alarm, Other
07-0000252-000	08/20/2007	VSW	139 WEST HERRICK AVE /A	733 Smoke detector activation due to malfunction
07-0000253-000	08/20/2007	PENE	21300 INDIAN HOLLOW RD	611 Dispatched & cancelled en route
07-0000254-000	08/21/2007	WSW	23000 FAIRGROUNDS RD	322 Motor vehicle accident with injuries
07-0000255-000	08/21/2007	VNE	720 SHILOH AVE /A/L/SW	154 Dumpster or other outside trash receptacle fire
07-0000256-000	08/22/2007	WSE	22560 HAWLEY RD	322 Motor vehicle accident with injuries
07-0000257-000	08/22/2007	WSE	44605 STATE RTE 18	322 Motor vehicle accident with injuries
07-0000258-000	08/22/2007	PENW	19798 WEST RD	322 Motor vehicle accident with injuries
07-0000259-000	08/24/2007	WSW	23000 FAIRGROUNDS RD	311 Medical assist, assist EMS crew
07-0000260-000	08/26/2007	PINW	STATE RTE 303 & QUARRY RD	322 Motor vehicle accident with injuries
07-0000261-000	08/27/2007	VNW	113 AB CT	671 HazMat release investigation w/no HazMat
07-0000262-000	08/27/2007	BNE	49950 STATE RTE 18	561 Unauthorized burning
07-0000263-000	08/27/2007	PISE	WEBSTER RD & WEST RD	444 Power line down
07-0000264-000	08/28/2007	WSW	VICINITY OF PITTS AND SR 18	671 HazMat release investigation w/no HazMat
07-0000265-000	08/29/2007	PINE	16665 STATE RTE 58	322 Motor vehicle accident with injuries
07-0000266-000	08/29/2007	VSW	136 SOUTH MAIN ST /A/H/L/SC	311B Medical assist, transport in squad
07-0000267-000	08/30/2007	BSE	STATE RTE 511 & JONES RD	322 Motor vehicle accident with injuries
07-0000268-000	09/02/2007	VNW	ELM STREET	600 Good intent call, Other
07-0000269-000	09/04/2007	WSE	44847 STATE RTE 18	132 Road freight or transport vehicle fire
07-0000270-000	09/06/2007	VSW	210 SOUTH MAIN ST	311C Medical assist, lift assist
07-0000271-000	09/08/2007	LAG 15	580 OPPORTUNITY WAY /LAGRANGE	611 Dispatched & cancelled en route
07-0000272-000	09/09/2007	WSW	QUARRY RD & WHEELING&LAKE ERIE	322B Vehicle accident/Life Flight
07-0000273-000	09/09/2007	PISW	17156 QUARRY RD	733 Smoke detector activation due to malfunction
07-0000274-000	09/09/2007	VSW	535 JONES RD /A/L	740 Unintentional transmission of alarm, Other
07-0000275-000	09/10/2007	WNW	19720 STATE RTE 58 /LOT #8	412 Gas leak (natural gas or LPG)
07-0000276-000	09/10/2007	VNE	223 EAST HAMILTON ST	311C Medical assist, lift assist
07-0000277-000	09/14/2007	HSW	NEW LONDON EASTERN RD & BAKER	322 Motor vehicle accident with injuries
07-0000278-000	09/15/2007	VSE	601 SOUTH MAIN ST /A/L/SD	700 False alarm or false call, Other
07-0000279-000	09/15/2007	VNE	149 DEWOLF ST	631 Authorized controlled burning
07-0000280-000	09/16/2007	WNW	19566 STATE RTE 58	322 Motor vehicle accident with injuries
07-0000281-000	09/16/2007	HSW	VACANT PROPERTY SOUTH OF 282	322 Motor vehicle accident with injuries
07-0000282-000	09/18/2007	VSE	405 COURTLAND ST	671 HazMat release investigation w/no HazMat
07-0000283-000	09/18/2007	WSW	STATE RTE 18 & QUARRY RD	322 Motor vehicle accident with injuries
07-0000284-000	09/19/2007	WNE	19981 STATE RTE 58	322 Motor vehicle accident with injuries
07-0000285-000	09/19/2007	VSE	413 MAGYAR ST /P.O. BOX 86/A/SW	740 Unintentional transmission of alarm, Other
07-0000286-000	09/22/2007	WNE	43565 WEBSTER RD	322 Motor vehicle accident with injuries
07-0000287-000	09/23/2007	PENW	20594 STATE RTE 301	322 Motor vehicle accident with injuries

WELLINGTON FIRE DISTRICT
Monthly Incident Report
Alarm Date Between {01/01/2007} And {12/31/2007}

Incident-Exp#	Alm Date	Twp/Village	Location	Incident Type
07-0000288-000	09/24/2007	VSW	136 SOUTH MAIN ST /A/H/L/SC	311 Medical assist, assist EMS crew
07-0000289-000	09/25/2007	WSE	WEST RD & SMITH RD	322 Motor vehicle accident with injuries
07-0000290-000	09/25/2007	WNW	20410 STATE RTE 58	311 Medical assist, assist EMS crew
07-0000291-000	09/26/2007	PINE	15181 STATE RTE 58 /A/H/L/S/OBERLIN, OH	Bomb scare - no bomb
07-0000292-000	09/27/2007	VSE	278 GREENVIEW CT	733 Smoke detector activation due to malfunction
07-0000293-000	09/29/2007	VSE	601 SOUTH MAIN ST /A/L/SD	740 Unintentional transmission of alarm, Other
07-0000294-000	10/01/2007	WSE	23400 WEST RD	111 Building fire
07-0000295-000	10/01/2007	PINE	45189 STATE RTE 20 /OBERLIN, OH	322 Motor vehicle accident with injuries
07-0000296-000	10/04/2007	PESW	23834 STATE RTE 301	631 Authorized controlled burning
07-0000297-000	10/07/2007	BNW	STATE RTE 18 & STATE RTE 511	322B Vehicle accident/Life Flight
07-0000298-000	10/09/2007	PINE	44881 STATE RTE 20 /OBERLIN, OH	622 No Incident found on arrival at dispatch address
07-0000299-000	10/09/2007	BSW	22289 STATE RTE 511	322 Motor vehicle accident with injuries
07-0000300-000	10/09/2007	VNW	122.5 DEPOT ST	311C Medical assist, lift assist
07-0000301-000	10/09/2007	WSE	45227 STATE RTE 18	311 Medical assist, assist EMS crew
07-0000302-000	10/11/2007	VSE	601 SOUTH MAIN ST /A/L/SD	730 System malfunction, Other
07-0000303-000	10/11/2007	VSW	508 SOUTH MAIN ST /L	411 Gasoline or other flammable liquid spill
07-0000304-000	10/11/2007	VSE	601 SOUTH MAIN ST /A/L/SD	730 System malfunction, Other
07-0000305-000	10/12/2007	LAG 15	18513 STATE RTE 301 /LAGRANGE, OH	611 Dispatched & cancelled en route
07-0000306-000	10/12/2007	VSE	601 SOUTH MAIN ST /A/L/SD	730 System malfunction, Other
07-0000307-000	10/12/2007	VSE	601 SOUTH MAIN ST /A/L/SD	730 System malfunction, Other
07-0000308-000	10/14/2007	VSE	601 SOUTH MAIN ST /A/L/SD	730 System malfunction, Other
07-0000309-000	10/14/2007	VSE	214 EAST HERRICK AVE /PO BOX	412 Gas leak (natural gas or LPG)
07-0000310-000	10/15/2007	VSE	601 SOUTH MAIN ST /A/L/SD	730 System malfunction, Other
07-0000311-000	10/16/2007	WNW	19948 STATE RTE 58	531 Smoke or odor removal
07-0000312-000	10/19/2007	PESW	22602 STATE RTE 301	631 Authorized controlled burning
07-0000313-000	10/20/2007	BNW	51899 PECK WADSWORTH RD	311 Medical assist, assist EMS crew
07-0000314-000	10/21/2007	BSW	24096 GORE ORPHANAGE RD	322 Motor vehicle accident with injuries
07-0000315-000	10/21/2007	PISW	QUARRY RD & MERRIAM RD	143 Grass fire
07-0000316-000	10/23/2007	HNE	25381 STATE RTE 58	500 Service Call, other
07-0000317-000	10/24/2007	WSW	47599 STATE RTE 18	631 Authorized controlled burning
07-0000318-000	10/24/2007	PESW	23834 STATE RTE 301	322 Motor vehicle accident with injuries
07-0000319-000	10/24/2007	VNW	KELLY ST & NORTH MAIN ST	131 Passenger vehicle fire
07-0000320-000	10/25/2007	SULV 17	132 TOWNSHIP ROAD 391 /SULLIVAN, OH	111 Building fire
07-0000321-000	10/25/2007	VNW	WEST HERRICK AVE & MIDDLE ST	412 Gas leak (natural gas or LPG)
07-0000322-000	10/25/2007	VNW	WEST HERRICK AVE & MIDDLE ST	412 Gas leak (natural gas or LPG)
07-0000323-000	10/26/2007	VSW	281 FINDLEY AVE	140 Natural vegetation fire, Other
07-0000324-000	10/28/2007	VSW	118 DEPOT ST	531 Smoke or odor removal
07-0000325-000	10/29/2007	ROC 13	52612 NEW LONDON EASTERN RD	611 Dispatched & cancelled en route
07-0000326-000	10/29/2007	ROC 13	52612 NEW LONDON EASTERN RD	611 Dispatched & cancelled en route
07-0000327-000	10/29/2007	VNW	WEST HERRICK AVE & MIDDLE ST	412 Gas leak (natural gas or LPG)
07-0000328-000	10/31/2007	HNE	STATE RTE 58 & STATE RTE 162	131 Passenger vehicle fire

WELLINGTON FIRE DISTRICT
Monthly Incident Report
Alarm Date Between {01/01/2007} And {12/31/2007}

Incident-Exp#	Alm Date	Twp/Village	Location	Incident Type
07-000329-000	11/01/2007	PINW	15925 QUARRY RD /OBERLIN, OH 44074	744 Smoke detector activation, no fire - unintentional
07-000330-000	11/01/2007	HNE	44555 STATE RTE 162	323 Motor vehicle/pedestrian accident (MV Ped)
07-000331-000	11/05/2007	VNW	113 AB CT	671 HazMat release investigation w/no HazMat
07-000332-000	11/06/2007	LAG 15	580 OPPORTUNITY WAY /LAGRANGE, OH	511 Dispatched & cancelled en route
07-000333-000	11/06/2007	WSE	22600 HAWLEY RD	671 HazMat release investigation w/no HazMat
07-000334-000	11/07/2007	PENW	20681 WEST RD	322 Motor vehicle accident with injuries
07-000335-000	11/08/2007	PINE	45970 STATE RTE 20 /OBERLIN, OH	322 Motor vehicle accident with injuries
07-000336-000	11/08/2007	VNW	634 WEST HERRICK AVE	561 Unauthorized burning
07-000337-000	11/09/2007	WNE	21750 WEST RD	631 Authorized controlled burning
07-000338-000	11/10/2007	PESW	23003 WEST RD	114 Chimney or flue fire, confined to chimney or flue
07-000339-000	11/10/2007	VSW	139 WEST HERRICK AVE /A	715 Local alarm system, malicious false alarm
07-000340-000	11/11/2007	VNW	228 JONES ST	311C Medical assist, lift assist
07-000341-000	11/11/2007	BSW	52425 STATE RTE 18	671 HazMat release investigation w/no HazMat
07-000342-000	11/12/2007	PENE	STATE RTE 18 & STATE RTE 301	671 HazMat release investigation w/no HazMat
07-000343-000	11/12/2007	VNE	133 DEWOLF ST	111 Building fire
07-000343-001	11/12/2007	VNE	132 DEWOLF ST	111 Building fire
07-000343-002	11/12/2007	VNE	141 DEWOLF ST	111 Building fire
07-000343-003	11/12/2007	VNE	141 DEWOLF ST	111 Building fire
07-000343-004	11/12/2007	VNE	133 DEWOLF ST	111 Building fire
07-000343-005	11/12/2007	VNE	133 DEWOLF ST	111 Building fire
07-000343-006	11/12/2007	VNE	133 DEWOLF ST	111 Building fire
07-000344-000	11/12/2007	VSE	214 EAST HERRICK AVE /PO BOX	700 False alarm or false call, Other
07-000345-000	11/13/2007	PENW	400' EAST PF 41530 SR 18	322 Motor vehicle accident with injuries
07-000346-000	11/15/2007	VNE	133 DEWOLF ST	160 Special outside fire, Other
07-000347-000	11/15/2007	PENE	19555 INDIAN HOLLOW RD	322B Vehicle accident/Life Flight
07-000348-000	11/16/2007	VNE	133 DEWOLF ST	160 Special outside fire, Other
07-000349-000	11/19/2007	LAG 15	179 RAILROAD ST /LAGRANGE, OH	111 Building fire
07-000350-000	11/20/2007	VSW	136 SOUTH MAIN ST /A/H/L/SC	311 Medical assist, assist EMS crew
07-000351-000	11/20/2007	HSW	NEW LONDON EASTERN RD	322B Vehicle accident/Life Flight
07-000352-000	11/23/2007	HSW	STEWART RD & CLARK RD	322 Motor vehicle accident with injuries
07-000353-000	11/23/2007	VSE	308 EAST HERRICK AVE	311C Medical assist, lift assist
07-000355-000	11/24/2007	PINW	47980 STATE RTE 20 /OBERLIN, OH	322 Motor vehicle accident with injuries
07-000354-000	11/25/2007	HNE	SMITH RD & WEST RD	322 Motor vehicle accident with injuries
07-000356-000	11/25/2007	VSW	204 SOUTH MAIN ST	131 Passenger vehicle fire
07-000357-000	11/29/2007	PESW	39534 STATE RTE 18	322 Motor vehicle accident with injuries
07-000358-000	11/30/2007	VSW	102 WEST HERRICK AVE /A	743 Smoke detector activation, no fire - unintentional
07-000359-000	12/01/2007	VSW	217 PROSPECT ST	412 Gas leak (natural gas or LPG)
07-000360-000	12/01/2007	PINW	46789 STATE RTE 20 /A/OBERLIN, OH	745 Alarm system activation, no fire - unintentional
07-000361-000	12/02/2007	VSE	214 EAST HERRICK AVE /PO BOX	745 Alarm system activation, no fire - unintentional
07-000362-000	12/03/2007	VSW	119 SOUTH MILL ST	671 HazMat release investigation w/no HazMat
07-000363-000	12/04/2007	WNW	19942 PITTS RD	424A CO Call-Battery Problem

WELLINGTON FIRE DISTRICT
Monthly Incident Report
Alarm Date Between {01/01/2007} And {12/31/2007}

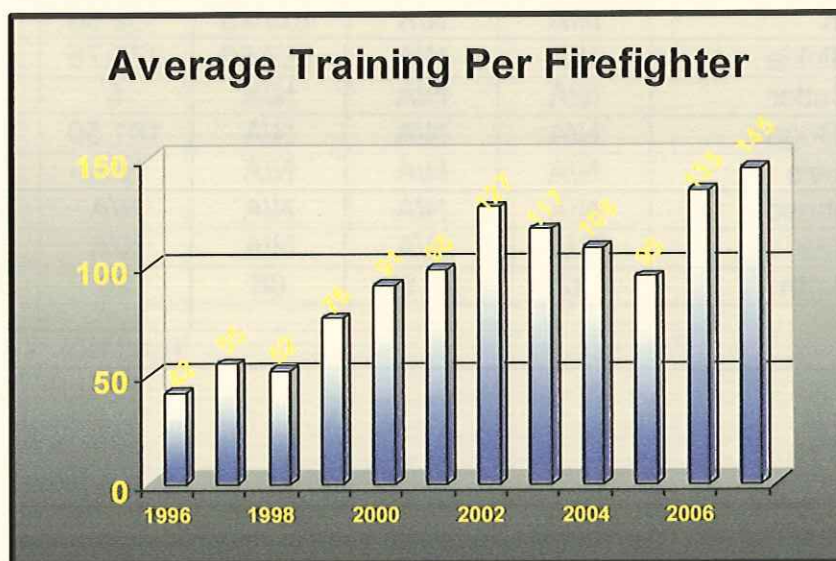
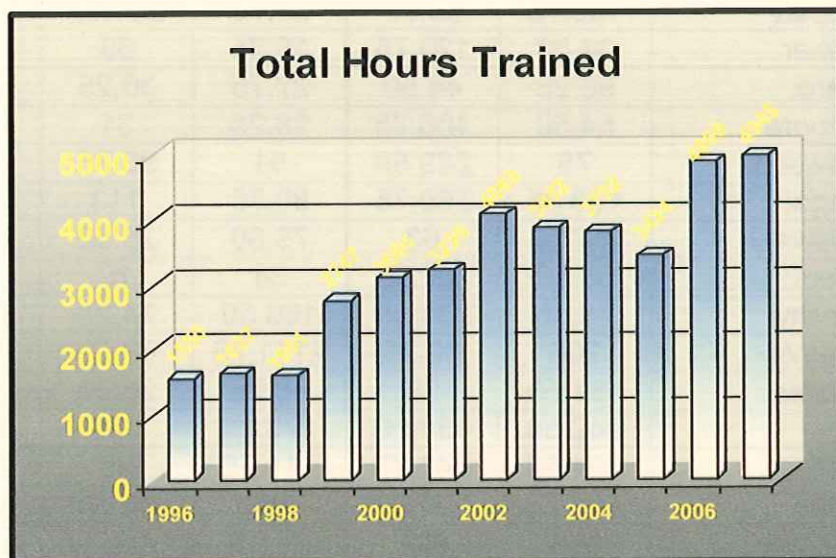
Incident-Exp#	Alm Date	Twp/Village	Location	Incident Type
07-0000364-000	12/04/2007	CAM 16	17742 GORE ORPHANAGE RD	611 Dispatched & cancelled en route
07-0000365-000	12/05/2007	PISE	43581 STATE RTE 303	322 Motor vehicle accident with injuries
07-0000366-000	12/08/2007	CAM 16	51817 BETTS RD /OBERLIN, OH 44074	411 Medical assist, assist EMS crew
07-0000367-000	12/08/2007	PINE	45624 STATE RTE 20 /OBERLIN, OH	322 Motor vehicle accident with injuries
07-0000368-000	12/09/2007	VSW	238 SOUTH MAIN ST	531 Smoke or odor removal
07-0000369-000	12/16/2007	PESW	AG FIELD, EAST OF 43191 JONES ROAD	Search for person on land
07-0000370-000	12/19/2007	PINW	15910 STATE RTE 58 /OBERLIN, OH	322 Motor vehicle accident with injuries
07-0000371-000	12/19/2007	WSE	44201 STATE RTE 18	114 Chimney or flue fire, confined to chimney or flue
07-0000372-000	12/20/2007	HNE	150' SOUTH OF 25381 SR 58	322B Vehicle accident/Life Flight
07-0000373-000	12/21/2007	PENW	43125 WEBSTER RD	322 Motor vehicle accident with injuries
07-0000374-000	12/23/2007	WSE	44840 CEMETERY RD	445 Arcing, shorted electrical equipment
07-0000375-000	12/23/2007	HSE	45375 STATE RTE 162	322 Motor vehicle accident with injuries
07-0000376-000	12/26/2007	WNE	STATE RTE 58 & WEBSTER RD	322 Motor vehicle accident with injuries
07-0000377-000	12/27/2007	VSE	110 CARPENTER ST	424 Carbon monoxide incident
07-0000378-000	12/30/2007	BNE	50085 PECK WADSWORTH RD	111 Building fire
07-0000379-000	12/31/2007	VNW	224 NORTH MILL ST /APT #23	412 Gas leak (natural gas or LPG)

Total Incident Count 385

Section IV: Training and Activities

Wellington Fire District Training and Activity Summary

	2002	2003	2004	2005	2006	2007
FF's Trained:	32	33	37	36	36	34
Avg. Training Per FF:	127	117	108	95	135	145
FF's With >40 Hours:	27	28	28	23	25	30
FF's With >80 Hours:	21	20	21	17	20	22
FF's With >100 Hours:	16	15	17	15	20	19
FF's With >120 Hours:	14	14	10	11	17	19
FF's With >200 Hours:	9	6	6	4	11	9
FF's With >300 Hours:	0	0	2	1	2	2
Total Training Hours:	4,069	3,852	3,792	3,424	4,860	4,945



**Wellington Fire District
2007 Training Analysis by Staff**

Staff Member	2002	2003	2004	2005	2006	2007
Chief Robert Walker	276.25	170	168.25	240	250	185.50
Asst. Chief Mike Wetherbee	23.25	89.50	177.25	305.50	319	419
Captain Jim Clark	146.75	276.50	119	185.25	241.75	150.25
Lieutenant Bill Brown	166.75	150	219.25	128.50	204	235.25
Lieutenant Troy Pitts	246.50	143.75	317.75	197	238.50	230
Lieutenant Brian Slack	217	55	316	115.75	317	326
Firefighter Gordy Lent	94.75	95	112.25	64.25	112.50	85.75
Firefighter George Gardner	94.25	58.50	28.25	11.25	45.50	59.75
Firefighter Scott Regal	85.75	69	69.25	156.50	125.50	163
Firefighter Dave Crawford	100	84.75	104.75	103.50	77.25	80.75
Firefighter Frank Marley	105.75	69.75	33.75	221.75	255.75	305
Firefighter Dave Fisher	34.50	126.75	16.75	63	102.25	24.50
Firefighter Greg Frenk	96.25	44.50	27.75	36.25	25.50	78.75
Firefighter Casey Moore	54.50	106.75	28.25	31	37	34.25
Firefighter John Clawson	75	229.50	51	93.75	194	47.25
Firefighter Chad Regal	123.25	260.75	80.75	113	164.50	208
Firefighter Derick Oswald	252.50	63	73.50	26.50	36.50	75.50
Firefighter Bill Watters	58.50	98.50	34	10	20	32.25
Firefighter Dan Shinsky	75.50	231.50	166.50	74.25	207	299.50
Firefighter Bryan Hamer	266	88.25	2111.75	63.50	197.50	178
Firefighter Chris Brasee	181.50	36	98.75	26.50	37.50	42.50
Firefighter Bill Wolf	242.50	131.50	173.25	129	200	142.25
Firefighter Tim Polen	234.50	141.25	111.75	95	143.50	164.75
Firefighter Ethan Little	216.75	174	150	75.50	157.50	173.75
Firefighter Steve Higgins	N/A	N/A	18.75	46.50	23	49.25
Firefighter Dan Twining	N/A	N/A	118.50	140.25	31	24.75
Firefighter Ed Thorn	N/A	N/A	105.25	182.50	244.25	234.75
Firefighter Thadd Hinkle	N/A	N/A	127.50	275.75	245.25	150.25
Firefighter Randy Butler	N/A	N/A	N/A	5	114	136.50
Firefighter Jeremy Boggs	N/A	N/A	N/A	101.50	205.50	167.50
Firefighter Darin Lewis	N/A	N/A	N/A	N/A	178.50	239.25
Firefighter Craig Johnson	N/A	N/A	N/A	N/A	5	49.50
Dispatcher Bill Varner	N/A	N/A	N/A	N/A	59	60.75
Diver Kraig Farnsworth	32	23.50	66	20	27.50	90.75
Total Hours Trained:						4944.75

WELLINGTON FIRE DISTRICT

Training Analysis by Staff (Modified)

Class Date Between {01/01/2007} And {12/31/2007}

Category	# Attended	Pct of Attended	Hours	Pct of Hours
JDB-4444 BOGGS, JEREMY D				
AD04 Station Maintenance	3	4.68%	2.50	1.49 %
AP10 Apparatus Check Procedures	7	10.93%	9.50	5.67 %
APPUMP Apparatus Pump Training	1	1.56%	1.00	0.59 %
DT01 General Driver Training	2	3.12%	4.00	2.38 %
EL01 Electrical Safety	1	1.56%	1.00	0.59 %
EM01 Emergency Medical Services	1	1.56%	2.00	1.19 %
EM02 Orientation Of The EMT/Responder	1	1.56%	0.50	0.29 %
EM12 Hypothermia	1	1.56%	1.00	0.59 %
EM13 Specialized Equipment	2	3.12%	2.00	1.19 %
EM15 Burns	1	1.56%	1.00	0.59 %
EM16 Hyperthermia	1	1.56%	1.00	0.59 %
FC40 Strategic and Tactical Operations	9	14.06%	13.50	8.05 %
FFII Firefighter II Skills	25	39.06%	116.00	69.25 %
FI72 Sprinkler Systems	1	1.56%	1.25	0.74 %
FP02 Specialized Equipment	1	1.56%	0.25	0.14 %
FV30 Extrication	1	1.56%	0.50	0.29 %
FW03 SCBA Training	1	1.56%	2.50	1.49 %
FW05 Ladder Training	1	1.56%	2.00	1.19 %
FW11 Aerial Operations	1	1.56%	3.00	1.79 %
FW19 Thermal Imaging	1	1.56%	1.00	0.59 %
PREPLAN Company Inspection-Pre Plan	1	1.56%	0.50	0.29 %
SPEC Special Duty	1	1.56%	1.50	0.89 %
Totals for Staff:	64		167.50	

CB-5611 BRASEE, CHRISTOPHER

AD04 Station Maintenance	1	3.44%	1.00	2.35 %
AP10 Apparatus Check Procedures	1	3.44%	1.00	2.35 %
EL01 Electrical Safety	1	3.44%	1.00	2.35 %
EM01 Emergency Medical Services	1	3.44%	2.00	4.70 %
EM02 Orientation Of The EMT/Responder	1	3.44%	0.50	1.17 %
EM06 Respiratory System	1	3.44%	0.75	1.76 %
EM12 Hypothermia	1	3.44%	1.00	2.35 %
EM13 Specialized Equipment	2	6.89%	2.00	4.70 %
EM15 Burns	1	3.44%	1.00	2.35 %
FC40 Strategic and Tactical Operations	4	13.79%	5.00	11.76 %
FI72 Sprinkler Systems	1	3.44%	1.25	2.94 %
FP02 Specialized Equipment	1	3.44%	0.25	0.58 %
FS01 Fire Streams Theory	1	3.44%	1.00	2.35 %
FV20 Vehicle Extrication	2	6.89%	5.00	11.76 %
FV30 Extrication	1	3.44%	0.50	1.17 %
FW01 Boat Operations	1	3.44%	3.00	7.05 %
FW02 Dive Training	4	13.79%	10.25	24.11 %

WELLINGTON FIRE DISTRICT

Training Analysis by Staff (Modified)

Class Date Between {01/01/2007} And {12/31/2007}

Category	# Attended	Pct of Attended	Hours	Pct of Hours
CB-5611 BRASEE, CHRISTOPHER				
FW03 SCBA Training	1	3.44%	2.50	5.88 %
FW05 Ladder Training	1	3.44%	2.00	4.70 %
FW19 Thermal Imaging	1	3.44%	1.00	2.35 %
PREPLAN Company Inspection-Pre Plan	1	3.44%	0.50	1.17 %
Totals for Staff:		29	42.50	
WHB-3479 BROWN, WILLIAM H				
AD02 Fire Department Organization	5	7.57%	13.50	5.73 %
AD03 Public Education	15	22.72%	29.50	12.53 %
AP10 Apparatus Check Procedures	2	3.03%	2.50	1.06 %
APPUMP Apparatus Pump Training	1	1.51%	0.50	0.21 %
DT01 General Driver Training	2	3.03%	2.00	0.85 %
EL01 Electrical Safety	1	1.51%	1.00	0.42 %
EM01 Emergency Medical Services	1	1.51%	2.00	0.85 %
EM02 Orientation Of The EMT/Responder	1	1.51%	0.50	0.21 %
EM06 Respiratory System	1	1.51%	0.75	0.31 %
EM12 Hypothermia	1	1.51%	1.00	0.42 %
EM13 Specialized Equipment	1	1.51%	1.00	0.42 %
EM15 Burns	1	1.51%	1.00	0.42 %
FA32 Fireworks Handling	1	1.51%	5.00	2.12 %
FC40 Strategic and Tactical Operations	3	4.54%	4.50	1.91 %
FI72 Sprinkler Systems	1	1.51%	1.25	0.53 %
FP02 Specialized Equipment	3	4.54%	8.25	3.50 %
FS01 Fire Streams Theory	1	1.51%	1.00	0.42 %
FV01 Basic Fire Investigation	1	1.51%	6.50	2.76 %
FV02 Fire Safety Inspector Training	1	1.51%	7.50	3.18 %
FV20 Vehicle Extrication	2	3.03%	5.00	2.12 %
FV30 Extrication	1	1.51%	0.50	0.21 %
FW02 Dive Training	1	1.51%	2.00	0.85 %
FW03 SCBA Training	1	1.51%	2.50	1.06 %
FW05 Ladder Training	1	1.51%	2.00	0.85 %
FW18 Safety Officer	2	3.03%	5.50	2.33 %
FW19 Thermal Imaging	1	1.51%	1.00	0.42 %
OFD Officer Leadership Development	3	4.54%	82.00	34.85 %
OFF O1 Officers Mtg/Training	7	10.60%	18.00	7.65 %
PREPLAN Company Inspection-Pre Plan	1	1.51%	0.50	0.21 %
SPEC Special Duty	2	3.03%	3.00	1.27 %
SW1 Swiftwater Rescue 1	1	1.51%	24.00	10.20 %
Totals for Staff:		66	235.25	

WELLINGTON FIRE DISTRICT

Training Analysis by Staff (Modified)

Class Date Between {01/01/2007} And {12/31/2007}

Category	# Attended	Pct of Attended	Hours	Pct of Hours
RLB-9686 BUTLER, RANDY				
AP10 Apparatus Check Procedures	2	4.76%	2.00	1.46 %
EL01 Electrical Safety	1	2.38%	1.00	0.73 %
EM01 Emergency Medical Services	1	2.38%	2.00	1.46 %
EM06 Respiratory System	1	2.38%	0.75	0.54 %
EM13 Specialized Equipment	2	4.76%	2.00	1.46 %
EM20 CPR Recertification	1	2.38%	2.00	1.46 %
FC40 Strategic and Tactical Operations	4	9.52%	5.50	4.02 %
FFII Firefighter II Skills	25	59.52%	112.00	82.05 %
FI72 Sprinkler Systems	1	2.38%	1.25	0.91 %
FW01 Boat Operations	1	2.38%	3.00	2.19 %
FW02 Dive Training	1	2.38%	2.00	1.46 %
FW05 Ladder Training	1	2.38%	2.00	1.46 %
FW19 Thermal Imaging	1	2.38%	1.00	0.73 %
Totals for Staff:	42		136.50	

JEC-6142 CLARK, JAMES E

AD02 Fire Department Organization	2	2.22%	3.50	2.32 %
AD03 Public Education	2	2.22%	6.50	4.32 %
AD04 Station Maintenance	9	10.00%	13.00	8.65 %
AP02 Hose Testing	1	1.11%	2.00	1.33 %
AP10 Apparatus Check Procedures	20	22.22%	34.00	22.62 %
APPUMP Apparatus Pump Training	3	3.33%	2.50	1.66 %
DT01 General Driver Training	5	5.55%	5.00	3.32 %
EL01 Electrical Safety	1	1.11%	1.00	0.66 %
EM01 Emergency Medical Services	1	1.11%	2.00	1.33 %
EM02 Orientation Of The EMT/Responder	1	1.11%	0.50	0.33 %
EM06 Respiratory System	1	1.11%	0.75	0.49 %
EM12 Hypothermia	1	1.11%	1.00	0.66 %
EM13 Specialized Equipment	2	2.22%	2.00	1.33 %
EM15 Burns	1	1.11%	1.00	0.66 %
EM16 Hyperthermia	1	1.11%	1.00	0.66 %
EMT-B EMT Basic Training	1	1.11%	11.00	7.32 %
FC40 Strategic and Tactical Operations	8	8.88%	10.50	6.98 %
FI72 Sprinkler Systems	1	1.11%	1.25	0.83 %
FP02 Specialized Equipment	1	1.11%	0.25	0.16 %
FS01 Fire Streams Theory	1	1.11%	1.00	0.66 %
FV20 Vehicle Extrication	1	1.11%	2.00	1.33 %
FV30 Extrication	1	1.11%	0.50	0.33 %
FW01 Boat Operations	1	1.11%	3.00	1.99 %
FW02 Dive Training	1	1.11%	2.00	1.33 %
FW03 SCBA Training	1	1.11%	2.50	1.66 %
FW05 Ladder Training	1	1.11%	1.00	0.66 %

WELLINGTON FIRE DISTRICT

Training Analysis by Staff (Modified)

Class Date Between {01/01/2007} And {12/31/2007}

Category	# Attended	Pct of Attended	Hours	Pct of Hours
JEC-6142 CLARK, JAMES E				
FW12 Hydrant Training	1	1.11%	1.00	0.66 %
FW14 Truck Maintenance	7	7.77%	9.50	6.32 %
FW18 Safety Officer	1	1.11%	4.00	2.66 %
FW19 Thermal Imaging	1	1.11%	1.00	0.66 %
OFF O1 Officers Mtg/Training	8	8.88%	20.00	13.31 %
PREPLAN Company Inspection-Pre Plan	2	2.22%	2.50	1.66 %
SPEC Special Duty	1	1.11%	1.50	0.99 %
Totals for Staff:	90		150.25	

JRC-8915 CLAWSON, JOHN R

AD04 Station Maintenance	5	13.88%	6.50	13.75 %
AP02 Hose Testing	1	2.77%	2.00	4.23 %
AP10 Apparatus Check Procedures	5	13.88%	7.50	15.87 %
DT01 General Driver Training	1	2.77%	1.50	3.17 %
EL01 Electrical Safety	1	2.77%	1.00	2.11 %
EM02 Orientation Of The EMT/Responder	1	2.77%	0.50	1.05 %
EM06 Respiratory System	1	2.77%	0.75	1.58 %
EM12 Hypothermia	1	2.77%	1.00	2.11 %
EM13 Specialized Equipment	1	2.77%	1.00	2.11 %
EM16 Hyperthermia	1	2.77%	1.00	2.11 %
FC40 Strategic and Tactical Operations	4	11.11%	5.00	10.58 %
FI72 Sprinkler Systems	1	2.77%	1.25	2.64 %
FP02 Specialized Equipment	1	2.77%	0.25	0.52 %
FS01 Fire Streams Theory	1	2.77%	1.00	2.11 %
FV30 Extrication	1	2.77%	0.50	1.05 %
FW01 Boat Operations	1	2.77%	3.00	6.34 %
FW02 Dive Training	1	2.77%	2.00	4.23 %
FW03 SCBA Training	1	2.77%	2.50	5.29 %
FW05 Ladder Training	1	2.77%	2.00	4.23 %
FW11 Aerial Operations	1	2.77%	2.00	4.23 %
FW14 Truck Maintenance	2	5.55%	2.50	5.29 %
FW19 Thermal Imaging	1	2.77%	1.00	2.11 %
PREPLAN Company Inspection-Pre Plan	1	2.77%	0.50	1.05 %
SPEC Special Duty	1	2.77%	1.00	2.11 %
Totals for Staff:	36		47.25	

DRG-8028 CRAWFORD, DAVID R

AD02 Fire Department Organization	2	4.00%	3.50	4.33 %
AD04 Station Maintenance	7	14.00%	11.00	13.62 %
AP01 Pumper Overhaul and Repair	1	2.00%	2.00	2.47 %
AP10 Apparatus Check Procedures	15	30.00%	29.50	36.53 %

WELLINGTON FIRE DISTRICT

Training Analysis by Staff (Modified)

Class Date Between {01/01/2007} And {12/31/2007}

Category	# Attended	Pct of Attended	Hours	Pct of Hours
DRC-8028 CRAWFORD, DAVID R				
EL01 Electrical Safety	1	2.00%	1.00	1.23 %
EM01 Emergency Medical Services	1	2.00%	2.00	2.47 %
EM02 Orientation Of The EMT/Responder	1	2.00%	0.50	0.61 %
EM06 Respiratory System	1	2.00%	0.75	0.92 %
EM12 Hypothermia	1	2.00%	1.00	1.23 %
EM13 Specialized Equipment	2	4.00%	2.00	2.47 %
EM15 Burns	1	2.00%	1.00	1.23 %
EM16 Hyperthermia	1	2.00%	1.00	1.23 %
FC40 Strategic and Tactical Operations	4	8.00%	6.50	8.04 %
FI72 Sprinkler Systems	1	2.00%	1.25	1.54 %
FP02 Specialized Equipment	1	2.00%	0.25	0.30 %
FV20 Vehicle Extrication	1	2.00%	2.00	2.47 %
FV30 Extrication	1	2.00%	0.50	0.61 %
FW01 Boat Operations	1	2.00%	3.00	3.71 %
FW03 SCBA Training	1	2.00%	2.50	3.09 %
FW11 Aerial Operations	1	2.00%	2.00	2.47 %
FW14 Truck Maintenance	2	4.00%	4.50	5.57 %
FW17 Ropes & Knots	1	2.00%	1.00	1.23 %
PREPLAN Company Inspection-Pre Plan	2	4.00%	2.00	2.47 %
Totals for Staff:	50		80.75	

KKF-0017 FARNSWORTH, KENNETH K

AD03 Public Education	1	5.88%	2.00	2.20 %
EL01 Electrical Safety	1	5.88%	1.00	1.10 %
FF1A Firefighter 1A Class	6	35.29%	46.50	51.23 %
FW01 Boat Operations	1	5.88%	3.00	3.30 %
FW02 Dive Training	5	29.41%	17.75	19.55 %
HAZMAT 1 Hazmat Awareness	1	5.88%	6.00	6.61 %
HZ02 Hazmat and Operations	2	11.76%	14.50	15.97 %
Totals for Staff:	17		90.75	

DHF-7835 FISHER, DAVID H

AD04 Station Maintenance	1	4.76%	1.00	4.08 %
AP10 Apparatus Check Procedures	1	4.76%	1.00	4.08 %
DT01 General Driver Training	1	4.76%	1.50	6.12 %
EL01 Electrical Safety	1	4.76%	1.00	4.08 %
EM01 Emergency Medical Services	1	4.76%	2.00	8.16 %
EM02 Orientation Of The EMT/Responder	1	4.76%	0.50	2.04 %
EM06 Respiratory System	1	4.76%	0.75	3.06 %
EM12 Hypothermia	1	4.76%	1.00	4.08 %
EM13 Specialized Equipment	1	4.76%	1.00	4.08 %

WELLINGTON FIRE DISTRICT

Training Analysis by Staff (Modified)

Class Date Between {01/01/2007} And {12/31/2007}

Category	# Attended	Pct of Attended	Hours	Pct of Hours
DHF-7835 FISHER, DAVID H				
EM15 Burns	1	4.76%	1.00	4.08 %
FC40 Strategic and Tactical Operations	4	19.04%	5.00	20.40 %
FP02 Specialized Equipment	1	4.76%	0.25	1.02 %
FS01 Fire Streams Theory	1	4.76%	1.00	4.08 %
FV20 Vehicle Extrication	1	4.76%	2.00	8.16 %
FV30 Extrication	1	4.76%	0.50	2.04 %
FW03 SCBA Training	1	4.76%	2.50	10.20 %
FW05 Ladder Training	1	4.76%	2.00	8.16 %
PREPLAN Company Inspection-Pre Plan	1	4.76%	0.50	2.04 %
Totals for Staff:	21		24.50	

GJF-7676 FRENK, GREGORY J

AD03 Public Education	2	5.88%	3.75	4.76 %
AP10 Apparatus Check Procedures	2	5.88%	3.00	3.80 %
DT01 General Driver Training	1	2.94%	1.50	1.90 %
EM01 Emergency Medical Services	1	2.94%	2.00	2.53 %
EM02 Orientation Of The EMT/Responder	1	2.94%	0.50	0.63 %
EM06 Respiratory System	1	2.94%	0.75	0.95 %
EM12 Hypothermia	1	2.94%	1.00	1.26 %
EM13 Specialized Equipment	2	5.88%	2.00	2.53 %
EM16 Hyperthermia	1	2.94%	1.00	1.26 %
FC40 Strategic and Tactical Operations	5	14.70%	7.50	9.52 %
FI72 Sprinkler Systems	1	2.94%	1.25	1.58 %
FP02 Specialized Equipment	1	2.94%	0.25	0.31 %
FS01 Fire Streams Theory	1	2.94%	1.00	1.26 %
FV20 Vehicle Extrication	1	2.94%	3.00	3.80 %
FV30 Extrication	1	2.94%	0.50	0.63 %
FW01 Boat Operations	1	2.94%	3.00	3.80 %
FW02 Dive Training	4	11.76%	10.75	13.65 %
FW03 SCBA Training	1	2.94%	2.50	3.17 %
FW05 Ladder Training	1	2.94%	2.00	2.53 %
FW11 Aerial Operations	1	2.94%	2.00	2.53 %
FW18 Safety Officer	1	2.94%	4.00	5.07 %
FW19 Thermal Imaging	1	2.94%	1.00	1.26 %
PREPLAN Company Inspection-Pre Plan	1	2.94%	0.50	0.63 %
SW1 Swiftwater Rescue 1	1	2.94%	24.00	30.47 %
Totals for Staff:	34		78.75	

GWG-9308 GARDNER JR, GEORGE W

AD04 Station Maintenance	8	19.04%	11.50	19.24 %
AP02 Hose Testing	1	2.38%	4.00	6.69 %

WELLINGTON FIRE DISTRICT

Training Analysis by Staff (Modified)

Class Date Between {01/01/2007} And {12/31/2007}

Category	# Attended	Pct of Attended	Hours	Pct of Hours
GWG-9308 GARDNER JR, GEORGE W				
AP10 Apparatus Check Procedures	9	21.42 %	14.50	24.26 %
APPUMP Apparatus Pump Training	1	2.38 %	1.00	1.67 %
EL01 Electrical Safety	1	2.38 %	1.00	1.67 %
EM01 Emergency Medical Services	2	4.76 %	3.00	5.02 %
EM02 Orientation Of The EMT/Responder	1	2.38 %	0.50	0.83 %
EM06 Respiratory System	1	2.38 %	0.75	1.25 %
EM13 Specialized Equipment	2	4.76 %	1.75	2.92 %
EM15 Burns	1	2.38 %	1.00	1.67 %
EM16 Hyperthermia	1	2.38 %	1.00	1.67 %
FC40 Strategic and Tactical Operations	5	11.90 %	7.50	12.55 %
FI72 Sprinkler Systems	1	2.38 %	1.25	2.09 %
FS01 Fire Streams Theory	1	2.38 %	1.00	1.67 %
FV20 Vehicle Extrication	1	2.38 %	2.00	3.34 %
FV30 Extrication	1	2.38 %	0.50	0.83 %
FW01 Boat Operations	1	2.38 %	3.00	5.02 %
FW02 Dive Training	1	2.38 %	2.00	3.34 %
FW05 Ladder Training	1	2.38 %	1.00	1.67 %
FW19 Thermal Imaging	1	2.38 %	1.00	1.67 %
PREPLAN Company Inspection-Pre Plan	1	2.38 %	0.50	0.83 %
Totals for Staff:	42		59.75	

BMH-1897 HAMER, BRYAN M

AD03 Public Education	1	1.05 %	2.00	1.12 %
AD04 Station Maintenance	7	7.36 %	9.00	5.05 %
AP02 Hose Testing	2	2.10 %	4.00	2.24 %
AP10 Apparatus Check Procedures	34	35.78 %	68.25	38.34 %
APPUMP Apparatus Pump Training	2	2.10 %	2.50	1.40 %
DT01 General Driver Training	2	2.10 %	2.50	1.40 %
EL01 Electrical Safety	1	1.05 %	1.00	0.56 %
EM01 Emergency Medical Services	1	1.05 %	2.00	1.12 %
EM02 Orientation Of The EMT/Responder	1	1.05 %	0.50	0.28 %
EM06 Respiratory System	1	1.05 %	0.75	0.42 %
EM12 Hypothermia	1	1.05 %	1.00	0.56 %
EM13 Specialized Equipment	2	2.10 %	2.00	1.12 %
EM15 Burns	1	1.05 %	1.00	0.56 %
EM16 Hyperthermia	1	1.05 %	1.00	0.56 %
FC40 Strategic and Tactical Operations	8	8.42 %	12.00	6.74 %
FI72 Sprinkler Systems	1	1.05 %	1.25	0.70 %
FP02 Specialized Equipment	2	2.10 %	2.25	1.26 %
FS01 Fire Streams Theory	1	1.05 %	1.00	0.56 %
FV20 Vehicle Extrication	2	2.10 %	5.00	2.80 %
FV30 Extrication	1	1.05 %	0.50	0.28 %

WELLINGTON FIRE DISTRICT

Training Analysis by Staff (Modified)

Class Date Between {01/01/2007} And {12/31/2007}

Category	# Attended	Pct of Attended	Hours	Pct of Hours
BMH-1897 HAMER, BRYAN M				
FW01 Boat Operations	1	1.05%	3.00	1.68 %
FW02 Dive Training	1	1.05%	2.50	1.40 %
FW03 SCBA Training	1	1.05%	2.50	1.40 %
FW04 Search & Rescue	1	1.05%	1.00	0.56 %
FW05 Ladder Training	1	1.05%	2.00	1.12 %
FW07 Rope Rescue	1	1.05%	1.00	0.56 %
FW08 Hose Lays	1	1.05%	1.50	0.84 %
FW11 Aerial Operations	1	1.05%	1.00	0.56 %
FW12 Hydrant Training	1	1.05%	2.00	1.12 %
FW13 Water Shuttle	1	1.05%	2.00	1.12 %
FW14 Truck Maintenance	5	5.26%	7.00	3.93 %
FW17 Ropes & Knots	1	1.05%	1.00	0.56 %
FW19 Thermal Imaging	1	1.05%	1.00	0.56 %
PREPLAN Company Inspection-Pre Plan	5	5.26%	7.00	3.93 %
SW1 Swiftwater Rescue 1	1	1.05%	24.00	13.48 %
Totals for Staff:	95		178.00	

SJH-3278 HIGGINS, STEPHEN

AD04 Station Maintenance	1	4.34%	1.00	2.03 %
AP10 Apparatus Check Procedures	1	4.34%	1.00	2.03 %
DT01 General Driver Training	1	4.34%	1.50	3.04 %
EL01 Electrical Safety	1	4.34%	1.00	2.03 %
EM01 Emergency Medical Services	1	4.34%	2.00	4.06 %
EM02 Orientation Of The EMT/Responder	1	4.34%	0.50	1.01 %
EM06 Respiratory System	1	4.34%	0.75	1.52 %
EM12 Hypothermia	1	4.34%	1.00	2.03 %
EM13 Specialized Equipment	2	8.69%	2.00	4.06 %
EM15 Burns	1	4.34%	1.00	2.03 %
EM16 Hyperthermia	1	4.34%	1.00	2.03 %
FC40 Strategic and Tactical Operations	3	13.04%	4.00	8.12 %
FI72 Sprinkler Systems	1	4.34%	1.25	2.53 %
FP02 Specialized Equipment	1	4.34%	0.25	0.50 %
FV30 Extrication	1	4.34%	0.50	1.01 %
FW01 Boat Operations	1	4.34%	3.00	6.09 %
FW05 Ladder Training	1	4.34%	2.00	4.06 %
FW19 Thermal Imaging	1	4.34%	1.00	2.03 %
PREPLAN Company Inspection-Pre Plan	1	4.34%	0.50	1.01 %
SW1 Swiftwater Rescue 1	1	4.34%	24.00	48.73 %
Totals for Staff:	23		49.25	

WELLINGTON FIRE DISTRICT

Training Analysis by Staff (Modified)

Class Date Between {01/01/2007} And {12/31/2007}

Category	# Attended	Pct of Attended	Hours	Pct of Hours
TAH-6029 HINKLE, THADD				
AD03 Public Education	4	5.12%	7.75	5.15 %
AD04 Station Maintenance	12	15.38%	18.50	12.31 %
AP02 Hose Testing	1	1.28%	2.00	1.33 %
AP10 Apparatus Check Procedures	25	32.05%	44.00	29.28 %
APPUMP Apparatus Pump Training	2	2.56%	3.50	2.32 %
DT01 General Driver Training	2	2.56%	2.00	1.33 %
EL01 Electrical Safety	1	1.28%	1.00	0.66 %
EM01 Emergency Medical Services	1	1.28%	2.00	1.33 %
EM02 Orientation Of The EMT/Responder	1	1.28%	0.50	0.33 %
EM12 Hypothermia	1	1.28%	1.00	0.66 %
EM13 Specialized Equipment	2	2.56%	2.00	1.33 %
EM15 Burns	1	1.28%	1.00	0.66 %
FC40 Strategic and Tactical Operations	7	8.97%	10.50	6.98 %
FI72 Sprinkler Systems	1	1.28%	1.25	0.83 %
FP02 Specialized Equipment	2	2.56%	2.25	1.49 %
FS01 Fire Streams Theory	1	1.28%	1.00	0.66 %
FV20 Vehicle Extrication	1	1.28%	2.00	1.33 %
FV30 Extrication	2	2.56%	8.50	5.65 %
FW01 Boat Operations	1	1.28%	3.00	1.99 %
FW02 Dive Training	1	1.28%	2.00	1.33 %
FW03 SCBA Training	2	2.56%	3.50	2.32 %
FW04 Search & Rescue	1	1.28%	1.00	0.66 %
FW05 Ladder Training	1	1.28%	2.00	1.33 %
FW14 Truck Maintenance	1	1.28%	1.00	0.66 %
FW19 Thermal Imaging	1	1.28%	1.00	0.66 %
PREPLAN Company Inspection-Pre Plan	2	2.56%	2.00	1.33 %
SW1 Swiftwater Rescue 1	1	1.28%	24.00	15.97 %
Totals for Staff:		78	150.25	

CJJ-1501 JOHNSON, CRAIG J

AP10 Apparatus Check Procedures	1	5.26%	1.00	2.02 %
EM01 Emergency Medical Services	1	5.26%	2.00	4.04 %
EM02 Orientation Of The EMT/Responder	1	5.26%	0.50	1.01 %
EM13 Specialized Equipment	2	10.52%	2.00	4.04 %
EM16 Hyperthermia	1	5.26%	1.00	2.02 %
FC40 Strategic and Tactical Operations	2	10.52%	3.00	6.06 %
FI72 Sprinkler Systems	1	5.26%	1.25	2.52 %
FV30 Extrication	1	5.26%	0.50	1.01 %
FW01 Boat Operations	1	5.26%	3.00	6.06 %
FW02 Dive Training	2	10.52%	3.75	7.57 %
FW03 SCBA Training	1	5.26%	2.50	5.05 %
FW05 Ladder Training	1	5.26%	2.00	4.04 %

WELLINGTON FIRE DISTRICT

Training Analysis by Staff (Modified) Class Date Between {01/01/2007} And {12/31/2007}

Category	# Attended	Pct of Attended	Hours	Pct of Hours
CJJ-1501 JOHNSON, CRAIG J				
FW19 Thermal Imaging	1	5.26%	1.00	2.02 %
PREPLAN Company Inspection-Pre Plan	1	5.26%	0.50	1.01 %
SPEC Special Duty	1	5.26%	1.50	3.03 %
SW1 Swiftwater Rescue 1	1	5.26%	24.00	48.48 %
Totals for Staff:	19		49.50	

GRL-2964 LENT, GORDON R

AD03 Public Education	1	2.27%	3.00	3.49 %
AD04 Station Maintenance	3	6.81%	4.00	4.66 %
AP10 Apparatus Check Procedures	1	2.27%	1.00	1.16 %
DT01 General Driver Training	1	2.27%	1.50	1.74 %
EL01 Electrical Safety	1	2.27%	1.00	1.16 %
EM01 Emergency Medical Services	1	2.27%	2.00	2.33 %
EM02 Orientation Of The EMT/Responder	1	2.27%	0.50	0.58 %
EM06 Respiratory System	1	2.27%	0.75	0.87 %
EM12 Hypothermia	1	2.27%	1.00	1.16 %
EM13 Specialized Equipment	2	4.54%	2.00	2.33 %
EM15 Burns	1	2.27%	1.00	1.16 %
EM16 Hyperthermia	1	2.27%	1.00	1.16 %
FC40 Strategic and Tactical Operations	5	11.36%	7.50	8.74 %
FI72 Sprinkler Systems	1	2.27%	1.25	1.45 %
FP02 Specialized Equipment	2	4.54%	2.25	2.62 %
FS01 Fire Streams Theory	1	2.27%	1.00	1.16 %
FV20 Vehicle Extrication	2	4.54%	5.00	5.83 %
FV30 Extrication	2	4.54%	8.50	9.91 %
FW01 Boat Operations	1	2.27%	3.00	3.49 %
FW02 Dive Training	9	20.45%	30.50	35.56 %
FW03 SCBA Training	1	2.27%	2.50	2.91 %
FW05 Ladder Training	1	2.27%	2.00	2.33 %
FW07 Rope Rescue	1	2.27%	1.00	1.16 %
FW19 Thermal Imaging	1	2.27%	1.00	1.16 %
PREPLAN Company Inspection-Pre Plan	1	2.27%	0.50	0.58 %
SPEC Special Duty	1	2.27%	1.00	1.16 %
Totals for Staff:	44		85.75	

DAL-2066 LEWIS, DARIN

AD03 Public Education	1	0.90%	3.00	1.25 %
AD04 Station Maintenance	9	8.18%	13.00	5.43 %
AP02 Hose Testing	1	0.90%	1.00	0.41 %
AP10 Apparatus Check Procedures	22	20.00%	37.50	15.67 %
APPUMP Apparatus Pump Training	7	6.36%	8.00	3.34 %

WELLINGTON FIRE DISTRICT

Training Analysis by Staff (Modified)

Class Date Between {01/01/2007} And {12/31/2007}

Category	# Attended	Pct of Attended	Hours	Pct of Hours
DAL-2066 LEWIS, DARIN				
DT01 General Driver Training	11	10.00%	10.50	4.38 %
EL01 Electrical Safety	1	0.90%	1.00	0.41 %
EM01 Emergency Medical Services	1	0.90%	2.00	0.83 %
EM02 Orientation Of The EMT/Responder	1	0.90%	0.50	0.20 %
EM06 Respiratory System	1	0.90%	0.75	0.31 %
EM12 Hypothermia	1	0.90%	1.00	0.41 %
EM13 Specialized Equipment	2	1.81%	2.00	0.83 %
EM15 Burns	1	0.90%	1.00	0.41 %
FC40 Strategic and Tactical Operations	7	6.36%	10.50	4.38 %
FFII Firefighter II Skills	23	20.90%	104.00	43.46 %
FI72 Sprinkler Systems	1	0.90%	1.25	0.52 %
FP02 Specialized Equipment	1	0.90%	0.25	0.10 %
FS01 Fire Streams Theory	1	0.90%	1.00	0.41 %
FV20 Vehicle Extrication	2	1.81%	5.00	2.08 %
FV30 Extrication	1	0.90%	0.50	0.20 %
FW01 Boat Operations	1	0.90%	3.00	1.25 %
FW02 Dive Training	1	0.90%	2.00	0.83 %
FW03 SCBA Training	1	0.90%	2.50	1.04 %
FW11 Aerial Operations	3	2.72%	7.50	3.13 %
FW14 Truck Maintenance	7	6.36%	16.00	6.68 %
FW18 Safety Officer	1	0.90%	4.00	1.67 %
PREPLAN Company Inspection-Pre Plan	1	0.90%	0.50	0.20 %
Totals for Staff:		110	239.25	

EDL-0642 LITTLE, ETHAN D

AD03 Public Education	4	3.41%	5.00	2.87 %
AD04 Station Maintenance	22	18.80%	34.00	19.56 %
AP02 Hose Testing	2	1.70%	4.00	2.30 %
AP10 Apparatus Check Procedures	42	35.89%	67.00	38.56 %
APPUMP Apparatus Pump Training	3	2.56%	6.00	3.45 %
DT01 General Driver Training	7	5.98%	7.00	4.02 %
EM01 Emergency Medical Services	1	0.85%	2.00	1.15 %
EM06 Respiratory System	1	0.85%	0.75	0.43 %
EM16 Hyperthermia	1	0.85%	1.00	0.57 %
FC40 Strategic and Tactical Operations	12	10.25%	15.00	8.63 %
FI01 Fire Inspections	1	0.85%	1.00	0.57 %
FP02 Specialized Equipment	1	0.85%	1.00	0.57 %
FS01 Fire Streams Theory	1	0.85%	1.00	0.57 %
FV20 Vehicle Extrication	1	0.85%	2.00	1.15 %
FW03 SCBA Training	2	1.70%	3.50	2.01 %
FW04 Search & Rescue	1	0.85%	1.00	0.57 %
FW08 Hose Lays	1	0.85%	2.00	1.15 %

WELLINGTON FIRE DISTRICT

Training Analysis by Staff (Modified)

Class Date Between {01/01/2007} And {12/31/2007}

Category	# Attended	Pct of Attended	Hours	Pct of Hours
EDL-0642 LITTLE, ETHAN D				
FW11 Aerial Operations	3	2.56%	3.50	2.01 %
FW14 Truck Maintenance	8	6.83%	13.50	7.76 %
FW17 Ropes & Knots	1	0.85%	1.00	0.57 %
FW19 Thermal Imaging	1	0.85%	1.00	0.57 %
PREPLAN Company Inspection-Pre Plan	1	0.85%	1.50	0.86 %
Totals for Staff:	117		173.75	
FTM-4278 MARLEY, FRANK T				
AD02 Fire Department Organization	3	1.66%	4.50	1.47 %
AD04 Station Maintenance	46	25.55%	73.00	23.93 %
AP02 Hose Testing	3	1.66%	8.00	2.62 %
AP10 Apparatus Check Procedures	72	40.00%	122.00	40.00 %
APPUMP Apparatus Pump Training	1	0.55%	2.00	0.65 %
DT01 General Driver Training	3	1.66%	3.00	0.98 %
EL01 Electrical Safety	1	0.55%	2.50	0.81 %
EM02 Orientation Of The EMT/Responder	1	0.55%	0.50	0.16 %
EM06 Respiratory System	1	0.55%	0.75	0.24 %
EM12 Hypothermia	1	0.55%	1.00	0.32 %
EM13 Specialized Equipment	2	1.11%	2.00	0.65 %
EM16 Hyperthermia	1	0.55%	1.00	0.32 %
EMT-B EMT Basic Training	1	0.55%	11.00	3.60 %
FA32 Fireworks Handling	2	1.11%	8.00	2.62 %
FC40 Strategic and Tactical Operations	10	5.55%	13.00	4.26 %
FI01 Fire Inspections	2	1.11%	2.50	0.81 %
FI72 Sprinkler Systems	1	0.55%	1.25	0.40 %
FP02 Specialized Equipment	1	0.55%	0.25	0.08 %
FS01 Fire Streams Theory	1	0.55%	1.00	0.32 %
FV20 Vehicle Extrication	2	1.11%	5.00	1.63 %
FV30 Extrication	2	1.11%	2.00	0.65 %
FW01 Boat Operations	1	0.55%	3.00	0.98 %
FW02 Dive Training	2	1.11%	3.75	1.22 %
FW03 SCBA Training	1	0.55%	2.50	0.81 %
FW05 Ladder Training	1	0.55%	2.00	0.65 %
FW08 Hose Lays	1	0.55%	1.00	0.32 %
FW11 Aerial Operations	1	0.55%	1.50	0.49 %
FW14 Truck Maintenance	11	6.11%	21.00	6.88 %
FW17 Ropes & Knots	1	0.55%	1.00	0.32 %
PREPLAN Company Inspection-Pre Plan	4	2.22%	5.00	1.63 %
Totals for Staff:	180		305.00	

WELLINGTON FIRE DISTRICT

Training Analysis by Staff (Modified)

Class Date Between {01/01/2007} And {12/31/2007}

Category	# Attended	Pct of Attended	Hours	Pct of Hours
WCM-3191 MOORE, WILLIAM C				
AD04 Station Maintenance	1	4.54%	1.00	2.91 %
AP02 Hose Testing	1	4.54%	4.00	11.67 %
AP10 Apparatus Check Procedures	1	4.54%	1.00	2.91 %
EL01 Electrical Safety	1	4.54%	1.00	2.91 %
EM06 Respiratory System	1	4.54%	0.75	2.18 %
EM12 Hypothermia	1	4.54%	1.00	2.91 %
EM13 Specialized Equipment	2	9.09%	2.00	5.83 %
EM16 Hyperthermia	1	4.54%	1.00	2.91 %
FC40 Strategic and Tactical Operations	4	18.18%	6.50	18.97 %
FI72 Sprinkler Systems	1	4.54%	1.25	3.64 %
FP02 Specialized Equipment	1	4.54%	0.25	0.72 %
FS01 Fire Streams Theory	1	4.54%	1.00	2.91 %
FV20 Vehicle Extrication	2	9.09%	5.00	14.59 %
FW01 Boat Operations	1	4.54%	3.00	8.75 %
FW03 SCBA Training	1	4.54%	2.50	7.29 %
FW05 Ladder Training	1	4.54%	2.00	5.83 %
FW19 Thermal Imaging	1	4.54%	1.00	2.91 %
Totals for Staff:	22		34.25	
DJO-0649 OSWALD, DERICK J				
AD03 Public Education	8	15.68%	16.25	21.52 %
AD04 Station Maintenance	6	11.76%	8.50	11.25 %
AP02 Hose Testing	1	1.96%	2.50	3.31 %
AP10 Apparatus Check Procedures	11	21.56%	19.00	25.16 %
APPUMP Apparatus Pump Training	3	5.88%	3.50	4.63 %
DT01 General Driver Training	4	7.84%	4.50	5.96 %
EL01 Electrical Safety	1	1.96%	1.00	1.32 %
EM06 Respiratory System	1	1.96%	0.75	0.99 %
EM13 Specialized Equipment	1	1.96%	1.00	1.32 %
EM15 Burns	1	1.96%	1.00	1.32 %
EM16 Hyperthermia	1	1.96%	1.00	1.32 %
FC40 Strategic and Tactical Operations	7	13.72%	8.50	11.25 %
FS01 Fire Streams Theory	1	1.96%	1.00	1.32 %
FW02 Dive Training	1	1.96%	2.00	2.64 %
FW05 Ladder Training	1	1.96%	2.00	2.64 %
FW11 Aerial Operations	1	1.96%	1.00	1.32 %
FW14 Truck Maintenance	1	1.96%	1.00	1.32 %
FW19 Thermal Imaging	1	1.96%	1.00	1.32 %
Totals for Staff:	51		75.50	

WELLINGTON FIRE DISTRICT

Training Analysis by Staff (Modified)

Class Date Between {01/01/2007} And {12/31/2007}

Category	# Attended	Pct of Attended	Hours	Pct of Hours
TAP-4160 PITTS, TROY A				
AD02 Fire Department Organization	3	2.20%	4.50	1.95 %
AD04 Station Maintenance	17	12.50%	21.50	9.34 %
AP02 Hose Testing	3	2.20%	6.50	2.82 %
AP10 Apparatus Check Procedures	45	33.08%	89.50	38.91 %
APPUMP Apparatus Pump Training	7	5.14%	8.50	3.69 %
DT01 General Driver Training	4	2.94%	4.00	1.73 %
EL01 Electrical Safety	1	0.73%	1.00	0.43 %
EM06 Respiratory System	1	0.73%	0.75	0.32 %
EM12 Hypothermia	1	0.73%	1.00	0.43 %
EM15 Burns	1	0.73%	1.00	0.43 %
EM16 Hyperthermia	1	0.73%	1.00	0.43 %
FC40 Strategic and Tactical Operations	12	8.82%	16.00	6.95 %
FP02 Specialized Equipment	3	2.20%	3.25	1.41 %
FS01 Fire Streams Theory	1	0.73%	1.00	0.43 %
FV20 Vehicle Extrication	1	0.73%	3.00	1.30 %
FW02 Dive Training	6	4.41%	19.50	8.47 %
FW03 SCBA Training	2	1.47%	3.50	1.52 %
FW04 Search & Rescue	1	0.73%	1.00	0.43 %
FW05 Ladder Training	1	0.73%	2.00	0.86 %
FW07 Rope Rescue	1	0.73%	1.00	0.43 %
FW11 Aerial Operations	2	1.47%	2.00	0.86 %
FW12 Hydrant Training	1	0.73%	2.00	0.86 %
FW14 Truck Maintenance	10	7.35%	13.50	5.86 %
FW17 Ropes & Knots	1	0.73%	1.00	0.43 %
OFF O1 Officers Mtg/Training	7	5.14%	17.00	7.39 %
PREPLAN Company Inspection-Pre Plan	3	2.20%	5.00	2.17 %
Totals for Staff:	136		230.00	

TSP-5843 POLEN, TIMOTHY S

AD03 Public Education	1	0.95%	4.50	2.73 %
AD04 Station Maintenance	12	11.42%	19.50	11.83 %
AP01 Pumper Overhaul and Repair	1	0.95%	2.00	1.21 %
AP02 Hose Testing	3	2.85%	7.00	4.24 %
AP10 Apparatus Check Procedures	32	30.47%	51.50	31.25 %
APPUMP Apparatus Pump Training	7	6.66%	8.00	4.85 %
DT01 General Driver Training	4	3.80%	3.50	2.12 %
EL01 Electrical Safety	1	0.95%	1.00	0.60 %
EM01 Emergency Medical Services	2	1.90%	8.00	4.85 %
EM02 Orientation Of The EMT/Responder	1	0.95%	0.50	0.30 %
EM13 Specialized Equipment	2	1.90%	2.00	1.21 %
EM15 Burns	1	0.95%	1.00	0.60 %
EM16 Hyperthermia	1	0.95%	1.00	0.60 %

WELLINGTON FIRE DISTRICT

Training Analysis by Staff (Modified)

Class Date Between {01/01/2007} And {12/31/2007}

Category	# Attended	Pct of Attended	Hours	Pct of Hours
TSP-5843 POLEN, TIMOTHY S				
FC40 Strategic and Tactical Operations	7	6.66%	9.00	5.46 %
FI72 Sprinkler Systems	1	0.95%	1.25	0.75 %
FS01 Fire Streams Theory	1	0.95%	1.00	0.60 %
FV20 Vehicle Extrication	1	0.95%	3.00	1.82 %
FV30 Extrication	1	0.95%	0.50	0.30 %
FW02 Dive Training	1	0.95%	2.00	1.21 %
FW03 SCBA Training	1	0.95%	1.00	0.60 %
FW04 Search & Rescue	1	0.95%	1.50	0.91 %
FW05 Ladder Training	1	0.95%	2.00	1.21 %
FW10 Hydrant Testing	1	0.95%	3.00	1.82 %
FW11 Aerial Operations	4	3.80%	6.50	3.94 %
FW12 Hydrant Training	1	0.95%	1.00	0.60 %
FW14 Truck Maintenance	9	8.57%	12.50	7.58 %
FW19 Thermal Imaging	1	0.95%	1.00	0.60 %
HZ00 HazMat Team/Advisory	2	1.90%	4.50	2.73 %
PREPLAN Company Inspection-Pre Plan	4	3.80%	5.50	3.33 %
Totals for Staff:				
	105		164.75	

CLR-5299 REGAL, CHAD L

AD03 Public Education	2	2.02%	2.00	0.96 %
AD04 Station Maintenance	10	10.10%	17.50	8.41 %
AP02 Hose Testing	1	1.01%	2.00	0.96 %
AP10 Apparatus Check Procedures	24	24.24%	43.00	20.67 %
APPUMP Apparatus Pump Training	6	6.06%	7.00	3.36 %
DT01 General Driver Training	9	9.09%	8.00	3.84 %
EM02 Orientation Of The EMT/Responder	1	1.01%	0.50	0.24 %
EM06 Respiratory System	1	1.01%	0.75	0.36 %
EM13 Specialized Equipment	1	1.01%	1.00	0.48 %
EM16 Hyperthermia	1	1.01%	1.00	0.48 %
FC40 Strategic and Tactical Operations	8	8.08%	10.50	5.04 %
FI01 Fire Inspections	2	2.02%	8.00	3.84 %
FI72 Sprinkler Systems	1	1.01%	1.25	0.60 %
FI73 Fire Extinguisher Training	1	1.01%	1.00	0.48 %
FS01 Fire Streams Theory	1	1.01%	1.00	0.48 %
FV02 Fire Safety Inspector Training	15	15.15%	59.00	28.36 %
FV20 Vehicle Extrication	2	2.02%	5.00	2.40 %
FV30 Extrication	1	1.01%	0.50	0.24 %
FW01 Boat Operations	1	1.01%	3.00	1.44 %
FW02 Dive Training	1	1.01%	2.00	0.96 %
FW03 SCBA Training	1	1.01%	2.50	1.20 %
FW04 Search & Rescue	1	1.01%	1.00	0.48 %
FW11 Aerial Operations	2	2.02%	2.00	0.96 %

WELLINGTON FIRE DISTRICT

Training Analysis by Staff (Modified)

Class Date Between {01/01/2007} And {12/31/2007}

Category	# Attended	Pct of Attended	Hours	Pct of Hours
CLR-5299 REGAL, CHAD L				
FW14 Truck Maintenance	1	1.01%	1.50	0.72 %
FW17 Ropes & Knots	1	1.01%	1.00	0.48 %
FW19 Thermal Imaging	1	1.01%	1.00	0.48 %
PREPLAN Company Inspection-Pre Plan	1	1.01%	0.50	0.24 %
PT Physical Training	1	1.01%	0.50	0.24 %
SW1 Swiftwater Rescue 1	1	1.01%	24.00	11.53 %
Totals for Staff:	99		208.00	

SJR-3750 REGAL, SCOTT J

AD03 Public Education	2	1.78%	6.00	3.68 %
AD04 Station Maintenance	10	8.92%	14.00	8.58 %
AP02 Hose Testing	1	0.89%	3.50	2.14 %
AP10 Apparatus Check Procedures	44	39.28%	71.25	43.71 %
APPUMP Apparatus Pump Training	5	4.46%	6.00	3.68 %
DT01 General Driver Training	9	8.03%	10.00	6.13 %
EL01 Electrical Safety	1	0.89%	1.00	0.61 %
EM02 Orientation Of The EMT/Responder	1	0.89%	0.50	0.30 %
EM06 Respiratory System	1	0.89%	0.75	0.46 %
EM12 Hypothermia	1	0.89%	1.00	0.61 %
EM13 Specialized Equipment	2	1.78%	2.00	1.22 %
EM15 Burns	1	0.89%	1.00	0.61 %
EM16 Hyperthermia	1	0.89%	1.00	0.61 %
FC40 Strategic and Tactical Operations	10	8.92%	13.50	8.28 %
FI01 Fire Inspections	3	2.67%	3.50	2.14 %
FI72 Sprinkler Systems	1	0.89%	1.25	0.76 %
FI73 Fire Extinguisher Training	1	0.89%	1.00	0.61 %
FP02 Specialized Equipment	1	0.89%	0.25	0.15 %
FS01 Fire Streams Theory	1	0.89%	1.00	0.61 %
FV30 Extrication	1	0.89%	0.50	0.30 %
FW02 Dive Training	1	0.89%	2.00	1.22 %
FW03 SCBA Training	1	0.89%	2.50	1.53 %
FW08 Hose Lays	3	2.67%	4.50	2.76 %
FW11 Aerial Operations	2	1.78%	3.50	2.14 %
FW14 Truck Maintenance	5	4.46%	8.50	5.21 %
FW17 Ropes & Knots	1	0.89%	1.00	0.61 %
PREPLAN Company Inspection-Pre Plan	2	1.78%	2.00	1.22 %
Totals for Staff:	112		163.00	

DLS-6393 SHINSKY, DANIEL L

AD03 Public Education	2	1.25%	6.00	2.00 %
AD04 Station Maintenance	17	10.69%	23.00	7.67 %

WELLINGTON FIRE DISTRICT

Training Analysis by Staff (Modified)

Class Date Between {01/01/2007} And {12/31/2007}

Category	# Attended	Pct of Attended	Hours	Pct of Hours
DLS-6393 SHINSKY, DANIEL L				
AP02 Hose Testing	5	3.14%	11.00	3.67 %
AP10 Apparatus Check Procedures	52	32.70%	84.50	28.21 %
APPUMP Apparatus Pump Training	9	5.66%	9.00	3.00 %
DT01 General Driver Training	15	9.43%	15.50	5.17 %
EM01 Emergency Medical Services	2	1.25%	3.00	1.00 %
EM02 Orientation Of The EMT/Responder	1	0.62%	0.50	0.16 %
EM06 Respiratory System	1	0.62%	0.75	0.25 %
EM13 Specialized Equipment	1	0.62%	1.00	0.33 %
EM16 Hyperthermia	1	0.62%	1.00	0.33 %
FA32 Fireworks Handling	1	0.62%	3.00	1.00 %
FC40 Strategic and Tactical Operations	12	7.54%	16.00	5.34 %
FI01 Fire Inspections	3	1.88%	12.00	4.00 %
FI72 Sprinkler Systems	1	0.62%	1.25	0.41 %
FI73 Fire Extinguisher Training	1	0.62%	1.00	0.33 %
FS01 Fire Streams Theory	1	0.62%	1.00	0.33 %
FV01 Basic Fire Investigation	1	0.62%	6.50	2.17 %
FV02 Fire Safety Inspector Training	15	9.43%	59.00	19.69 %
FV20 Vehicle Extrication	1	0.62%	2.00	0.66 %
FV30 Extrication	1	0.62%	0.50	0.16 %
FW01 Boat Operations	1	0.62%	3.00	1.00 %
FW02 Dive Training	1	0.62%	2.00	0.66 %
FW03 SCBA Training	1	0.62%	1.00	0.33 %
FW04 Search & Rescue	1	0.62%	1.00	0.33 %
FW11 Aerial Operations	2	1.25%	2.00	0.66 %
FW14 Truck Maintenance	4	2.51%	4.50	1.50 %
FW17 Ropes & Knots	1	0.62%	1.00	0.33 %
FW19 Thermal Imaging	1	0.62%	1.00	0.33 %
PREPLAN Company Inspection-Pre Plan	2	1.25%	2.00	0.66 %
PT Physical Training	1	0.62%	0.50	0.16 %
SW1 Swiftwater Rescue 1	1	0.62%	24.00	8.01 %
Totals for Staff:		159	299.50	

BLS-2966 SLACK, BRIAN L

AD02 Fire Department Organization	3	1.75%	10.50	3.22 %
AD03 Public Education	2	1.16%	3.50	1.07 %
AD04 Station Maintenance	29	16.95%	53.50	16.41 %
AP01 Pumper Overhaul and Repair	1	0.58%	2.00	0.61 %
AP02 Hose Testing	6	3.50%	17.50	5.36 %
AP10 Apparatus Check Procedures	49	28.65%	79.50	24.38 %
APPUMP Apparatus Pump Training	4	2.33%	5.00	1.53 %
DT01 General Driver Training	10	5.84%	10.00	3.06 %
EL01 Electrical Safety	1	0.58%	1.00	0.30 %

WELLINGTON FIRE DISTRICT

Training Analysis by Staff (Modified) Class Date Between {01/01/2007} And {12/31/2007}

Category	# Attended	Pct of Attended	Hours	Pct of Hours
BLS-2966 SLACK, BRIAN L				
EM01 Emergency Medical Services	1	0.58%	2.00	0.61 %
EM02 Orientation Of The EMT/Responder	1	0.58%	0.50	0.15 %
EM06 Respiratory System	1	0.58%	0.75	0.23 %
EM12 Hypothermia	1	0.58%	1.00	0.30 %
EM13 Specialized Equipment	2	1.16%	1.50	0.46 %
EM15 Burns	1	0.58%	1.00	0.30 %
EM16 Hyperthermia	1	0.58%	1.00	0.30 %
FC40 Strategic and Tactical Operations	7	4.09%	11.50	3.52 %
FI72 Sprinkler Systems	1	0.58%	1.25	0.38 %
FP02 Specialized Equipment	2	1.16%	2.25	0.69 %
FS01 Fire Streams Theory	1	0.58%	1.00	0.30 %
FV20 Vehicle Extrication	1	0.58%	3.00	0.92 %
FV30 Extrication	2	1.16%	2.00	0.61 %
FW01 Boat Operations	1	0.58%	3.00	0.92 %
FW02 Dive Training	2	1.16%	3.75	1.15 %
FW03 SCBA Training	1	0.58%	2.50	0.76 %
FW04 Search & Rescue	2	1.16%	2.50	0.76 %
FW05 Ladder Training	1	0.58%	2.00	0.61 %
FW10 Hydrant Testing	1	0.58%	3.00	0.92 %
FW11 Aerial Operations	7	4.09%	10.50	3.22 %
FW14 Truck Maintenance	17	9.94%	37.50	11.50 %
FW18 Safety Officer	1	0.58%	4.00	1.22 %
OFF O1 Officers Mtg/Training	8	4.67%	20.00	6.13 %
PREPLAN Company Inspection-Pre Plan	2	1.16%	2.00	0.61 %
SW1 Swiftwater Rescue 1	1	0.58%	24.00	7.36 %
Totals for Staff:				
	171		326.00	

ENT-2269 THORN, ED N

AD03 Public Education	1	0.86%	3.00	1.27 %
AD04 Station Maintenance	11	9.48%	11.50	4.89 %
AP02 Hose Testing	2	1.72%	5.00	2.12 %
AP10 Apparatus Check Procedures	34	29.31%	53.00	22.57 %
APPUMP Apparatus Pump Training	4	3.44%	4.00	1.70 %
DT01 General Driver Training	9	7.75%	10.00	4.25 %
EL01 Electrical Safety	1	0.86%	1.00	0.42 %
EM01 Emergency Medical Services	2	1.72%	3.00	1.27 %
EM02 Orientation Of The EMT/Responder	1	0.86%	0.50	0.21 %
EM06 Respiratory System	1	0.86%	0.75	0.31 %
EM12 Hypothermia	1	0.86%	1.00	0.42 %
EM13 Specialized Equipment	1	0.86%	1.00	0.42 %
EM15 Burns	1	0.86%	1.00	0.42 %
EM16 Hyperthermia	1	0.86%	1.00	0.42 %

WELLINGTON FIRE DISTRICT

Training Analysis by Staff (Modified)

Class Date Between {01/01/2007} And {12/31/2007}

Category	# Attended	Pct of Attended	Hours	Pct of Hours
ENT-2269 THORN, ED N				
FC40 Strategic and Tactical Operations	7	6.03%	8.50	3.62 %
FFII Firefighter II Skills	23	19.82%	108.00	46.00 %
FI72 Sprinkler Systems	1	0.86%	1.25	0.53 %
FI73 Fire Extinguisher Training	1	0.86%	1.00	0.42 %
FP02 Specialized Equipment	1	0.86%	0.25	0.10 %
FS01 Fire Streams Theory	1	0.86%	1.00	0.42 %
FV20 Vehicle Extrication	2	1.72%	5.00	2.12 %
FV30 Extrication	1	0.86%	0.50	0.21 %
FW01 Boat Operations	1	0.86%	3.00	1.27 %
FW02 Dive Training	1	0.86%	2.00	0.85 %
FW03 SCBA Training	1	0.86%	1.00	0.42 %
FW05 Ladder Training	1	0.86%	2.00	0.85 %
FW11 Aerial Operations	1	0.86%	1.50	0.63 %
FW14 Truck Maintenance	1	0.86%	1.00	0.42 %
FW19 Thermal Imaging	1	0.86%	1.00	0.42 %
PREPLAN Company Inspection-Pre Plan	2	1.72%	2.00	0.85 %
Totals for Staff:	116		234.75	

DAT-5280 TWINING, DANIEL A

AD03 Public Education	1	5.26%	1.00	4.04 %
AP10 Apparatus Check Procedures	2	10.52%	3.50	14.14 %
EL01 Electrical Safety	1	5.26%	1.00	4.04 %
EM01 Emergency Medical Services	1	5.26%	2.00	8.08 %
EM02 Orientation Of The EMT/Responder	1	5.26%	0.50	2.02 %
EM12 Hypothermia	1	5.26%	1.00	4.04 %
EM13 Specialized Equipment	1	5.26%	1.00	4.04 %
EM15 Burns	1	5.26%	1.00	4.04 %
FC40 Strategic and Tactical Operations	2	10.52%	3.00	12.12 %
FP02 Specialized Equipment	1	5.26%	0.25	1.01 %
FV30 Extrication	1	5.26%	0.50	2.02 %
FW01 Boat Operations	1	5.26%	3.00	12.12 %
FW03 SCBA Training	1	5.26%	2.50	10.10 %
FW11 Aerial Operations	2	10.52%	3.00	12.12 %
FW17 Ropes & Knots	1	5.26%	1.00	4.04 %
PREPLAN Company Inspection-Pre Plan	1	5.26%	0.50	2.02 %
Totals for Staff:	19		24.75	

WWV-2308 VARNER, WILLIAM W

AD03 Public Education	4	10.52%	12.50	20.57 %
AD04 Station Maintenance	6	15.78%	9.50	15.63 %
AP10 Apparatus Check Procedures	6	15.78%	9.00	14.81 %

WELLINGTON FIRE DISTRICT

Training Analysis by Staff (Modified)

Class Date Between {01/01/2007} And {12/31/2007}

Category	# Attended	Pct of Attended	Hours	Pct of Hours
WWV-2308 VARNER, WILLIAM W				
EL01 Electrical Safety	1	2.63%	1.00	1.64 %
EM01 Emergency Medical Services	1	2.63%	2.00	3.29 %
EM06 Respiratory System	1	2.63%	0.75	1.23 %
EM12 Hypothermia	1	2.63%	1.00	1.64 %
EM13 Specialized Equipment	2	5.26%	2.00	3.29 %
EM15 Burns	1	2.63%	1.00	1.64 %
EM16 Hyperthermia	1	2.63%	1.00	1.64 %
FC40 Strategic and Tactical Operations	4	10.52%	6.50	10.69 %
FI72 Sprinkler Systems	1	2.63%	1.25	2.05 %
FP02 Specialized Equipment	2	5.26%	1.25	2.05 %
FV20 Vehicle Extrication	1	2.63%	3.00	4.93 %
FW02 Dive Training	1	2.63%	2.00	3.29 %
FW03 SCBA Training	1	2.63%	1.00	1.64 %
FW05 Ladder Training	1	2.63%	2.00	3.29 %
FW14 Truck Maintenance	2	5.26%	3.00	4.93 %
FW19 Thermal Imaging	1	2.63%	1.00	1.64 %
Totals for Staff:	38		60.75	

RJW-9438 WALKER, ROBERT J

AD01 Administrative Procedures	2	2.63%	4.25	2.29 %
AD02 Fire Department Organization	15	19.73%	37.75	20.35 %
AD03 Public Education	10	13.15%	19.00	10.24 %
AD04 Station Maintenance	2	2.63%	2.00	1.07 %
AP10 Apparatus Check Procedures	1	1.31%	1.00	0.53 %
EL01 Electrical Safety	1	1.31%	1.00	0.53 %
EM01 Emergency Medical Services	2	2.63%	3.00	1.61 %
EM02 Orientation Of The EMT/Responder	1	1.31%	0.50	0.26 %
EM06 Respiratory System	1	1.31%	0.75	0.40 %
EM12 Hypothermia	1	1.31%	1.00	0.53 %
EM13 Specialized Equipment	2	2.63%	2.00	1.07 %
EM15 Burns	1	1.31%	1.00	0.53 %
EM16 Hyperthermia	1	1.31%	1.00	0.53 %
EMT-B EMT Basic Training	1	1.31%	11.00	5.92 %
FC40 Strategic and Tactical Operations	3	3.94%	5.50	2.96 %
FI02 Fire Instructor	1	1.31%	8.00	4.31 %
FI72 Sprinkler Systems	1	1.31%	1.25	0.67 %
FP02 Specialized Equipment	1	1.31%	0.25	0.13 %
FV01 Basic Fire Investigation	1	1.31%	6.50	3.50 %
FV02 Fire Safety Inspector Training	1	1.31%	7.50	4.04 %
FV03 LCAFI	3	3.94%	7.00	3.77 %
FV30 Extrication	1	1.31%	0.50	0.26 %
FW01 Boat Operations	1	1.31%	3.00	1.61 %

WELLINGTON FIRE DISTRICT

Training Analysis by Staff (Modified)

Class Date Between {01/01/2007} And {12/31/2007}

Category	# Attended	Pct of Attended	Hours	Pct of Hours
RJW-9438 WALKER, ROBERT J				
FW02 Dive Training	2	2.63%	3.75	2.02 %
FW03 SCBA Training	1	1.31%	2.50	1.34 %
FW05 Ladder Training	1	1.31%	2.00	1.07 %
FW11 Aerial Operations	1	1.31%	2.00	1.07 %
FW18 Safety Officer	1	1.31%	4.00	2.15 %
FW19 Thermal Imaging	1	1.31%	1.00	0.53 %
OFD Officer Leadership Development	1	1.31%	8.00	4.31 %
OFF O1 Officers Mtg/Training	8	10.52%	21.00	11.32 %
PREPLAN Company Inspection-Pre Plan	1	1.31%	0.50	0.26 %
SPEC Special Duty	5	6.57%	16.00	8.62 %
Totals for Staff:	76		185.50	

WWR-1710 WATTERS, WILLIAM R

AD04 Station Maintenance	2	8.69%	2.50	7.75 %
AP10 Apparatus Check Procedures	2	8.69%	3.50	10.85 %
EM01 Emergency Medical Services	1	4.34%	2.00	6.20 %
EM02 Orientation Of The EMT/Responder	1	4.34%	0.50	1.55 %
EM06 Respiratory System	1	4.34%	0.75	2.32 %
EM12 Hypothermia	1	4.34%	1.00	3.10 %
EM13 Specialized Equipment	1	4.34%	1.00	3.10 %
EM16 Hyperthermia	1	4.34%	1.00	3.10 %
FC40 Strategic and Tactical Operations	3	13.04%	3.00	9.30 %
FI72 Sprinkler Systems	1	4.34%	1.25	3.87 %
FP02 Specialized Equipment	1	4.34%	0.25	0.77 %
FV20 Vehicle Extrication	1	4.34%	2.00	6.20 %
FV30 Extrication	1	4.34%	0.50	1.55 %
FW01 Boat Operations	1	4.34%	3.00	9.30 %
FW03 SCBA Training	1	4.34%	2.50	7.75 %
FW05 Ladder Training	1	4.34%	2.00	6.20 %
FW18 Safety Officer	1	4.34%	4.00	12.40 %
FW19 Thermal Imaging	1	4.34%	1.00	3.10 %
PREPLAN Company Inspection-Pre Plan	1	4.34%	0.50	1.55 %
Totals for Staff:	23		32.25	

GMW-3858 WETHERBEE, GLENN M

AD01 Administrative Procedures	1	0.45%	2.00	0.47 %
AD02 Fire Department Organization	9	4.12%	24.50	5.84 %
AD03 Public Education	7	3.21%	13.25	3.16 %
AD04 Station Maintenance	44	20.18%	65.50	15.63 %
AP01 Pumper Overhaul and Repair	1	0.45%	2.00	0.47 %
AP02 Hose Testing	4	1.83%	11.00	2.62 %

WELLINGTON FIRE DISTRICT

Training Analysis by Staff (Modified) Class Date Between {01/01/2007} And {12/31/2007}

Category	# Attended	Pct of Attended	Hours	Pct of Hours
GMW-3858 WETHERBEE, GLENN M				
AP10 Apparatus Check Procedures	72	33.02%	122.00	29.11 %
APPUMP Apparatus Pump Training	6	2.75%	9.00	2.14 %
DT01 General Driver Training	3	1.37%	3.50	0.83 %
EL01 Electrical Safety	1	0.45%	1.00	0.23 %
EM01 Emergency Medical Services	2	0.91%	3.00	0.71 %
EM02 Orientation Of The EMT/Responder	1	0.45%	0.50	0.11 %
EM06 Respiratory System	1	0.45%	0.75	0.17 %
EM12 Hypothermia	1	0.45%	1.00	0.23 %
EM13 Specialized Equipment	2	0.91%	2.00	0.47 %
EM15 Burns	1	0.45%	1.00	0.23 %
EM16 Hyperthermia	1	0.45%	1.00	0.23 %
EM52 Trauma	1	0.45%	8.00	1.90 %
EMT-B EMT Basic Training	1	0.45%	11.00	2.62 %
FC40 Strategic and Tactical Operations	10	4.58%	16.00	3.81 %
FC93 IS-400	3	1.37%	15.50	3.69 %
FI01 Fire Inspections	2	0.91%	1.75	0.41 %
FI02 Fire Instructor	1	0.45%	8.00	1.90 %
FI72 Sprinkler Systems	1	0.45%	1.25	0.29 %
FP02 Specialized Equipment	2	0.91%	7.25	1.73 %
FS01 Fire Streams Theory	1	0.45%	1.00	0.23 %
FV20 Vehicle Extrication	2	0.91%	5.00	1.19 %
FV30 Extrication	1	0.45%	0.50	0.11 %
FW01 Boat Operations	1	0.45%	3.00	0.71 %
FW02 Dive Training	2	0.91%	3.75	0.89 %
FW03 SCBA Training	2	0.91%	3.50	0.83 %
FW04 Search & Rescue	1	0.45%	1.00	0.23 %
FW05 Ladder Training	1	0.45%	2.00	0.47 %
FW11 Aerial Operations	2	0.91%	3.50	0.83 %
FW13 Water Shuttle	2	0.91%	5.00	1.19 %
FW14 Truck Maintenance	8	3.66%	12.50	2.98 %
FW17 Ropes & Knots	1	0.45%	1.00	0.23 %
FW18 Safety Officer	1	0.45%	4.00	0.95 %
FW19 Thermal Imaging	1	0.45%	1.00	0.23 %
OFD Officer Leadership Development	1	0.45%	8.00	1.90 %
OFF O1 Officers Mtg/Training	8	3.66%	20.00	4.77 %
PREPLAN Company Inspection-Pre Plan	2	0.91%	2.00	0.47 %
SPEC Special Duty	3	1.37%	10.50	2.50 %
Totals for Staff:				
	218		419.00	

WEW-9715 WOLF, WILLIAM E

AD03 Public Education	2	2.17%	6.50	4.56 %
AD04 Station Maintenance	18	19.56%	21.00	14.76 %

WELLINGTON FIRE DISTRICT

Training Analysis by Staff (Modified)

Class Date Between {01/01/2007} And {12/31/2007}

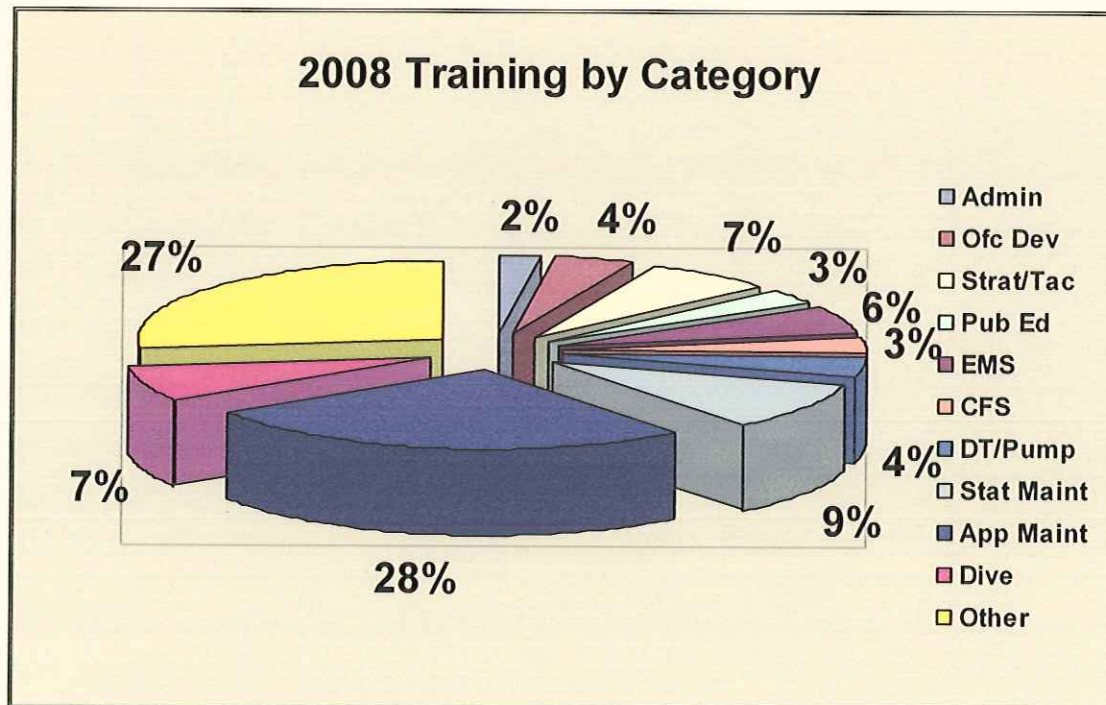
Category	# Attended	Pct of Attended	Hours	Pct of Hours
WEW-9715 WOLF, WILLIAM E				
AP02 Hose Testing	1	1.08%	2.00	1.40 %
AP10 Apparatus Check Procedures	34	36.95%	58.00	40.77 %
APPUMP Apparatus Pump Training	2	2.17%	4.00	2.81 %
DT01 General Driver Training	5	5.43%	6.00	4.21 %
EL01 Electrical Safety	1	1.08%	2.50	1.75 %
EM01 Emergency Medical Services	1	1.08%	2.00	1.40 %
EM02 Orientation Of The EMT/Responder	1	1.08%	0.50	0.35 %
EM06 Respiratory System	1	1.08%	0.75	0.52 %
EM12 Hypothermia	1	1.08%	1.00	0.70 %
EM13 Specialized Equipment	2	2.17%	2.00	1.40 %
EM16 Hyperthermia	1	1.08%	1.00	0.70 %
FC40 Strategic and Tactical Operations	6	6.52%	8.50	5.97 %
FI01 Fire Inspections	1	1.08%	1.00	0.70 %
FI72 Sprinkler Systems	1	1.08%	1.25	0.87 %
FP02 Specialized Equipment	1	1.08%	0.25	0.17 %
FV30 Extrication	1	1.08%	0.50	0.35 %
FW01 Boat Operations	1	1.08%	3.00	2.10 %
FW03 SCBA Training	1	1.08%	2.50	1.75 %
FW05 Ladder Training	1	1.08%	2.00	1.40 %
FW14 Truck Maintenance	6	6.52%	10.50	7.38 %
FW18 Safety Officer	1	1.08%	4.00	2.81 %
FW19 Thermal Imaging	1	1.08%	1.00	0.70 %
PREPLAN Company Inspection-Pre Plan	1	1.08%	0.50	0.35 %
Totals for Staff:	92		142.25	

Grand Totals: 2,594

4,944.75

Wellington Fire District Training by Category

Category	Hours Trained
General Firefighting (Other)	1334.25
Apparatus Maintenance	1324.50
Station Maintenance	469.50
Dive/Water Operations	354
Strategic/Tactical Operations	337
EMS	276.75
Officer Development	214
Driver's Training/Pump Operations	209.50
Certified Fire Safety Inspector	162.75
Public Education	156
Administrative Procedures	108.50



WELLINGTON FIRE DISTRICT

TRAINING BY CATEGORY

Class Date Between {01/01/2007} And {12/31/2007}

Category	Classes	Pct of Classes	Attendees	Pct of Attendees	Hours	Pct of Hours
AD01 Administrative Procedures	2	0.21 %	3	0.11 %	6.25	0.12 %
AD02 Fire Department Organization	18	1.95 %	42	1.61 %	102.25	2.06 %
AD03 Public Education	26	2.82 %	73	2.81 %	156.00	3.15 %
AD04 Station Maintenance	148	16.10 %	319	12.29 %	469.50	9.49 %
AP01 Pumper Overhaul and Repair	2	0.21 %	4	0.15 %	8.00	0.16 %
AP02 Hose Testing	17	1.84 %	40	1.54 %	99.00	2.00 %
AP10 Apparatus Check Procedures	328	35.69 %	671	25.85 %	1,135.50	22.95 %
APPUMP Apparatus Pump Training	36	3.91 %	74	2.85 %	91.00	1.83 %
DT01 General Driver Training	49	5.33 %	111	4.27 %	118.50	2.39 %
EL01 Electrical Safety	2	0.21 %	28	1.07 %	31.00	0.62 %
EM01 Emergency Medical Services	3	0.32 %	32	1.23 %	63.00	1.27 %
EM02 Orientation Of The EMT/Responder	1	0.10 %	27	1.04 %	13.50	0.27 %
EM06 Respiratory System	1	0.10 %	28	1.07 %	21.00	0.42 %
EM12 Hypothermia	1	0.10 %	25	0.96 %	25.00	0.50 %
EM13 Specialized Equipment	2	0.21 %	53	2.04 %	52.25	1.05 %
EM15 Burns	1	0.10 %	22	0.84 %	22.00	0.44 %
EM16 Hyperthermia	1	0.10 %	26	1.00 %	26.00	0.52 %
EM20 CPR Recertification	1	0.10 %	1	0.03 %	2.00	0.04 %
EM52 Trauma	1	0.10 %	1	0.03 %	8.00	0.16 %
EMT-B EMT Basic Training	1	0.10 %	4	0.15 %	44.00	0.88 %
FA32 Fireworks Handling	2	0.21 %	4	0.15 %	16.00	0.32 %
FC40 Strategic and Tactical Operations	50	5.44 %	206	7.93 %	288.50	5.83 %
FC93 IS-400	3	0.32 %	3	0.11 %	15.50	0.31 %
FF1A Firefighter 1A Class	6	0.65 %	6	0.23 %	46.50	0.94 %
FFII Firefighter II Skills	25	2.72 %	96	3.69 %	440.00	8.89 %
FI01 Fire Inspections	8	0.87 %	14	0.53 %	29.75	0.60 %
FI02 Fire Instructor	1	0.10 %	2	0.07 %	16.00	0.32 %
FI72 Sprinkler Systems	1	0.10 %	28	1.07 %	35.00	0.70 %
FI73 Fire Extinguisher Training	2	0.21 %	4	0.15 %	4.00	0.08 %
FP02 Specialized Equipment	5	0.54 %	36	1.38 %	34.25	0.69 %
FS01 Fire Streams Theory	1	0.10 %	23	0.88 %	23.00	0.46 %
FV01 Basic Fire Investigation	1	0.10 %	3	0.11 %	19.50	0.39 %
FV02 Fire Safety Inspector Training	16	1.74 %	32	1.23 %	133.00	2.68 %
FV03 LCAFI	3	0.32 %	3	0.11 %	7.00	0.14 %
FV20 Vehicle Extrication	2	0.21 %	33	1.27 %	81.00	1.63 %
FV30 Extrication	3	0.32 %	31	1.19 %	32.50	0.65 %
FW01 Boat Operations	1	0.10 %	25	0.96 %	75.00	1.51 %
FW02 Dive Training	11	1.19 %	53	2.04 %	138.00	2.78 %
FW03 SCBA Training	5	0.54 %	33	1.27 %	70.50	1.42 %
FW04 Search & Rescue	5	0.54 %	10	0.38 %	11.00	0.22 %
FW05 Ladder Training	1	0.10 %	27	1.04 %	52.00	1.05 %
FW07 Rope Rescue	1	0.10 %	3	0.11 %	3.00	0.06 %
FW08 Hose Lays	3	0.32 %	6	0.23 %	9.00	0.18 %
FW10 Hydrant Testing	1	0.10 %	2	0.07 %	6.00	0.12 %
FW11 Aerial Operations	16	1.74 %	38	1.46 %	60.00	1.21 %
FW12 Hydrant Training	2	0.21 %	4	0.15 %	6.00	0.12 %
FW13 Water Shuttle	2	0.21 %	3	0.11 %	7.00	0.14 %
FW14 Truck Maintenance	54	5.87 %	107	4.12 %	181.00	3.65 %

WELLINGTON FIRE DISTRICT

TRAINING BY CATEGORY

Class Date Between {01/01/2007} And {12/31/2007}

Category	Classes	Pct of Classes	Attendees	Pct of Attendees	Hours	Pct of Hours
FW17 Ropes & Knots	5	0.54 %	10	0.38 %	10.00	0.20 %
FW18 Safety Officer	3	0.32 %	10	0.38 %	37.50	0.75 %
FW19 Thermal Imaging	1	0.10 %	25	0.96 %	25.00	0.50 %
HAZMAT 1 Hazmat Awareness	1	0.10 %	1	0.03 %	6.00	0.12 %
HZ00 HazMat Team/Advisory	2	0.21 %	2	0.07 %	4.50	0.09 %
HZ02 Hazmat and Operations	2	0.21 %	2	0.07 %	14.50	0.29 %
OFD Officer Leadership Development	4	0.43 %	5	0.19 %	98.00	1.98 %
OFF O1 Officers Mtg/Training	8	0.87 %	46	1.77 %	116.00	2.34 %
PREPLAN Company Inspection-Pre Plan	12	1.30 %	49	1.88 %	48.50	0.98 %
PT Physical Training	1	0.10 %	2	0.07 %	1.00	0.02 %
SPEC Special Duty	7	0.76 %	15	0.57 %	36.00	0.72 %
SW1 Swiftwater Rescue 1	1	0.10 %	9	0.34 %	216.00	4.36 %
Totals	919		2595		4,946.75	

WELLINGTON FIRE DISTRICT

TRAINING BY CATEGORY

Class Date Between {01/01/2007} And {12/31/2007}

Category	Classes	Pct of Classes	Attendees	Pct of Attendees	Hours	Pct of Hours
AD01 Administrative Procedures	2	0.21 %	3	0.11%	6.25	0.12 %
AD02 Fire Department Organization	18	1.95 %	42	1.61%	102.25	2.06 %
AD03 Public Education	26	2.82 %	73	2.81%	156.00	3.15 %
AD04 Station Maintenance	148	16.10 %	319	12.29%	469.50	9.49 %
AP01 Pumper Overhaul and Repair	2	0.21 %	4	0.15%	8.00	0.16 %
AP02 Hose Testing	17	1.84 %	40	1.54%	99.00	2.00 %
AP10 Apparatus Check Procedures	328	35.69 %	671	25.85%	1,135.50	22.95 %
APPUMP Apparatus Pump Training	36	3.91 %	74	2.85%	91.00	1.83 %
DT01 General Driver Training	49	5.33 %	111	4.27%	118.50	2.39 %
EL01 Electrical Safety	2	0.21 %	28	1.07%	31.00	0.62 %
EM01 Emergency Medical Services	3	0.32 %	32	1.23%	63.00	1.27 %
EM02 Orientation Of The EMT/Responder	1	0.10 %	27	1.04%	13.50	0.27 %
EM06 Respiratory System	1	0.10 %	28	1.07%	21.00	0.42 %
EM12 Hypothermia	1	0.10 %	25	0.96%	25.00	0.50 %
EM13 Specialized Equipment	2	0.21 %	53	2.04%	52.25	1.05 %
EM15 Burns	1	0.10 %	22	0.84%	22.00	0.44 %
EM16 Hyperthermia	1	0.10 %	26	1.00%	26.00	0.52 %
EM20 CPR Recertification	1	0.10 %	1	0.03%	2.00	0.04 %
EM52 Trauma	1	0.10 %	1	0.03%	8.00	0.16 %
EMT-B EMT Basic Training	1	0.10 %	4	0.15%	44.00	0.88 %
FA32 Fireworks Handling	2	0.21 %	4	0.15%	16.00	0.32 %
FC40 Strategic and Tactical Operations	50	5.44 %	206	7.93%	288.50	5.83 %
FC93 IS-400	3	0.32 %	3	0.11%	15.50	0.31 %
FF1A Firefighter 1A Class	6	0.65 %	6	0.23%	46.50	0.94 %
FFII Firefighter II Skills	25	2.72 %	96	3.69%	440.00	8.89 %
FI01 Fire Inspections	8	0.87 %	14	0.53%	29.75	0.60 %
FI02 Fire Instructor	1	0.10 %	2	0.07%	16.00	0.32 %
FI72 Sprinkler Systems	1	0.10 %	28	1.07%	35.00	0.70 %
FI73 Fire Extinguisher Training	2	0.21 %	4	0.15%	4.00	0.08 %
FP02 Specialized Equipment	5	0.54 %	36	1.38%	34.25	0.69 %
FS01 Fire Streams Theory	1	0.10 %	23	0.88%	23.00	0.46 %
FV01 Basic Fire Investigation	1	0.10 %	3	0.11%	19.50	0.39 %
FV02 Fire Safety Inspector Training	16	1.74 %	32	1.23%	133.00	2.68 %
FV03 LCAFI	3	0.32 %	3	0.11%	7.00	0.14 %
FV20 Vehicle Extrication	2	0.21 %	33	1.27%	81.00	1.63 %
FV30 Extrication	3	0.32 %	31	1.19%	32.50	0.65 %
FW01 Boat Operations	1	0.10 %	25	0.96%	75.00	1.51 %
FW02 Dive Training	11	1.19 %	53	2.04%	138.00	2.78 %
FW03 SCBA Training	5	0.54 %	33	1.27%	70.50	1.42 %
FW04 Search & Rescue	5	0.54 %	10	0.38%	11.00	0.22 %
FW05 Ladder Training	1	0.10 %	27	1.04%	52.00	1.05 %
FW07 Rope Rescue	1	0.10 %	3	0.11%	3.00	0.06 %
FW08 Hose Lays	3	0.32 %	6	0.23%	9.00	0.18 %
FW10 Hydrant Testing	1	0.10 %	2	0.07%	6.00	0.12 %
FW11 Aerial Operations	16	1.74 %	38	1.46%	60.00	1.21 %
FW12 Hydrant Training	2	0.21 %	4	0.15%	6.00	0.12 %
FW13 Water Shuttle	2	0.21 %	3	0.11%	7.00	0.14 %
FW14 Truck Maintenance	54	5.87 %	107	4.12%	181.00	3.65 %

WELLINGTON FIRE DISTRICT

TRAINING BY CATEGORY

Class Date Between {01/01/2007} And {12/31/2007}

Category	Classes	Pct of Classes	Attendees	Pct of Attendees	Hours	Pct of Hours
FW17 Ropes & Knots	5	0.54 %	10	0.38%	10.00	0.20 %
FW18 Safety Officer	3	0.32 %	10	0.38%	37.50	0.75 %
FW19 Thermal Imaging	1	0.10 %	25	0.96%	25.00	0.50 %
HAZMAT 1 Hazmat Awareness	1	0.10 %	1	0.03%	6.00	0.12 %
HZ00 HazMat Team/Advisory	2	0.21 %	2	0.07%	4.50	0.09 %
HZ02 Hazmat and Operations	2	0.21 %	2	0.07%	14.50	0.29 %
OFD Officer Leadership Development	4	0.43 %	5	0.19%	98.00	1.98 %
OFF O1 Officers Mtg/Training	8	0.87 %	46	1.77%	116.00	2.34 %
PREPLAN Company Inspection-Pre Plan	12	1.30 %	49	1.88%	48.50	0.98 %
PT Physical Training	1	0.10 %	2	0.07%	1.00	0.02 %
SPEC Special Duty	7	0.76 %	15	0.57%	36.00	0.72 %
SW1 Swiftwater Rescue 1	1	0.10 %	9	0.34%	216.00	4.36 %
Totals	919		2595		4,946.75	

WELLINGTON FIRE DISTRICT

TRAINING BY CATEGORY

Class Date Between {01/01/2007} And {12/31/2007}

Category	Classes	Pct of Classes	Attendees	Pct of Attendees	Hours	Pct of Hours
AD01 Administrative Procedures	2	0.21 %	3	0.11%	6.25	0.12 %
AD02 Fire Department Organization	18	1.95 %	42	1.61%	102.25	2.06 %
AD03 Public Education	26	2.82 %	73	2.81%	156.00	3.15 %
AD04 Station Maintenance	148	16.10 %	319	12.29%	469.50	9.49 %
AP01 Pumper Overhaul and Repair	2	0.21 %	4	0.15%	8.00	0.16 %
AP02 Hose Testing	17	1.84 %	40	1.54%	99.00	2.00 %
AP10 Apparatus Check Procedures	328	35.69 %	671	25.85%	1,135.50	22.95 %
APPUMP Apparatus Pump Training	36	3.91 %	74	2.85%	91.00	1.83 %
DT01 General Driver Training	49	5.33 %	111	4.27%	118.50	2.39 %
EL01 Electrical Safety	2	0.21 %	28	1.07%	31.00	0.62 %
EM01 Emergency Medical Services	3	0.32 %	32	1.23%	63.00	1.27 %
EM02 Orientation Of The EMT/Responder	1	0.10 %	27	1.04%	13.50	0.27 %
EM06 Respiratory System	1	0.10 %	28	1.07%	21.00	0.42 %
EM12 Hypothermia	1	0.10 %	25	0.96%	25.00	0.50 %
EM13 Specialized Equipment	2	0.21 %	53	2.04%	52.25	1.05 %
EM15 Burns	1	0.10 %	22	0.84%	22.00	0.44 %
EM16 Hyperthermia	1	0.10 %	26	1.00%	26.00	0.52 %
EM20 CPR Recertification	1	0.10 %	1	0.03%	2.00	0.04 %
EM52 Trauma	1	0.10 %	1	0.03%	8.00	0.16 %
EMT-B EMT Basic Training	1	0.10 %	4	0.15%	44.00	0.88 %
FA32 Fireworks Handling	2	0.21 %	4	0.15%	16.00	0.32 %
FC40 Strategic and Tactical Operations	50	5.44 %	206	7.93%	288.50	5.83 %
FC93 IS-400	3	0.32 %	3	0.11%	15.50	0.31 %
FF1A Firefighter 1A Class	6	0.65 %	6	0.23%	46.50	0.94 %
FFII Firefighter II Skills	25	2.72 %	96	3.69%	440.00	8.89 %
FI01 Fire Inspections	8	0.87 %	14	0.53%	29.75	0.60 %
FI02 Fire Instructor	1	0.10 %	2	0.07%	16.00	0.32 %
FI72 Sprinkler Systems	1	0.10 %	28	1.07%	35.00	0.70 %
FI73 Fire Extinguisher Training	2	0.21 %	4	0.15%	4.00	0.08 %
FP02 Specialized Equipment	5	0.54 %	36	1.38%	34.25	0.69 %
FS01 Fire Streams Theory	1	0.10 %	23	0.88%	23.00	0.46 %
FV01 Basic Fire Investigation	1	0.10 %	3	0.11%	19.50	0.39 %
FV02 Fire Safety Inspector Training	16	1.74 %	32	1.23%	133.00	2.68 %
FV03 LCAFI	3	0.32 %	3	0.11%	7.00	0.14 %
FV20 Vehicle Extrication	2	0.21 %	33	1.27%	81.00	1.63 %
FV30 Extrication	3	0.32 %	31	1.19%	32.50	0.65 %
FW01 Boat Operations	1	0.10 %	25	0.96%	75.00	1.51 %
FW02 Dive Training	11	1.19 %	53	2.04%	138.00	2.78 %
FW03 SCBA Training	5	0.54 %	33	1.27%	70.50	1.42 %
FW04 Search & Rescue	5	0.54 %	10	0.38%	11.00	0.22 %
FW05 Ladder Training	1	0.10 %	27	1.04%	52.00	1.05 %
FW07 Rope Rescue	1	0.10 %	3	0.11%	3.00	0.06 %
FW08 Hose Lays	3	0.32 %	6	0.23%	9.00	0.18 %
FW10 Hydrant Testing	1	0.10 %	2	0.07%	6.00	0.12 %
FW11 Aerial Operations	16	1.74 %	38	1.46%	60.00	1.21 %
FW12 Hydrant Training	2	0.21 %	4	0.15%	6.00	0.12 %
FW13 Water Shuttle	2	0.21 %	3	0.11%	7.00	0.14 %
FW14 Truck Maintenance	54	5.87 %	107	4.12%	181.00	3.65 %

WELLINGTON FIRE DISTRICT

TRAINING BY CATEGORY

Class Date Between {01/01/2007} And {12/31/2007}

Category	Classes	Pct of Classes	Attendees	Pct of Attendees	Hours	Pct of Hours
FW17 Ropes & Knots	5	0.54 %	10	0.38%	10.00	0.20 %
FW18 Safety Officer	3	0.32 %	10	0.38%	37.50	0.75 %
FW19 Thermal Imaging	1	0.10 %	25	0.96%	25.00	0.50 %
HAZMAT 1 Hazmat Awareness	1	0.10 %	1	0.03%	6.00	0.12 %
HZ00 HazMat Team/Advisory	2	0.21 %	2	0.07%	4.50	0.09 %
HZ02 Hazmat and Operations	2	0.21 %	2	0.07%	14.50	0.29 %
OFD Officer Leadership Development	4	0.43 %	5	0.19%	98.00	1.98 %
OFF O1 Officers Mtg/Training	8	0.87 %	46	1.77%	116.00	2.34 %
PREPLAN Company Inspection-Pre Plan	12	1.30 %	49	1.88%	48.50	0.98 %
PT Physical Training	1	0.10 %	2	0.07%	1.00	0.02 %
SPEC Special Duty	7	0.76 %	15	0.57%	36.00	0.72 %
SW1 Swiftwater Rescue 1	1	0.10 %	9	0.34%	216.00	4.36 %
Totals	919		2595		4,946.75	

WELLINGTON FIRE DISTRICT

TRAINING BY CATEGORY

Class Date Between {01/01/2007} And {12/31/2007}

Category	Classes	Pct of Classes	Attendees	Pct of Attendees	Hours	Pct of Hours
AD01 Administrative Procedures	2	0.21 %	3	0.11%	6.25	0.12 %
AD02 Fire Department Organization	18	1.95 %	42	1.61%	102.25	2.06 %
AD03 Public Education	26	2.82 %	73	2.81%	156.00	3.15 %
AD04 Station Maintenance	148	16.10 %	319	12.29%	469.50	9.49 %
AP01 Pumper Overhaul and Repair	2	0.21 %	4	0.15%	8.00	0.16 %
AP02 Hose Testing	17	1.84 %	40	1.54%	99.00	2.00 %
AP10 Apparatus Check Procedures	328	35.69 %	671	25.85%	1,135.50	22.95 %
APPUMP Apparatus Pump Training	36	3.91 %	74	2.85%	91.00	1.83 %
DT01 General Driver Training	49	5.33 %	111	4.27%	118.50	2.39 %
EL01 Electrical Safety	2	0.21 %	28	1.07%	31.00	0.62 %
EM01 Emergency Medical Services	3	0.32 %	32	1.23%	63.00	1.27 %
EM02 Orientation Of The EMT/Responder	1	0.10 %	27	1.04%	13.50	0.27 %
EM06 Respiratory System	1	0.10 %	28	1.07%	21.00	0.42 %
EM12 Hypothermia	1	0.10 %	25	0.96%	25.00	0.50 %
EM13 Specialized Equipment	2	0.21 %	53	2.04%	52.25	1.05 %
EM15 Burns	1	0.10 %	22	0.84%	22.00	0.44 %
EM16 Hyperthermia	1	0.10 %	26	1.00%	26.00	0.52 %
EM20 CPR Recertification	1	0.10 %	1	0.03%	2.00	0.04 %
EM52 Trauma	1	0.10 %	1	0.03%	8.00	0.16 %
EMT-B EMT Basic Training	1	0.10 %	4	0.15%	44.00	0.88 %
FA32 Fireworks Handling	2	0.21 %	4	0.15%	16.00	0.32 %
FC40 Strategic and Tactical Operations	50	5.44 %	206	7.93%	288.50	5.83 %
FC93 IS-400	3	0.32 %	3	0.11%	15.50	0.31 %
FF1A Firefighter 1A Class	6	0.65 %	6	0.23%	46.50	0.94 %
FFII Firefighter II Skills	25	2.72 %	96	3.69%	440.00	8.89 %
FI01 Fire Inspections	8	0.87 %	14	0.53%	29.75	0.60 %
FI02 Fire Instructor	1	0.10 %	2	0.07%	16.00	0.32 %
FI72 Sprinkler Systems	1	0.10 %	28	1.07%	35.00	0.70 %
FI73 Fire Extinguisher Training	2	0.21 %	4	0.15%	4.00	0.08 %
FP02 Specialized Equipment	5	0.54 %	36	1.38%	34.25	0.69 %
FS01 Fire Streams Theory	1	0.10 %	23	0.88%	23.00	0.46 %
FV01 Basic Fire Investigation	1	0.10 %	3	0.11%	19.50	0.39 %
FV02 Fire Safety Inspector Training	16	1.74 %	32	1.23%	133.00	2.68 %
FV03 LCAFI	3	0.32 %	3	0.11%	7.00	0.14 %
FV20 Vehicle Extrication	2	0.21 %	33	1.27%	81.00	1.63 %
FV30 Extrication	3	0.32 %	31	1.19%	32.50	0.65 %
FW01 Boat Operations	1	0.10 %	25	0.96%	75.00	1.51 %
FW02 Dive Training	11	1.19 %	53	2.04%	138.00	2.78 %
FW03 SCBA Training	5	0.54 %	33	1.27%	70.50	1.42 %
FW04 Search & Rescue	5	0.54 %	10	0.38%	11.00	0.22 %
FW05 Ladder Training	1	0.10 %	27	1.04%	52.00	1.05 %
FW07 Rope Rescue	1	0.10 %	3	0.11%	3.00	0.06 %
FW08 Hose Lays	3	0.32 %	6	0.23%	9.00	0.18 %
FW10 Hydrant Testing	1	0.10 %	2	0.07%	6.00	0.12 %
FW11 Aerial Operations	16	1.74 %	38	1.46%	60.00	1.21 %
FW12 Hydrant Training	2	0.21 %	4	0.15%	6.00	0.12 %
FW13 Water Shuttle	2	0.21 %	3	0.11%	7.00	0.14 %
FW14 Truck Maintenance	54	5.87 %	107	4.12%	181.00	3.65 %

WELLINGTON FIRE DISTRICT

TRAINING BY CATEGORY

Class Date Between {01/01/2007} And {12/31/2007}

Category	Classes	Pct of Classes	Attendees	Pct of Attendees	Hours	Pct of Hours
FW17 Ropes & Knots	5	0.54 %	10	0.38 %	10.00	0.20 %
FW18 Safety Officer	3	0.32 %	10	0.38 %	37.50	0.75 %
FW19 Thermal Imaging	1	0.10 %	25	0.96 %	25.00	0.50 %
HAZMAT 1 Hazmat Awareness	1	0.10 %	1	0.03 %	6.00	0.12 %
HZ00 HazMat Team/Advisory	2	0.21 %	2	0.07 %	4.50	0.09 %
HZ02 Hazmat and Operations	2	0.21 %	2	0.07 %	14.50	0.29 %
OFD Officer Leadership Development	4	0.43 %	5	0.19 %	98.00	1.98 %
OFF O1 Officers Mtg/Training	8	0.87 %	46	1.77 %	116.00	2.34 %
PREPLAN Company Inspection-Pre Plan	12	1.30 %	49	1.88 %	48.50	0.98 %
PT Physical Training	1	0.10 %	2	0.07 %	1.00	0.02 %
SPEC Special Duty	7	0.76 %	15	0.57 %	36.00	0.72 %
SW1 Swiftwater Rescue 1	1	0.10 %	9	0.34 %	216.00	4.36 %
Totals	919		2595		4,946.75	

WELLINGTON FIRE DISTRICT

TRAINING BY CATEGORY

Class Date Between {01/01/2007} And {12/31/2007}

Category	Classes	Pct of Classes	Attendees	Pct of Attendees	Hours	Pct of Hours
AD01 Administrative Procedures	2	0.21 %	3	0.11%	6.25	0.12 %
AD02 Fire Department Organization	18	1.95 %	42	1.61%	102.25	2.06 %
AD03 Public Education	26	2.82 %	73	2.81%	156.00	3.15 %
AD04 Station Maintenance	148	16.10 %	319	12.29%	469.50	9.49 %
AP01 Pumper Overhaul and Repair	2	0.21 %	4	0.15%	8.00	0.16 %
AP02 Hose Testing	17	1.84 %	40	1.54%	99.00	2.00 %
AP10 Apparatus Check Procedures	328	35.69 %	671	25.85%	1,135.50	22.95 %
APPUMP Apparatus Pump Training	36	3.91 %	74	2.85%	91.00	1.83 %
DT01 General Driver Training	49	5.33 %	111	4.27%	118.50	2.39 %
EL01 Electrical Safety	2	0.21 %	28	1.07%	31.00	0.62 %
EM01 Emergency Medical Services	3	0.32 %	32	1.23%	63.00	1.27 %
EM02 Orientation Of The EMT/Responder	1	0.10 %	27	1.04%	13.50	0.27 %
EM06 Respiratory System	1	0.10 %	28	1.07%	21.00	0.42 %
EM12 Hypothermia	1	0.10 %	25	0.96%	25.00	0.50 %
EM13 Specialized Equipment	2	0.21 %	53	2.04%	52.25	1.05 %
EM15 Burns	1	0.10 %	22	0.84%	22.00	0.44 %
EM16 Hyperthermia	1	0.10 %	26	1.00%	26.00	0.52 %
EM20 CPR Recertification	1	0.10 %	1	0.03%	2.00	0.04 %
EM52 Trauma	1	0.10 %	1	0.03%	8.00	0.16 %
EMT-B EMT Basic Training	1	0.10 %	4	0.15%	44.00	0.88 %
FA32 Fireworks Handling	2	0.21 %	4	0.15%	16.00	0.32 %
FC40 Strategic and Tactical Operations	50	5.44 %	206	7.93%	288.50	5.83 %
FC93 IS-400	3	0.32 %	3	0.11%	15.50	0.31 %
FF1A Firefighter 1A Class	6	0.65 %	6	0.23%	46.50	0.94 %
FFII Firefighter II Skills	25	2.72 %	96	3.69%	440.00	8.89 %
FI01 Fire Inspections	8	0.87 %	14	0.53%	29.75	0.60 %
FI02 Fire Instructor	1	0.10 %	2	0.07%	16.00	0.32 %
FI72 Sprinkler Systems	1	0.10 %	28	1.07%	35.00	0.70 %
FI73 Fire Extinguisher Training	2	0.21 %	4	0.15%	4.00	0.08 %
FP02 Specialized Equipment	5	0.54 %	36	1.38%	34.25	0.69 %
FS01 Fire Streams Theory	1	0.10 %	23	0.88%	23.00	0.46 %
FV01 Basic Fire Investigation	1	0.10 %	3	0.11%	19.50	0.39 %
FV02 Fire Safety Inspector Training	16	1.74 %	32	1.23%	133.00	2.68 %
FV03 LCAFI	3	0.32 %	3	0.11%	7.00	0.14 %
FV20 Vehicle Extrication	2	0.21 %	33	1.27%	81.00	1.63 %
FV30 Extrication	3	0.32 %	31	1.19%	32.50	0.65 %
FW01 Boat Operations	1	0.10 %	25	0.96%	75.00	1.51 %
FW02 Dive Training	11	1.19 %	53	2.04%	138.00	2.78 %
FW03 SCBA Training	5	0.54 %	33	1.27%	70.50	1.42 %
FW04 Search & Rescue	5	0.54 %	10	0.38%	11.00	0.22 %
FW05 Ladder Training	1	0.10 %	27	1.04%	52.00	1.05 %
FW07 Rope Rescue	1	0.10 %	3	0.11%	3.00	0.06 %
FW08 Hose Lays	3	0.32 %	6	0.23%	9.00	0.18 %
FW10 Hydrant Testing	1	0.10 %	2	0.07%	6.00	0.12 %
FW11 Aerial Operations	16	1.74 %	38	1.46%	60.00	1.21 %
FW12 Hydrant Training	2	0.21 %	4	0.15%	6.00	0.12 %
FW13 Water Shuttle	2	0.21 %	3	0.11%	7.00	0.14 %
FW14 Truck Maintenance	54	5.87 %	107	4.12%	181.00	3.65 %

WELLINGTON FIRE DISTRICT

TRAINING BY CATEGORY

Class Date Between {01/01/2007} And {12/31/2007}

Category	Classes	Pct of Classes	Attendees	Pct of Attendees	Hours	Pct of Hours
FW17 Ropes & Knots	5	0.54 %	10	0.38%	10.00	0.20 %
FW18 Safety Officer	3	0.32 %	10	0.38%	37.50	0.75 %
FW19 Thermal Imaging	1	0.10 %	25	0.96%	25.00	0.50 %
HAZMAT 1 Hazmat Awareness	1	0.10 %	1	0.03%	6.00	0.12 %
HZ00 HazMat Team/Advisory	2	0.21 %	2	0.07%	4.50	0.09 %
HZ02 Hazmat and Operations	2	0.21 %	2	0.07%	14.50	0.29 %
OFD Officer Leadership Development	4	0.43 %	5	0.19%	98.00	1.98 %
OFF O1 Officers Mtg/Training	8	0.87 %	46	1.77%	116.00	2.34 %
PREPLAN Company Inspection-Pre Plan	12	1.30 %	49	1.88%	48.50	0.98 %
PT Physical Training	1	0.10 %	2	0.07%	1.00	0.02 %
SPEC Special Duty	7	0.76 %	15	0.57%	36.00	0.72 %
SW1 Swiftwater Rescue 1	1	0.10 %	9	0.34%	216.00	4.36 %
Totals	919		2595		4,946.75	

WELLINGTON FIRE DISTRICT

TRAINING BY CATEGORY

Class Date Between {01/01/2007} And {12/31/2007}

Category	Classes	Pct of Classes	Attendees	Pct of Attendees	Hours	Pct of Hours
AD01 Administrative Procedures	2	0.21 %	3	0.11 %	6.25	0.12 %
AD02 Fire Department Organization	18	1.95 %	42	1.61 %	102.25	2.06 %
AD03 Public Education	26	2.82 %	73	2.81 %	156.00	3.15 %
AD04 Station Maintenance	148	16.10 %	319	12.29 %	469.50	9.49 %
AP01 Pumper Overhaul and Repair	2	0.21 %	4	0.15 %	8.00	0.16 %
AP02 Hose Testing	17	1.84 %	40	1.54 %	99.00	2.00 %
AP10 Apparatus Check Procedures	328	35.69 %	671	25.85 %	1,135.50	22.95 %
APPUMP Apparatus Pump Training	36	3.91 %	74	2.85 %	91.00	1.83 %
DT01 General Driver Training	49	5.33 %	111	4.27 %	118.50	2.39 %
EL01 Electrical Safety	2	0.21 %	28	1.07 %	31.00	0.62 %
EM01 Emergency Medical Services	3	0.32 %	32	1.23 %	63.00	1.27 %
EM02 Orientation Of The EMT/Responder	1	0.10 %	27	1.04 %	13.50	0.27 %
EM06 Respiratory System	1	0.10 %	28	1.07 %	21.00	0.42 %
EM12 Hypothermia	1	0.10 %	25	0.96 %	25.00	0.50 %
EM13 Specialized Equipment	2	0.21 %	53	2.04 %	52.25	1.05 %
EM15 Burns	1	0.10 %	22	0.84 %	22.00	0.44 %
EM16 Hyperthermia	1	0.10 %	26	1.00 %	26.00	0.52 %
EM20 CPR Recertification	1	0.10 %	1	0.03 %	2.00	0.04 %
EM52 Trauma	1	0.10 %	1	0.03 %	8.00	0.16 %
EMT-B EMT Basic Training	1	0.10 %	4	0.15 %	44.00	0.88 %
FA32 Fireworks Handling	2	0.21 %	4	0.15 %	16.00	0.32 %
FC40 Strategic and Tactical Operations	50	5.44 %	206	7.93 %	288.50	5.83 %
FC93 IS-400	3	0.32 %	3	0.11 %	15.50	0.31 %
FF1A Firefighter 1A Class	6	0.65 %	6	0.23 %	46.50	0.94 %
FFII Firefighter II Skills	25	2.72 %	96	3.69 %	440.00	8.89 %
FI01 Fire Inspections	8	0.87 %	14	0.53 %	29.75	0.60 %
FI02 Fire Instructor	1	0.10 %	2	0.07 %	16.00	0.32 %
FI72 Sprinkler Systems	1	0.10 %	28	1.07 %	35.00	0.70 %
FI73 Fire Extinguisher Training	2	0.21 %	4	0.15 %	4.00	0.08 %
FP02 Specialized Equipment	5	0.54 %	36	1.38 %	34.25	0.69 %
FS01 Fire Streams Theory	1	0.10 %	23	0.88 %	23.00	0.46 %
FV01 Basic Fire Investigation	1	0.10 %	3	0.11 %	19.50	0.39 %
FV02 Fire Safety Inspector Training	16	1.74 %	32	1.23 %	133.00	2.68 %
FV03 LCAFI	3	0.32 %	3	0.11 %	7.00	0.14 %
FV20 Vehicle Extrication	2	0.21 %	33	1.27 %	81.00	1.63 %
FV30 Extrication	3	0.32 %	31	1.19 %	32.50	0.65 %
FW01 Boat Operations	1	0.10 %	25	0.96 %	75.00	1.51 %
FW02 Dive Training	11	1.19 %	53	2.04 %	138.00	2.78 %
FW03 SCBA Training	5	0.54 %	33	1.27 %	70.50	1.42 %
FW04 Search & Rescue	5	0.54 %	10	0.38 %	11.00	0.22 %
FW05 Ladder Training	1	0.10 %	27	1.04 %	52.00	1.05 %
FW07 Rope Rescue	1	0.10 %	3	0.11 %	3.00	0.06 %
FW08 Hose Lays	3	0.32 %	6	0.23 %	9.00	0.18 %
FW10 Hydrant Testing	1	0.10 %	2	0.07 %	6.00	0.12 %
FW11 Aerial Operations	16	1.74 %	38	1.46 %	60.00	1.21 %
FW12 Hydrant Training	2	0.21 %	4	0.15 %	6.00	0.12 %
FW13 Water Shuttle	2	0.21 %	3	0.11 %	7.00	0.14 %
FW14 Truck Maintenance	54	5.87 %	107	4.12 %	181.00	3.65 %

WELLINGTON FIRE DISTRICT

TRAINING BY CATEGORY

Class Date Between {01/01/2007} And {12/31/2007}

Category	Classes	Pct of Classes	Attendees	Pct of Attendees	Hours	Pct of Hours
FW17 Ropes & Knots	5	0.54 %	10	0.38%	10.00	0.20 %
FW18 Safety Officer	3	0.32 %	10	0.38%	37.50	0.75 %
FW19 Thermal Imaging	1	0.10 %	25	0.96%	25.00	0.50 %
HAZMAT 1 Hazmat Awareness	1	0.10 %	1	0.03%	6.00	0.12 %
HZ00 HazMat Team/Advisory	2	0.21 %	2	0.07%	4.50	0.09 %
HZ02 Hazmat and Operations	2	0.21 %	2	0.07%	14.50	0.29 %
OFD Officer Leadership Development	4	0.43 %	5	0.19%	98.00	1.98 %
OFF O1 Officers Mtg/Training	8	0.87 %	46	1.77%	116.00	2.34 %
PREPLAN Company Inspection-Pre Plan	12	1.30 %	49	1.88%	48.50	0.98 %
PT Physical Training	1	0.10 %	2	0.07%	1.00	0.02 %
SPEC Special Duty	7	0.76 %	15	0.57%	36.00	0.72 %
SW1 Swiftwater Rescue 1	1	0.10 %	9	0.34%	216.00	4.36 %
Totals	919		2595		4,946.75	

WELLINGTON FIRE DISTRICT

TRAINING BY CATEGORY

Class Date Between {01/01/2007} And {12/31/2007}

Category	Classes	Pct of Classes	Attendees	Pct of Attendees	Hours	Pct of Hours
AD01 Administrative Procedures	2	0.21 %	3	0.11%	6.25	0.12 %
AD02 Fire Department Organization	18	1.95 %	42	1.61%	102.25	2.06 %
AD03 Public Education	26	2.82 %	73	2.81%	156.00	3.15 %
AD04 Station Maintenance	148	16.10 %	319	12.29%	469.50	9.49 %
AP01 Pumper Overhaul and Repair	2	0.21 %	4	0.15%	8.00	0.16 %
AP02 Hose Testing	17	1.84 %	40	1.54%	99.00	2.00 %
AP10 Apparatus Check Procedures	328	35.69 %	671	25.85%	1,135.50	22.95 %
APPUMP Apparatus Pump Training	36	3.91 %	74	2.85%	91.00	1.83 %
DT01 General Driver Training	49	5.33 %	111	4.27%	118.50	2.39 %
EL01 Electrical Safety	2	0.21 %	28	1.07%	31.00	0.62 %
EM01 Emergency Medical Services	3	0.32 %	32	1.23%	63.00	1.27 %
EM02 Orientation Of The EMT/Responder	1	0.10 %	27	1.04%	13.50	0.27 %
EM06 Respiratory System	1	0.10 %	28	1.07%	21.00	0.42 %
EM12 Hypothermia	1	0.10 %	25	0.96%	25.00	0.50 %
EM13 Specialized Equipment	2	0.21 %	53	2.04%	52.25	1.05 %
EM15 Burns	1	0.10 %	22	0.84%	22.00	0.44 %
EM16 Hyperthermia	1	0.10 %	26	1.00%	26.00	0.52 %
EM20 CPR Recertification	1	0.10 %	1	0.03%	2.00	0.04 %
EM52 Trauma	1	0.10 %	1	0.03%	8.00	0.16 %
EMT-B EMT Basic Training	1	0.10 %	4	0.15%	44.00	0.88 %
FA32 Fireworks Handling	2	0.21 %	4	0.15%	16.00	0.32 %
FC40 Strategic and Tactical Operations	50	5.44 %	206	7.93%	288.50	5.83 %
FC93 IS-400	3	0.32 %	3	0.11%	15.50	0.31 %
FF1A Firefighter 1A Class	6	0.65 %	6	0.23%	46.50	0.94 %
FFII Firefighter II Skills	25	2.72 %	96	3.69%	440.00	8.89 %
FI01 Fire Inspections	8	0.87 %	14	0.53%	29.75	0.60 %
FI02 Fire Instructor	1	0.10 %	2	0.07%	16.00	0.32 %
FI72 Sprinkler Systems	1	0.10 %	28	1.07%	35.00	0.70 %
FI73 Fire Extinguisher Training	2	0.21 %	4	0.15%	4.00	0.08 %
FP02 Specialized Equipment	5	0.54 %	36	1.38%	34.25	0.69 %
FS01 Fire Streams Theory	1	0.10 %	23	0.88%	23.00	0.46 %
FV01 Basic Fire Investigation	1	0.10 %	3	0.11%	19.50	0.39 %
FV02 Fire Safety Inspector Training	16	1.74 %	32	1.23%	133.00	2.68 %
FV03 LCAFI	3	0.32 %	3	0.11%	7.00	0.14 %
FV20 Vehicle Extrication	2	0.21 %	33	1.27%	81.00	1.63 %
FV30 Extrication	3	0.32 %	31	1.19%	32.50	0.65 %
FW01 Boat Operations	1	0.10 %	25	0.96%	75.00	1.51 %
FW02 Dive Training	11	1.19 %	53	2.04%	138.00	2.78 %
FW03 SCBA Training	5	0.54 %	33	1.27%	70.50	1.42 %
FW04 Search & Rescue	5	0.54 %	10	0.38%	11.00	0.22 %
FW05 Ladder Training	1	0.10 %	27	1.04%	52.00	1.05 %
FW07 Rope Rescue	1	0.10 %	3	0.11%	3.00	0.06 %
FW08 Hose Lays	3	0.32 %	6	0.23%	9.00	0.18 %
FW10 Hydrant Testing	1	0.10 %	2	0.07%	6.00	0.12 %
FW11 Aerial Operations	16	1.74 %	38	1.46%	60.00	1.21 %
FW12 Hydrant Training	2	0.21 %	4	0.15%	6.00	0.12 %
FW13 Water Shuttle	2	0.21 %	3	0.11%	7.00	0.14 %
FW14 Truck Maintenance	54	5.87 %	107	4.12%	181.00	3.65 %

WELLINGTON FIRE DISTRICT

TRAINING BY CATEGORY

Class Date Between {01/01/2007} And {12/31/2007}

Category	Classes	Pct of Classes	Attendees	Pct of Attendees	Hours	Pct of Hours
FW17 Ropes & Knots	5	0.54 %	10	0.38%	10.00	0.20 %
FW18 Safety Officer	3	0.32 %	10	0.38%	37.50	0.75 %
FW19 Thermal Imaging	1	0.10 %	25	0.96%	25.00	0.50 %
HAZMAT 1 Hazmat Awareness	1	0.10 %	1	0.03%	6.00	0.12 %
HZ00 HazMat Team/Advisory	2	0.21 %	2	0.07%	4.50	0.09 %
HZ02 Hazmat and Operations	2	0.21 %	2	0.07%	14.50	0.29 %
OFD Officer Leadership Development	4	0.43 %	5	0.19%	98.00	1.98 %
OFF O1 Officers Mtg/Training	8	0.87 %	46	1.77%	116.00	2.34 %
PREPLAN Company Inspection-Pre Plan	12	1.30 %	49	1.88%	48.50	0.98 %
PT Physical Training	1	0.10 %	2	0.07%	1.00	0.02 %
SPEC Special Duty	7	0.76 %	15	0.57%	36.00	0.72 %
SW1 Swiftwater Rescue 1	1	0.10 %	9	0.34%	216.00	4.36 %
Totals	919		2595		4,946.75	

WELLINGTON FIRE DISTRICT

TRAINING BY CATEGORY

Class Date Between {01/01/2007} And {12/31/2007}

Category	Classes	Pct of Classes	Attendees	Pct of Attendees	Hours	Pct of Hours
AD01 Administrative Procedures	2	0.21 %	3	0.11%	6.25	0.12 %
AD02 Fire Department Organization	18	1.95 %	42	1.61%	102.25	2.06 %
AD03 Public Education	26	2.82 %	73	2.81%	156.00	3.15 %
AD04 Station Maintenance	148	16.10 %	319	12.29%	469.50	9.49 %
AP01 Pumper Overhaul and Repair	2	0.21 %	4	0.15%	8.00	0.16 %
AP02 Hose Testing	17	1.84 %	40	1.54%	99.00	2.00 %
AP10 Apparatus Check Procedures	328	35.69 %	671	25.85%	1,135.50	22.95 %
APPUMP Apparatus Pump Training	36	3.91 %	74	2.85%	91.00	1.83 %
DT01 General Driver Training	49	5.33 %	111	4.27%	118.50	2.39 %
EL01 Electrical Safety	2	0.21 %	28	1.07%	31.00	0.62 %
EM01 Emergency Medical Services	3	0.32 %	32	1.23%	63.00	1.27 %
EM02 Orientation Of The EMT/Responder	1	0.10 %	27	1.04%	13.50	0.27 %
EM06 Respiratory System	1	0.10 %	28	1.07%	21.00	0.42 %
EM12 Hypothermia	1	0.10 %	25	0.96%	25.00	0.50 %
EM13 Specialized Equipment	2	0.21 %	53	2.04%	52.25	1.05 %
EM15 Burns	1	0.10 %	22	0.84%	22.00	0.44 %
EM16 Hyperthermia	1	0.10 %	26	1.00%	26.00	0.52 %
EM20 CPR Recertification	1	0.10 %	1	0.03%	2.00	0.04 %
EM52 Trauma	1	0.10 %	1	0.03%	8.00	0.16 %
EMT-B EMT Basic Training	1	0.10 %	4	0.15%	44.00	0.88 %
FA32 Fireworks Handling	2	0.21 %	4	0.15%	16.00	0.32 %
FC40 Strategic and Tactical Operations	50	5.44 %	206	7.93%	288.50	5.83 %
FC93 IS-400	3	0.32 %	3	0.11%	15.50	0.31 %
FF1A Firefighter 1A Class	6	0.65 %	6	0.23%	46.50	0.94 %
FFII Firefighter II Skills	25	2.72 %	96	3.69%	440.00	8.89 %
FI01 Fire Inspections	8	0.87 %	14	0.53%	29.75	0.60 %
FI02 Fire Instructor	1	0.10 %	2	0.07%	16.00	0.32 %
FI72 Sprinkler Systems	1	0.10 %	28	1.07%	35.00	0.70 %
FI73 Fire Extinguisher Training	2	0.21 %	4	0.15%	4.00	0.08 %
FP02 Specialized Equipment	5	0.54 %	36	1.38%	34.25	0.69 %
FS01 Fire Streams Theory	1	0.10 %	23	0.88%	23.00	0.46 %
FV01 Basic Fire Investigation	1	0.10 %	3	0.11%	19.50	0.39 %
FV02 Fire Safety Inspector Training	16	1.74 %	32	1.23%	133.00	2.68 %
FV03 LCAFI	3	0.32 %	3	0.11%	7.00	0.14 %
FV20 Vehicle Extrication	2	0.21 %	33	1.27%	81.00	1.63 %
FV30 Extrication	3	0.32 %	31	1.19%	32.50	0.65 %
FW01 Boat Operations	1	0.10 %	25	0.96%	75.00	1.51 %
FW02 Dive Training	11	1.19 %	53	2.04%	138.00	2.78 %
FW03 SCBA Training	5	0.54 %	33	1.27%	70.50	1.42 %
FW04 Search & Rescue	5	0.54 %	10	0.38%	11.00	0.22 %
FW05 Ladder Training	1	0.10 %	27	1.04%	52.00	1.05 %
FW07 Rope Rescue	1	0.10 %	3	0.11%	3.00	0.06 %
FW08 Hose Lays	3	0.32 %	6	0.23%	9.00	0.18 %
FW10 Hydrant Testing	1	0.10 %	2	0.07%	6.00	0.12 %
FW11 Aerial Operations	16	1.74 %	38	1.46%	60.00	1.21 %
FW12 Hydrant Training	2	0.21 %	4	0.15%	6.00	0.12 %
FW13 Water Shuttle	2	0.21 %	3	0.11%	7.00	0.14 %
FW14 Truck Maintenance	54	5.87 %	107	4.12%	181.00	3.65 %

WELLINGTON FIRE DISTRICT

TRAINING BY CATEGORY

Class Date Between {01/01/2007} And {12/31/2007}

Category	Classes	Pct of Classes	Attendees	Pct of Attendees	Hours	Pct of Hours
FW17 Ropes & Knots	5	0.54 %	10	0.38%	10.00	0.20 %
FW18 Safety Officer	3	0.32 %	10	0.38%	37.50	0.75 %
FW19 Thermal Imaging	1	0.10 %	25	0.96%	25.00	0.50 %
HAZMAT 1 Hazmat Awareness	1	0.10 %	1	0.03%	6.00	0.12 %
HZ00 HazMat Team/Advisory	2	0.21 %	2	0.07%	4.50	0.09 %
HZ02 Hazmat and Operations	2	0.21 %	2	0.07%	14.50	0.29 %
OFD Officer Leadership Development	4	0.43 %	5	0.19%	98.00	1.98 %
OFF O1 Officers Mtg/Training	8	0.87 %	46	1.77%	116.00	2.34 %
PREPLAN Company Inspection-Pre Plan	12	1.30 %	49	1.88%	48.50	0.98 %
PT Physical Training	1	0.10 %	2	0.07%	1.00	0.02 %
SPEC Special Duty	7	0.76 %	15	0.57%	36.00	0.72 %
SW1 Swiftwater Rescue 1	1	0.10 %	9	0.34%	216.00	4.36 %
Totals	919		2595		4,946.75	

WELLINGTON FIRE DISTRICT

TRAINING BY CATEGORY

Class Date Between {01/01/2007} And {12/31/2007}

Category	Classes	Pct of Classes	Attendees	Pct of Attendees	Hours	Pct of Hours
AD01 Administrative Procedures	2	0.21 %	3	0.11 %	6.25	0.12 %
AD02 Fire Department Organization	18	1.95 %	42	1.61 %	102.25	2.06 %
AD03 Public Education	26	2.82 %	73	2.81 %	156.00	3.15 %
AD04 Station Maintenance	148	16.10 %	319	12.29 %	469.50	9.49 %
AP01 Pumper Overhaul and Repair	2	0.21 %	4	0.15 %	8.00	0.16 %
AP02 Hose Testing	17	1.84 %	40	1.54 %	99.00	2.00 %
AP10 Apparatus Check Procedures	328	35.69 %	671	25.85 %	1,135.50	22.95 %
APPUMP Apparatus Pump Training	36	3.91 %	74	2.85 %	91.00	1.83 %
DT01 General Driver Training	49	5.33 %	111	4.27 %	118.50	2.39 %
EL01 Electrical Safety	2	0.21 %	28	1.07 %	31.00	0.62 %
EM01 Emergency Medical Services	3	0.32 %	32	1.23 %	63.00	1.27 %
EM02 Orientation Of The EMT/Responder	1	0.10 %	27	1.04 %	13.50	0.27 %
EM06 Respiratory System	1	0.10 %	28	1.07 %	21.00	0.42 %
EM12 Hypothermia	1	0.10 %	25	0.96 %	25.00	0.50 %
EM13 Specialized Equipment	2	0.21 %	53	2.04 %	52.25	1.05 %
EM15 Burns	1	0.10 %	22	0.84 %	22.00	0.44 %
EM16 Hyperthermia	1	0.10 %	26	1.00 %	26.00	0.52 %
EM20 CPR Recertification	1	0.10 %	1	0.03 %	2.00	0.04 %
EM52 Trauma	1	0.10 %	1	0.03 %	8.00	0.16 %
EMT-B EMT Basic Training	1	0.10 %	4	0.15 %	44.00	0.88 %
FA32 Fireworks Handling	2	0.21 %	4	0.15 %	16.00	0.32 %
FC40 Strategic and Tactical Operations	50	5.44 %	206	7.93 %	288.50	5.83 %
FC93 IS-400	3	0.32 %	3	0.11 %	15.50	0.31 %
FF1A Firefighter 1A Class	6	0.65 %	6	0.23 %	46.50	0.94 %
FFII Firefighter II Skills	25	2.72 %	96	3.69 %	440.00	8.89 %
FI01 Fire Inspections	8	0.87 %	14	0.53 %	29.75	0.60 %
FI02 Fire Instructor	1	0.10 %	2	0.07 %	16.00	0.32 %
FI72 Sprinkler Systems	1	0.10 %	28	1.07 %	35.00	0.70 %
FI73 Fire Extinguisher Training	2	0.21 %	4	0.15 %	4.00	0.08 %
FP02 Specialized Equipment	5	0.54 %	36	1.38 %	34.25	0.69 %
FS01 Fire Streams Theory	1	0.10 %	23	0.88 %	23.00	0.46 %
FV01 Basic Fire Investigation	1	0.10 %	3	0.11 %	19.50	0.39 %
FV02 Fire Safety Inspector Training	16	1.74 %	32	1.23 %	133.00	2.68 %
FV03 LCAFI	3	0.32 %	3	0.11 %	7.00	0.14 %
FV20 Vehicle Extrication	2	0.21 %	33	1.27 %	81.00	1.63 %
FV30 Extrication	3	0.32 %	31	1.19 %	32.50	0.65 %
FW01 Boat Operations	1	0.10 %	25	0.96 %	75.00	1.51 %
FW02 Dive Training	11	1.19 %	53	2.04 %	138.00	2.78 %
FW03 SCBA Training	5	0.54 %	33	1.27 %	70.50	1.42 %
FW04 Search & Rescue	5	0.54 %	10	0.38 %	11.00	0.22 %
FW05 Ladder Training	1	0.10 %	27	1.04 %	52.00	1.05 %
FW07 Rope Rescue	1	0.10 %	3	0.11 %	3.00	0.06 %
FW08 Hose Lays	3	0.32 %	6	0.23 %	9.00	0.18 %
FW10 Hydrant Testing	1	0.10 %	2	0.07 %	6.00	0.12 %
FW11 Aerial Operations	16	1.74 %	38	1.46 %	60.00	1.21 %
FW12 Hydrant Training	2	0.21 %	4	0.15 %	6.00	0.12 %
FW13 Water Shuttle	2	0.21 %	3	0.11 %	7.00	0.14 %
FW14 Truck Maintenance	54	5.87 %	107	4.12 %	181.00	3.65 %

WELLINGTON FIRE DISTRICT

TRAINING BY CATEGORY

Class Date Between {01/01/2007} And {12/31/2007}

Category	Classes	Pct of Classes	Attendees	Pct of Attendees	Hours	Pct of Hours
FW17 Ropes & Knots	5	0.54 %	10	0.38 %	10.00	0.20 %
FW18 Safety Officer	3	0.32 %	10	0.38 %	37.50	0.75 %
FW19 Thermal Imaging	1	0.10 %	25	0.96 %	25.00	0.50 %
HAZMAT 1 Hazmat Awareness	1	0.10 %	1	0.03 %	6.00	0.12 %
HZ00 HazMat Team/Advisory	2	0.21 %	2	0.07 %	4.50	0.09 %
HZ02 Hazmat and Operations	2	0.21 %	2	0.07 %	14.50	0.29 %
OFD Officer Leadership Development	4	0.43 %	5	0.19 %	98.00	1.98 %
OFF O1 Officers Mtg/Training	8	0.87 %	46	1.77 %	116.00	2.34 %
PREPLAN Company Inspection-Pre Plan	12	1.30 %	49	1.88 %	48.50	0.98 %
PT Physical Training	1	0.10 %	2	0.07 %	1.00	0.02 %
SPEC Special Duty	7	0.76 %	15	0.57 %	36.00	0.72 %
SW1 Swiftwater Rescue 1	1	0.10 %	9	0.34 %	216.00	4.36 %
Totals	919		2595		4,946.75	

