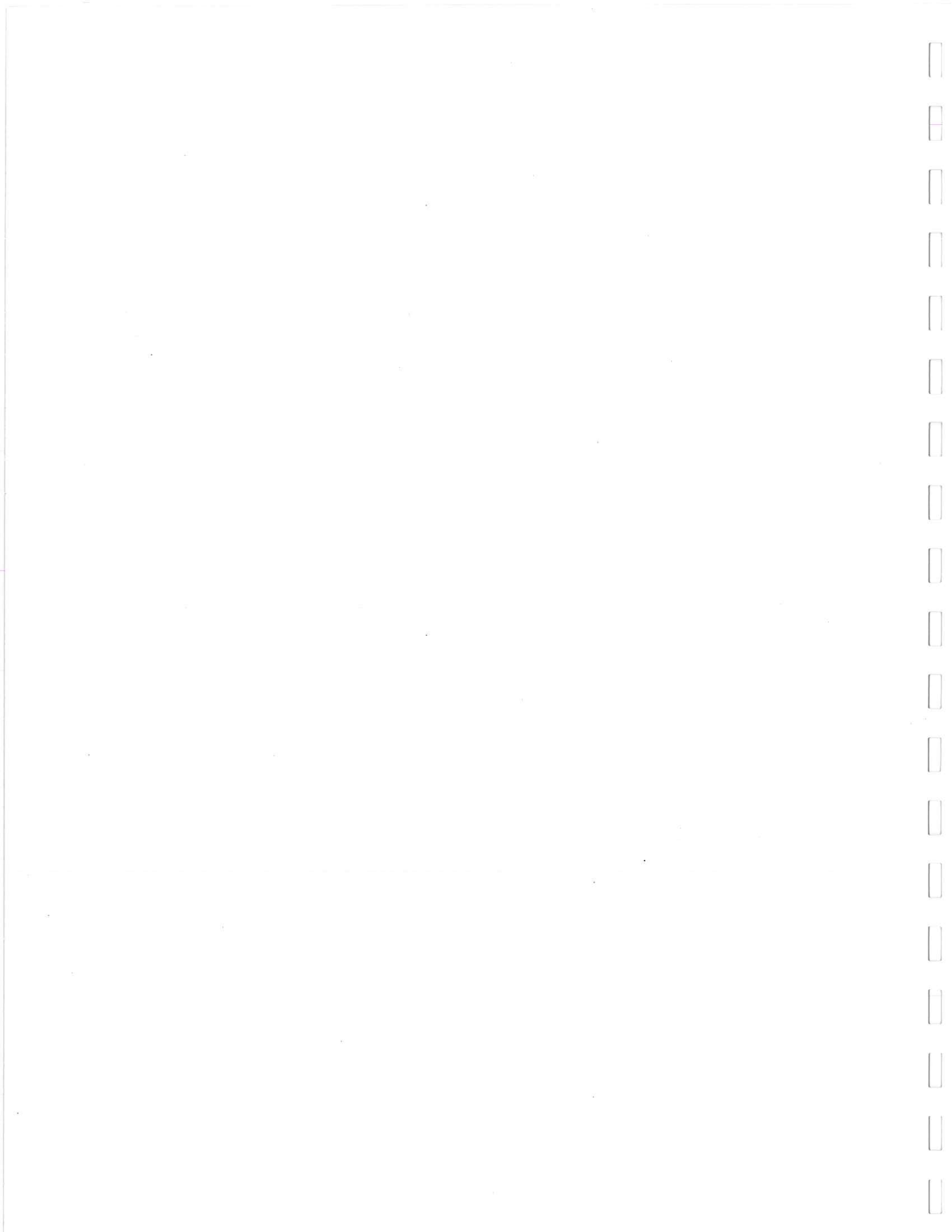




WELLINGTON COMMUNITY FIRE DISTRICT

2014 Annual Report





Mission Statement:

"Proudly serving since 1881, the Wellington Community Fire District protects the citizens and property of our six communities, by providing professional, courteous, and cost-effective fire prevention, protection, and emergency services."

Now one hundred and thirty-four years old, the Wellington Community Fire District has grown significantly since its meager beginnings in the latter half of the 19th century. The station is now manned a majority of each day, new training requirements emerge annually, and the volume of calls has increased dramatically. Yet it remains important to remember how and why the department was created. The following story was written by Terry Mazzone, who served on the department for seventeen years, while working locally for the Wellington Enterprise.

The First Fire Call

(From the July 30, 1981 Wellington Enterprise)

by Terry Mazzone



The newly organized Wellington Fire Department was behind the eight ball when it received its first call near midnight on Sunday, January 30, 1881, nine days after the Fire Department held its first organizational meeting.

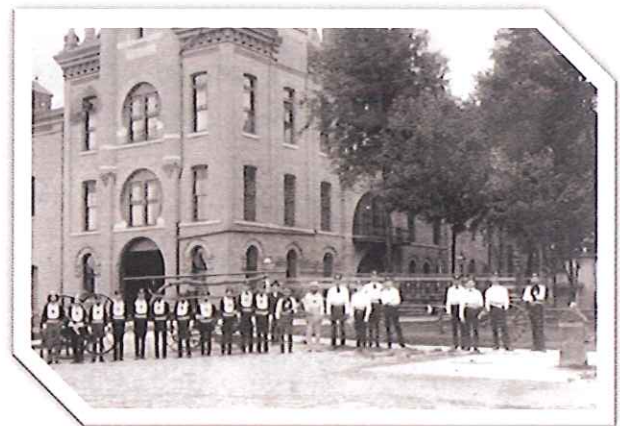
The first bell was ringing in the night air. The fire, which had started on the west side of the business district, was raging.

Where was the fire engine? It was on the second story of the Doland Carriage Shop. It didn't have any wheels on it and the brakes and tongue had been removed from the horse-drawn fire engine in order to get it into the elevator and to the second floor, where they planned to paint the name of "E.G.

Fuller" on the vehicle, in honor of the mayor.

Within 20 minutes after the bells started ringing, the firemen had replaced the wheels, tongue and brakes and the engine was ready for use.

The Fire Department's first blaze destroyed the A.H. Palmer Building, which housed the S.E. Peters grocery store and Mrs. Palmer's dressmaking shop, the Bunce Candy Stand and the Wooley Hardware store. The Post Office Building was nearly razed. All movable equipment was removed from the Wellington Enterprise's plant and stock was taken from Wight Jewelers.



Wellington Fire District 2014 Annual Report

Section I Personnel

Year in Review - *Chief Mike Wetherbee*

Wellington Fire District Board of Trustees – *Lt. Chad Regal*
Evolution of Our Fire Department & Joint Fire District

Wellington Fire District Personnel
Personnel Who Left in 2014

Personnel Milestones
Department Certifications
Past Firefighters of the Year Recipients

Roster History

Firefighter's Association Activities – *FF Derick Oswald*

2014 Firefighter of the Year

Section II Finance

Current Financial Status – Vanya Hales, Fiscal Officer

Building and Grounds Report – *Asst. Chief Troy Pitts*

Section III Fire Prevention

Fire Prevention Overview – *Asst. Chief Bill Brown*
Public Education Review

Fire Safety Inspections
Child Car Seat Safety
Juvenile Fire Setters Program

Section IV Incident Statistics

Incident Types

Incidents by District / Dollars Saved Versus Lost

Incident Alarm Times

Average Personnel Turnout

Calls by Day of the Week

Unit Response Summary

Train Delays

Response Time Analysis

Average Response Time by District / Structure Fires

Average Response Time by District / MVA's

Average Response Time by District / First Responder Calls

Annual Incident Summary Chart

Annual Incident Dollar Loss Chart

Mutual Aid Response Summary Chart

Incidents / Dollar Loss by Township

2014 Incident Summary Detail

Section V Training

Technical Rescue Training – *Lt. Greg Frenk*

Training and Activity Summary

Training Analysis by Staff Summary

Training by Category Summary

Training Analysis by Staff Detail

Personnel

Finance

Fire Prevention

Incident Statistics

Training

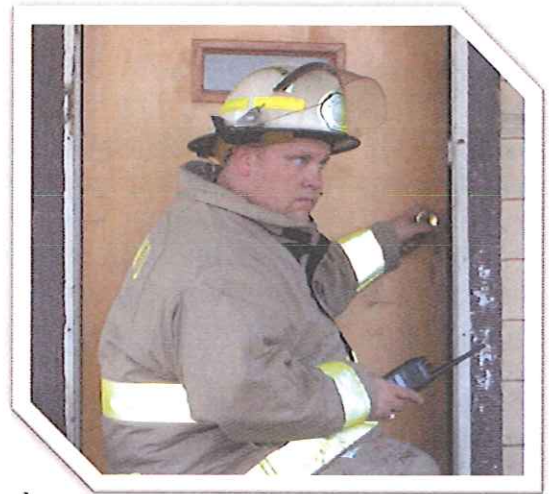
Section 7: Personnel

Wellington Community Fire District – 2014 Year in Review

By Chief Mike Wetherbee

Department Profile:

The Wellington Fire District provides emergency and non-emergency response services to the Village of Wellington and the townships of Wellington, Brighton, Huntington, Penfield, and Pittsfield. The district covers approximately 125 square miles and remains one of the largest such districts in the state of Ohio. Our governing body consists of a Trustee from each township served, as well as, a member of the Wellington Village Council. The 2014 board members included President Chris Stanfield of Brighton Township, Vice-President Jeff Hyde of Wellington Village, Trustee Mark Diedrick of Pittsfield, Trustee Lloyd Gordon of Penfield Township, Trustee Jim Barbor of Wellington Township replaced by Trustee Fred Pitts, Trustee Walter Rollin of Huntington Township and Fiscal Officer Vanya Hales.



The Wellington Fire Department was first formed in 1881. In 1970, Wellington Fire District, the first of its kind in the State of Ohio was formed after local and state politicians lobbied for legislation allowing the village and the five surrounding townships to form a joint fire district. It must also be added that former village solicitor Harrison Comstock played an instrumental role in the formation of this district.

Personnel:

Chief Mike Wetherbee, in his third year, worked with two Assistant Chiefs, Jim Clark and Bill Brown. Utilizing the services of three Lieutenants, Troy Pitts, Greg Frenk, and Chad Regal, the district was led by a command staff of these six officers. By late year 2014, the roster dropped to 29 members, as the Board of Trustees accepted three retirements. Firefighter Casey Moore, an 18 year veteran, along with Firefighter Frank Marley, a 25 year veteran left the department, as did Assistant Chief Jim Clark with 37 years of service. The District bid farewell to 80 years of experience, reducing the average years of experience of the members to 12.6. The roster at this time ranges in age from 22 to 68, with 40.5 being the average. With the retirement of Assistant Chief Clark, the district approved three promotions in the command staff. Assistant Chief Bill Brown moved to 1st AC, making room for Lieutenant Troy Pitts to be promoted to 2nd AC. Firefighter Ethan Little, a thirteen year veteran received a promotion to Lieutenant. One final promotion saw Firefighter/Paramedic Derick Oswald accept the position of Department Medical Officer, a newly created position that will focus on training and patient care by our personnel.

Funding Information:

The Wellington Fire District is funded through a 2.5 mil property tax levy which revolves on a 5 year cycle. The district is entering its fifth and final year of the cycle, with the next levy campaign occurring in May of 2015. The levy generates approximately \$696,000 annually, and is supplemented by grants that are actively sought by the District. An example of one of the grant sources is FEMA/AFG. While not a guaranteed source of revenue, the district has had past success in receiving these additional funds.

A short / medium / and long term capital spending plan was created in 2014 by Chief Wetherbee. The plan, spanning 17 years and three levy cycles to the year 2030, outlines necessary capital expenditures such as station improvements, and equipment and apparatus replacements.

Capital Improvements:

Repairs and improvements to the exterior brickwork and the deteriorating apparatus bay floors at station #2 were again considered, then tabled. Focus was placed on replacement of deteriorating components on our major pieces of apparatus. The district is also reaching expiration dates, which requires replacement, of various pieces of safety equipment. Expired Self-Contained Breathing Apparatus bottles were replaced according to schedule, as well as the purchase of new turnout gear for half of the roster. In 2015, as the district begins preparation for its next levy cycle, short, medium and long term plans will be discussed regarding the next replacement of apparatus and station renovations. As always, minor maintenance and upgrades to facilities and apparatus are constant.

Notable Incidents / Activities for 2014:

Chief Wetherbee traveled to Columbus in January to provide testimony to the House Transportation, Public Safety, and Homeland Security Committee in favor of Senate Bill 106. After close to a year on the House floor, the Bill was passed and renamed the Allan H. Anderson Jr. Bill. Governor Kasich signed the Bill into Law on December 19th with Chief Wetherbee, Al and Cathy Anderson, and Buz's nephew Norwich Firefighter Josh Riggs in attendance.

In the midst of a bitter January cold wave, the fire department responded to a basement fire at a foster Road residence. Despite near zero temperatures and brutal west winds at 30 mph, the blaze was brought under control in 45 minutes. The home suffered moderate damage, but was not a total loss.

Department water rescue personnel responded numerous times in 2014 to incidents both in the district as well as the county. Flooding caused by thawing ice and periods of heavy rain sent swiftwater personnel on rescues in Vermilion, Carlisle, North Ridgeville, and a few of our "usual" areas, while calls for assistance kept divers busy in Eaton Township, Avon, and Lorain.

On February 13, fire district officers were called to check a house that had been struck by a vehicle. The house, and vehicle both sustained heavy damage, however, there were no injuries. Ironically, the driver involved, had just crashed and totaled another car at SR 18 & West Road not even 24 hours prior to this incident.

February 20, a fire that started as a chimney fire caused extensive damage to one room of a Huntington Township home. Firefighters had the fire under control in 21 minutes.

On March 4, crews responded to a fully involved garage fire in Pittsfield Township. The building, two vehicles and a maple syrup making operation were a total loss. Firefighters were assisted by Oberlin, Camden, and Wakeman. Two exposures were protected on another particularly cold evening.

On April 22, crews responded to a reported MVA on SR 18 West of the Village. Upon our arrival, it was determined that a pedestrian was struck by a vehicle while changing his tire in the dark. The victim sustained serious injuries and was flown to MetroHealth in Cleveland.

Chief Wetherbee was invited to attend the American Petroleum Institute's Annual Conference in San Antonio in April to give a presentation regarding the January 2012 gasoline pipeline rupture. As a result, The Association of Oil Pipelines also requested a June presentation in Houston. The trips were recommended by Sunoco Logistics due to the efficient and effective response of our District and Village during their pipeline emergency.

May proved to be a busy month for firefighters. On May 2, crews responded to an accident at SR 18 & Quarry Rd. The accident involved two vehicles with six critical patients, one of which was ultimately a fatality. The scene, a mass-casualty incident required multiple ambulances, 4 lifeflight helicopters, and lengthy extrication. Fire crews did a fine job working and controlling an extremely chaotic scene. Also in May, an elderly gentleman fishing with his son suffered a massive heart attack and fell into the upground reservoir. Within 7 minutes of the call, firefighters Dumke and Knapp had located the victim and had him out of the water. The patient was revived, and flown to MetroHealth where he passed away early the next morning. In what was a rather odd call, firefighters responded to a call in Brighton involving a horse and buggy. The buggy's occupants apparently jumped from the vehicle after the horse had spooked and took off uncontrolled. The horse and buggy, minus the driver was apprehended a couple miles south on SR 511. As it turned out, the horse didn't have it's bridle and bit hooked up properly. The horse and all occupants were treated and released.

On May 27, the District was notified that their ISO Classification had been lowered to a 4/4Y from a 5/10. This new classification, basically a grading of the fire district and it's capabilities, will help lessen the amount of insurance many district residents pay. The re-classification was a result of an audit performed earlier in the year by ISO. (Insurance Services Organization)

District Firefighter Melissa Fuquay attracted local and state attention after competing in the Ohio Police and Fire Games this summer. Melissa competed in Raw Powerlifting, bringing home medals for overall best female lifter for all weight classes, and first place in the deadlift for her weight class, where she shattered the record by close to 40 lbs. Her deadlift of 240 lbs. caught the attention of WKYC in Cleveland who came out and aired a story on her accomplishments.

June brought two of the rather unusual calls of the year. On June 3, crews responded to Findley State Park at 4 in the morning to rescue a fisher man who had fallen back at the dam and was injured. The department's APV was used to extricate the patient to an area where he could be loaded on Lifeflight. On June 7, crews responded to Huntington Township to land a helicopter for a gentleman "struck in the head by a sword". As it turned out, the man was a contestant in the medieval games being held at the Ukranian Club. The injury wasn't quite as bad as one would imagine.

On July 14, crews responded to a structure fire on Forrest Street in the Village. The attic area of the house was full of smoke, and upon investigation it was found that a twelve year old and his 7 year old cousin were smoking and dropping the cigarette butts down into the wall. Tragedy was averted due to the fire never fully igniting. The juveniles were consulted by the department's Juvenile Fire Setter personnel.

On September 15, crews responded to a reported MVA on US 20. While enroute it was advised that a subject had lit himself on fire and stepped in front of a tractor trailer. Upon our arrival we found EMS tending to a male subject who had previously exited his vehicle and jumped in front of a tractor-trailer. He then got up, went back to his car and consumed gasoline, poured some over his body and lit himself on fire. It was later learned that the subject only suffered minor injuries, and that he had confessed to the murder of a woman in Cleveland just prior to the incident.

Spencer resident Shane Robinson and wife Brittney continued to accept recognition for their selfless actions on the evening of September 2, 2013. The Robinson's were honored by the State Fire Marshal in September at the Ohio Fire Academy, receiving the Civilian Hero's Award. In November, they were presented the prestigious Carnegie Medal of Heroism. The Medal is presented to individuals who risk their life to save another and was established by Industrialist-Philanthropist Andrew Carnegie.

On November 19, crews responded to a garage fire in Huntington Township. Crews made entry and extinguished the fire quickly. An investigation revealed that what appeared to be a garage was actually set up as an apartment. The fire, caused by an improperly installed wood burning stove caused minor fire damage but considerable smoke, heat and water damage.

On December 18, firefighters responded to a Brighton Township home to find a working room and contents fire. Crews were able to quickly knock the fire down and make entry to extinguish the fire and save the structure. Again, fire damage was limited to the living room, but the home sustained heavy heat, smoke and water damage. A 19 year old woman, was home sleeping at the time of the fire. She escaped and was transferred to the hospital for smoke inhalation.

Services Provided:

The Wellington Fire District, it's Board of Trustees, Officers, and Firefighters take pride in serving our community. The district provides response to any and all incidents within our jurisdiction, as well as, mutual aid to our surrounding communities. Incidents include the obvious fire calls, motor vehicle accidents, first responder calls, and odor complaints to name a few. The district also responds to calls such as animal rescues, any type of water incident, missing person searches, and weather related incidents. The district provides public and private fire prevention and education throughout the schools, daycares, area businesses and industries, and various groups such as Boy Scout and Girl Scout troops. In 2013 our firefighters continued fire public relations in other cities when their own fire departments refused. The district attends many functions and annual meetings, such as Kiwanis, Lorain Medina Rural Electric, Wellington Women's League, and the annual senior citizens luncheon, to present various lectures.

Wellington Fire District remains committed to conducting fire inspection and preplanning activities throughout the businesses and industries in our service area. These actions help lessen the risk of incidents, and prepare not only the occupants, but also the firefighters should an emergency arise. New construction, renovation and change of occupancy to existing buildings are also monitored to ensure safety, and adherence to the codes. "The Wellington Fire District is proud to serve and support the citizens of our communities."

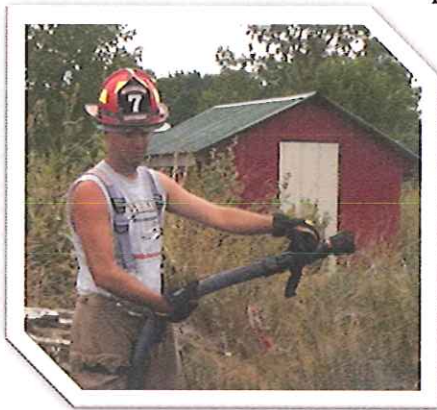
Mission Statement

"Proudly serving since 1881, the Wellington Community Fire District protects the citizens and property of our six communities, by providing professional, courteous, and cost effective fire prevention, protection, and emergency services."



Wellington Fire District Board of Trustees

By Lt. Chad Regal



The Wellington Fire Department has been protecting and serving the community since 1881. In the 134 year history there have been many individuals that have served on this department. Along with these individuals there is another small group of individuals that makes this department tick, the board of trustees. The board of trustees is comprised of six elected officials from the Village of Wellington and the townships of Brighton, Huntington, Penfield, Pittsfield and Wellington. Along with those individuals they are joined by a fiscal officer that keeps all the financial affairs in order. The board members that served the community in 2014 are as follows:

- Representing Brighton Township is Chris Stanfield. Chris represents approximately 915 residents. Chris has served on the Fire District board since 2006 and currently is serving his second term as the Board President.
- The representative for the Village of Wellington is Jeff Hyde. Jeff has served on the Fire Board since 2008 and is a Village Councilman, serving nearly 5,000 residents. Jeff serves as the Board Vice President.
- Wellington Township which has approximately 1,420 residents was represented by Jim Barbor in 2014. Following Barbor's resignation, Fred Pitts replaced Jim in 2014. We would like to thank him for his dedication and service to the Wellington Fire District.
- Walter Rollin represents Huntington Township. Walter has served on the Fire Board since 2006. Walter also serves as a Huntington township trustee as well. Huntington has nearly 1,300 residents in the township.
- Since the early 90's Mark Diedrick has served on the Fire Board. Mark is the Pittsfield Township representative and is also a trustee for Pittsfield Township. Pittsfield is comprised of nearly 1,500 residents.
- Lloyd Gordon represents Penfield Township a community of approximately 1,800 people. Lloyd is also a Penfield Township trustee. This was Lloyd's second year as a member of the Wellington Fire Board of Trustees.
- Since 2002 Vanya Hales has served as the Fire District's Fiscal Officer. Vanya keeps track of all the finances the Fire District incurs, along with keeping the minutes from the Fire Board meetings held the first Wednesday of each month.

Evolution of Our Volunteer Fire Department and Joint Fire District

Note: Mr. Comstock served the Wellington Fire District as its clerk for twenty-one years and was vital in the transition to a fire district.

By Harrison Comstock

For many years it was financially impossible for the village or for any single township surrounding us to have its own fire department even though it was manned by an all volunteer staff or dedicated people. The answer came early on that the Village of Wellington and the Townships of Brighton, Huntington, Penfield, Pittsfield, and Wellington would go together to provide this important service.

The vehicles were based in the village since it was the central point and the volunteers were employed by business and industry located here. The Village paid for the operations and the purchase of equipment initially but semi-annually would submit a bill to each of the other participants for their prorated share. This system worked for many years and was accepted by all residents. During this period the trucks and equipment were rather limited and a working pumper could be purchased for a reasonable price as it was a fairly simple apparatus. Hose and ladders were added to an existing truck body painted red and sent out for service.

Brighton Township:	Chris Stanfield (President)
Huntington Township:	Walter Rollin
Penfield Township:	Lloyd Gordon
Pittsfield Township:	Mark Diedrick
Wellington Township:	Jim Barbor/Fred Pitts
Wellington Village:	Jeff Hyde (Vice President)
Fiscal Officer:	Vanya Hales
Legal Council:	Kim R. Meyers

As time went on, however, the trucks became much more sophisticated, complicated and necessarily more expensive. The costs increased to such an extent that none of the participating bodies could afford them from their limited general funds.

It was then that our local chief, Bill Weber, and several others approached Congressman Don Pease who was at that time our representative to the Ohio General Assembly. Through all of their efforts a law was enacted to permit the formation of a Joint Fire District as a separate and distinct taxing authority with the tax base being that of all those who joined in.

Resolutions were adopted by all named governing bodies to form the Wellington Community Joint Fire District and I believe this was the first one formed in the State of Ohio. Each participating unit has a representative on the Board of Trustees of the Joint District and their duties and methods of operation were established by vote of that body in accordance with the new laws.

The District, however, had no money, no budget and little actual knowledge of what was to be expected of it. This was organized during the period of time when Federal Revenue Sharing was taking place and each body had some of these funds on hand to be used at their discretion. Each unit paid into the District \$1,000 from their Revenue Sharing money to provide some operating funds until such time as a formal budget could be adopted, and an annual budget prepared for the coming year. Once this latter was completed the Lorain County Auditor's office was contacted to determine what a proper levy amount would be required to provide the funds necessary. This levy question was then presented to all voters in all the member areas along with information on what the funds would be spent for in the next succeeding five year period.

One of the provisions of the new law regarding the proceeds of a levy raised in this manner allows the Board of Trustees to borrow a percentage of the revenue from that levy in anticipation of its receipt. As soon as the electorate gave its approval of the proposed levy a loan was obtained to provide the operating funds for the next succeeding period of time. This same procedure continues today with the presentation of a proposed levy each five years the District remains as a separate taxing body. At the same time these governments were demanding more and more of our local personnel they were reducing the services of the State Fire Marshal and others for local problems, inspections and investigations. It also required many more hours of required training for all the personnel of the department and as the result we now have two paid people to carry out the everyday operations while we still rely upon a dedicated staff of volunteers who devote many hundreds of hours to the work of the department and to their own skills improvement.

It takes a well organized and fully trained organization to do what these people do for us and I am sure we are all grateful for all they do and for the understanding employers of these persons who permit them to leave their employment when duty calls. The entire Wellington area can well be proud of the department it now has and of the service they provide, sometimes at the expense of missed suppers, kid's ball games and family picnics and otherwise quiet family times while they attend class to learn of new developments not only in fire fighting but in dealing with chemical spills and all the other situations declared to be emergencies.

Wellington Fire District Personnel / Year Hired

Chief	Mike Wetherbee, Full-time	1986	
Assistant Chief	Jim Clark	1977	
Assistant Chief	Bill Brown, Full-time	1991	
Lieutenant	Troy Pitts	1992	<i>"Firefighter of the Year" 2000</i>
Lieutenant	Greg Frenk	1996	<i>"Firefighter of the Year" 2009</i>
Lieutenant	Chad Regal	1998	
Firefighter	Gordy Lent	1980	<i>"Firefighter of the Year" 2002</i>
Firefighter	Scott Regal	1987	
Firefighter	Dave Crawford	1988	<i>"Firefighter of the Year" 2001, 2013</i>
Firefighter	Frank Marley	1988	<i>"Firefighter of the Year" 2008</i>
Firefighter	Casey Moore	1996	
Firefighter	John Clawson	1997	
Firefighter	Derick Oswald	1998	<i>"Firefighter of the Year" 2011</i>
Firefighter	Dan Shinsky	1998	
Firefighter	Bryan Hamer	1999	<i>"Firefighter of the Year" 2003</i>
Firefighter	Tim Polen	2001	<i>"Firefighter of the Year" 2007</i>
Firefighter	Ethan Little	2002	
Firefighter	Steve Higgins	2004	
Firefighter	Ed Thorn	2004	
Firefighter	Darin Lewis	2006	<i>"Firefighter of the Year" 2010</i>
Firefighter	Dave Roser	2009	
Firefighter	Rich Smith	2009	
Firefighter	Dusty Reynolds	2009	
Firefighter	Mike Barlow	2010	<i>"Firefighter of the Year 2012"</i>
Firefighter	Ken Knapp	2012	
Firefighter	Mike Standen	2012	
Firefighter	Tim Standen	2012	
Firefighter	Jason Dumke	2013	<i>"Firefighter of the Year" 2014</i>
Firefighter	Melissa Fuquay	2013	
Firefighter	Tyler Honoshofsky	2013	
Firefighter	Justen Tripp	2013	
Firefighter	Steve Garn	2013	

Personnel Who Left in 2014

Assistant Chief	Jim Clark
Firefighter	Frank Marley
Firefighter	Casey Moore

Personnel Milestones in 2014

Lieutenant	Troy Pitts	22 Years
Assistant Chief	Bill Brown	23 Years
Firefighter	Dave Crawford	26 Years
Firefighter	Frank Marley	25 Years
Firefighter	Scott Regal	27 Years
Chief	Mike Wetherbee	28 Years
Firefighter	Gordy Lent	34 Years
Assistant Chief	Jim Clark	37 Years

Departmental Certifications

Firefighter II Level	19
Firefighter I Level	9
Firefighter 1A Level	4
Fire Instructors	2
Fire Safety Inspectors	7
Advanced Arson Investigators	3
Haz Mat Technicians	8
E.M.T. - Paramedic	1
E.M.T. - Intermediate	1
E.M.T. - Basic	13
E.M.T. - First Responder	13

Firefighter of the Year

Troy Pitts	2000
Dave Crawford	2001
Gordy Lent	2002
Bryan Hamer	2003
Brian Slack	2004
Ben Sickels	2005, posthumously
Al "Buz" Anderson, Jr.	2006, posthumously
Tim Polen	2007
Frank Marley	2008
Greg Frenk	2009
Darin Lewis	2010
Derick Oswald	2011
Mike Barlow	2012
Dave Crawford	2013
Jason Dumke	2014

Personnel Roster History

Throughout the one-hundred and thirty-four year history of the Wellington Fire Department/District, many people have helped make this unit what it is today. The following is an attempt at recording our history through its members.

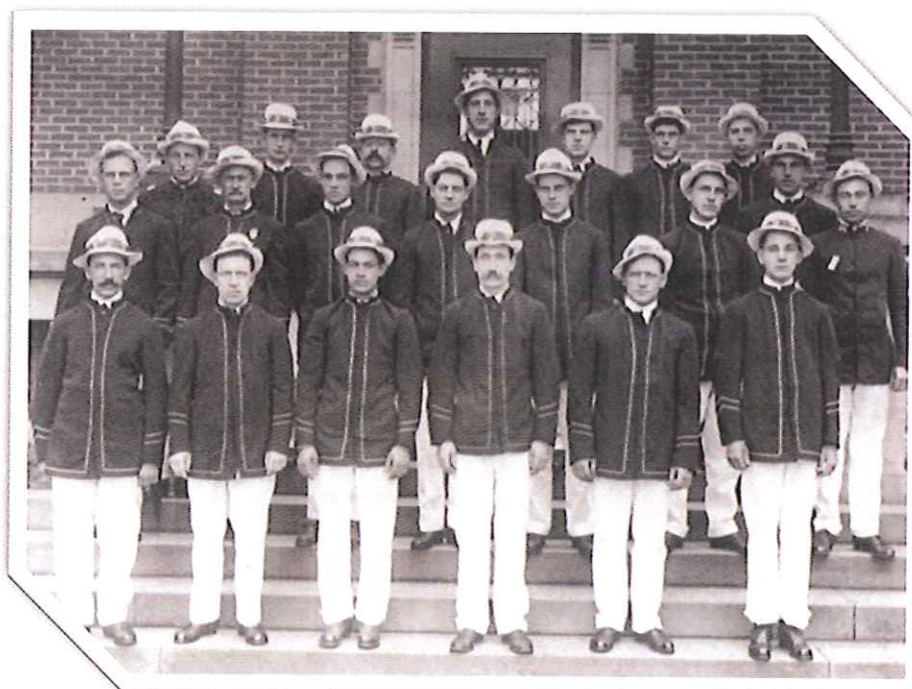
		Hire Date	Retire Date	Details	Passed Away	
Abbey,	Tyler	9/4/2013	11/06/2013	Firefighter		
Alspach,	Daniel N.	10/11/1967	03/17/1971	Firefighter	5/24/2009	
Alspach,	Fred	7/10/1991	10/23/1991	Firefighter		
Alspach,	Fred	01/01/2002	12/31/2007	Former Board Member from the Village of Wellington		
Althaus,	Warren	?1920?	?	Firefighter		
Anderson,	Ray	06/01/1965	12/01/1968	Firefighter		
Anderson, Jr.	Allan	2004	6/22/2006	Diver	6/22/2006	LODD
Anderson, Sr.	Allan	4/14/1982	1995	Firefighter		
Andrews,	Royal	?	?	Firefighter		
Arnold,	Albert Pat	01/01/1931	?	Chief from 1944-1948		
Babitt,	Lawry "John"	11/26/1969	01/01/1990	Asst. Chief from 6/1/1980 - 1/1/1990		
Baker,	Josh	9/2/1998	2/25/2002	Firefighter		
Barbor,	Jim	01/01/2014	04/02/2014	Former Board Member from Wellington Township		
Barbor,	Ralph E.	? 1970 ?	?	Former Board Member from Wellington Township	2005	
Barlow,	Mike	03/03/10	Active	Firefighter		
Barrick,	Charles	? 1920 ?	?	Firefighter		
Barzyk,	Richard	08/14/1974	08/01/1989	Firefighter		
Beal,	Hugh R.	1942	06/01/1966	Firefighter	2/1995	
Bidlake,	Lyle	06/08/1954	01/01/1986	Firefighter	2000	
Biggs,	Jim	09/01/1964	07/31/1974	Firefighter		
Bishop,	Jason	4/3/2002	9/27/2005	Firefighter		
Black,	S.F.	?	?	Chief from 1886-1888		
Boggs,	Jeremy	8/3/2005	10/31/2008	Firefighter		
Bradley,	Raymond Clyde	?	?	Former Board Member from Pittsfield Township	7/31/1994	
Brasee,	Christopher	5/5/1999	11/11/2009	Firefighter		
Brasee,	John	?	?	Former Board Member from Pittsfield Township		
Brasee,	Leroy	?	?	Former Board Member from Wellington Township		
Breneman,	Barry	11/1/2000	9/6/2002	Firefighter		
Brouse,	Kenny P.	? 1923 ?	?	Firefighter		
Brouse,	Kenny R.	1925	12/13/1969	Firefighter; Assistant Chief		
Brouse,	Kenny R.	10/26/1977	2/16/1988	Dispatcher	2/16/1988	
Brown,	William H.	8/14/1991	Active	Firefighter; First Full-time Firefighter hired; Lieutenant from 2/6/2001 to 1/4/2012; Former Association Vice President; Promoted to 2 nd Assistant Chief 1/4/2012; Promoted to 1 st Assistant Chief 1/1/2015		
Brown,	William	? 1915 ?	?	Firefighter		
Buck,	Russ	? 1935 ?	06/01/1955	Firefighter		
Burge,	John A.	? 1970 ?	?	Former Board Member from Brighton Township	1992	
Burge,	Marlin	? 1970 ?	?	Former Board Member from Wellington Township		
Butler,	Randy	8/3/2005	1/11/2008	Firefighter		
Carlyle,	Bill			Chief from 1897-1901		
Carlyle,	Bill	10/27/1955	05/24/1961	Firefighter		
Case,	Robert E.	?	?	Former Board Member from Brighton Township	1997	
Chappell,	Wes	7/1/2009	11/2/2011	Firefighter		
Clara,	Frank	01/10/1923	?	Chief from 1948-1956	1972	
Clark,	Earl	? 1923 ?	?	Firefighter		
Clark,	James	10/12/1977	12/31/2014	Lieutenant 5/5/1999 - 7/6/2005; Captain 7/6/2005 to 11/30/2011; Promoted to 1 st Assistant Chief 12/1/2011		
Clawson,	John	10/10/1997	Active	Firefighter: Former Association President		
Clodwick,	Henry	? 1923 ?	?	Firefighter	10/17/1950	
Clodwick,	Jay	?	?	Firefighter		
Coates,	Lynne K.	?	?	Chief from 1929-1943	1972	
Comstock,	Harrison	1970	12/31/1991	Clerk	11/18/2011	
Conklin,	Richard	2002	2005	Former Board Member from Brighton Township		
Conrad,	Richard	1/1/1992	12/31/2012	Former Board Member from Penfield Township		
Cowards,	Fred	?	?	Firefighter		
Craner,	Frank	? 1915 ?	?	Firefighter		
Crawford,	David	7/13/1988	Active	Firefighter		
Cross,	Rod	4/14/1982	11/14/1984	Firefighter		
Cypher,	Jeff	1/23/1986	5/31/1988	Firefighter		
Davis,	Lyman	08/08/1945	09/24/1952	Firefighter		

Dickason,	R.	?	?	Firefighter		
Diedrick,	Mark	?	?	Current Board Member from Pittsfield Township		
Dinham,	Foster	? 1923 ?	?	Firefighter		
Dirlam,	F.	? 1923 ?	?	Firefighter		
Dumke,	Art	01/23/1952	02/12/1958	Firefighter	5/30/2011	
Dumke,	Jason	9/4/2013	Active	Firefighter		
Edwards,	Fred	? 1908 ?	? 1920 ?	Chief from 1908-1921	1945	
Edwards,	Lethal (Lum)	2/12/1964	12/08/1971	Firefighter; Former Board Member from the Village	9/4/1998	
Edwards,	William	?	?	Firefighter		
Ensign,	Tom	02/25/1970	1984	Firefighter	1999	
Evans,	Howard E.	01/01/1931	?	Firefighter	1967	
Fahler,	Daniel	05/04/1980	08/25/1982	Firefighter		
Fannin,	Whitey	01/23/1952	04/01/1952	Firefighter		
Farnsworth,	Bob	09/12/1956	03/01/1964	Firefighter		
Farnsworth,	Ed	08/09/1950	09/14/1955	Firefighter		
Farnsworth,	Ken	10/1/1987	8/1/2012	Diver		
Farr,	Joann	01/01/1992	4/1997	Clerk		
Feron,	Jack	01/09/1952	06/24/1963	Firefighter		
Feron,	Jim	1952	02/23/1955	Firefighter		
Fishbaugh,	Gerald	10/4/1995	9/10/1997	Firefighter		
Fisher,	David	3/13/1991	3/31/2011	Firefighter		
Fisher,	Warren A.	? 1922 ?	? 1923 ?	Chief from 1890-1905	1924	
Fisher,	William	? 1923 ?	?	Firefighter		
Fleckenstein,	Jack	04/01/1952	04/20/1953	Firefighter		
Ford,	Perl	? 1915 ?	?	Firefighter		
Foster,	George	1942	02/10/1975	Asst. Chief 12/13/1969 to 2-10-1975; Secretary	2/10/1975	LODD
Frenk,	Greg	5/22/1996	Active	Firefighter; Promoted to Lieutenant 1/4/2012		
Friend,	Charles F.	01/01/1931	?	Firefighter	1959	
Friend,	Clarence G.	? 1920 ?	?	Firefighter		
Friend,	John F.	03/25/1931	?	Firefighter	1946	
Friend,	Walter	?	?	Firefighter	1946	
Fulks,	Ray	? 1920 ?	08/1930	Firefighter		
Fuquay,	Melissa	9/4/2013	Active	Firefighter; WFD's first female firefighter		
Gardinier,	Paul	1/2/2003	3/9/2004	Firefighter		
Gardner,	George	5/9/1984	5/17/2012	Firefighter		
Gardner,	Ken	5/10/1989	5/15/1995	Firefighter		
Gariss,	Walter	?	?	Firefighter		
Garn,	Steve	9/4/2013	Active	Firefighter		
Garner,	Jim	1/1981	?	Firefighter		
Garner,	William	07/13/1966	1967	Firefighter		
Garris,	Kenneth W.	01/23/1952	12/31/1957	Firefighter	2/9/2003	
Gay,	Bert	? 1915 ?	?	Firefighter		
Gibbins,	Martin N.	?	7/25/1945	Firefighter	1975	
Gill,	Tom	03/13/1968	09/20/1968	Firefighter		
Gillette,	Harry D.	? 1923 ?	?	Firefighter		
Gordon,	Lloyd	1/1/2013	Active	Current Board Member from Penfield Township		
Gott,	Claude D.	? 1915 ?	?	Firefighter	1950	
Gray,	Garry	7/10/1991	10/10/1997	Firefighter		
Gray,	Jerry	1/22/1986	?	Firefighter		
Gray,	Tom	05/24/1972	7/31/1974	Firefighter		
Grissinger,	Lee	10/26/1960	6/1/1992	Firefighter; Former Department Secretary		
Guiher,	Norm	10/23/1974	12/01/1979	Firefighter		
Hackenbaugh,	George	?	?	Chief from 1893-1894		
Haldeman,	Dan	1/1/1992	?	Former Board Member from the Village		
Hales,	Vanya	4/1/2002	Active	Fiscal Officer		
Hamer,	Bryan	5/5/1999	Active	Firefighter; Former Association Secretary; Current Association President		
Hanny	John	? 1922 ?	?	Firefighter		
Hartman,	Russ	?	?	Firefighter		
Hayes,	Bob	9/2/1998	11/30/1999	Firefighter		
Haynes,	Virginia	?	?	Former Board Member from Wellington Township		
Heyde,	Ken	01/01/2002	12/31/2005	Former Board Member from Huntington Township		
Higgins,	Steve	7/7/2004	Active	Firefighter		
Highland,	William	?	?	Firefighter		
Hildebrand,	William H.	? 1915 ?	?	Chief from 1922-1928	1937	
Hinkle,	Thadd	7/7/2004	4/21/2011	Firefighter		
Honoshofsky,	Tyler	9/4/2013	Active	Firefighter		
Honoshofsky,Jr	John	9/14/1988	8/14/2000	Firefighter		
Honoshofsky,Sr	John	06/28/1972	9/4/1985	Firefighter; Asst. Chief from 1/1981 - 9/4/1985		
Hord,	D.	?	?	Firefighter		
Hulbert,	Chuck	1/13/1988	12/1/1995	Firefighter		

Hyde,	Jeff	1/1/2008	Active	Current Board Member from the Village		
Jackson,	Laurence A.	?	?	Former Board Member from Penfield Township	12/31/1999	
Jacobs,	Glen E.	?1920?	?	Firefighter		
Jameyson,	Lyle G.	? 1970 ?	?	Former Board Member from Wellington Township	5/3/2010	
Jenkins,	Charles	04/08/1964	1969	Firefighter		
Jerousek,	Jim	04/14/1971	7/1/1991	Firefighter; Lieutenant from 6/22/1988 - 7/1/1990; Captain from 7/1/1990 - 7/1/1991		
Johnson,	Charles	?	?	Firefighter		
Johnson,	Craig	10/4/2006	11/22/2010	Firefighter		
Johnson,	Paul	? 1951 ?	07/01/1956	Firefighter		
Jordan,	Lawrence	10/26/1960	07/01/1961	Firefighter		
Klaholz,	H.	06/24/1953	09/01/1955	Firefighter		
Knapp,	Bill	04/09/1969	7/23/1975	Firefighter		
Knapp,	David	8/12/1992	2/1/2005	Firefighter		
Knapp,	Ken	10/1/2012	Active	Firefighter		
Knapp, Sr.	Orrville L.	?	?	Firefighter	2/10/1975	
Kolbe,	J.	?	?	Firefighter		
Kolbe,	Myron E.	?	?	Former Board Member from Penfield Township	10/31/1976	
Kotowski,	Ted	3/11/1992	6/1/1994	Firefighter		
Ledgard,	Sam	? 1915 ?	?	Firefighter		
Ledgett,	Samuel	? 1920 ?	?	Firefighter	12/21/1925	
Lent,	Daniel	05/26/1976	1/1/2001	Firefighter; Lieutenant from 2/7/1990 - 8/6/1991; Captain from 8/6/1991 - 1/1/2001		
Lent,	David	08/14/1974	03/03/1999	Firefighter; Lieutenant from 7/25/1990 - 3/3/1999		
Lent,	Gordon	5/4/1980	Active	Firefighter; Former Association President (first)		
Lewis,	Bob	6/27/1945	?	Firefighter		
Lewis,	Darin	4/5/2006	Active	Firefighter		
Linder,	Bill	?1920?	?	Firefighter		
Little,	Ethan	4/3/2002	Active	Firefighter; Current Association Vice President; HazMat Officer; Promoted to Lieutenant 1/1/2015		
Lowther,	Jay	06/01/1985	04/14/1999	Firefighter		
Mackin,	Clyde V.	01/23/1952	?	Firefighter	1960	
Manning,	Robert V.	04/01/1952	6/1/1980	Firefighter; Asst. Chief from 12/6/1972 - 6/1/1980	10/07/04	
Markel,	Scott	8/10/1988	5/22/2000	Firefighter		
Marley,	Charles	10/11/1968	10/08/1976	Firefighter		
Marley,	Frank	8/10/1988	04/02/2014	Firefighter; Former Association Secretary		
Marley,	Tony	9/12/1956	6/30/1990	Firefighter; Asst. Chief from 4/2/1975 - 12/6/1978; Chief from 12/6/1978 - 6/30/1990		
Martin,	?	? 1915 ?	?	Firefighter		
Mazzone,	Terry	12/1/1980	11/1/1997	Firefighter; Department Treasurer		
McAvena,	Dale	1/1/2010	12/31/2013	Former Board Member from Wellington Township		
McCaffrey,	C.H.	? 1923 ?	?	Firefighter		
McCaffrey,	C.P.	?	?	Firefighter		
McClellan,	Arthur C.	02/27/1929	? 1931 ?	Firefighter	1975	
McEndree,	Eldon G.	?	11/12/1952	Firefighter	1972	
McGuire,	Mark	2/1/1990	4/7/1999	Firefighter		
McKenzie,	Bill	01/23/1952	01/22/1964	Firefighter		
McKinley,	Ken	4/4/2001	10/10/2001	Firefighter		
McKinney,	Rex	?1920?	?	Firefighter		
McKisson,	Don A.	? 1923 ?	6/27/1945	Firefighter	1966	
McKisson,	Richard C.	? 1929 ?	?	Firefighter	1973	
McQuaid,	Terry	03/13/1968	6/2/1976	Firefighter		
McQuate,	Robert	05/09/1956	3/1/1982	Firefighter	2001	
McQuate,	Robert	10/24/1951	02/13/1952	Firefighter		
Moehl,	Henry	? 1929 ?	?	Firefighter		
Mohrman,	Claude	01/01/1931	6/13/1945	Firefighter		
Moore,	Casey	6/26/1996	9/1/2014	Firefighter		
Moore,	Floyd	1939	?	Firefighter		
Moore,	Floyd	1971	?	Firefighter		
Moore,	Floyd	02/10/1988	06/07/1997	Dispatcher	6/17/2012	
Moore,	Ray	? 1951 ?	? 05/1964?	Firefighter		
Moore,	Roger	05/14/1969	05/15/2005	Firefighter; Lieutenant from 10/1985 - 1/1990; Captain from 1/24/1990 - 7/1/1990; Asst. Chief from 7/1/1990 - 5/15/2005		
Morgan,	?	? 1915 ?	?	Firefighter		
Myers,	Gordon	? 1922 ?	?	Firefighter		
Newberger,	Eugene R.	5/14/1930	?	Firefighter	1966	
Olsen,	Floyd	1946	01/01/1986	Firefighter	9/17/2007	
Oswald,	Derick	9/2/1998	Active	Firefighter; Former Association V.P.; Current Association Treasurer; Promoted to Medical Officer 1/1/2015		
Paige,	Dwight	? 1915 ?	?	Firefighter		
Paul,	Roy	?1920?	7/26/1924	Firefighter	7/26/1924	LODD
Peabody,	Vaughn	1922	1922	Firefighter		

Peer,	Mel	?	?	Firefighter		
Perkins,	Kenneth	10/14/1953	12/1/1967	Firefighter	10/1998	
Perry,	Jack	09/12/1956	06/01/1980	Firefighter	12/30/2012	
Perry,	Jim	11/14/1951	12/31/1984	Firefighter		
Pickworth,	Robert	?	?	Former Board Member from Pittsfield Township		
Pitts,	Fred O.	3/12/1980	7/9/1980	Firefighter		
Pitts,	Fred O.	04/02/2014	Active	Current Board Member from Wellington Township		
Pitts,	Troy	2/12/1992	Active	Firefighter; Lieutenant from 3/6/2002 to Present; Former Association Vice President; Promoted to 2 nd Assistant Chief 1/1/2015		
Polen,	Tim	9/5/2001	Active	Firefighter		
Pugh,	M.R.	01/01/1960	09/01/1960	Firefighter		
Randolph,	Gary	10/10/1990	4/21/1991	Firefighter		
Ray,	Bill	?	?	Firefighter		
Ray,	Charles	? 1929 ?	?	Firefighter		
Ray,	Harvey	? 1920 ?	?	Firefighter		
Ray,	Sol	? 1915 ?	10/24/1951	Firefighter; Honorary Member for Life		
Regal,	Chad	2/12/1998	Active	Firefighter; Current Association Secretary; Promoted to Lieutenant 1/4/2012		
Regal,	Scott	7/22/1987	Active	Firefighter; Former Association Treasurer		
Reider,	William	?	?	Firefighter		
Reynolds,	Dusty	7/1/2009	Active	Firefighter		
Reynolds,	Miles	? 1915 ?	?	Firefighter		
Rice,	Kosco C.	? 1920 ?	?	Firefighter		
Rickett,	H.W.	?	?	Firefighter		
Rider	G.W.	?	?	Chief from 1889 - 1890		
Roby,	Delmer B.	04/01/1952	07/01/1955	Firefighter	1972	
Rolfe,	George R.	01/10/1923	?	Firefighter	1958	
Rollin,	Burt	?	12/31/2001	Former Board Member from Huntington Township		
Rollin,	Walter	1/1/2006	Active	Current Board Member from Huntington Township		
Rollins,	Steve	4/14/1982	10/10/1985	Firefighter		
Ropchock,	Thomas	1/1/1982	11/7/2001	Firefighter; Lieutenant from 1/24/1990 - 3/2001; Captain 3/2001 - 11/2001	11/7/2001	
Rosemark,	Mark	11/08/1978	12/01/1979	Firefighter		
Rosemark,	Mark	2/13/1985	2/9/2004	Firefighter; Haz Mat Officer		
Rosemark,	Mark	11/3/2004	12/31/2006	Firefighter		
Roser,	Dave	7/1/2009	Active	Firefighter		
Rutherford,	Dennis	10/27/1995	8/3/1998	Firefighter		
Sage,	Fred Leon	? 1915 ?	?	Firefighter	1/28/1951	
Sage,	Russell	? 1920 ?	?	Firefighter		
Savoy,	Fred	12/01/1953	11/01/1953	Firefighter		
Scott,	Charles M.	?	?	Firefighter	8/6/1943	
Settemire,	Martin	01/11/1955	08/01/1956	Firefighter		
Shelton,	Jeff	1/2/2003	1/13/2006	Firefighter		
Shepard,	Charles	?	?	Firefighter		
Shepard,	Clayton L.	? 1915 ?	?	Firefighter	1963	
Shinsky,	Dan	11/4/1998	Active	Firefighter		
Sickels,	Ben	05/26/1976	8/2/2005	Firefighter; Former Department Secretary/Treasurer; Dispatcher	8/2/2005	
Slack,	Brian	1/12/2000	6/24/2013	Firefighter; Lieutenant from 8/1/2005 to 6/24/2013		
Smith,	Richard	7/1/2009	Active	Firefighter		
Snodgrass,	William	06/08/1954	03/01/1956	Firefighter		
Spicer,	Rolla T.	?	?	Chief from 1891 - 1892 and 1895 - 1896	1923	
Standen,	Mike	10/1/1012	Active	Firefighter		
Standen,	Tim	10/1/2012	Active	Firefighter		
Stanfield,	Chris	1/1/2006	Active	Current Board Member from Brighton Township		
Stanic,	Daniel	10/27/1995	5/1/1996	Firefighter		
Starr,	W.B.	?	?	Chief from 1882 - 1883		
Stemple,	Sidney	?	?	Firefighter	1992	
Storrow,	Tom	1/23/1985	8/12/1987	Firefighter		
Sumpter,	Harold	?	?	Former Board Member from the Village		
Sumpter,	Jack	5/4/1980	8/1/1995	Lieutenant from ?? - 8/1/1995		
Sumpter,	Jack	12/2/1998	8/14/2000	Firefighter		
Tegtmeyer,	Fred	9/1/1993	8/14/2000	Diver		
Thorn,	Ed	7/7/2004	Active	Firefighter		
Thornton,	Ralph	?	?	Firefighter		
Tripp,	Justin	9/4/2013	Active	Firefighter		
Trommer,	Russell	10/14/1953	03/13/1954	Firefighter		
Twining,	Dan	7/7/2004	2/6/2008	Firefighter		
Twining,	Ronald	1970	?	Former and ORIGINAL Board Member from Huntington Township		
Urbansky,	Andrew P.	?	12/31/2005	Former Board Member from Brighton Township	2//22/2007	
Varner,	William	9/7/2005	9/4/2013	Firefighter/Dispatcher		

Waite,	Tonya	4/1997	12/31/2002	Former Wellington Community Fire District Clerk		
Walker,	Gary	10/23/1974	07/05/1980	Firefighter		
Walker,	Robert J.	02/14/1973	1/6/2012	Firefighter; Lieutenant from 1/7/1981 – 10/1985; Asst. Chief from 10/1985 – 7/1/1990; Chief from 7/1/1990 to 11/30/2011; Named Chief Emeritus 12/1/2011; First Full-time Fire Chief hired		
Walker,	Robert O.	03/26/1958	12/01/1967	Firefighter		
Ward,	Marion	?	?	Firefighter		
Warren,	Ralph M.	1/14/1948	?	Firefighter	1999	
Watters, Jr.	Bill	11/4/1998	2/15/2008	Firefighter		
Watters, Jr.	Bill	11/5/2008	6/1/2009	Firefighter		
Weber,	Mark	8/9/1950	7/1/1991	Firefighter	7/1998	
Weber,	Robert A.	02/27/1946	01/01/1981	Firefighter	11/11/2004	
Weber,	William	9/1939	12/06/1978	Firefighter; Chief from 07/11/1956 – 12/6/1978	8/8/2001	
West,	Charles	08/14/1963	06/01/1988	Firefighter; Lieutenant from 6/1/1980 – 6/1/1988		
West,	Rolland S.	1939	12/01/1972	Firefighter; Asst. Chief 1958-1972	11/21/1994	
Wetherbee,	Mike	10/8/1986	Active	Firefighter; Lieutenant from 11/1/1995 – 2/6/2002; Captain 2/6/2002 – 7/6/2005; Asst. Chief from 7/6/2005 to 11/30/2011; Promoted to Chief 12/1/2011		
Whitesides,	Harold	? 1920 ?		Firefighter		
Wilcox,	Oron	? 1915 ?	?	Firefighter		
Wiles,	Harold (Stub)	1949	12/31/1984	Firefighter	12/2/2007	
Willbond,	Matt	8/14/1991	10/10/1995	Firefighter		
Williams,	Salonais A.	?	?	Chief from 1884 – 1885	9/3/1932	
Wilzack,	Chet	03/26/1958	12/31/1959	Firefighter	2001	
Wolf,	Bill	6/7/2000	5/2/2008	Firefighter		
Woods,	Calvin	01/01/2002	12/31/2009	Former Board Member from Wellington Township		
Wrench,	William Earnest	?	?	Firefighter	1/6/1997	
Wrench,	Ernest E.	09/24/1930	6/13/1945	Firefighter	1/13/1961	
Wynn,	Carl	? 1922 ?	?	Firefighter		
Yahnke,	Charles	03/13/1954	02/23/1972	Firefighter	1995	
Yates,	Scott	8/14/1991	6/26/1996	Firefighter		
Younglas,	Thomas	1/1/1975	12/31/1991	Former Board Member from Penfield Township		
Zeigler,	Mark	?	?	Former Board Member from Brighton Township		
Zimmerman,	Glenn	06/28/1948	03/01/1963	Firefighter		



Wellington Firefighters Association's Year in Review 2014

By Firefighter Derick Oswald, Association Treasurer

The Wellington Firefighter's Association is a 501-C3, non-profit organization, formed in 2006. The group raises money for local charities, purchase of fire prevention supplies, as well as firefighting and dive equipment. In fiscal year 2014, the Association focused on replacing and acquiring dive team equipment.

The Firefighter's Association normally holds one major fund raiser each year. The past six years, a "Night at the Races" has been held at the Lorain County Fairgrounds. The following documents many of the activities of the Firefighter's Association in 2014.



- 2014 Night at the Races earnings for the Association was \$13,477

The following are some of the purchases and donations that the association was responsible for in 2014:

- Wellington Fire Department Fire Prevention purchases:
 - \$1,843.00 for fire prevention materials
- Fire Prevention Week Poster Winners
 - \$407 to purchase t-shirts for each of the winning posters
- Scholarships
 - Al "Buz" Anderson \$1000 scholarship awarded to Wellington High School Senior Shelby Cole.
- Wellington Firefighters Chili Cook-Off Team
 - Team participated in the K96 Firefighters chili cook off in Sandusky
 - Team has won numerous other awards for their chili
 - \$2,070.50 donated to Well-Help, Inc.
- Relay for Life Sponsorship
 - \$1000 donation
- Miscellaneous Donations
 - Donation towards the Wellington Community Auditorium
 - Elyria Township FD memorial brick, \$50
 - Drew Guyer Foundation, \$100
 - Purchased trophies for Lorain County Fair, \$111
 - Wellington Eagle Riders, \$100
 - Ruggles-Troy FD donation, \$100
 - Adopted a family for Christmas (Well-Help, Inc.), \$343
 - Keiser sled construction, \$283
 - Dive team equipment, \$1,936
 - Autism Speaks donation, \$100

- Smoke detectors, in conjunction with Wellington Women's League, \$2,112
- Landry Cole donation, from annual family Christmas party, \$1,000
- 6th Annual Firefighter Chili Cook-off
 - In November, the Firefighter's Association continued the challenge of sponsoring a chili cook-off, with the help from area departments and local chefs. The benefactor of the evening was Well-Help, Inc. Held at the Wellington Eagles club, the evening was filled with plenty of chili, giveaways, live music and camaraderie.
 - When the evening was completed, the Firefighter's Association gave Well-Help, Inc. a check for \$1,440. While the majority of the Association was involved in some aspect, the evening was a huge success. Several hundred people visited throughout the evening, sampling chili and supporting a great cause.

2014 Wellington Firefighter's Association Charitable Donations: \$6,281.50

Since 2010, Charitable Donations: \$43,259



Thomas R. Ropchock Award

Recognizing the Wellington Firefighter of the Year

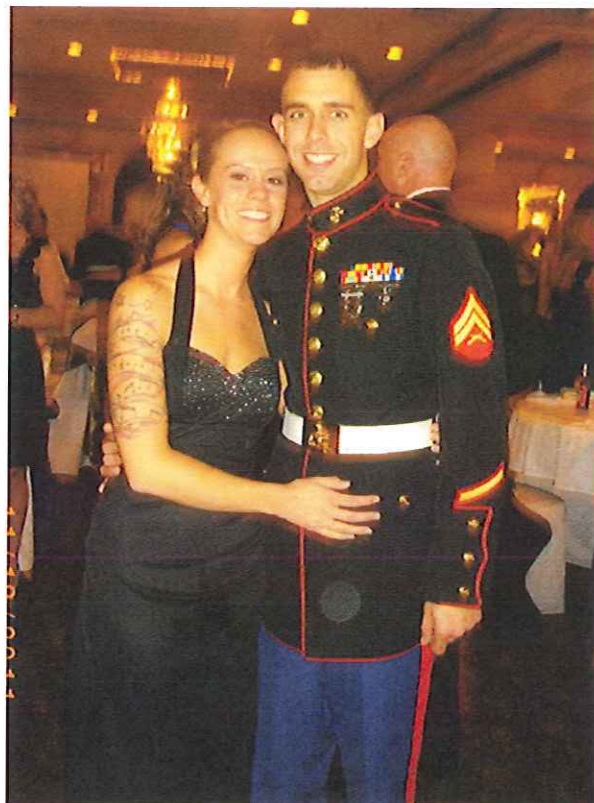
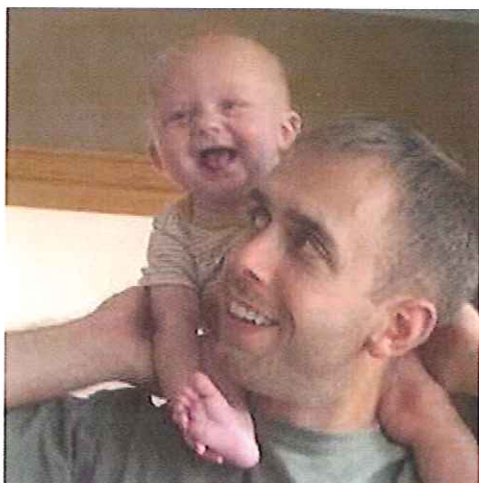
This award is presented to the firefighter who best exemplified the qualities of our mentor and friend, Captain Thomas R. Ropchock. The award has been chosen by the members of the Wellington Firefighter's Association, in recognition of leadership during training and on the fire ground; sacrifices of time away from family; devotion and commitment to the Fire District; and for setting a positive example for others to follow.

The 2014 Thomas R. Ropchock Firefighter of the Year award has been awarded to Firefighter Jason Dumke. Jason has been a member of the department since September 2013.

In addition to his firefighting duties, Dumke, an Afghanistan War veteran with the United States Marine Corps, is also an EMT, and is currently working to obtain his paramedic certification.

During 2014, Jason was active in the department's shift coverage program and also received a "Medal of Valor" for his part in a water rescue at the Wellington Reservoir.

When not at the fire department, Jason and his wife Mandy are proud parents of three children.



Section II: Finances

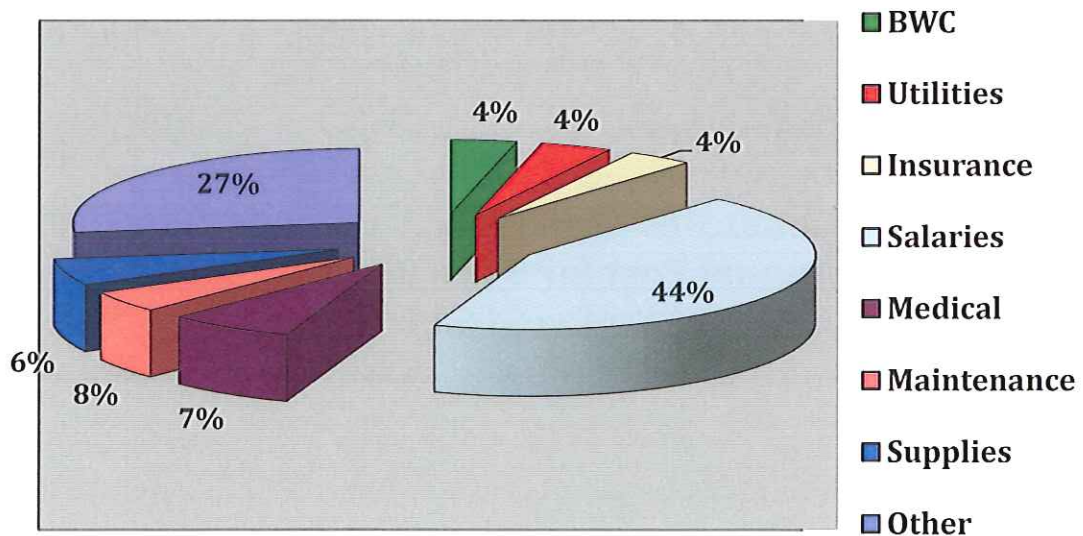
Current Financial Status

By Vanya Hales, Fiscal Officer

It is anticipated that for fiscal year 2015, the current 2.5 mill levy and the District's investments will generate \$683,500. The current operating levy costs the owner of a \$150,000 home approximately \$115 annually, the levy funds are used for vehicle maintenance, salaries of full-time and part-time employees, building maintenance, and training.

	2009	2010	2011	2012	2013	2014	2015 (estimate)
Revenue:	\$701,431	\$740,265	\$766,666	\$790,350	\$714,593	\$711,548	\$683,500
Expenses:	\$639,305	\$915,981	\$737,578	\$555,909	\$499,079	\$568,884	\$649,110
Workers Compensation:	\$12,564	\$14,377	\$50,633	\$53,451	\$19,870	\$20,205	\$24,300
Utilities:	\$14,406	\$19,072	\$15,785	\$14,590	\$24,237	\$22,415	\$26,200
Insurance:	\$20,049	\$19,386	\$20,882	\$22,568	\$23,018	\$21,443	\$24,000
Salaries:	\$247,610	\$225,937	\$240,130	\$247,889	\$223,895	\$253,947	\$285,000
Medical Insurance:	\$49,189	\$45,036	\$41,192	\$36,589	\$38,700	\$42,356	\$46,200
Maintenance:	\$33,536	\$29,465	\$24,128	\$11,979	\$25,480	\$34,891	\$30,000
Supplies:	\$41,712	\$56,763	\$48,436	\$33,305	\$33,173	\$32,192	\$38,000
Other Expenses:	\$220,239	\$505,945	\$295,362	\$135,529	\$110,706	\$141,435	\$175,410

2014 Expenses



Building and Grounds Report

By Assistant Chief Troy Pitts

During 2014, the building and grounds committee researched the replacement of the cracking and deteriorating concrete in bays 1-3 of station two. Along with replacing the floor it has been determined that the brick veneer on station two will need to be repaired in numerous areas, as it has begun to pull away from the structure.

After bids were received and reviewed to replace the floor it was decided to hold off on both projects at this time, and review in 2015. The cost of the project will be approximately \$26,000-approximately \$40,000. The money that was allocated to do this project will be utilized to purchase much needed turnout gear for fifteen of our fire fighters.



Other than reviewing the floor and brick work; normal routine maintenance took place throughout the year.

Fire Levy Summary

Millage.....	2.50
Length.....	5 years
Generates Annually.....	\$696,209
Annual Cost for \$100,000 home.....	\$76.56
Annual Cost for \$150,000 home.....	\$ 114.88

Section III: Fire Prevention

2014 Fire Prevention Overview

By Assistant Chief Bill Brown

Fire prevention remains one of the most beneficial functions of any fire department. Whether performing fire safety inspections or simply teaching a kindergarten class about the importance of fire safety, the benefits are immense to all parties involved. The Wellington Community Fire District Fire Prevention program is comprised of two distinct activities, public education and fire safety inspections, both of which are important to the safety of the community, but also to the firefighters.

The District's Fire Prevention Program has four distinct parts, each important in its own way. Public Education, Fire Safety Inspections, Car Seat Safety Checks, and the Juvenile Fire Setters program reach different segments of our service area, with some overlapping depending upon age.



Public Education

Annually, Wellington Community Fire District personnel routinely spend countless hours teaching to students, senior citizens, scouting groups, and others. In 2014, 252 hours were dedicated to educating the public on fire safety. The following locations were sites of fire safety talks, demonstrations, and visits:

Wellington Country Preschool
Westwood Elementary
McCormick Middle School
Wellington High School
Step-by-Step Preschool
Findley State Park
Lorain County Metro Parks

Weber Healthcare
St. Patrick's Manor
Wellington Senior Citizen's
Office of Aging (SSO)
Lorain County JVS
Firelands Area Council (BSA)
Relay for Life

One of our most valuable fire prevention teaching tools is a fire extinguisher trainer. This unit was purchased with funding through FEMA's Assistance to Firefighters Grant program. Fueled by propane, the unit is controlled by fire personnel, allowing the students to "fight" a wastebasket fire, or other included props.

The training unit adds a great deal of safety to the training program and enables hundreds of students to participate for little cost to the group. The unit was utilized to teach several hundred students, teachers, bus drivers and healthcare workers in 2014.

The following personnel continue to help further our message by providing quality fire safety programs to our citizens:

Chief Mike Wetherbee	36.25
Lt. Troy Pitts	20.75
FF Mike Barlow	16.25
FF Steve Garn	10.50
FF Scott Regal	7.75
FF Justen Tripp	7.75
FF Gordy Lent	7.50
FF Darin Lewis	7
Lt. Chad Regal	6.50
FF Rich Smith	5.50
FF Steve Higgins	4
FF Ed Thorn	3.50
Lt. Greg Frenk	1.50
FF Dusty Reynolds	1.50

AC Bill Brown	24.50
FF Melissa Fuquay	18.75
FF Bryan Hamer	11.50
FF Tim Standen	9.75
FF Ethan Little	7.75
FF Tyler Honoshofsky	7.50
FF Derick Oswald	7
FF Ken Knapp	7
Dave Roser	6
AC Jim Clark	4
FF Dave Crawford	3.50
FF John Clawson	2.50
FF Jason Dumke	1.50

Since 2007, five members of the department have distinguished themselves in the area of Fire Prevention and Public Education. These members have accounted for 43% of the total hours (2113 total hours) in the eight year period and their dedication to educating the general public is evident.

AC Bill Brown	287.25 hrs
Chief Mike Wetherbee	174 hrs
FF Derick Oswald	140.75 hrs
FF Ethan Little	133 hrs
Lt. Troy Pitts	94.25 hrs
AC Jim Clark	84.50 hrs



Fire Safety Inspections

The elimination of hazards which are prone to causing fires is the primary goal of the Wellington Community Fire District's Fire Safety Inspection program. Annually, Certified Fire Safety Inspectors visit local businesses, factories, and schools to perform inspections which focus not on punitive measures, but corrective measures.

Each of the four schools in the district, as well as the industrial complexes, and many of the retail locations receive at least one visit from an inspector annually. In 2014, a total of 85 inspections were completed by one of the districts seven inspectors. Not included in that total are the several hundred inspections that are completed at the Lorain County Fair in August.

Car Seat Safety Checks



For several years, a growing trend had developed in our service area. Parents who were in need of a child car seat inspection/evaluation were unable to access this valuable service without traveling to Elyria. In response to this problem, Firefighter/Medic Derick Oswald participated in a forty hour certification course, becoming the Wellington Community Fire District's first Child Car Seat Safety Technician in May of 2008.

Throughout 2014, Firefighter Oswald, aided by other personnel, conducted three "drive-by" inspections, one in Grafton Village. Additionally, Firefighter Oswald met on numerous other occasions with concerned parents to inspect/install their child safety seats.

	2008	2009	2010	2011	2012	2013	2014
Cars Inspected:	23	38	38	31	49	38	20
Seats Inspected:	28	52	51	38	44	33	23
Seats Replaced:	5	14	23	15	6	5	3

Again, the Wellington Community Fire District's continued efforts to provide quality programs, with involvement from the community, insure safety of the residents.

Juvenile Fire Setters Program

The purpose of the District's Juvenile Fire Setters Program is to identify children at-risk by looking at how and why the fire happened and to recommend prevention programs for fire setters who were motivated by accident, curiosity, or experimentation.

This program, which has been in place since 2008, can be used in conjunction with local law enforcement issues, the juvenile court system, or by direct referral by a concerned relative. The program, headed by Assistant Chief Bill Brown and Firefighter/Medic Derick Oswald is not only available to residents of the Wellington Community Fire District, but also to surrounding departments who may not necessarily have the resources for such a program. The goal of the program is to help evaluate, educate, and recommend services that may stop fire setting behavior and identify any related problems the juvenile may have.

Section IV: Incident Statistics

Incident Types

	2005	2006	2007	2008	2009	2010	2011	2012	2013	2014	%
Medical Assist	65	89	52	89	85	84	86	81	79	89	20%
Vehicle Accident	79	98	88	86	83	73	64	84	73	86	20%
Hazardous Condition	46	56	44	52	37	34	40	49	35	62	14%
Good Intent	42	36	54	50	38	42	45	63	47	56	13%
False Alarms	42	41	52	39	41	53	50	37	57	55	13%
Building Fire	15	27	19	24	21	30	16	34	18	21	5%
Miscellaneous	30	12	14	17	12	23	21	20	16	17	4%
Unauthorized Burning	16	15	8	22	22	13	9	10	12	11	3%
Vehicle Fire	11	8	11	10	8	12	7	9	6	9	2%
Fire, other	9	12	15	12	12	5	8	5	3	9	2%
Grass Fire	13	13	9	4	8	4	2	9	1	8	2%
Tech Rescue	2	8	4	4	1	1	4	5	5	7	2%
Chimney Fire	9	3	4	10	7	1	2	5	4	4	<1%
Carbon Monoxide	14	6	10	19	4	3	4	4	8	4	<1%
Severe Weather	1	3	0	10	1	0	5	1	0	1	<1%
Overpressure	0	0	0	0	4	0	1	1	0	0	<1%
Animal Rescue	3	4	1	1	2	1	0	1	0	0	<1%
Totals	397	431	385	449	386	379	364	418	364	439	

Incidents by District / Dollars Saved Versus Lost

	Prior Value	\$\$ Lost	\$\$ Saved	% Saved
Brighton Township	\$130,000	\$60,000	\$70,000	54%
Huntington Township	\$47,111	\$17,611	\$29,500	63%
Penfield Township	\$522,000	\$96,000	\$426,000	82%
Pittsfield Township	\$270,000	\$142,500	\$127,500	47%
Wellington Township	\$135,500	\$42,000	\$93,500	70%
Wellington Village	\$483,890	\$100	\$483,790	99%

Incident Alarm Time

	2002	2003	2004	2005	2006	2007	2008	2009	2010	2011	2012	2013	2014
6:00am to 5:59pm	185	228	236	224	284	247	285	249	228	236	259	235	268
6:00pm to 5:59am	107	138	138	157	147	138	164	137	151	122	159	129	171

Average Personnel Turnout

Shift	2002	2003	2004	2005	2006	2007	2008	2009	2010	2011	2012	2013	2014
Day Shift	8	7	7	6	7	8	6	7	5	6	6	6	7
Night Shift	13	11	10	10	9	9	8	7	7	6	7	9	9
All Calls	9	9	11	11	10	10	8	8	9	7	8	9	8
Officer Calls	3	2	3	3	2	2	2	2	2	2	3	3	3
First Responder	4	4	4	4	3	4	3	3	3	2	3	3	3
Structure Fire	12	15	14	15	13	15	10	11	11	9	11	10	13
Alarms	8	10	7	8	7	7	6	7	7	7	6	6	7
Overall Average	8	9	8	8	7	8	6	6	6	6	6	7	7

Calls by Day of Week

	2009		2010		2011		2012		2013		2014	
Sunday	47	12.2%	55	14.5%	40	11.1%	50	11.9%	53	14.6%	52	11.8%
Monday	55	14.2%	59	15.5%	52	14.5%	60	14.3%	49	13.5%	64	14.5%
Tuesday	72	18.7%	55	14.5%	57	15.9%	63	15.1%	52	14.3%	66	15.0%
Wednesday	61	15.8%	53	13.9%	44	12.2%	66	15.8%	59	16.2%	62	14.1%
Thursday	46	11.9%	59	15.5%	52	14.5%	49	11.7%	46	12.6%	69	15.7%
Friday	60	15.5%	57	15.0%	55	15.3%	68	16.3%	55	15.1%	63	14.3%
Saturday	45	11.7%	42	11.0%	58	16.2%	62	14.8%	50	13.7%	63	14.3%

Unit Response Summary

	2002	2003	2004	2005	2006	2007	2008	2009	2010	2011	2012	2013	2014
Engine 150	n/a	n/a	n/a	n/a	n/a	n/a	n/a	n/a	n/a	86	187	170	214
Ladder 151	n/a	n/a	n/a	n/a	48	56	41	34	38	33	39	28	35
Truck 152	73	96	106	156	184	146	183	167	147	148	172	160	199
Engine 153	148	195	180	167	211	206	183	176	176	96	32	36	36
Rescue 154	128	157	137	122	144	131	141	130	107	111	127	106	134
Rescue 156	131	157	153	150	176	161	161	149	146	131	145	128	154
Tanker 157	36	35	22	31	41	27	35	31	35	23	28	32	40
Command 159	83	127	115	156	84	86	98	72	54	47	124	87	123

Unit Response Delays Due to Trains

	2002	2003	2004	2005	2006	2007	2008	2009	2010	2011	2012	2013	2014
Train Delays	12	17	31	22	14	4	2	6	3	3	4	1	3

Response Time

	2003	2004	2005	2006	2007	2008	2009	2010	2011	2012	2013	2014
Under 9:00 Min	78%	68%	68%	67%	79%	65%	65%	65%	64%	64%	66%	53%
Under 10:00 Min	82%	75%	74%	77%	80%	70%	71%	72%	70%	72%	70%	60%

Average Response Time by District, Structure Fires

	2004	2005	2006	2007	2008	2009	2010	2011	2012	2013	2014
Brighton Township	10:00	10:00	9:00	6:00	10:00	5:30	5:00	9:00	10:00	N/A	6:00
Huntington Township	6:00	9:00	8:48	10:00	7:30	21:00	9:30	9:00	10:20	11:00	11:30
Penfield Township	7:30	8:00	N/A	6:30	7:30	12:00	N/A	7:30	9:40	12:30	6:30
Pittsfield Township	6:00	7:00	10:40	9:00	6:00	8:00	7:24	7:00	7:20	6:00	8:00
Wellington Township	2:00	5:00	5:20	5:40	3:30	4:00	7:12	11:30	N/A	8:00	4:00
Wellington Village	2:44	3:30	2:05	2:05	3:00	3:15	2:30	3:30	2:53	4:45	3:00

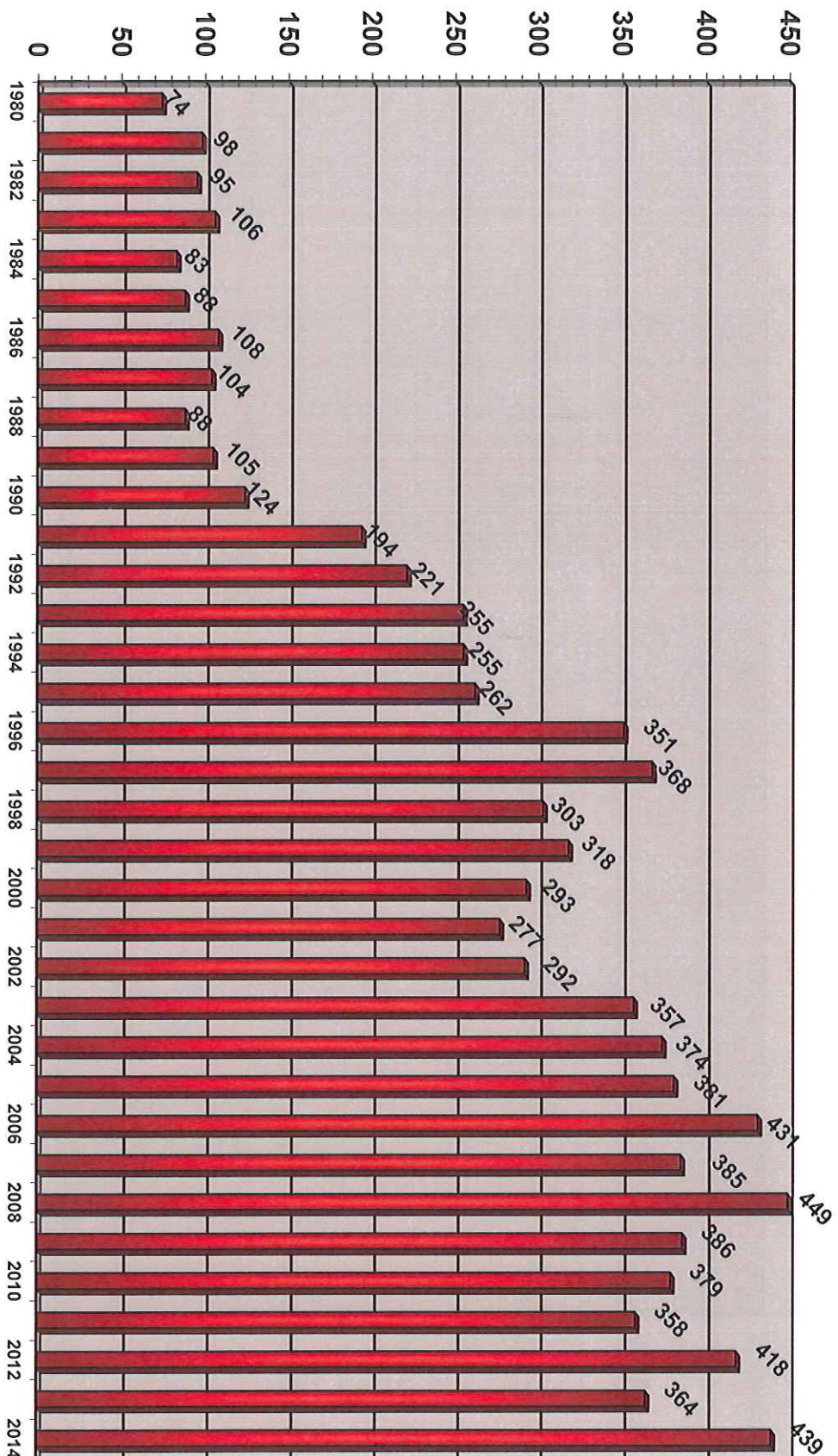
Average Response Time by District, Motor Vehicle Accidents

	2004	2005	2006	2007	2008	2009	2010	2011	2012	2013	2014
Brighton Township	8:30	8:00	6:30	7:00	8:30	10:45	8:40	7:45	5:15	7:15	8:25
Huntington Township	8:40	8:00	7:51	8:32	5:30	7:15	7:23	9:10	10:20	9:45	9:00
Penfield Township	8:00	7:25	7:08	7:17	6:15	7:30	7:36	7:40	8:25	7:45	8:15
Pittsfield Township	7:55	8:30	9:02	8:55	8:15	8:30	9:25	9:45	9:15	9:05	8:15
Wellington Township	4:10	4:20	5:48	3:45	3:45	3:45	5:18	6:25	7:30	5:05	4:30
Wellington Village	3:25	2:50	3:30	2:12	3:15	3:45	2:40	2:45	1:46	2:30	3:30

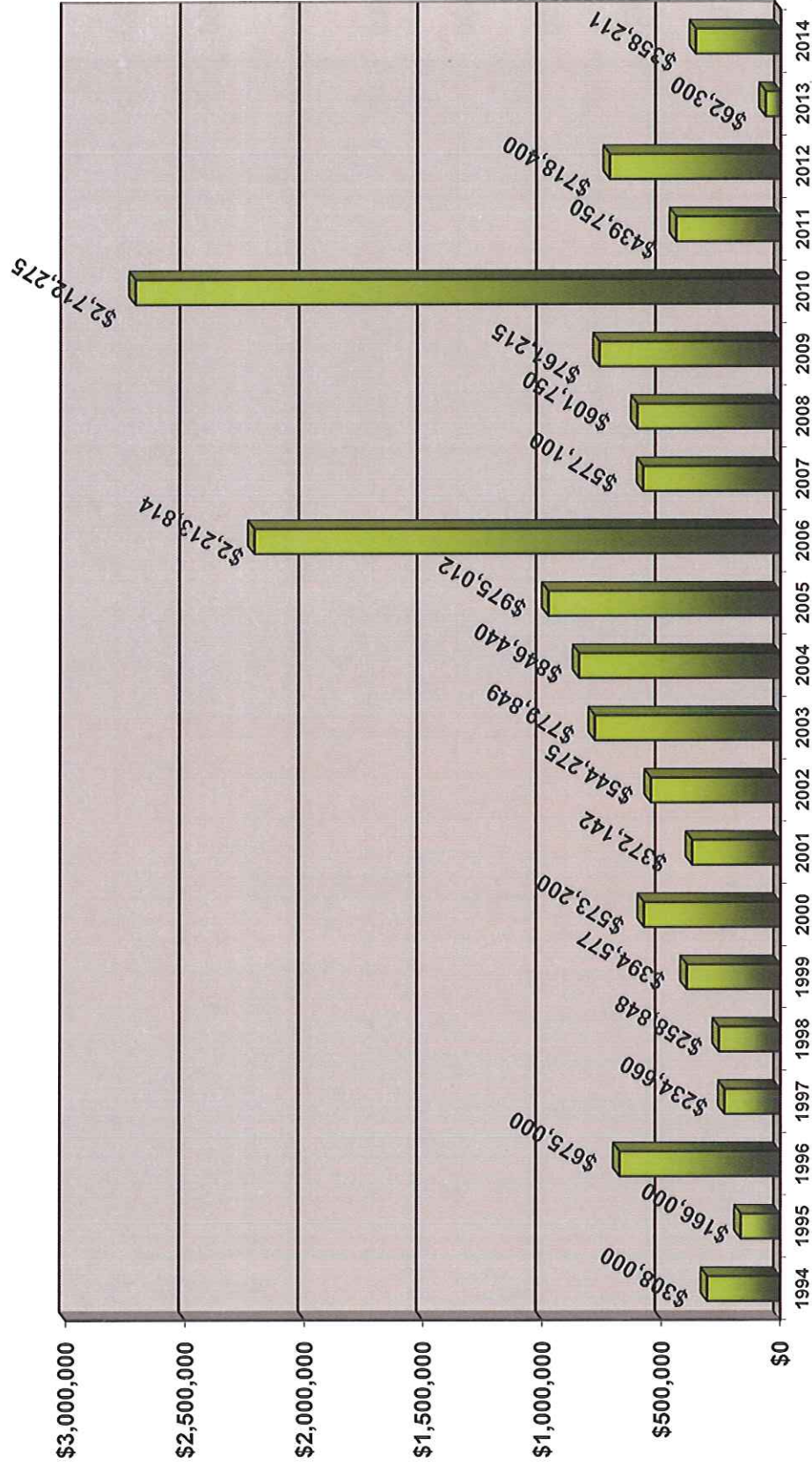
Average Response Time by District, First Responder Calls

	2004	2005	2006	2007	2008	2009	2010	2011	2012	2013	2014
Brighton Township	7:45	N/A	10:30	9:00	7:00	8:00	N/A	9:00	7:30	8:05	9:25
Huntington Township	10:00	7:35	10:40	n/a	6:45	8:00	11:24	9:30	11:20	11:00	9:00
Penfield Township	7:36	N/A	9:12	6:40	8:30	3:00	7:48	8:05	9:00	8:00	5:00
Pittsfield Township	10:10	8:45	6:30	6:00	8:45	9:00	10:42	10:30	9:20	9:05	9:45
Wellington Township	3:00	3:30	5:20	7:00	5:00	5:00	3:36	4:30	6:00	3:45	4:20
Wellington Village	2:24	3:00	2:52	2:44	3:15	2:00	3:20	3:50	2:41	2:16	2:30

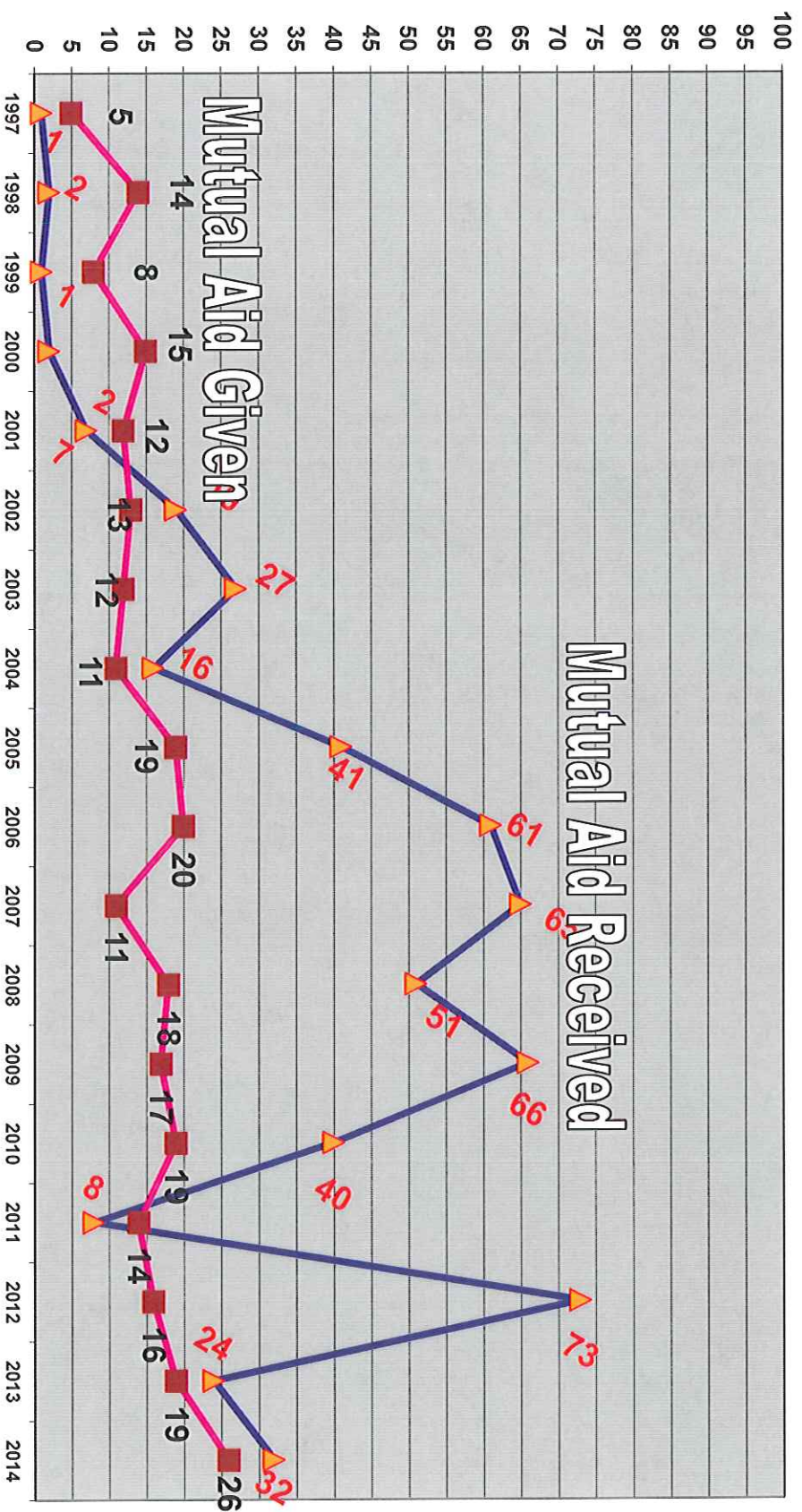
Annual Incidents Summary



Incident Dollar Loss Summary



Mutual Aid Response Summary



Wellington Fire District
Annual Incidents / Dollar Loss
By Township

Brighton Township	2006	2007	2008	2009	2010	2011	2012	2013	2014
Incidents	23	21	24	21	18	24	13	21	22
\$ Loss	\$290,000	\$11,100	\$0	\$244,200	\$9,500	\$5,500	\$45,000	\$0	\$60,000

Huntington Township	2006	2007	2008	2009	2010	2011	2012	2013	2014
Incidents	38	29	37	38	24	18	27	24	36
\$ Loss	\$373,204	\$3,500	\$151,500	\$3,200	\$91,000	\$1,050	\$130,000	\$11,000	\$17,611

Penfield Township	2006	2007	2008	2009	2010	2011	2012	2013	2014
Incidents	46	36	44	39	30	38	51	37	48
\$ Loss	\$0	\$500	\$56,325	\$10,500	\$7,000	\$700	\$88,000	\$1,500	\$96,000

Pittsfield Township	2006	2007	2008	2009	2010	2011	2012	2013	2014
Incidents	69	53	86	63	74	74	79	55	77
\$ Loss	\$344,800	\$750	\$141,200	\$15,000	\$2,604,775	\$218,000	\$294,000	\$500	\$142,500

Wellington Township	2006	2007	2008	2009	2010	2011	2012	2013	2014
Incidents	61	44	51	41	46	37	42	37	51
\$ Loss	\$735,500	\$5,000	\$5,325	\$209,550	\$195,100	\$214,500	\$9,000	\$16,800	\$42,000

Wellington Village	2006	2007	2008	2009	2010	2011	2012	2013	2014
Incidents	171	179	174	149	154	145	167	164	166
\$ Loss	\$470,310	\$556,250	\$247,400	\$278,765	\$4,450	\$49,800	\$152,400	\$32,500	\$100

Wellington Fire District
Monthly Incident Report
Alarm Date Between {01/01/2014} And {12/31/2014}

Incident-Exp#	Alm Date	Twp/Village	Location	Incident Type
14-0000001-000	01/01/2014	OFD	118 LOCUST ST /OBERLIN, OH 44074	571 Cover assignment, standby, moveup
14-0000002-000	01/02/2014	VNE	120 MAPLE ST /207/A/L/SC	311 Medical assist, assist EMS crew
14-0000003-000	01/02/2014	PESE	22551 INDIAN HOLLOW RD	311 Medical assist, assist EMS crew
14-0000004-000	01/03/2014	VNE	120 MAPLE ST /A/L/SC	311 Medical assist, assist EMS crew
14-0000005-000	01/04/2014	OFD	138 SOUTH MAIN ST /OBERLIN, OH 44074	417 Building fire
14-0000006-000	01/06/2014	PINW	16184 SR 58	3221 MVA c/ Scene Safety; No Transport
14-0000007-000	01/06/2014	PINW	15290 QUARRY RD /OBERLIN, OH 44074	414 Arcing, shorted electrical equipment
14-0000008-000	01/06/2014	VNW	224 NORTH MILL ST	424 Carbon monoxide incident
14-0000009-000	01/06/2014	VNW	132 JONES ST	600 Good intent call, Other
14-0000010-000	01/06/2014	VSE	601 SOUTH MAIN ST /B/A/L/SD	731 Sprinkler activation due to malfunction
14-0000011-000	01/07/2014	PESE	23726 FOSTER RD /LITCHFIELD, OH 44129	415 Building fire
14-0000012-000	01/07/2014	VSE	601 SOUTH MAIN ST /B/A/L/SD	741 Sprinkler activation, no fire - unintentional
14-0000013-000	01/08/2014	OFD	161 EAST LORAIN ST /OBERLIN, OH 44074	417 dispatched & cancelled en route
14-0000014-000	01/08/2014	VSW	309 GREENVIEW CT	733 Smoke detector activation due to malfunction
14-0000015-000	01/08/2014	VNW	622 WEST HERRICK AVE	311 Medical assist, assist EMS crew
14-0000016-000	01/08/2014	VNW	160 JONES ST	522 Water or steam leak
14-0000017-000	01/10/2014	PISW	48445 SR 303 /OBERLIN, OH 44074	311 Medical assist, assist EMS crew
14-0000018-000	01/10/2014	VSE	101 WILLARD MEMORIAL SQ /A/L/SW	311 Medical assist, assist EMS crew
14-0000019-000	01/10/2014	VSW	173 DEPOT ST /A	733 Smoke detector activation due to malfunction
14-0000020-000	01/10/2014	VSW	201 WEST HERRICK AVE /L	411 Gasoline or other flammable liquid spill
14-0000021-000	01/12/2014	PESE	23076 FOSTER RD	622 No Incident found on arrival at dispatch address
14-0000022-000	01/12/2014	PINW	47574 SR 303	323 Motor vehicle/pedestrian accident (MV Ped)
14-0000023-000	01/12/2014	PISW	18740 PITTS RD	113 Cooking fire, confined to container
14-0000024-000	01/13/2014	HSE	29490 HAWLEY RD /SULLIVAN, OH 44880	418 Medical assist, assist EMS crew
14-0000065-000	01/13/2014	HSE	27340 WEST RD	350 Extrication, rescue, Other
14-0000025-000	01/14/2014	VNW	130 UNION ST	424A CO Call-Battery Problem
14-0000026-000	01/15/2014	VNW	132 WEST HERRICK AVE	412 Gas leak (natural gas or LPG)
14-0000027-000	01/18/2014	PESE	21749 INDIAN HOLLOW RD	311A Medical assist, Lifeflight Landing Zone
14-0000028-000	01/19/2014	WSE	HAWLEY RD & JONES RD	412 Gas leak (natural gas or LPG)
14-0000029-000	01/20/2014	HNE	25300 WEST RD	311 Medical assist, assist EMS crew
14-0000030-000	01/21/2014	VSE	508 DICKSON ST	600 Good intent call, Other
14-0000031-000	01/22/2014	VSE	101 WILLARD MEMORIAL SQ /A/L/SW	733 Smoke detector activation due to malfunction
14-0000032-000	01/22/2014	VSW	145 WOODLAND ST /OBERLIN, OH 44074	417 Smoke or odor removal
14-0000033-000	01/23/2014	BNW	SR 511 / W&LE RR	322A Vehicle accident
14-0000034-000	01/24/2014	PINE	15910 SR 58 /OBERLIN, OH 44074	3222 MVA c/ Scene Safety; Light Extrication; Transport
14-0000035-000	01/25/2014	PINE	HALLAUER RD & KIPTON NICKLE PL	421 MVA c/ Scene Safety; No Transport
14-0000036-000	01/25/2014	HSW	29270 SR 58 /SULLIVAN, OH 44880	622 No Incident found on arrival at dispatch address
14-0000037-000	01/25/2014	BNE	50883 PECK WADSWORTH RD	3222 MVA c/ Scene Safety; Light Extrication; Transport
14-0000038-000	01/25/2014	BSE	JONES RD & SR 511	3221 MVA c/ Scene Safety; No Transport
14-0000039-000	01/25/2014	PISE	45310 WEBSTER RD	311 Medical assist, assist EMS crew
14-0000040-000	01/25/2014	VNW	SR 58	622 No Incident found on arrival at dispatch address

Wellington Fire District
Monthly Incident Report
Alarm Date Between {01/01/2014} And {12/31/2014}

Incident-Exp#	Alm Date	Twp/Village	Location	Incident Type
14-0000041-000	01/28/2014	OFD	600 KENDAL DR /OBERLIN, OH 44074	611 Dispatched & cancelled en route
14-0000042-000	01/28/2014	BSE	SR 18 & SR 511	412 Gas leak (natural gas or LPG)
14-0000043-000	01/28/2014	WSE	44847 SR 18	622 No Incident found on arrival at dispatch address
14-0000044-000	01/29/2014	WSW	22038 FAIR GROUNDS RD /SW	745 Alarm system activation, no fire - unintentional
14-0000045-000	01/30/2014	SPEN	11365 SPENCER MILLS RD /SPENCER, OH 44125	Building fire
14-0000047-000	01/31/2014	PINE	45016 SR 303	743 Smoke detector activation, no fire - unintentional
14-0000046-000	01/31/2014	VNW	226 JONES ST	740 Unintentional transmission of alarm, Other
14-0000048-000	01/31/2014	VNE	720 SHILOH AVE /A/L/SW	311 Medical assist, assist EMS crew
14-0000049-000	02/01/2014	PENW	21225 WEST RD	114 Chimney or flue fire, confined to chimney or flue
14-0000050-000	02/02/2014	VSE	601 SOUTH MAIN ST	731 Sprinkler activation due to malfunction
14-0000051-000	02/03/2014	WNE	SR 58 & PECK WADSWORTH RD	3221 MVA c/ Scene Safety; No Transport
14-0000052-000	02/04/2014	PESW	41807 SR 18	631 Authorized controlled burning
14-0000053-000	02/05/2014	VNW	148 VINE ST	116 Fuel burner/boiler malfunction, fire confined
14-0000054-000	02/05/2014	LAG	19404 SR 301 /LAGRANGE, OH 44050	352 Extrication of victim(s) from vehicle
14-0000055-000	02/05/2014	BSW	SR 18 & SR 511	3221 MVA c/ Scene Safety; No Transport
14-0000056-000	02/06/2014	VNW	621 NORTH MAIN ST	311 Medical assist, assist EMS crew
14-0000057-000	02/06/2014	VSW	334 SOUTH WALDEN LA /D	311 Medical assist, assist EMS crew
14-0000058-000	02/07/2014	PENE	21695 FOSTER RD	735 Alarm system sounded due to malfunction
14-0000059-000	02/07/2014	VSW	413 PROSPECT ST	531 Smoke or odor removal
14-0000060-000	02/08/2014	VNE	123 CORNERSTONE AVE	412 Gas leak (natural gas or LPG)
14-0000061-000	02/09/2014	VSW	222 Reserve CIR	700 False alarm or false call, Other
14-0000062-000	02/10/2014	VSW	385 SOUTH WALDEN LA	311 Medical assist, assist EMS crew
14-0000063-000	02/12/2014	WSE	SR 18 & WEST RD	3221 MVA c/ Scene Safety; No Transport
14-0000064-000	02/13/2014	VSW	123 KENT ST	3221 MVA c/ Scene Safety; No Transport
14-0000066-000	02/15/2014	OFD	538 HILLCREEK DR /OBERLIN, OH 44074	Building fire
14-0000067-000	02/19/2014	VSE	601 SOUTH MAIN ST /B/A/L/SD	741 Sprinkler activation, no fire - unintentional
14-0000068-000	02/19/2014	VSE	214 EAST HERRICK AVE /PO BOX 386 /Village	311 Medical assist, assist EMS crew
14-0000069-000	02/19/2014	VSE	601 SOUTH MAIN ST /B/A/L/SD	732 Extinguishing system activation due to malfunction
14-0000070-000	02/19/2014	VSW	150 JONES RD /Building 6, Apt D	113 Cooking fire, confined to container
14-0000071-000	02/20/2014	LAG	SR 303, Twp. Line, East /LAGRANGE, OH 44050	3221 MVA c/ Scene Safety; Light Extrication; Transport
14-0000072-000	02/20/2014	WSE	24189 SR 58	111 Building fire
14-0000073-000	02/21/2014	HNW	26971 SR 58	412 Gas leak (natural gas or LPG)
14-0000074-000	02/22/2014	HNW	47584 BURSLEY RD	3221 MVA c/ Scene Safety; No Transport
14-0000075-000	02/22/2014	VER	969 VERMILION RD /VERMILION, OH 44089	Swift water rescue
14-0000076-000	02/24/2014	PINE	44020 SR 303	311 Medical assist, assist EMS crew
14-0000077-000	02/25/2014	WNW	19720 SR 58 /LOT #12	445 Arcing, shorted electrical equipment
14-0000078-000	02/26/2014	BSW	22199 GORE ORPHANAGE RD /NEW LONDON, OH 44051	412 Gas leak (natural gas or LPG)
14-0000079-000	02/28/2014	OFD	47826 SR 511 /OBERLIN, OH 44074	111 Building fire
14-0000080-000	02/28/2014	LAG	17056 DIAGONAL RD /LAGRANGE, OH 44050	Building fire
14-0000081-000	03/01/2014	VSW	119 SOUTH MILL ST	531 Smoke or odor removal
14-0000082-000	03/02/2014	VSE	601 SOUTH MAIN ST	531 Smoke or odor removal

Wellington Fire District
Monthly Incident Report
Alarm Date Between {01/01/2014} And {12/31/2014}

Incident-Exp#	Alm Date	Twp/Village	Location	Incident Type
14-0000083-000	03/03/2014	OFD	46440 State Rte 20 /Oberlin, OH 44074	611 Dispatched & cancelled en route
14-0000084-000	03/04/2014	VSW	136 SOUTH MAIN ST /A/H/L/SC	311 Medical assist, assist EMS crew
14-0000085-000	03/04/2014	PINW	48199 SR 20 /A/L/SW/OBERLIN, OH 44074	411 Detector activation, no fire - unintentional
14-0000086-000	03/04/2014	PENW	41530 State Rte 18	412 Gas leak (natural gas or LPG)
14-0000087-000	03/04/2014	PISW	47217 SR 303	111 Building fire
14-0000088-000	03/07/2014	HNW	46576 BURSLEY RD	142 Brush or brush-and-grass mixture fire
14-0000089-000	03/13/2014	PINW	16380 State Rte 58	611 Dispatched & cancelled en route
14-0000090-000	03/14/2014	PINE	15337 HALLAUER RD /OBERLIN, OH 44074	611 No Incident found on arrival at dispatch address
14-0000091-000	03/14/2014	VNE	103 WEBER CT /A/SC/L	311 Medical assist, assist EMS crew
14-0000092-000	03/15/2014	PISW	47117 WHITNEY RD	311 Medical assist, assist EMS crew
14-0000093-000	03/16/2014	HNE	25381 SR 58	341 Search for person on land
14-0000094-000	03/16/2014	WNE	State Rte 18 & WEST RD	3221 MVA c/ Scene Safety; No Transport
14-0000095-000	03/16/2014	PISW	47117 WHITNEY RD	311 Medical assist, assist EMS crew
14-0000096-000	03/18/2014	VSE	154 COURTLAND ST	412 Gas leak (natural gas or LPG)
14-0000097-000	03/18/2014	VNW	622 WEST HERRICK AVE	311 Medical assist, assist EMS crew
14-0000098-000	03/19/2014	VSE	323 COURTLAND ST	424A CO Call-Battery Problem
14-0000099-000	03/22/2014	PINW	48199 SR 20 /A/L/SW/OBERLIN, OH 44074	411 False alarm or false call, Other
14-0000100-000	03/24/2014	VNE	200 MARTS PL /B-5	311 Medical assist, assist EMS crew
14-0000101-000	03/25/2014	WSW	22069 FAIR GROUNDS RD /P.O. BOX 427, WESLEY, OH 44091	411 Medical spill or leak
14-0000102-000	03/28/2014	OFD	47338 State Rte 20 /Oberlin, OH 44074	412 Gas leak (natural gas or LPG)
14-0000103-000	03/29/2014	PESE	40170 SMITH RD	3221 MVA c/ Scene Safety; No Transport
14-0000104-000	03/31/2014	PENE	21939 VERMONT ST /LITCHFIELD, OH 44026	3221 MVA c/ Scene Safety; No Transport
14-0000105-000	04/02/2014	VNW	315 UNION ST	311 Medical assist, assist EMS crew
14-0000106-000	04/03/2014	PINW	48199 SR 20 /A/L/SW/OBERLIN, OH 44074	411 Smoke detector activation, no fire - unintentional
14-0000107-000	04/03/2014	PINW	47050 State Rte 303	3221 MVA c/ Scene Safety; No Transport
14-0000108-000	04/03/2014	BSW	22267 GORE ORPHANAGE RD	311 Medical assist, assist EMS crew
14-0000109-000	04/04/2014	WSE	24307 WEST RD	445 Arcing, shorted electrical equipment
14-0000110-000	04/04/2014	PINE	44722 State Rte 20 /Oberlin, OH 44074	311 Medical assist, assist EMS crew
14-0000111-000	04/05/2014	VNW	629 NORTH MAIN ST /A/H/L	311A Medical assist, Lifelight Landing Zone
14-0000112-000	04/05/2014	WSW	23969 State Rte 58	3221 MVA c/ Scene Safety; No Transport
14-0000113-000	04/06/2014	PINE	14816 HALLAUER RD /Oberlin, OH 44074	311 Medical assist, assist EMS crew
14-0000114-000	04/07/2014	VSE	508 DICKSON ST	311 Medical assist, assist EMS crew
14-0000115-000	04/07/2014	VNW	629 NORTH MAIN ST /A/H/L	671 HazMat release investigation w/no HazMat
14-0000116-000	04/09/2014	WNW	46950 SR 18 /A/S/H/L	412 Gas leak (natural gas or LPG)
14-0000117-000	04/10/2014	VNE	816 NORTH MAIN ST /H/L/SW	730 System malfunction, Other
14-0000118-000	04/10/2014	WSE	24455 WEST RD	143 Grass fire
14-0000119-000	04/10/2014	VSE	117 WILLARD MEMORIAL SQ /A	443 Breakdown of light ballast
14-0000120-000	04/13/2014	HNE	Clark Rd...1/4 mile north of SR 162	3221 MVA c/ Scene Safety; No Transport
14-0000121-000	04/13/2014	VSW	118 SOUTH ST	713 Telephone, malicious false alarm
14-0000122-000	04/15/2014	VNW	129 MIDDLE ST	114 Chimney or flue fire, confined to chimney or flue
14-0000123-000	04/16/2014	PINW	46274 HUGHES RD /Oberlin, OH 44074	423 Motor vehicle/pedestrian accident (MV Ped)

Wellington Fire District
Monthly Incident Report
Alarm Date Between {01/01/2014} And {12/31/2014}

Incident-Exp#	Alm Date	Twp/Village	Location	Incident Type
14-0000124-000	04/16/2014	PENE	State Rte 301 & State Rte 18	3221 MVA c/ Scene Safety; No Transport
14-0000125-000	04/16/2014	VSE	201 SOUTH MAIN ST /A/H/L	700 False alarm or false call, Other
14-0000126-000	04/17/2014	VNE	105 EAST HERRICK AVE	430 Radioactive condition, Other
14-0000127-000	04/17/2014	VNE	135 EAST HERRICK AVE	561 Unauthorized burning
14-0000128-000	04/18/2014	PESE	23834 State Rte 301	631 Authorized controlled burning
14-0000129-000	04/19/2014	BSE	22289 State Rte 511	143 Grass fire
14-0000130-000	04/19/2014	PESW	23003 WEST RD	143 Grass fire
14-0000131-000	04/20/2014	VNE	120 MAPLE ST /Apt 110/A/L/SC	511 Lock-out
14-0000132-000	04/20/2014	PINE	45044 State Rte 20 /Oberlin, OH 44074	3221 MVA c/ Scene Safety; No Transport
14-0000133-000	04/21/2014	OFD	Lincoln ST /Oberlin, OH 44074	571 Cover assignment, standby, moveup
14-0000134-000	04/22/2014	WSW	47755 State Rte 18	323 Motor vehicle/pedestrian accident (MV Ped)
14-0000135-000	04/23/2014	VNW	601 NORTH MAIN ST	561 Unauthorized burning
14-0000136-000	04/24/2014	VNE	139 WEBER CT /A/H/L/SC	740 Unintentional transmission of alarm, Other
14-0000137-000	04/24/2014	CFD	15365 Gifford RD /WAKEMAN, OH 44889	501 Building fire
14-0000138-000	04/24/2014	HSW	47200 STEWART RD /NEW LONDON, OH 44854	501 Building fire
14-0000139-000	04/26/2014	VSW	193 WEST HERRICK AVE	131 Passenger vehicle fire
14-0000140-000	04/27/2014	HSE	26486 HAWLEY RD	143 Grass fire
14-0000141-000	04/30/2014	VSW	126 FOURTH ST	424 Carbon monoxide incident
14-0000142-000	05/01/2014	PENW	41263 PECK WADSWORTH RD	743 Smoke detector activation, no fire - unintentional
14-0000143-000	05/01/2014	PINW	48199 SR 20 /A/L/SW/OBERLIN, OH 44074	743 Smoke detector activation, no fire - unintentional
14-0000144-000	05/02/2014	VSE	218 EAST HERRICK AVE /A	600 Good intent call, Other
14-0000145-000	05/02/2014	BNE	State Rte 18 & QUARRY RD	3223 MVA c/ Scene Safety; Heavy Extrication; Transport
14-0000146-000	05/04/2014	VNE	101 WEBER CT /A/L/S	744 Detector activation, no fire - unintentional
14-0000147-000	05/06/2014	WNW	48101 PECK WADSWORTH RD	3222 MVA c/ Scene Safety; Light Extrication; Transport
14-0000148-000	05/08/2014	HNW	46620 State Rte 162	413 Oil or other combustible liquid spill
14-0000149-000	05/08/2014	PINW	46690 State Rte 303	631 Authorized controlled burning
14-0000150-000	05/10/2014	PENW	19566 State Rte 301	3221 MVA c/ Scene Safety; No Transport
14-0000151-000	05/11/2014	VSW	46400 JONES RD	361 Swimming/recreational water areas rescue
14-0000152-000	05/12/2014	VSE	508 DICKSON ST	671 HazMat release investigation w/no HazMat
14-0000153-000	05/12/2014	VSE	508 SOUTH MAIN ST	400 Hazardous condition, Other
14-0000154-000	05/12/2014	PENW	21872 WHITEHEAD RD	3221 MVA c/ Scene Safety; No Transport
14-0000155-000	05/12/2014	NRFD	Willow Brook DR /NORTH RIDGEVILLE, OH 44130	361 Swimming/recreational water areas rescue
14-0000156-000	05/13/2014	PESE	24362 FOSTER RD /LITCHFIELD, OH 44129	743 Smoke detector activation due to malfunction
14-0000157-000	05/13/2014	PINE	SR 303...1200' East of Quarry Rd	3223 MVA c/ Scene Safety; Heavy Extrication; Transport
14-0000158-000	05/13/2014	WSE	45015 SR 18 /387	131 Passenger vehicle fire
14-0000159-000	05/13/2014	PENW	19814 State Rte 301	131 Passenger vehicle fire
14-0000160-000	05/14/2014	PINE	15181 SR 58 /A/H/L/S/OBERLIN, OH 44074	4014 Dispatched & cancelled en route
14-0000161-000	05/14/2014	LAG	18267 Diagonal RD /Lagrange, OH 44050	501 Building fire
14-0000162-000	05/16/2014	VNW	823 NORTH MAIN ST /H/L	650 Steam, Other gas mistaken for smoke, Other
14-0000163-000	05/17/2014	VNW	823 NORTH MAIN ST /H/L	3221 MVA c/ Scene Safety; No Transport
14-0000164-000	05/17/2014	PINE	State Rte 303 & State Rte 58	3221 MVA c/ Scene Safety; No Transport

Wellington Fire District
Monthly Incident Report
Alarm Date Between {01/01/2014} And {12/31/2014}

Incident-Exp#	Alm Date	Twp/Village	Location	Incident Type
14-0000165-000	05/18/2014	WNW	21761 QUARRY RD	113 Cooking fire, confined to container
14-0000166-000	05/18/2014	WNE	State Rte 18 & HAWLEY RD	3222 MVA c/ Scene Safety; Light Extrication; Transport
14-0000167-000	05/18/2014	BSW	51625 State Rte 18	3221 MVA c/ Scene Safety; No Transport
14-0000168-000	05/20/2014	HSW	28388 SR 58 /SULLIVAN, OH 44880	413 Oil or other combustible liquid spill
14-0000169-000	05/21/2014	VSW	314 SOUTH MAIN ST	561 Unauthorized burning
14-0000170-000	05/22/2014	PINE	43860 KIPTON NICKLE PLATE RD /Oberlin, OH 44074	311 Medical assist, assist EMS crew
14-0000171-000	05/22/2014	WNE	45979 PECK WADSWORTH RD	311 Medical assist, assist EMS crew
14-0000172-000	05/23/2014	VNE	816 NORTH MAIN ST /H/L/SW	743 Smoke detector activation, no fire - unintentional
14-0000173-000	05/25/2014	HNE	25381 SR 58	311A Medical assist, Lifeflight Landing Zone
14-0000174-000	05/25/2014	PINW	15760 QUARRY RD /Oberlin, OH 44074	561 Unauthorized burning
14-0000175-000	05/26/2014	VNW	629 NORTH MAIN ST /A/H/L	311A Medical assist, Lifeflight Landing Zone
14-0000176-000	05/27/2014	PINE	15181 SR 58 /A/H/L/S/OBERLIN, OH 44074	401 Gasoline or other flammable liquid spill
14-0000177-000	05/27/2014	VSE	401 MAGYAR ST /P.O. BOX 86/A/SW	114 Chimney or flue fire, confined to chimney or flue
14-0000178-000	05/28/2014	HUNTWP 9	44901 NEW LONDON EASTERN RD /SULLY, OH 44880	502 Carbon monoxide gas or LPG)
14-0000179-000	05/30/2014	WSW	Quarry Rd....south of SR 18 at the RR	422 Chemical spill or leak
14-0000180-000	05/30/2014	VNE	816 NORTH MAIN ST /H/L/SW	622 No Incident found on arrival at dispatch address
14-0000181-000	05/30/2014	WSW	47935 JONES RD	138 Off-road vehicle or heavy equipment fire
14-0000182-000	06/01/2014	BSE	49233 SR 18	138 Off-road vehicle or heavy equipment fire
14-0000183-000	06/01/2014	HSE	44615 SR 162	561 Unauthorized burning
14-0000184-000	06/03/2014	HNE	25381 SR 58	354 Trench/below-grade rescue
14-0000185-000	06/03/2014	VSE	136 SOUTH MAIN ST	311 Medical assist, assist EMS crew
14-0000186-000	06/04/2014	VSW	136 SOUTH MAIN ST /A/H/L/SC	412 Gas leak (natural gas or LPG)
14-0000187-000	06/04/2014	VSW	107 BENNETT ST	311 Medical assist, assist EMS crew
14-0000188-000	06/04/2014	BSW	52325 SR 18	311 Medical assist, assist EMS crew
14-0000189-000	06/06/2014	VNW	629 NORTH MAIN ST /A/H/L	531 Smoke or odor removal
14-0000190-000	06/06/2014	WSW	24350 SR 58	3221 MVA c/ Scene Safety; No Transport
14-0000191-000	06/07/2014	PISE	State Rte 58 & WEBSTER RD	3221 MVA c/ Scene Safety; No Transport
14-0000192-000	06/07/2014	BNE	State Rte 18 & State Rte 511	322B Vehicle accident/Life Flight
14-0000193-000	06/07/2014	HNW	47890 BURSLEY RD	311A Medical assist, Lifeflight Landing Zone
14-0000194-000	06/08/2014	VSE	214 EAST HERRICK AVE /PO BOX 387/WILSON	743 Smoke detector activation, no fire - unintentional
14-0000195-000	06/09/2014	VSE	214 EAST HERRICK AVE /PO BOX 387/WILSON	311 Medical assist, assist EMS crew
14-0000196-000	06/09/2014	PINE	45970 State Rte 20 /Oberlin, OH 44074	3222 MVA c/ Scene Safety; Light Extrication; Transport
14-0000197-000	06/09/2014	VNE	101 WEBER CT /A/L/S	743 Smoke detector activation, no fire - unintentional
14-0000198-000	06/12/2014	VSE	508 DICKSON ST	424 Carbon monoxide incident
14-0000199-000	06/14/2014	VNE	816 NORTH MAIN ST /H/L/SW	733 Smoke detector activation due to malfunction
14-0000200-000	06/14/2014	WSE	415 SOUTH MAIN ST	3221 MVA c/ Scene Safety; No Transport
14-0000201-000	06/15/2014	BSE	22476 State Rte 511	3223 MVA c/ Scene Safety; Heavy Extrication; Transport
14-0000202-000	06/16/2014	VNW	156 SHEILA DR	311 Medical assist, assist EMS crew
14-0000203-000	06/16/2014	BSW	GORE ORPHANAGE RD & STOCKING RD	3221 MVA c/ Scene Safety; No Transport
14-0000204-000	06/18/2014	PENW	42193 WEBSTER RD	744 Detector activation, no fire - unintentional
14-0000205-000	06/18/2014	WNE	21768 HAWLEY RD	745 Alarm system activation, no fire - unintentional

Wellington Fire District
Monthly Incident Report
Alarm Date Between {01/01/2014} And {12/31/2014}

Incident-Exp#	Alm Date	Twp/Village	Location	Incident Type
14-0000206-000	06/20/2014	VNW	226 NORTH MILL ST	412 Gas leak (natural gas or LPG)
14-0000207-000	06/20/2014	PENW	20250 WHITEHEAD RD	3222 MVA c/ Scene Safety; Light Extrication; Transport
14-0000208-000	06/21/2014	VSW	549 PARKSIDE RESERVE ST	510 Person in distress, Other
14-0000209-000	06/21/2014	VNE	116 EAST HERRICK AVE	413 Oil or other combustible liquid spill
14-0000210-000	06/21/2014	PINW	15683 QUARRY RD /Oberlin, OH 44074	3222 MVA c/ Scene Safety; Light Extrication; Transport
14-0000211-000	06/22/2014	HNE	25381 SR 58	311 Medical assist, assist EMS crew
14-0000212-000	06/23/2014	WNW	AUSTIN RD & QUARRY RD	444 Power line down
14-0000213-000	06/24/2014	PINW	15950 QUARRY RD /Oberlin, OH 44074	444 Power line down
14-0000214-000	06/25/2014	PINW	48199 SR 20 /A/L/SW/OBERLIN, OH 44074	4624 Smoke detector activation, no fire - unintentional
14-0000215-000	06/25/2014	CAR	38524 Robson RD /GRAFTON, OH 44024	063 Swift water rescue
14-0000216-000	06/26/2014	OFD	200 West Lorain STQ /Oberlin, OH 44064	641 Dispatched & cancelled en route
14-0000217-000	06/26/2014	EAT	36590 Butternut Ridge RD /NORTH RIDGEVILLE, OH 44130	0609 Unintentional water areas rescue
14-0000218-000	06/27/2014	PENW	21175 WEST RD	631 Authorized controlled burning
14-0000219-000	06/29/2014	PESE	40170 SMITH RD	311A Medical assist, Lifeflight Landing Zone
14-0000220-000	06/30/2014	CFD	49349 Austin RD	424A CO Call-Battery Problem
14-0000221-000	07/01/2014	PINE	45890 State Rte 20 /Oberlin, OH 44074	3221 MVA c/ Scene Safety; No Transport
14-0000222-000	07/04/2014	WNW	47099 PECK WADSWORTH RD	631 Authorized controlled burning
14-0000223-000	07/06/2014	PINW	15170 QUARRY RD /Oberlin, OH 44074	631 Authorized controlled burning
14-0000224-000	07/08/2014	PISW	18847 PITTS RD	111 Building fire
14-0000225-000	07/08/2014	BNE	20037 MOSHER RD	445 Arcing, shorted electrical equipment
14-0000226-000	07/08/2014	OFD	95 East Vine ST /Oberlin, OH 44074	611 Dispatched & cancelled en route
14-0000227-000	07/09/2014	VNE	215 EAST HAMILTON ST	424A CO Call-Battery Problem
14-0000228-000	07/10/2014	PESE	22371 FOSTER RD	412 Gas leak (natural gas or LPG)
14-0000229-000	07/12/2014	VNW	200 WENNER ST /D/L	410 Combustible/flammable gas/liquid condition, other
14-0000230-000	07/14/2014	PINE	45840 State Rte 20 /Oberlin, OH 44074	3222 MVA c/ Scene Safety; Light Extrication; Transport
14-0000231-000	07/14/2014	VSE	132 FOREST ST	111 Building fire
14-0000232-000	07/14/2014	VSE	401 MAGYAR ST /P.O. BOX 86/A/SW	311 Medical assist, assist EMS crew
14-0000233-000	07/14/2014	LAG	42980 WHITNEY RD /LAGRANGE, OH 44026	6406 Dispatched & cancelled en route
14-0000234-000	07/15/2014	VNW	North Main RR Crossing	413 Oil or other combustible liquid spill
14-0000235-000	07/15/2014	VSE	154 COURTLAND ST	412 Gas leak (natural gas or LPG)
14-0000236-000	07/15/2014	WSW	23000 FAIRGROUNDS RD	311A Medical assist, Lifeflight Landing Zone
14-0000237-000	07/17/2014	WNE	44254 PECK WADSWORTH RD	631 Authorized controlled burning
14-0000238-000	07/18/2014	VSW	Maygar St RR Crossing	142 Brush or brush-and-grass mixture fire
14-0000239-000	07/18/2014	PINE	43569 KIPTON NICKLE PLATE RD /Oberlin, OH 44074	641 Dispatched & cancelled en route
14-0000240-000	07/18/2014	VNW	202 KELLY ST /A	311 Medical assist, assist EMS crew
14-0000241-000	07/19/2014	PINE	44313 HUGHES RD /Oberlin, OH 44074	464 Outside mailbox fire
14-0000242-000	07/20/2014	VSE	402 SOUTH MAIN ST	311C Medical assist, lift assist
14-0000243-000	07/21/2014	VNW	132 JONES ST	733 Smoke detector activation due to malfunction
14-0000244-000	07/23/2014	CFD	SR 303, Between Gore and Baird Rd	611 Dispatched & cancelled en route
14-0000245-000	07/23/2014	PINE	15181 SR 58 /A/H/L/S/OBERLIN, OH 44074	311 Medical assist, assist EMS crew
14-0000246-000	07/23/2014	PINW	16920 State Route 58	3222 MVA c/ Scene Safety; Light Extrication; Transport

Wellington Fire District
Monthly Incident Report
Alarm Date Between {01/01/2014} And {12/31/2014}

Incident-Exp#	Alm Date	Twp/Village	Location	Incident Type
14-0000247-000	07/24/2014	HUNTWP 10	26677 SR 58 /A/L	745 Alarm system activation, no fire - unintentional
14-0000248-000	07/24/2014	VNE	120 MAPLE ST /A/L/SC	611 Dispatched & cancelled en route
14-0000249-000	07/24/2014	WSW	23000 FAIRGROUNDS RD	311A Medical assist, Lifeflight Landing Zone
14-0000250-000	07/25/2014	PINE	15181 SR 58 /A/H/L/S/OBERLIN, OH 44074	611 Dispatched & cancelled en route
14-0000251-000	07/26/2014	PINW	46663 State Rte 303	3221 MVA c/ Scene Safety; No Transport
14-0000252-000	07/26/2014	VSW	125 ERIE ST	561 Unauthorized burning
14-0000253-000	07/26/2014	VNW	823 NORTH MAIN ST /H/L	311 Medical assist, assist EMS crew
14-0000254-000	07/29/2014	VNE	103 WEBER CT /A/SC/L	744 Detector activation, no fire - unintentional
14-0000255-000	07/29/2014	PINE	45044 State Rte 20 /Oberlin, OH 44074	10 Combustible/flammable gas/liquid condition, other
14-0000256-000	08/01/2014	PINE	44020 SR 303	311 Medical assist, assist EMS crew
14-0000257-000	08/06/2014	WSW	23000 FAIRGROUNDS RD	311A Medical assist, Lifeflight Landing Zone
14-0000258-000	08/07/2014	VSE	209 WEST HERRICK AVE	422 Chemical spill or leak
14-0000259-000	08/07/2014	WSE	22480 HAWLEY RD	561 Unauthorized burning
14-0000260-000	08/08/2014	HNE	Pratt Rd...200 yds east of Hawley	3221 MVA c/ Scene Safety; No Transport
14-0000261-000	08/08/2014	VSW	369 NORTH WALDEN LA /Apt. C	531 Smoke or odor removal
14-0000262-000	08/09/2014	VNE	120 MAPLE ST /Apt 225/A/L/SC	331 Lock-in (if lock out , use 511)
14-0000263-000	08/09/2014	VNW	207 JONES ST	3221 MVA c/ Scene Safety; No Transport
14-0000264-000	08/10/2014	PENE	38976 State Rte 18	3222 MVA c/ Scene Safety; Light Extrication; Transport
14-0000265-000	08/10/2014	VSE	601 SOUTH MAIN ST /B/A/L/SD	731 Sprinkler activation due to malfunction
14-0000266-000	08/12/2014	WSW	23000 FAIRGROUNDS RD	611 Dispatched & cancelled en route
14-0000267-000	08/16/2014	VSW	100 PROSPECT ST	3221 MVA c/ Scene Safety; No Transport
14-0000268-000	08/17/2014	VSE	187 EAST HERRICK AVE	3221 MVA c/ Scene Safety; No Transport
14-0000269-000	08/17/2014	HSE	44901 NEW LONDON EASTERN RD /SULBURN, OH 44880	561 Unauthorized burning
14-0000270-000	08/17/2014	WSW	23000 FAIRGROUNDS RD	412 Gas leak (natural gas or LPG)
14-0000271-000	08/18/2014	HSE	27101 SR 58	311A Medical assist, Lifeflight Landing Zone
14-0000272-000	08/21/2014	PESE	SR 18, near Foster Road./LITCHFIELD, OH 44125	622 No Incident found on arrival at dispatch address
14-0000273-000	08/22/2014	WAKE	6886 Zenobia RD /Wakeman, OH 44880	331 Authorized controlled burning
14-0000274-000	08/22/2014	LAG	40734 Webster RD /Lagrange, OH 44050	331 Cooking fire, confined to container
14-0000275-000	08/22/2014	PENE	20739 VERMONT ST /Litchfield, OH 44125	331 Authorized controlled burning
14-0000276-000	08/23/2014	VNE	816 NORTH MAIN ST /H/L/SW	745 Alarm system activation, no fire - unintentional
14-0000277-000	08/23/2014	VSW	136 SOUTH MAIN ST /A/H/L/SC	733 Smoke detector activation due to malfunction
14-0000278-000	08/23/2014	VSW	136 SOUTH MAIN ST /A/H/L/SC	733 Smoke detector activation due to malfunction
14-0000279-000	08/25/2014	PESW	FOSTER RD & JONES RD	444 Power line down
14-0000280-000	08/25/2014	HSE	25381 State Rte 58	3221 MVA c/ Scene Safety; No Transport
14-0000281-000	08/25/2014	VNW	132 JONES ST	622 No Incident found on arrival at dispatch address
14-0000282-000	08/26/2014	WSW	23000 FAIRGROUNDS RD	311A Medical assist, Lifeflight Landing Zone
14-0000283-000	08/26/2014	OFD	337 Reamer CT /Oberlin, OH 44074	611 Dispatched & cancelled en route
14-0000284-000	08/26/2014	HNE	27805 WEST RD /SPENCER, OH 44273	331 Authorized controlled burning
14-0000285-000	08/28/2014	PENW	43244 SR 18	311 Medical assist, assist EMS crew
14-0000286-000	08/30/2014	PESE	22884 State Rte 301	3221 MVA c/ Scene Safety; No Transport
14-0000287-000	08/30/2014	BNW	SR 511 and W&LE tracks...4000 ft West of the route	561 Unauthorized burning

Wellington Fire District
Monthly Incident Report
Alarm Date Between {01/01/2014} And {12/31/2014}

Incident-Exp#	Alm Date	Twp/Village	Location	Incident Type
14-0000288-000	08/30/2014	HSE	28740 WEST RD	322 Motor vehicle accident with injuries
14-0000289-000	08/31/2014	PINW	16514 PITTS RD	631 Authorized controlled burning
14-0000290-000	09/01/2014	WNE	Hawley Rd, nothr of 20645...open field	561 Unauthorized burning
14-0000291-000	09/02/2014	PINE	15181 SR 58 /A/H/L/S/OBERLIN, OH 44074	4014 Medical assist, assist EMS crew
14-0000292-000	09/03/2014	VSW	136 SOUTH MAIN ST /A/H/L/SC	311 Medical assist, assist EMS crew
14-0000293-000	09/03/2014	PESE	24155 SR 301	631 Authorized controlled burning
14-0000294-000	09/04/2014	VNE	800 NORTH MAIN ST /H	311 Medical assist, assist EMS crew
14-0000295-000	09/04/2014	VSW	586 PARKSIDE RESERVE ST	622 No Incident found on arrival at dispatch address
14-0000296-000	09/04/2014	VSW	107 BENNETT ST	311 Medical assist, assist EMS crew
14-0000297-000	09/05/2014	WNW	19671 Quarry RD	736 CO detector activation due to malfunction
14-0000298-000	09/05/2014	PISE	16880 West RD	3222 MVA c/ Scene Safety; Light Extrication; Transport
14-0000299-000	09/06/2014	PINW	48199 SR 20 /A/L/SW/OBERLIN, OH 44074	4014 Medical assist, assist EMS crew
14-0000300-000	09/06/2014	VSW	355 North Walden LA /A	531 Smoke or odor removal
14-0000301-000	09/06/2014	HSE	28961 State Rte 58	3221 MVA c/ Scene Safety; No Transport
14-0000302-000	09/07/2014	AV	3540 Long RD /AVON, OH 44011	361 Swimming/recreational water areas rescue
14-0000303-000	09/10/2014	VNW	629 NORTH MAIN ST /A/H/L	412 Gas leak (natural gas or LPG)
14-0000304-000	09/11/2014	PENE	SR 18 & Vermont ST	131 Passenger vehicle fire
14-0000305-000	09/15/2014	PINE	45121 SR 20 /Oberlin, OH 44074	323 Motor vehicle/pedestrian accident (MV Ped)
14-0000306-000	09/15/2014	VNW	629 NORTH MAIN ST /A/H/L	311 Medical assist, assist EMS crew
14-0000307-000	09/15/2014	VSW	134 Bennett ST	424A CO Call-Battery Problem
14-0000308-000	09/16/2014	VNE	333 East Herrick AVE	622 No Incident found on arrival at dispatch address
14-0000309-000	09/16/2014	SPEN	11201 Old Mill RD /SPENCER, OH 44275	51 Building fire
14-0000310-000	09/16/2014	VSW	Alley next to 115 West Herrick Avenue	412 Gas leak (natural gas or LPG)
14-0000311-000	09/18/2014	VSW	134 Bennett ST	311 Medical assist, assist EMS crew
14-0000312-000	09/18/2014	VNW	615 West Herrick AVE	550 Public service assistance, Other
14-0000313-000	09/19/2014	BNE	19897 SR 511	3222 MVA c/ Scene Safety; Light Extrication; Transport
14-0000314-000	09/21/2014	PINE	14816 HALLAUER RD /Oberlin, OH 44074	4014 Medical assist, assist EMS crew
14-0000315-000	09/22/2014	CFD	19041 Gore Orphanage RD	611 Dispatched & cancelled en route
14-0000316-000	09/23/2014	OFD	544 West College ST /Oberlin, OH 44074	611 Dispatched & cancelled en route
14-0000317-000	09/24/2014	PISE	18819 Hawley RD	743 Smoke detector activation, no fire - unintentional
14-0000318-000	09/26/2014	VNE	120 MAPLE ST /101/A/L/SC	311 Medical assist, assist EMS crew
14-0000319-000	09/28/2014	VNE	676 North Main ST	622 No Incident found on arrival at dispatch address
14-0000320-000	09/29/2014	VSW	107 BENNETT ST	311 Medical assist, assist EMS crew
14-0000321-000	09/29/2014	PENW	19520 Nickle-Plate Diagonal RD	561 Unauthorized burning
14-0000322-000	09/30/2014	VNE	In the area of 511 East Herrick Avenue	412 Gas leak (natural gas or LPG)
14-0000323-000	09/30/2014	LAG	41813 Whitney RD /Lagrange, OH 44050	511 Building fire
14-0000324-000	10/01/2014	WSE	45315 SR 18	561 Unauthorized burning
14-0000325-000	10/01/2014	WNE	45430 Peck Wadsworth RD	311A Medical assist, Lifeflight Landing Zone
14-0000326-000	10/03/2014	BSW	100 yds south of 23160 Gore Orphanage RD	3222 MVA c/ Scene Safety; Light Extrication; Transport
14-0000327-000	10/03/2014	PINW	SR 58 & SR 303	3222 MVA c/ Scene Safety; Light Extrication; Transport
14-0000328-000	10/07/2014	OFD	13676 West RD /Oberlin, OH 44074	611 Dispatched & cancelled en route

Wellington Fire District
Monthly Incident Report
Alarm Date Between {01/01/2014} And {12/31/2014}

Incident-Exp#	Alm Date	Twp/Village	Location	Incident Type
14-0000329-000	10/07/2014	WNE	19948 SR 58	3221 MVA c/ Scene Safety; No Transport
14-0000330-000	10/09/2014	PINW	SR 20, 300 yds East of SR 58/Oberlin, OH 44074	3221 MVA c/ Scene Safety; Light Extrication; Transport
14-0000331-000	10/09/2014	PESE	40755 Jones RD	131 Passenger vehicle fire
14-0000332-000	10/09/2014	HSE	27101 SR 58	311A Medical assist, Lifeflight Landing Zone
14-0000333-000	10/10/2014	VSW	136 SOUTH MAIN ST /A/H/L/SC	311 Medical assist, assist EMS crew
14-0000334-000	10/10/2014	VNW	805 PATRIOT DR /Suite E/L/A	311 Medical assist, assist EMS crew
14-0000335-000	10/11/2014	VNW	701 NORTH MAIN ST /LOT44	311 Medical assist, assist EMS crew
14-0000336-000	10/11/2014	VSW	342 NORTH WALDEN LA	113 Cooking fire, confined to container
14-0000337-000	10/12/2014	WNW	19720 SR 58 /LOT #14	131 Passenger vehicle fire
14-0000338-000	10/13/2014	PISE	45310 WEBSTER RD	412 Gas leak (natural gas or LPG)
14-0000339-000	10/16/2014	VNE	120 MAPLE ST /A/L/SC	311 Medical assist, assist EMS crew
14-0000340-000	10/16/2014	BNE	49464 SR 18	800 Severe weather or natural disaster, Other
14-0000341-000	10/18/2014	BNE	SR 18 & Quarry RD	3223 MVA c/ Scene Safety; Heavy Extrication; Transport
14-0000342-000	10/18/2014	PINW	48031 SR 303	311 Medical assist, assist EMS crew
14-0000343-000	10/20/2014	HNW	SR 58 & Griggs RD	444 Power line down
14-0000344-000	10/21/2014	VNE	419 Barker ST	311 Medical assist, assist EMS crew
14-0000345-000	10/22/2014	HNE	SR 162 & West RD	3222 MVA c/ Scene Safety; Light Extrication; Transport
14-0000346-000	10/23/2014	WNE	45979 Peck Wadsworth RD	3221 MVA c/ Scene Safety; No Transport
14-0000347-000	10/23/2014	VNW	629 NORTH MAIN ST /A/H/L	445 Arcing, shorted electrical equipment
14-0000348-000	10/23/2014	VNE	139 WEBER CT /A/H/L/SC	311 Medical assist, assist EMS crew
14-0000349-000	10/23/2014	PENW	20243 Whitehead RD	3221 MVA c/ Scene Safety; No Transport
14-0000350-000	10/23/2014	VNW	665 North Main ST	323 Motor vehicle/pedestrian accident (MV Ped)
14-0000351-000	10/23/2014	PINW	15480 Quarry RD /Oberlin, OH 44074	3221 MVA c/ Scene Safety; No Transport
14-0000352-000	10/24/2014	OFD	203 East College ST /Oberlin, OH 44074	111 Building fire
14-0000353-000	10/25/2014	LAG	264 Stable RD /Lagrange, OH 44050	111 Building fire
14-0000354-000	10/26/2014	WSE	631 South Main ST	413 Oil or other combustible liquid spill
14-0000355-000	10/26/2014	PESW	42000 Smith RD	311A Medical assist, Lifeflight Landing Zone
14-0000356-000	10/26/2014	VNE	816 NORTH MAIN ST /H/L/SW	412 Gas leak (natural gas or LPG)
14-0000357-000	10/27/2014	PINW	48199 SR 20 /A/L/SW/OBERLIN, OH 44074	411 Local alarm system, malicious false alarm
14-0000358-000	10/28/2014	PINW	48199 SR 20 /A/L/SW/OBERLIN, OH 44074	411 Dispatched & cancelled en route
14-0000359-000	10/28/2014	WSW	47935 JONES RD	311 Medical assist, assist EMS crew
14-0000360-000	10/28/2014	PENE	SR 18 & Indian Hollow RD	3222 MVA c/ Scene Safety; Light Extrication; Transport
14-0000361-000	10/28/2014	PISW	46553 Whitney RD	311 Medical assist, assist EMS crew
14-0000362-000	10/29/2014	VSW	306 Prospect ST	424A CO Call-Battery Problem
14-0000363-000	10/30/2014	VNW	221 Union ST	671 HazMat release investigation w/no HazMat
14-0000364-000	10/31/2014	VSW	134 Bennett ST	412 Gas leak (natural gas or LPG)
14-0000365-000	10/31/2014	PENE	39349 Short RD /GRAFTON, OH 44044	114 Chimney or flue fire, confined to chimney or flue
14-0000366-000	11/02/2014	WSW	23000 FAIRGROUNDS RD	311A Medical assist, Lifeflight Landing Zone
14-0000367-000	11/03/2014	VNW	244 Johns ST	412 Gas leak (natural gas or LPG)
14-0000368-000	11/03/2014	PESE	22732 Indian Hollow RD	141 Forest, woods or wildland fire
14-0000369-000	11/04/2014	VSE	510 DICKSON ST /S	740 Unintentional transmission of alarm, Other

Wellington Fire District
Monthly Incident Report
Alarm Date Between {01/01/2014} And {12/31/2014}

Incident-Exp#	Alm Date	Twp/Village	Location	Incident Type
14-0000370-000	11/04/2014	VNW	313 Union ST	420 Toxic condition, Other
14-0000371-000	11/04/2014	LAG	18518 Whitehead RD /LAGRANGE, OH 44090	440 Outside rubbish, trash or waste fire
14-0000372-000	11/05/2014	VSW	356 Northwoods AVE	412 Gas leak (natural gas or LPG)
14-0000373-000	11/06/2014	PINW	16991 Quarry RD	162 Outside equipment fire
14-0000374-000	11/06/2014	VSW	152 Reserve CIR	311 Medical assist, assist EMS crew
14-0000375-000	11/09/2014	HNW	27355 Clark RD	3221 MVA c/ Scene Safety; No Transport
14-0000376-000	11/09/2014	WSE	505 SOUTH MAIN ST	631 Authorized controlled burning
14-0000377-000	11/11/2014	PESE	22732 Indian Hollow RD	631 Authorized controlled burning
14-0000378-000	11/12/2014	VNW	701 NORTH MAIN ST	3221 MVA c/ Scene Safety; No Transport
14-0000379-000	11/13/2014	VNE	721 BROOKSIDE CT	511 Lock-out
14-0000380-000	11/13/2014	VNE	517 Barker ST	412 Gas leak (natural gas or LPG)
14-0000382-000	11/13/2014	VNW	420 West Herrick AVE	424A CO Call-Battery Problem
14-0000381-000	11/13/2014	VNW	203 NORTH MAIN ST /A	743 Smoke detector activation, no fire - unintentional
14-0000383-000	11/14/2014	CFD	48419 SR 20 /Oberlin, OH 44074	3221 MVA c/ Scene Safety; No Transport
14-0000384-000	11/15/2014	PISE	45841 SR 303 /A/SW/OBERLIN, OH 44074	401A Malicious, mischievous false call, Other
14-0000385-000	11/17/2014	HSE	27630 SR 58	3222 MVA c/ Scene Safety; Light Extrication; Transport
14-0000386-000	11/18/2014	PENE	Indian Hollow RD & Foster RD	3221 MVA c/ Scene Safety; No Transport
14-0000387-000	11/18/2014	ROC	24816 Quarry RD	111 Building fire
14-0000388-000	11/19/2014	VSE	408 Courtland ST	671 HazMat release investigation w/no HazMat
14-0000389-000	11/19/2014	VSE	214 EAST HERRICK AVE /PO BOX 386 /A/SW/OBERLIN, OH 44074	401A Alarm system activation, no fire - unintentional
14-0000390-000	11/19/2014	PINE	15181 SR 58 /A/H/L/S/OBERLIN, OH 44074	401 Medical assist, assist EMS crew
14-0000391-000	11/19/2014	HSE	44497 SR 162	111 Building fire
14-0000392-000	11/19/2014	WNW	47810 SR 18	311 Medical assist, assist EMS crew
14-0000393-000	11/19/2014	VSE	340 PROSPECT ST	611 Dispatched & cancelled en route
14-0000394-000	11/22/2014	WNW	48348 SR 18	3222 MVA c/ Scene Safety; Light Extrication; Transport
14-0000395-000	11/22/2014	PESW	24461 SR 301	3221 MVA c/ Scene Safety; No Transport
14-0000396-000	11/22/2014	PENW	41094 SR 18	412 Gas leak (natural gas or LPG)
14-0000397-000	11/24/2014	HSE	45198 SR 162	412 Gas leak (natural gas or LPG)
14-0000398-000	11/24/2014	VNE	628 North Main ST	3222 MVA c/ Scene Safety; Light Extrication; Transport
14-0000399-000	11/24/2014	PENE	21300 Vermont ST	440 Electrical wiring/equipment problem, Other
14-0000400-000	11/24/2014	PISW	Quarry RD & Merriam RD	440 Electrical wiring/equipment problem, Other
14-0000401-000	11/24/2014	PINW	Quarry RD & Hughes RD	440 Electrical wiring/equipment problem, Other
14-0000402-000	11/24/2014	PINE	SR 58 near Hughes Rd	440 Electrical wiring/equipment problem, Other
14-0000403-000	11/25/2014	VNE	120 MAPLE ST /A/L/SC	311C Medical assist, lift assist
14-0000404-000	11/27/2014	VNW	203.5 North Main ST	743 Smoke detector activation, no fire - unintentional
14-0000405-000	11/29/2014	WSW	23000 FAIRGROUNDS RD	311A Medical assist, Lifelight Landing Zone
14-0000406-000	11/30/2014	PESW	43065 SR 18	311 Medical assist, assist EMS crew
14-0000407-000	12/01/2014	PESE	40788 Jones RD	622 No Incident found on arrival at dispatch address
14-0000408-000	12/03/2014	OFD	420 East College ST /Oberlin, OH 44074	111 Building fire
14-0000409-000	12/04/2014	VSE	201 SOUTH MAIN ST /A/H/L	130 Mobile property (vehicle) fire, Other
14-0000410-000	12/06/2014	PISW	47361 Merriam RD	445 Arcing, shorted electrical equipment

Wellington Fire District
Monthly Incident Report
Alarm Date Between {01/01/2014} And {12/31/2014}

Incident-Exp#	Alm Date	Twp/Village	Location	Incident Type
14-0000411-000	12/07/2014	WNW	48324 SR 18	3221 MVA c/ Scene Safety; No Transport
14-0000412-000	12/08/2014	VNE	234 MAPLE ST /P.O. BOX 86/A/SW	311 Medical assist, assist EMS crew
14-0000413-000	12/09/2014	PINW	15179 Quarry RD /Oberlin, OH 44074	3222 MVA c/ Scene Safety; Light Extrication; Transport
14-0000414-000	12/11/2014	WSE	23121 SR 58	743 Smoke detector activation, no fire - unintentional
14-0000415-000	12/11/2014	VNW	West Herrick AVE & Union ST	3222 MVA c/ Scene Safety; Light Extrication; Transport
14-0000416-000	12/12/2014	VSW	225 Magyar ST	311 Medical assist, assist EMS crew
14-0000417-000	12/13/2014	PISW	46561 WHITNEY RD	311 Medical assist, assist EMS crew
14-0000418-000	12/15/2014	WNW	48480 SR 18	412 Gas leak (natural gas or LPG)
14-0000419-000	12/15/2014	VSE	523 South Main ST	411 Gasoline or other flammable liquid spill
14-0000420-000	12/16/2014	VNW	149 Sheila DR	412 Gas leak (natural gas or LPG)
14-0000421-000	12/17/2014	VNE	816 NORTH MAIN ST /H/L/SW	611 Dispatched & cancelled en route
14-0000422-000	12/17/2014	VSW	136 SOUTH MAIN ST /A/H/L/SC	311 Medical assist, assist EMS crew
14-0000423-000	12/18/2014	VSW	116 Wheeling AVE	622 No Incident found on arrival at dispatch address
14-0000424-000	12/18/2014	BSE	22726 Quarry RD	111 Building fire
14-0000425-000	12/19/2014	PESW	42109 SR 18	3222 MVA c/ Scene Safety; Light Extrication; Transport
14-0000426-000	12/20/2014	WSE	Hawley RD & Cemetery RD	3221 MVA c/ Scene Safety; No Transport
14-0000427-000	12/21/2014	PINE	44482 Kipton Nickle Plate RD /Oberlin, OH 44074	311 Medical assist, assist EMS crew
14-0000428-000	12/22/2014	VNE	755 INDUSTRIAL AVE /L	531 Smoke or odor removal
14-0000429-000	12/22/2014	OFD	134 North Main ST /Oberlin, OH 44074	611 Dispatched & cancelled en route
14-0000430-000	12/24/2014	VSW	233 Magyar ST	444 Power line down
14-0000431-000	12/26/2014	HNW	SR 58 & Bursley RD	3223 MVA c/ Scene Safety; Heavy Extrication; Transport
14-0000432-000	12/26/2014	PINW	SR 20 & Quarry RD /Oberlin, OH 44074	3221 MVA c/ Scene Safety; No Transport
14-0000433-000	12/26/2014	VNE	SR 58 & Peck Wadsworth RD	3221 MVA c/ Scene Safety; No Transport
14-0000434-000	12/26/2014	HNW	47870 SR 162	311 Medical assist, assist EMS crew
14-0000435-000	12/26/2014	VNW	510 West Herrick AVE	412 Gas leak (natural gas or LPG)
14-0000436-000	12/28/2014	PENE	38599 SR 18 /LITCHFIELD, OH 44253	424 Carbon monoxide incident
14-0000437-000	12/28/2014	PINE	16398 Hawley RD /Oberlin, OH 44074	311 Medical assist, assist EMS crew
14-0000438-000	12/29/2014	WSW	23000 FAIRGROUNDS RD	311A Medical assist, Lifeflight Landing Zone
14-0000439-000	12/30/2014	WSW	22069 FAIR GROUNDS RD /P.O. BOX 7679/Oberlin, OH 44074	743 Smoke detector activation, no fire - unintentional

Total Incident Count 439

Section V: Training

Technical Rescue Recap

By Lieutenant Greg Frenk

The Wellington Fire District is called on to provide rescues other than those related to fires or accidents. We as a fire and rescue service must be prepared for many types of calls such as high angle rope rescue, water rescues like ice, diving and swift water, confined space rescues, trench rescues, and hazardous material rescues.

In 2014 WFD held a Haz-Mat tech class at our facility that we opened up to our surrounding areas. We trained 7 of our personnel to the technician level bringing our number of tech level personnel up to 8. A.C. Bill Brown, Lt. Greg Frenk, Lt. Ethan Little, FF Tim Polen, FF Steve Higgins, FF Darrin Lewis, FF Dave Roser, and FF Ken Knapp. Lt. Ethan Little is our department representative on the Lorain County Haz-Mat team. He attends monthly training and is our department advisor on these incidents.



We have two personnel trained in confined space rescue Lt. Greg Frenk and FF John Clawson. Confined space rescue is an often overlooked discipline. We have a lot of agricultural silos and grain bins that present very dangerous environments and are considered confined spaces. Lorain County has a USAR team that is trained and can be called on for help at any special rescues like confined space rescue, trench rescue, rope rescue and urban search rescue.

John Clawson joined the County USAR team in 2014 as our department representative. Due to his busy work schedule though, John has had to resign from the team. John was very impressed with the training these men and women did and enjoyed his time on the team.

Gordy Lent has continued to lead our department water rescue teams. We have been undergoing some changes in our team members and their abilities. WFD has five divers at various levels of training. A.C. Troy Pitts, Lt. Greg Frenk, Lt. Ethan Little, FF Gordy Lent and FF Mike Barlow are our divers. We have four rescue divers, A.C. Pitts, Lt. Frenk, FF Lent and FF Barlow who got his certification this past September, and two certified ice divers, Lt. Frenk and FF Lent. In February 2014 Lt. Frenk got certified in ice diving. We also have two very dedicated and competent dive tenders FF John Clawson and FF Dave Roser, and two tenders in training FF Dave Crawford and FF Tyler Honoshofsky.

2014 saw multiple dive rescue calls for our personnel. We responded to a car in a pond off of route 480 with unknown occupants. We responded to a man who fell into the reservoir while fishing. At this call we had two of our newer FF's Jason Dumke and Ken Knapp respond first on scene and between the two of them get the man out by themselves within 7 minutes and begin CPR. They did an amazing job and will be awarded honors for their heroism. We responded to Avon for a missing man and helped recover his body in a pond. We were called on to set up the sonar unit to look for a missing man in Lorain. We also try to help our residents when possible. A.C. Troy Pitts led an effort to recover lost building supplies in a pond due to high wind at the Ziegler's farm pond. He also located a dry hydrant at Waldens pond on New London Eastern Rd. to see if we can fix it for her.

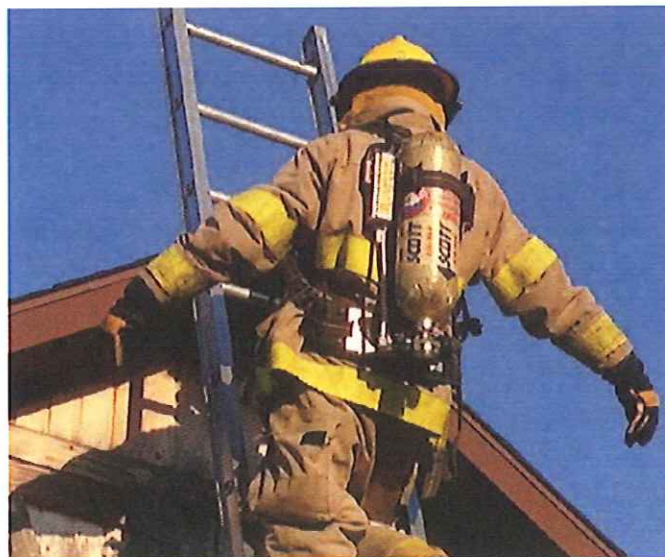
The WFD has 18 trained ice rescue personnel with Gordy Lent becoming a certified instructor.

The WFD has six swift water ops personnel, A.C. Bill Brown, Lt. Troy Pitts, Lt. Chad Regal, FF Bryan Hamer, FF Dan Shinsky, FF Steve Higgins and two swift water techs, Lt. Frenk and FF Lent.

2014 saw three swift water calls for our firefighters. One call was in North Ridgeville during heavy flooding where evacuations were needed. The second was in Carlisle Township for two males floating down a river appearing distressed. The third was in our district for a young girl trapped in high water on a Jones road bridge.

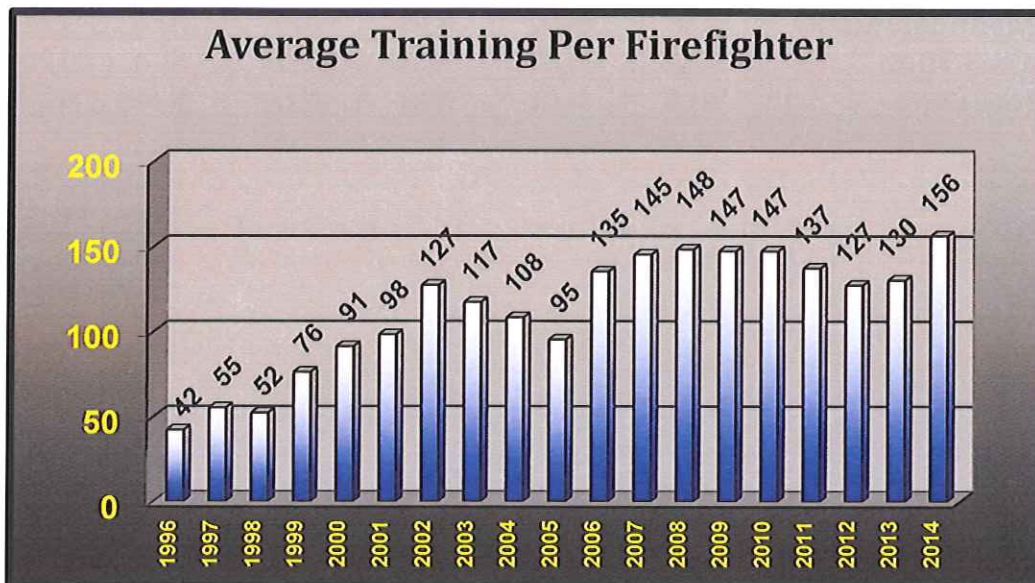
The WFD has three trained rope rescue ops personnel, Lt. Troy Pitts, Lt. Ethan Little, and FF Dan Shinsky and 5 rope rescue technicians, A.C. Bill Brown, Lt Greg Frenk, FF Gordy Lent, FF John Clawson, and FF Steve Higgins. There was one call at Findley State Park where someone had fallen down and gotten hurt at the bottom of their lake spillway and needed rescued.

The time, training, and dedication of these firefighters is greatly appreciated by WFD. These skills are not used often but are very specific in nature and require constant training to stay proficient. Beyond benefitting just the WFD many of these men are part of and enhance Lorain counties Dive Team, Haz-Mat Team, Swift Water Team, and USAR Team.



Wellington Fire District Training and Activity Summary

	2006	2007	2008	2009	2010	2011	2012	2013	2014
FF's Trained:	36	34	33	34	33	32	30	35	31
Avg. Training Per FF:	135	145	148	147	147	137	127	130	156
FF's With >40 Hours:	25	30	26	28	29	25	27	32	30
FF's With >80 Hours:	20	22	19	23	26	23	22	25	27
FF's With >100 Hours:	20	19	19	18	23	22	19	24	22
FF's With >120 Hours:	17	19	17	17	21	22	16	20	17
FF's With >200 Hours:	11	9	10	10	8	7	4	7	11
FF's With >300 Hours:	2	2	4	5	1	2	1	0	0
Total Training Hours:	4,860	4,945	4,902	4,982	4,857	4,368	3,822	4,542	4,846

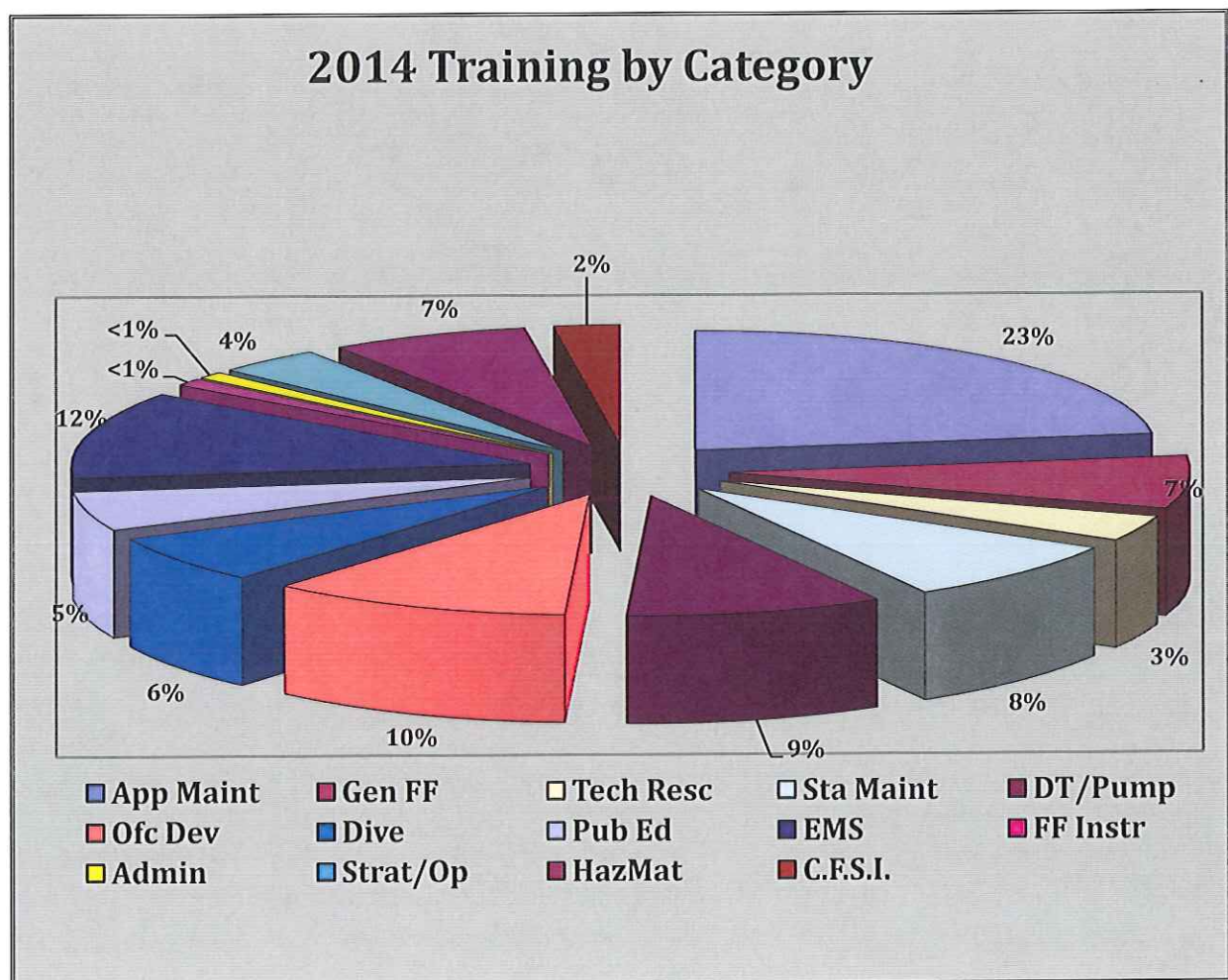


**Wellington Fire District
2014 Training Analysis by Staff**

Staff Member	2008	2009	2010	2011	2012	2013	2014
Chief Mike Wetherbee	438	380.75	290.75	271.25	301	272.75	207
Assistant Chief Jim Clark	227.50	225.75	188.25	227.50	169.75	123	111.50
Assistant Chief Bill Brown	305.25	206.25	210.50	193.25	209	220.75	184
Lieutenant Troy Pitts	319	303.50	276.25	200.50	204.75	238	288
Lieutenant Greg Frenk	193	186.25	293.25	324.75	195.75	207.5	293
Lieutenant Chad Regal	132	164.75	179.25	188.50	165.75	199	225.50
Firefighter Gordy Lent	168	160	178.75	120.75	94	120.25	136.25
Firefighter Scott Regal	199	183.75	187.25	159.50	144.25	139.25	178.25
Firefighter Dave Crawford	66.50	95.25	75.75	62.25	58	259	230.25
Firefighter Frank Marley	296	317.50	149.75	133.75	75.50	25	0
Firefighter Casey Moore	34.75	20.50	16.50	18	24	19.75	10
Firefighter John Clawson	100	51.25	72.50	62.25	80.75	71.25	58.25
Firefighter Derick Oswald	174.25	189.75	125.25	104.25	107.75	76.25	58.50
Firefighter Dan Shinsky	222	205.75	181.75	151	134.25	135.25	128.25
Firefighter Bryan Hamer	117.50	98.50	130	122.25	88.50	84	88.50
Firefighter Tim Polen	142.75	189	95	84	137.25	41.75	53
Firefighter Ethan Little	358	314.25	320.25	322	266.75	231.5	253.50
Firefighter Steve Higgins	75.25	26.50	13.25	11.50	11.50	54.75	96.50
Firefighter Ed Thorn	183.50	194.75	132.50	179.25	111.75	106.75	115.75
Firefighter Darin Lewis	214.25	247.75	209	164	156.50	167.25	190
Firefighter Dave Roser	N/A	89.50	153.75	160.75	117.75	159	270.25
Firefighter Rich Smith	N/A	10.75	144	145	38.25	50.5	98
Firefighter Dusty Reynolds	N/A	96.75	201.25	206	125	105.75	141.25
Firefighter Mike Barlow	N/A	N/A	129	191	220.50	194	248
Firefighter Ken Knapp	N/A	N/A	N/A	N/A	68.50	253	215.75
Firefighter Mike Standen	N/A	N/A	N/A	N/A	122.25	104	102.50
Firefighter Tim Standen	N/A	N/A	N/A	N/A	121	111.5	114.25
Firefighter Jason Dumke	N/A	N/A	N/A	N/A	N/A	123.25	95.75
Firefighter Melissa Fuquay	N/A	N/A	N/A	N/A	N/A	126.75	147.25
Firefighter Tyler Honoshofsky	N/A	N/A	N/A	N/A	N/A	134.75	221
Firefighter Justen Tripp	N/A	N/A	N/A	N/A	N/A	126.25	67.25
Firefighter Steve Garn	N/A	N/A	N/A	N/A	N/A	122.75	219

Wellington Fire District 2014 Training by Category

Category	2009	2010	2011	2012	2013	2014
Apparatus Maintenance	1,251.50	1,104	1,132.75	914.50	967.75	1,101.25
General Firefighting (Other)	520	1,058.50	822.50	755.50	965.25	335.75
Station Maintenance	483.50	437.75	379.25	388	416	394
Dive/Water Operations	465.50	420	270.75	289	379.5	311.25
Public Education/Dept. Pride	188.25	229	306.25	284	463.5	251.50
Officer Development	182.50	168.50	251.50	265.75	160	508.75
Driver's Training/Pump Operations	274	303.50	271.50	261	274.5	429
Technical Rescue	181	350	138.50	148	205.25	163.25
Hazardous Materials	106.75	81.75	28	124	24.5	331.50
Administrative Procedures	130.50	255.25	42.25	101.75	164.25	44
EMS	677.50	89	285	93	30.5	561.50
Strategic/Tactical Operations	98.50	89	142.50	73.75	192.5	174
Fire Instructor/Instruction	322.25	242.25	262	71.25	176.5	46
Certified Fire Safety Inspector	110	28.50	35.50	52.25	121.5	111



Wellington Fire District

Staff Training Analysis

Class Date Between {01/01/2014} And {12/31/2014}

Category	# Attended	Pct of Attended	Hours	Pct of Hours
MRB-3264 BARLOW, MIKE R				
AD01 Administrative Procedures	1	0.95 %	1.00	0.40 %
AD02 Fire Department Organization	1	0.95 %	1.00	0.40 %
AD03 Public Education	5	4.76 %	12.75	5.14 %
AD04 Station Maintenance	8	7.62 %	15.50	6.25 %
AP10 Apparatus Check Procedures	21	20.00 %	37.00	14.92 %
APPUMP Apparatus Pump Training	4	3.81 %	4.25	1.71 %
BC01 General Building Construction	1	0.95 %	2.00	0.81 %
BC20 Building Construction and Fire Behavior	1	0.95 %	2.50	1.01 %
CPAT Physical Agility Test	1	0.95 %	2.00	0.81 %
DT01 General Driver Training	11	10.48 %	10.50	4.23 %
EM01 Emergency Medical Services	1	0.95 %	0.50	0.20 %
EM14 EMS Scenarios	1	0.95 %	1.50	0.60 %
EMFR First Responder	11	10.48 %	44.00	17.74 %
FC40 Strategic and Tactical Operations	4	3.81 %	11.00	4.44 %
FDPR Fire Dept. Pride	2	1.90 %	3.50	1.41 %
FP02 Specialized Equipment	1	0.95 %	7.00	2.82 %
FV01 Basic Fire Investigation	1	0.95 %	6.00	2.42 %
FV20 Vehicle Extrication	1	0.95 %	2.00	0.81 %
FW01 Boat Operations	1	0.95 %	1.50	0.60 %
FW02 Dive Training	4	3.81 %	28.50	11.49 %
FW03 SCBA Training	2	1.90 %	4.00	1.61 %
FW04 Search & Rescue	1	0.95 %	2.00	0.81 %
FW05 Ladder Training	2	1.90 %	3.50	1.41 %
FW08 Hose Lays	1	0.95 %	2.00	0.81 %
FW11 Aerial Operations	3	2.86 %	5.75	2.32 %
FW12 Hydrant Training	1	0.95 %	3.50	1.41 %
FW13 Water Shuttle	1	0.95 %	2.50	1.01 %
FW14 Truck Maintenance	5	4.76 %	6.50	2.62 %
FW20 Rope Rescue-Awareness	1	0.95 %	1.50	0.60 %
HZ01 Hazardous Materials Overview	1	0.95 %	1.00	0.40 %
LCDT Lorain County Dive Team	5	4.76 %	19.75	7.96 %
SW1 Swiftwater Rescue 1 / Ops	1	0.95 %	2.00	0.81 %
Totals for Staff:	105		248.00	

WHB-3479 BROWN, WILLIAM H

AD01 Administrative Procedures	1	1.79 %	1.00	0.54 %
AD02 Fire Department Organization	8	14.29 %	12.00	6.52 %
AD03 Public Education	7	12.50 %	13.00	7.07 %
AD07 Fire Officer 2	1	1.79 %	40.00	21.74 %
BC01 General Building Construction	1	1.79 %	2.00	1.09 %
BC20 Building Construction and Fire Behavior	1	1.79 %	2.50	1.36 %
CPAT Physical Agility Test	1	1.79	2.00	1.09

Wellington Fire District

Staff Training Analysis

Class Date Between {01/01/2014} And {12/31/2014}

Category	# Attended	Pct of Attended	Hours	Pct of Hours
WHB-3479 BROWN, WILLIAM H				
DT01 General Driver Training	1	1.79 %	4.00	2.17 %
EM01 Emergency Medical Services	1	1.79 %	0.50	0.27 %
FC40 Strategic and Tactical Operations	3	5.36 %	5.00	2.72 %
FDPR Fire Dept. Pride	4	7.14 %	11.50	6.25 %
FI00 Fire Instruction Preparation	1	1.79 %	3.00	1.63 %
FI03 Fire Instruction	2	3.57 %	3.00	1.63 %
FIBOARD Fire Board Meeting	1	1.79 %	3.00	1.63 %
FP02 Specialized Equipment	1	1.79 %	4.00	2.17 %
FW01 Boat Operations	1	1.79 %	1.50	0.82 %
FW03 SCBA Training	2	3.57 %	4.00	2.17 %
FW04 Search & Rescue	1	1.79 %	2.00	1.09 %
FW05 Ladder Training	1	1.79 %	2.00	1.09 %
FW08 Hose Lays	1	1.79 %	2.00	1.09 %
FW11 Aerial Operations	1	1.79 %	1.50	0.82 %
FW13 Water Shuttle	1	1.79 %	2.50	1.36 %
HZ01 Hazardous Materials Overview	1	1.79 %	1.00	0.54 %
HZ03 Hazmat Technician	5	8.93 %	40.00	21.74 %
OFD Officer Leadership Development	1	1.79 %	3.00	1.63 %
OFF O1 Officers Training	6	10.71 %	16.00	8.70 %
SW1 Swiftwater Rescue 1 / Ops	1	1.79 %	2.00	1.09 %
Totals for Staff:	56		184.00	

JEC-6142 CLARK, JAMES E

AD01 Administrative Procedures	1	1.56 %	1.00	0.90 %
AD02 Fire Department Organization	3	4.69 %	4.00	3.59 %
AD03 Public Education	1	1.56 %	2.50	2.24 %
AD04 Station Maintenance	10	15.63 %	16.50	14.80 %
AP02 Hose Testing	1	1.56 %	1.50	1.35 %
AP10 Apparatus Check Procedures	17	26.56 %	27.00	24.22 %
BC01 General Building Construction	1	1.56 %	2.00	1.79 %
BC20 Building Construction and Fire Behavior	1	1.56 %	2.50	2.24 %
DT01 General Driver Training	2	3.13 %	3.00	2.69 %
EM01 Emergency Medical Services	1	1.56 %	0.50	0.45 %
FC40 Strategic and Tactical Operations	3	4.69 %	4.00	3.59 %
FDPR Fire Dept. Pride	1	1.56 %	1.50	1.35 %
FIBOARD Fire Board Meeting	1	1.56 %	3.00	2.69 %
FW01 Boat Operations	1	1.56 %	1.50	1.35 %
FW05 Ladder Training	1	1.56 %	1.00	0.90 %
FW11 Aerial Operations	2	3.13 %	4.00	3.59 %
FW12 Hydrant Training	1	1.56 %	1.50	1.35 %
FW14 Truck Maintenance	7	10.94 %	13.00	11.66 %
HZ01 Hazardous Materials Overview	1	1.56	1.00	0.90

Wellington Fire District

Staff Training Analysis

Class Date Between {01/01/2014} And {12/31/2014}

Category	# Attended	Pct of Attended	Hours	Pct of Hours
JEC-6142 CLARK, JAMES E				
OFD Officer Leadership Development	1	1.56 %	3.00	2.69 %
OFF O1 Officers Training	6	9.38 %	15.50	13.90 %
SW1 Swiftwater Rescue 1 / Ops	1	1.56 %	2.00	1.79 %
Totals for Staff:	64		111.50	
JRC-8915 CLAWSON, JOHN R				
AD01 Administrative Procedures	1	4.76 %	1.00	1.72 %
AD04 Station Maintenance	1	4.76 %	2.00	3.43 %
APPUMP Apparatus Pump Training	2	9.52 %	4.00	6.87 %
BC01 General Building Construction	1	4.76 %	2.00	3.43 %
BC20 Building Construction and Fire Behavior	1	4.76 %	2.50	4.29 %
CF Confined Space Training	1	4.76 %	5.50	9.44 %
DT01 General Driver Training	1	4.76 %	2.00	3.43 %
EM01 Emergency Medical Services	1	4.76 %	0.50	0.86 %
FC40 Strategic and Tactical Operations	2	9.52 %	2.50	4.29 %
FDPR Fire Dept. Pride	2	9.52 %	2.50	4.29 %
FW03 SCBA Training	1	4.76 %	1.50	2.58 %
FW08 Hose Lays	1	4.76 %	2.00	3.43 %
LCDT Lorain County Dive Team	2	9.52 %	10.50	18.03 %
LCSW Lorain County Swiftwater Team	2	9.52 %	9.75	16.74 %
STRCOLL Structural Collapse	1	4.76 %	8.00	13.73 %
TR01 Trench Rescue	1	4.76 %	2.00	3.43 %
Totals for Staff:	21		58.25	
DRC-8028 CRAWFORD, DAVID R				
AD02 Fire Department Organization	1	0.90 %	1.00	0.43 %
AD04 Station Maintenance	11	9.91 %	13.00	5.65 %
AP02 Hose Testing	4	3.60 %	10.25	4.45 %
AP10 Apparatus Check Procedures	27	24.32 %	62.00	26.93 %
APPUMP Apparatus Pump Training	7	6.31 %	12.00	5.21 %
BC01 General Building Construction	1	0.90 %	2.00	0.87 %
BC20 Building Construction and Fire Behavior	1	0.90 %	2.50	1.09 %
DT01 General Driver Training	13	11.71 %	17.50	7.60 %
EM01 Emergency Medical Services	1	0.90 %	0.50	0.22 %
EM13 Specialized Equipment	1	0.90 %	1.50	0.65 %
EM14 EMS Scenarios	1	0.90 %	1.50	0.65 %
EMFR First Responder	8	7.21 %	26.00	11.29 %
FC40 Strategic and Tactical Operations	3	2.70 %	4.00	1.74 %
FDPR Fire Dept. Pride	2	1.80 %	3.50	1.52 %
FV20 Vehicle Extrication	1	0.90 %	2.00	0.87 %
FW01 Boat Operations	1	0.90 %	1.50	0.65 %

Wellington Fire District

Staff Training Analysis

Class Date Between {01/01/2014} And {12/31/2014}

Category	# Attended	Pct of Attended	Hours	Pct of Hours
DRC-8028 CRAWFORD, DAVID R				
FW02 Dive Training	1	0.90 %	4.50	1.95 %
FW08 Hose Lays	1	0.90 %	2.00	0.87 %
FW10 Hydrant Testing	1	0.90 %	3.00	1.30 %
FW11 Aerial Operations	1	0.90 %	1.00	0.43 %
FW12 Hydrant Training	1	0.90 %	3.00	1.30 %
FW13 Water Shuttle	1	0.90 %	2.50	1.09 %
FW14 Truck Maintenance	17	15.32 %	37.00	16.07 %
HZ01 Hazardous Materials Overview	1	0.90 %	1.00	0.43 %
LCDT Lorain County Dive Team	2	1.80 %	10.50	4.56 %
SPEC Special Duty	1	0.90 %	3.00	1.30 %
SW1 Swiftwater Rescue 1 / Ops	1	0.90 %	2.00	0.87 %
Totals for Staff:	111		230.25	

JAD-7456 DUMKE, JASON

AD01 Administrative Procedures	1	1.72 %	1.00	1.04 %
AD02 Fire Department Organization	1	1.72 %	1.00	1.04 %
AD04 Station Maintenance	10	17.24 %	15.00	15.67 %
AP02 Hose Testing	1	1.72 %	2.00	2.09 %
AP10 Apparatus Check Procedures	16	27.59 %	31.00	32.38 %
DT01 General Driver Training	7	12.07 %	8.00	8.36 %
EM01 Emergency Medical Services	1	1.72 %	0.50	0.52 %
EM13 Specialized Equipment	1	1.72 %	1.50	1.57 %
FC40 Strategic and Tactical Operations	2	3.45 %	3.50	3.66 %
FDPR Fire Dept. Pride	1	1.72 %	1.50	1.57 %
FW03 SCBA Training	2	3.45 %	4.00	4.18 %
FW04 Search & Rescue	1	1.72 %	2.00	2.09 %
FW05 Ladder Training	1	1.72 %	2.00	2.09 %
FW08 Hose Lays	1	1.72 %	2.00	2.09 %
FW10 Hydrant Testing	1	1.72 %	3.00	3.13 %
FW11 Aerial Operations	1	1.72 %	1.25	1.31 %
FW12 Hydrant Training	2	3.45 %	4.50	4.70 %
FW14 Truck Maintenance	6	10.34 %	9.00	9.40 %
HZ01 Hazardous Materials Overview	1	1.72 %	1.00	1.04 %
SW1 Swiftwater Rescue 1 / Ops	1	1.72 %	2.00	2.09 %
Totals for Staff:	58		95.75	

GJF-7676 FRENK, GREGORY J

AD01 Administrative Procedures	1	1.15 %	1.00	0.34 %
AD02 Fire Department Organization	1	1.15 %	1.50	0.51 %
AD04 Station Maintenance	15	17.24 %	14.50	4.95 %
AD06 Fire Officer 1	1	1.15 %	40.00	13.65 %

Wellington Fire District

Staff Training Analysis

Class Date Between {01/01/2014} And {12/31/2014}

Category	# Attended	Pct of Attended	Hours	Pct of Hours
GJF-7676 FRENK, GREGORY J				
AD07 Fire Officer 2	1	1.15 %	40.00	13.65 %
AP10 Apparatus Check Procedures	15	17.24 %	25.00	8.53 %
APPUMP Apparatus Pump Training	2	2.30 %	1.50	0.51 %
BC01 General Building Construction	1	1.15 %	2.00	0.68 %
BC20 Building Construction and Fire Behavior	1	1.15 %	2.50	0.85 %
CPAT Physical Agility Test	1	1.15 %	2.00	0.68 %
DT01 General Driver Training	3	3.45 %	3.00	1.02 %
EM13 Specialized Equipment	1	1.15 %	1.50	0.51 %
FC40 Strategic and Tactical Operations	3	3.45 %	5.00	1.71 %
FDPR Fire Dept. Pride	1	1.15 %	1.50	0.51 %
FI03 Fire Instruction	2	2.30 %	4.50	1.54 %
FIBOARD Fire Board Meeting	1	1.15 %	3.00	1.02 %
FW001 Rope Equipment Maintenance	1	1.15 %	2.00	0.68 %
FW01 Boat Operations	1	1.15 %	1.50	0.51 %
FW02 Dive Training	1	1.15 %	4.50	1.54 %
FW03 SCBA Training	2	2.30 %	4.00	1.37 %
FW04 Search & Rescue	1	1.15 %	2.00	0.68 %
FW05 Ladder Training	2	2.30 %	2.50	0.85 %
FW08 Hose Lays	1	1.15 %	2.00	0.68 %
FW11 Aerial Operations	1	1.15 %	1.50	0.51 %
FW13 Water Shuttle	1	1.15 %	2.50	0.85 %
FW14 Truck Maintenance	1	1.15 %	1.00	0.34 %
HZ01 Hazardous Materials Overview	1	1.15 %	1.00	0.34 %
HZ03 Hazmat Technician	5	5.75 %	40.00	13.65 %
ICE-D Ice Diving Certification	1	1.15 %	20.00	6.83 %
LCDT Lorain County Dive Team	7	8.05 %	29.00	9.90 %
LCSW Lorain County Swiftwater Team	2	2.30 %	8.00	2.73 %
OFD Officer Leadership Development	1	1.15 %	3.00	1.02 %
OFF O1 Officers Training	7	8.05 %	18.00	6.14 %
SW1 Swiftwater Rescue 1 / Ops	1	1.15 %	2.00	0.68 %
Totals for Staff:	87		293.00	

MAF-9295 FUQUAY, MELISSA

AD01 Administrative Procedures	1	1.45 %	1.00	0.68 %
AD03 Public Education	5	7.25 %	16.75	11.38 %
AD04 Station Maintenance	7	10.14 %	9.00	6.11 %
AP02 Hose Testing	3	4.35 %	7.25	4.92 %
AP10 Apparatus Check Procedures	15	21.74 %	32.00	21.73 %
APPUMP Apparatus Pump Training	3	4.35 %	4.50	3.06 %
BC01 General Building Construction	1	1.45 %	2.00	1.36 %
BC20 Building Construction and Fire Behavior	1	1.45 %	2.50	1.70 %
CPAT Physical Agility Test	1	1.45	2.00	1.36

Wellington Fire District

Staff Training Analysis

Class Date Between {01/01/2014} And {12/31/2014}

Category	# Attended	Pct of Attended	Hours	Pct of Hours
MAF-9295 FUQUAY, MELISSA				
DT01 General Driver Training	4	5.80 %	3.75	2.55 %
EM01 Emergency Medical Services	1	1.45 %	0.50	0.34 %
EMFR First Responder	10	14.49 %	40.00	27.16 %
FC40 Strategic and Tactical Operations	3	4.35 %	5.00	3.40 %
FDPR Fire Dept. Pride	1	1.45 %	2.00	1.36 %
FW01 Boat Operations	1	1.45 %	1.50	1.02 %
FW03 SCBA Training	2	2.90 %	4.00	2.72 %
FW04 Search & Rescue	1	1.45 %	2.00	1.36 %
FW05 Ladder Training	1	1.45 %	2.00	1.36 %
FW11 Aerial Operations	3	4.35 %	3.00	2.04 %
FW13 Water Shuttle	1	1.45 %	2.50	1.70 %
FW14 Truck Maintenance	3	4.35 %	3.00	2.04 %
HZ01 Hazardous Materials Overview	1	1.45 %	1.00	0.68 %
Totals for Staff:	69		147.25	

SMG-1737 GARN, STEVE

AD01 Administrative Procedures	1	1.22 %	1.00	0.46 %
AD02 Fire Department Organization	1	1.22 %	1.00	0.46 %
AD03 Public Education	3	3.66 %	8.50	3.88 %
AD04 Station Maintenance	7	8.54 %	13.00	5.94 %
AP02 Hose Testing	1	1.22 %	3.00	1.37 %
AP10 Apparatus Check Procedures	11	13.41 %	19.50	8.90 %
APPUMP Apparatus Pump Training	1	1.22 %	2.00	0.91 %
BC01 General Building Construction	1	1.22 %	2.00	0.91 %
CPAT Physical Agility Test	1	1.22 %	2.00	0.91 %
DT01 General Driver Training	3	3.66 %	7.00	3.20 %
EM01 Emergency Medical Services	1	1.22 %	0.50	0.23 %
EMFR First Responder	10	12.20 %	40.00	18.26 %
EMT-B EMT Basic Training	26	31.71 %	91.50	41.78 %
FC40 Strategic and Tactical Operations	3	3.66 %	5.00	2.28 %
FDPR Fire Dept. Pride	1	1.22 %	2.00	0.91 %
FW01 Boat Operations	1	1.22 %	1.50	0.68 %
FW03 SCBA Training	1	1.22 %	1.50	0.68 %
FW04 Search & Rescue	1	1.22 %	2.00	0.91 %
FW08 Hose Lays	1	1.22 %	2.00	0.91 %
FW11 Aerial Operations	2	2.44 %	4.50	2.05 %
FW13 Water Shuttle	1	1.22 %	2.50	1.14 %
FW14 Truck Maintenance	2	2.44 %	4.00	1.83 %
HZ01 Hazardous Materials Overview	1	1.22 %	1.00	0.46 %
SW1 Swiftwater Rescue 1 / Ops	1	1.22 %	2.00	0.91 %

Wellington Fire District

Staff Training Analysis

Class Date Between {01/01/2014} And {12/31/2014}

Category	# Attended	Pct of Attended	Hours	Pct of Hours
SMG-1737 GARN, STEVE				
Totals for Staff:	82		219.00	
BMH-1897 HAMER, BRYAN M				
AD01 Administrative Procedures	1	2.00 %	1.00	1.13 %
AD03 Public Education	3	6.00 %	8.00	9.04 %
AD04 Station Maintenance	7	14.00 %	11.00	12.43 %
AP02 Hose Testing	2	4.00 %	5.50	6.21 %
AP10 Apparatus Check Procedures	16	32.00 %	27.00	30.51 %
BC01 General Building Construction	1	2.00 %	2.00	2.26 %
BC20 Building Construction and Fire Behavior	1	2.00 %	2.50	2.82 %
CPAT Physical Agility Test	1	2.00 %	2.00	2.26 %
DT01 General Driver Training	2	4.00 %	4.00	4.52 %
EM01 Emergency Medical Services	1	2.00 %	0.50	0.56 %
EMFR First Responder	1	2.00 %	2.00	2.26 %
FC40 Strategic and Tactical Operations	3	6.00 %	5.00	5.65 %
FDPR Fire Dept. Pride	2	4.00 %	3.50	3.95 %
FV20 Vehicle Extrication	1	2.00 %	2.00	2.26 %
FW03 SCBA Training	2	4.00 %	4.00	4.52 %
FW11 Aerial Operations	2	4.00 %	3.50	3.95 %
FW14 Truck Maintenance	2	4.00 %	2.50	2.82 %
FW20 Rope Rescue-Awareness	1	2.00 %	1.50	1.69 %
HZ01 Hazardous Materials Overview	1	2.00 %	1.00	1.13 %
Totals for Staff:	50		88.50	
SJH-3278 HIGGINS, STEPHEN				
AD02 Fire Department Organization	1	3.13 %	1.00	1.04 %
AD03 Public Education	1	3.13 %	2.50	2.59 %
AP10 Apparatus Check Procedures	6	18.75 %	14.00	14.51 %
APPUMP Apparatus Pump Training	1	3.13 %	1.00	1.04 %
BC01 General Building Construction	1	3.13 %	2.00	2.07 %
DT01 General Driver Training	5	15.63 %	6.00	6.22 %
EM01 Emergency Medical Services	1	3.13 %	0.50	0.52 %
FC40 Strategic and Tactical Operations	3	9.38 %	9.50	9.84 %
FDPR Fire Dept. Pride	1	3.13 %	1.50	1.55 %
FV01 Basic Fire Investigation	1	3.13 %	6.00	6.22 %
FW02 Dive Training	1	3.13 %	4.50	4.66 %
FW11 Aerial Operations	1	3.13 %	1.50	1.55 %
FW13 Water Shuttle	1	3.13 %	2.50	2.59 %
FW14 Truck Maintenance	2	6.25 %	2.00	2.07 %
HZ03 Hazmat Technician	5	15.63 %	40.00	41.45 %
SW1 Swiftwater Rescue 1 / Ops	1	3.13 %	2.00	2.07 %

Wellington Fire District

Staff Training Analysis

Class Date Between {01/01/2014} And {12/31/2014}

Category	# Attended	Pct of Attended	Hours	Pct of Hours
SJH-3278 HIGGINS, STEPHEN				
Totals for Staff:				
	32		96.50	
TAH-1334 HONOSHOFSKY, TYLER				
AD01 Administrative Procedures	1	0.88 %	1.00	0.45 %
AD02 Fire Department Organization	1	0.88 %	1.00	0.45 %
AD03 Public Education	1	0.88 %	2.50	1.13 %
AD04 Station Maintenance	13	11.50 %	24.50	11.09 %
AP02 Hose Testing	2	1.77 %	5.75	2.60 %
AP10 Apparatus Check Procedures	31	27.43 %	53.25	24.10 %
APPUMP Apparatus Pump Training	5	4.42 %	4.00	1.81 %
BC01 General Building Construction	1	0.88 %	2.00	0.90 %
CPAT Physical Agility Test	1	0.88 %	2.00	0.90 %
DT01 General Driver Training	10	8.85 %	10.75	4.86 %
EM01 Emergency Medical Services	1	0.88 %	0.50	0.23 %
EM13 Specialized Equipment	1	0.88 %	1.50	0.68 %
EMFR First Responder	11	9.73 %	44.00	19.91 %
FC40 Strategic and Tactical Operations	3	2.65 %	5.00	2.26 %
FDPR Fire Dept. Pride	3	2.65 %	5.00	2.26 %
FP02 Specialized Equipment	1	0.88 %	7.00	3.17 %
FV20 Vehicle Extrication	1	0.88 %	2.00	0.90 %
FW01 Boat Operations	1	0.88 %	1.50	0.68 %
FW03 SCBA Training	2	1.77 %	4.00	1.81 %
FW04 Search & Rescue	1	0.88 %	2.00	0.90 %
FW05 Ladder Training	2	1.77 %	3.50	1.58 %
FW08 Hose Lays	1	0.88 %	2.00	0.90 %
FW11 Aerial Operations	2	1.77 %	2.00	0.90 %
FW12 Hydrant Training	1	0.88 %	2.00	0.90 %
FW13 Water Shuttle	1	0.88 %	2.50	1.13 %
FW14 Truck Maintenance	9	7.96 %	10.00	4.52 %
FW20 Rope Rescue-Awareness	1	0.88 %	1.50	0.68 %
HZ01 Hazardous Materials Overview	1	0.88 %	1.00	0.45 %
LCDT Lorain County Dive Team	3	2.65 %	15.25	6.90 %
SW1 Swiftwater Rescue 1 / Ops	1	0.88 %	2.00	0.90 %
Totals for Staff:				
	113		221.00	
KCK-9461 KNAPP, KENNETH C.				
AD02 Fire Department Organization	1	1.28 %	1.00	0.46 %
AD03 Public Education	2	2.56 %	5.00	2.32 %
AD04 Station Maintenance	6	7.69 %	13.00	6.03 %
AP02 Hose Testing	2	2.56 %	5.00	2.32 %
AP10 Apparatus Check Procedures	15	19.23 %	28.50	13.21 %

Wellington Fire District

Staff Training Analysis

Class Date Between {01/01/2014} And {12/31/2014}

Category	# Attended	Pct of Attended	Hours	Pct of Hours
KCK-9461 KNAPP, KENNETH C.				
BC01 General Building Construction	1	1.28 %	2.00	0.93 %
CPAT Physical Agility Test	1	1.28 %	2.00	0.93 %
DT01 General Driver Training	2	2.56 %	3.00	1.39 %
EM01 Emergency Medical Services	1	1.28 %	0.50	0.23 %
EM13 Specialized Equipment	1	1.28 %	1.50	0.70 %
EMFR First Responder	4	5.13 %	14.00	6.49 %
FC40 Strategic and Tactical Operations	3	3.85 %	5.00	2.32 %
FDPR Fire Dept. Pride	1	1.28 %	2.00	0.93 %
FF1 Firefighter 1 Skills	14	17.95 %	62.00	28.74 %
FW001 Rope Equipment Maintenance	1	1.28 %	1.00	0.46 %
FW01 Boat Operations	1	1.28 %	1.50	0.70 %
FW02 Dive Training	1	1.28 %	4.00	1.85 %
FW03 SCBA Training	2	2.56 %	4.00	1.85 %
FW04 Search & Rescue	1	1.28 %	2.00	0.93 %
FW05 Ladder Training	1	1.28 %	2.00	0.93 %
FW08 Hose Lays	1	1.28 %	2.00	0.93 %
FW11 Aerial Operations	2	2.56 %	2.75	1.27 %
FW13 Water Shuttle	1	1.28 %	2.50	1.16 %
FW14 Truck Maintenance	6	7.69 %	6.50	3.01 %
HZ01 Hazardous Materials Overview	1	1.28 %	1.00	0.46 %
HZ03 Hazmat Technician	5	6.41 %	40.00	18.54 %
SW1 Swiftwater Rescue 1 / Ops	1	1.28 %	2.00	0.93 %

Totals for Staff:

78

215.75

GRL-2964 LENT, GORDON R

AD01 Administrative Procedures	1	2.00 %	1.00	0.73 %
AD02 Fire Department Organization	1	2.00 %	1.00	0.73 %
AD03 Public Education	1	2.00 %	4.00	2.94 %
AD04 Station Maintenance	1	2.00 %	2.00	1.47 %
AP10 Apparatus Check Procedures	2	4.00 %	4.00	2.94 %
APPUMP Apparatus Pump Training	2	4.00 %	4.00	2.94 %
BC01 General Building Construction	1	2.00 %	2.00	1.47 %
BC20 Building Construction and Fire Behavior	1	2.00 %	2.50	1.83 %
CPAT Physical Agility Test	1	2.00 %	2.00	1.47 %
DT01 General Driver Training	2	4.00 %	3.00	2.20 %
EM01 Emergency Medical Services	1	2.00 %	0.50	0.37 %
EM13 Specialized Equipment	1	2.00 %	1.50	1.10 %
EMFR First Responder	8	16.00 %	26.00	19.08 %
FC40 Strategic and Tactical Operations	2	4.00 %	2.50	1.83 %
FDPR Fire Dept. Pride	2	4.00 %	3.50	2.57 %
FI03 Fire Instruction	1	2.00 %	2.00	1.47 %
FW001 Rope Equipment Maintenance	1	2.00	1.00	0.73

Wellington Fire District

Staff Training Analysis

Class Date Between {01/01/2014} And {12/31/2014}

Category	# Attended	Pct of Attended	Hours	Pct of Hours
GRL-2964 LENT, GORDON R				
FW01 Boat Operations	1	2.00 %	1.50	1.10 %
FW02 Dive Training	1	2.00 %	4.50	3.30 %
FW03 SCBA Training	1	2.00 %	1.50	1.10 %
FW08 Hose Lays	1	2.00 %	2.00	1.47 %
FW11 Aerial Operations	2	4.00 %	3.50	2.57 %
FW13 Water Shuttle	1	2.00 %	2.50	1.83 %
HZ01 Hazardous Materials Overview	2	4.00 %	6.00	4.40 %
LCDT Lorain County Dive Team	8	16.00 %	35.50	26.06 %
LCSW Lorain County Swiftwater Team	3	6.00 %	14.75	10.83 %
SW1 Swiftwater Rescue 1 / Ops	1	2.00 %	2.00	1.47 %
Totals for Staff:	50		136.25	
DAL-2066 LEWIS, DARIN				
AD02 Fire Department Organization	1	1.15 %	1.00	0.53 %
AD03 Public Education	2	2.30 %	3.50	1.84 %
AD04 Station Maintenance	16	18.39 %	26.50	13.95 %
AP02 Hose Testing	2	2.30 %	4.50	2.37 %
AP10 Apparatus Check Procedures	27	31.03 %	50.00	26.32 %
APPUMP Apparatus Pump Training	3	3.45 %	6.00	3.16 %
BC01 General Building Construction	1	1.15 %	2.00	1.05 %
BC20 Building Construction and Fire Behavior	1	1.15 %	2.50	1.32 %
CPAT Physical Agility Test	1	1.15 %	2.00	1.05 %
DT01 General Driver Training	3	3.45 %	4.00	2.11 %
EM01 Emergency Medical Services	1	1.15 %	0.50	0.26 %
FC40 Strategic and Tactical Operations	1	1.15 %	2.50	1.32 %
FDPR Fire Dept. Pride	2	2.30 %	3.50	1.84 %
FW04 Search & Rescue	1	1.15 %	2.00	1.05 %
FW05 Ladder Training	1	1.15 %	1.00	0.53 %
FW11 Aerial Operations	1	1.15 %	2.00	1.05 %
FW13 Water Shuttle	1	1.15 %	2.50	1.32 %
FW14 Truck Maintenance	14	16.09 %	25.00	13.16 %
HZ01 Hazardous Materials Overview	1	1.15 %	1.00	0.53 %
HZ03 Hazmat Technician	5	5.75 %	40.00	21.05 %
LCDT Lorain County Dive Team	1	1.15 %	6.00	3.16 %
SW1 Swiftwater Rescue 1 / Ops	1	1.15 %	2.00	1.05 %
Totals for Staff:	87		190.00	
EDL-0642 LITTLE, ETHAN D				
AD01 Administrative Procedures	1	0.75 %	1.00	0.39 %
AD02 Fire Department Organization	1	0.75 %	1.00	0.39 %
AD03 Public Education	2	1.49 %	4.25	1.68 %

Wellington Fire District

Staff Training Analysis

Class Date Between {01/01/2014} And {12/31/2014}

Category	# Attended	Pct of Attended	Hours	Pct of Hours
EDL-0642 LITTLE, ETHAN D				
AD04 Station Maintenance	23	17.16 %	28.00	11.05 %
AP02 Hose Testing	1	0.75 %	2.00	0.79 %
AP10 Apparatus Check Procedures	38	28.36 %	75.00	29.59 %
APPUMP Apparatus Pump Training	6	4.48 %	6.25	2.47 %
BC01 General Building Construction	1	0.75 %	2.00	0.79 %
BC20 Building Construction and Fire Behavior	1	0.75 %	2.50	0.99 %
CPAT Physical Agility Test	1	0.75 %	2.00	0.79 %
DT01 General Driver Training	13	9.70 %	12.50	4.93 %
EM01 Emergency Medical Services	1	0.75 %	0.50	0.20 %
EMFR First Responder	1	0.75 %	2.00	0.79 %
FC40 Strategic and Tactical Operations	5	3.73 %	8.50	3.35 %
FDPR Fire Dept. Pride	2	1.49 %	3.50	1.38 %
FW01 Boat Operations	1	0.75 %	1.50	0.59 %
FW02 Dive Training	1	0.75 %	4.50	1.78 %
FW03 SCBA Training	2	1.49 %	4.00	1.58 %
FW08 Hose Lays	1	0.75 %	2.00	0.79 %
FW11 Aerial Operations	3	2.24 %	3.50	1.38 %
FW12 Hydrant Training	1	0.75 %	2.00	0.79 %
FW14 Truck Maintenance	10	7.46 %	9.00	3.55 %
HZ00 HazMat Team/Advisory	7	5.22 %	15.00	5.92 %
HZ01 Hazardous Materials Overview	1	0.75 %	1.00	0.39 %
HZ03 Hazmat Technician	6	4.48 %	41.50	16.37 %
LCDT Lorain County Dive Team	3	2.24 %	16.50	6.51 %
SW1 Swiftwater Rescue 1 / Ops	1	0.75 %	2.00	0.79 %
Totals for Staff:	134		253.50	

WCM-3191 MOORE, WILLIAM C

AD02 Fire Department Organization	1	14.29 %	1.00	10.00 %
AD04 Station Maintenance	1	14.29 %	2.00	20.00 %
DT01 General Driver Training	1	14.29 %	2.00	20.00 %
EM01 Emergency Medical Services	1	14.29 %	0.50	5.00 %
FC40 Strategic and Tactical Operations	2	28.57 %	2.50	25.00 %
FW11 Aerial Operations	1	14.29 %	2.00	20.00 %
Totals for Staff:	7		10.00	

DJO-0649 OSWALD, DERICK J

AD01 Administrative Procedures	1	2.94 %	1.00	1.71 %
AD02 Fire Department Organization	1	2.94 %	1.00	1.71 %
AD03 Public Education	3	8.82 %	5.50	9.40 %
AD04 Station Maintenance	3	8.82 %	5.50	9.40 %
AP10 Apparatus Check Procedures	7	20.59 %	15.00	25.64 %

Wellington Fire District

Staff Training Analysis

Class Date Between {01/01/2014} And {12/31/2014}

Category	# Attended	Pct of Attended	Hours	Pct of Hours
DJO-0649 OSWALD, DERICK J				
APPUMP Apparatus Pump Training	2	5.88 %	4.00	6.84 %
BC01 General Building Construction	1	2.94 %	2.00	3.42 %
BC20 Building Construction and Fire Behavior	1	2.94 %	2.50	4.27 %
DT01 General Driver Training	2	5.88 %	2.50	4.27 %
EM01 Emergency Medical Services	1	2.94 %	0.50	0.85 %
EMFR First Responder	1	2.94 %	2.00	3.42 %
FC40 Strategic and Tactical Operations	4	11.76 %	6.50	11.11 %
FDPR Fire Dept. Pride	1	2.94 %	1.50	2.56 %
FW03 SCBA Training	2	5.88 %	4.00	6.84 %
FW11 Aerial Operations	2	5.88 %	1.50	2.56 %
FW13 Water Shuttle	1	2.94 %	2.50	4.27 %
HZ01 Hazardous Materials Overview	1	2.94 %	1.00	1.71 %
Totals for Staff:	34		58.50	

TAP-4160 PITTS, TROY A

AD01 Administrative Procedures	1	1.01 %	1.00	0.35 %
AD02 Fire Department Organization	2	2.02 %	2.50	0.87 %
AD03 Public Education	5	5.05 %	15.25	5.30 %
AD04 Station Maintenance	10	10.10 %	23.00	7.99 %
AD06 Fire Officer 1	1	1.01 %	40.00	13.89 %
AD07 Fire Officer 2	1	1.01 %	40.00	13.89 %
AP02 Hose Testing	4	4.04 %	10.25	3.56 %
AP10 Apparatus Check Procedures	22	22.22 %	31.50	10.94 %
APPUMP Apparatus Pump Training	2	2.02 %	2.50	0.87 %
BC20 Building Construction and Fire Behavior	1	1.01 %	2.50	0.87 %
CPAT Physical Agility Test	1	1.01 %	2.00	0.69 %
DT01 General Driver Training	4	4.04 %	3.50	1.22 %
EM01 Emergency Medical Services	1	1.01 %	0.50	0.17 %
FC40 Strategic and Tactical Operations	3	3.03 %	5.00	1.74 %
FDPR Fire Dept. Pride	3	3.03 %	5.50	1.91 %
FI03 Fire Instruction	2	2.02 %	4.50	1.56 %
FIBOARD Fire Board Meeting	1	1.01 %	3.00	1.04 %
FP02 Specialized Equipment	1	1.01 %	4.00	1.39 %
FW02 Dive Training	1	1.01 %	4.50	1.56 %
FW03 SCBA Training	2	2.02 %	4.00	1.39 %
FW04 Search & Rescue	1	1.01 %	2.00	0.69 %
FW05 Ladder Training	2	2.02 %	3.50	1.22 %
FW08 Hose Lays	1	1.01 %	2.00	0.69 %
FW11 Aerial Operations	2	2.02 %	4.25	1.48 %
FW12 Hydrant Training	2	2.02 %	5.50	1.91 %
FW13 Water Shuttle	1	1.01 %	2.50	0.87 %
FW14 Truck Maintenance	5	5.05	11.00	3.82

Wellington Fire District

Staff Training Analysis

Class Date Between {01/01/2014} And {12/31/2014}

Category	# Attended	Pct of Attended	Hours	Pct of Hours
TAP-4160 PITTS, TROY A				
HZ01 Hazardous Materials Overview	1	1.01 %	1.00	0.35 %
LCDT Lorain County Dive Team	7	7.07 %	26.50	9.20 %
LCSW Lorain County Swiftwater Team	1	1.01 %	4.75	1.65 %
OFD Officer Leadership Development	1	1.01 %	3.00	1.04 %
OFF O1 Officers Training	6	6.06 %	15.00	5.21 %
SW1 Swiftwater Rescue 1 / Ops	1	1.01 %	2.00	0.69 %
Totals for Staff:	99		288.00	
TSP-5843 POLEN, TIMOTHY S				
AD01 Administrative Procedures	1	3.85 %	1.00	1.89 %
AD02 Fire Department Organization	1	3.85 %	1.00	1.89 %
AD04 Station Maintenance	5	19.23 %	8.00	15.09 %
AP10 Apparatus Check Procedures	3	11.54 %	6.00	11.32 %
APPUMP Apparatus Pump Training	1	3.85 %	2.00	3.77 %
CPAT Physical Agility Test	1	3.85 %	2.00	3.77 %
DT01 General Driver Training	1	3.85 %	2.00	3.77 %
EM01 Emergency Medical Services	3	11.54 %	12.00	22.64 %
EM14 EMS Scenarios	1	3.85 %	1.50	2.83 %
EMFR First Responder	1	3.85 %	2.00	3.77 %
FC40 Strategic and Tactical Operations	2	7.69 %	4.00	7.55 %
FW03 SCBA Training	2	7.69 %	4.00	7.55 %
FW08 Hose Lays	1	3.85 %	2.00	3.77 %
FW13 Water Shuttle	1	3.85 %	2.50	4.72 %
FW14 Truck Maintenance	1	3.85 %	1.00	1.89 %
SW1 Swiftwater Rescue 1 / Ops	1	3.85 %	2.00	3.77 %
Totals for Staff:	26		53.00	
CLR-5299 REGAL, CHAD L				
AD01 Administrative Procedures	1	1.02 %	1.00	0.44 %
AD02 Fire Department Organization	2	2.04 %	2.50	1.11 %
AD03 Public Education	2	2.04 %	3.00	1.33 %
AD04 Station Maintenance	5	5.10 %	5.00	2.22 %
AD06 Fire Officer 1	1	1.02 %	40.00	17.74 %
AD07 Fire Officer 2	1	1.02 %	40.00	17.74 %
AP02 Hose Testing	1	1.02 %	2.00	0.89 %
AP10 Apparatus Check Procedures	26	26.53 %	48.50	21.51 %
APPUMP Apparatus Pump Training	10	10.20 %	6.25	2.77 %
BC01 General Building Construction	1	1.02 %	2.00	0.89 %
BC20 Building Construction and Fire Behavior	1	1.02 %	2.50	1.11 %
CPAT Physical Agility Test	1	1.02 %	2.00	0.89 %
DT01 General Driver Training	12	12.24 %	9.75	4.32 %

Wellington Fire District

Staff Training Analysis

Class Date Between {01/01/2014} And {12/31/2014}

Category	# Attended	Pct of Attended	Hours	Pct of Hours
CLR-5299 REGAL, CHAD L				
EM01 Emergency Medical Services	1	1.02 %	0.50	0.22 %
FC40 Strategic and Tactical Operations	4	4.08 %	6.00	2.66 %
FDPR Fire Dept. Pride	2	2.04 %	3.50	1.55 %
FI00 Fire Instruction Preparation	1	1.02 %	2.00	0.89 %
FI03 Fire Instruction	2	2.04 %	4.50	2.00 %
FIBOARD Fire Board Meeting	1	1.02 %	3.00	1.33 %
FW03 SCBA Training	2	2.04 %	4.00	1.77 %
FW04 Search & Rescue	1	1.02 %	2.00	0.89 %
FW08 Hose Lays	1	1.02 %	2.00	0.89 %
FW11 Aerial Operations	6	6.12 %	4.00	1.77 %
FW13 Water Shuttle	1	1.02 %	2.50	1.11 %
FW14 Truck Maintenance	3	3.06 %	5.00	2.22 %
HZ01 Hazardous Materials Overview	1	1.02 %	1.00	0.44 %
OFD Officer Leadership Development	1	1.02 %	3.00	1.33 %
OFF O1 Officers Training	7	7.14 %	18.00	7.98 %
Totals for Staff:	98		225.50	

SJR-3750 REGAL, SCOTT J

AD01 Administrative Procedures	1	0.91 %	1.00	0.56 %
AD02 Fire Department Organization	1	0.91 %	1.00	0.56 %
AD03 Public Education	2	1.82 %	6.25	3.51 %
AD04 Station Maintenance	28	25.45 %	40.00	22.44 %
AP10 Apparatus Check Procedures	34	30.91 %	68.00	38.15 %
APPUMP Apparatus Pump Training	5	4.55 %	10.50	5.89 %
BC01 General Building Construction	1	0.91 %	2.00	1.12 %
BC20 Building Construction and Fire Behavior	1	0.91 %	2.50	1.40 %
CPAT Physical Agility Test	1	0.91 %	2.00	1.12 %
DT01 General Driver Training	11	10.00 %	12.00	6.73 %
EM01 Emergency Medical Services	1	0.91 %	0.50	0.28 %
FC40 Strategic and Tactical Operations	2	1.82 %	2.50	1.40 %
FDPR Fire Dept. Pride	1	0.91 %	1.50	0.84 %
FV20 Vehicle Extrication	1	0.91 %	2.00	1.12 %
FW01 Boat Operations	1	0.91 %	1.50	0.84 %
FW02 Dive Training	1	0.91 %	4.50	2.52 %
FW03 SCBA Training	1	0.91 %	1.50	0.84 %
FW10 Hydrant Testing	1	0.91 %	2.00	1.12 %
FW11 Aerial Operations	1	0.91 %	1.00	0.56 %
FW14 Truck Maintenance	14	12.73 %	14.00	7.85 %
SW1 Swiftwater Rescue 1 / Ops	1	0.91 %	2.00	1.12 %
Totals for Staff:	110		178.25	

Wellington Fire District

Staff Training Analysis

Class Date Between {01/01/2014} And {12/31/2014}

Category	# Attended	Pct of Attended	Hours	Pct of Hours
DJR-6944 REYNOLDS, DUSTIN JAY				
AD01 Administrative Procedures	1	1.41 %	1.00	0.71 %
AD02 Fire Department Organization	1	1.41 %	1.00	0.71 %
AD04 Station Maintenance	10	14.08 %	16.50	11.68 %
AP02 Hose Testing	2	2.82 %	5.25	3.72 %
AP10 Apparatus Check Procedures	16	22.54 %	28.50	20.18 %
APPUMP Apparatus Pump Training	4	5.63 %	5.50	3.89 %
BC01 General Building Construction	1	1.41 %	2.00	1.42 %
BC20 Building Construction and Fire Behavior	1	1.41 %	2.50	1.77 %
CPAT Physical Agility Test	1	1.41 %	2.00	1.42 %
DT01 General Driver Training	10	14.08 %	8.50	6.02 %
EMFR First Responder	9	12.68 %	36.00	25.49 %
FC40 Strategic and Tactical Operations	4	5.63 %	11.00	7.79 %
FDPR Fire Dept. Pride	1	1.41 %	1.50	1.06 %
FV01 Basic Fire Investigation	1	1.41 %	6.00	4.25 %
FW01 Boat Operations	1	1.41 %	1.50	1.06 %
FW03 SCBA Training	2	2.82 %	4.00	2.83 %
FW04 Search & Rescue	1	1.41 %	2.00	1.42 %
FW05 Ladder Training	1	1.41 %	2.00	1.42 %
FW11 Aerial Operations	2	2.82 %	1.00	0.71 %
FW13 Water Shuttle	1	1.41 %	2.50	1.77 %
FW14 Truck Maintenance	1	1.41 %	1.00	0.71 %
Totals for Staff:	71		141.25	

DMR-8938 ROSER, DAVID

AD01 Administrative Procedures	1	0.84 %	1.00	0.37 %
AD02 Fire Department Organization	2	1.68 %	9.00	3.33 %
AD03 Public Education	1	0.84 %	4.00	1.48 %
AD04 Station Maintenance	21	17.65 %	20.50	7.59 %
AP02 Hose Testing	2	1.68 %	4.50	1.67 %
AP10 Apparatus Check Procedures	26	21.85 %	43.50	16.10 %
APPUMP Apparatus Pump Training	6	5.04 %	16.50	6.11 %
BC01 General Building Construction	1	0.84 %	2.00	0.74 %
BC20 Building Construction and Fire Behavior	1	0.84 %	2.50	0.93 %
CPAT Physical Agility Test	1	0.84 %	2.00	0.74 %
DT01 General Driver Training	10	8.40 %	9.00	3.33 %
EM01 Emergency Medical Services	1	0.84 %	0.50	0.19 %
EMFR First Responder	11	9.24 %	44.00	16.28 %
FC01 Fire Control, General	1	0.84 %	1.00	0.37 %
FC40 Strategic and Tactical Operations	3	2.52 %	5.00	1.85 %
FDPR Fire Dept. Pride	1	0.84 %	2.00	0.74 %
FV20 Vehicle Extrication	1	0.84 %	2.00	0.74 %
FW001 Rope Equipment Maintenance	1	0.84	2.00	0.74

Wellington Fire District

Staff Training Analysis

Class Date Between {01/01/2014} And {12/31/2014}

Category	# Attended	Pct of Attended	Hours	Pct of Hours
DMR-8938 ROSER, DAVID				
FW01 Boat Operations	1	0.84 %	1.50	0.56 %
FW02 Dive Training	1	0.84 %	4.50	1.67 %
FW03 SCBA Training	2	1.68 %	4.00	1.48 %
FW04 Search & Rescue	1	0.84 %	2.00	0.74 %
FW05 Ladder Training	2	1.68 %	4.00	1.48 %
FW08 Hose Lays	1	0.84 %	2.00	0.74 %
FW11 Aerial Operations	1	0.84 %	1.00	0.37 %
FW12 Hydrant Training	1	0.84 %	2.00	0.74 %
FW13 Water Shuttle	1	0.84 %	2.50	0.93 %
FW14 Truck Maintenance	4	3.36 %	3.00	1.11 %
HZ01 Hazardous Materials Overview	1	0.84 %	1.00	0.37 %
HZ03 Hazmat Technician	5	4.20 %	40.00	14.80 %
LCDT Lorain County Dive Team	5	4.20 %	21.75	8.05 %
LCSW Lorain County Swiftwater Team	2	1.68 %	10.00	3.70 %
Totals for Staff:	119		270.25	

DLS-6393 SHINSKY, DANIEL L

AD01 Administrative Procedures	1	1.25 %	1.00	0.78 %
AD02 Fire Department Organization	1	1.25 %	1.00	0.78 %
AD04 Station Maintenance	8	10.00 %	17.50	13.65 %
AP02 Hose Testing	3	3.75 %	6.00	4.68 %
AP10 Apparatus Check Procedures	37	46.25 %	69.25	54.00 %
APPUMP Apparatus Pump Training	7	8.75 %	4.75	3.70 %
BC01 General Building Construction	1	1.25 %	2.00	1.56 %
BC20 Building Construction and Fire Behavior	1	1.25 %	2.50	1.95 %
CPAT Physical Agility Test	1	1.25 %	2.00	1.56 %
DT01 General Driver Training	5	6.25 %	2.75	2.14 %
EM01 Emergency Medical Services	1	1.25 %	0.50	0.39 %
EM13 Specialized Equipment	1	1.25 %	1.50	1.17 %
FC40 Strategic and Tactical Operations	2	2.50 %	2.50	1.95 %
FW03 SCBA Training	1	1.25 %	1.50	1.17 %
FW11 Aerial Operations	2	2.50 %	1.00	0.78 %
FW13 Water Shuttle	1	1.25 %	2.50	1.95 %
FW14 Truck Maintenance	5	6.25 %	7.00	5.46 %
HZ01 Hazardous Materials Overview	1	1.25 %	1.00	0.78 %
SW1 Swiftwater Rescue 1 / Ops	1	1.25 %	2.00	1.56 %
Totals for Staff:	80		128.25	

RSS-7830 SMITH, RICHARD S.

AD01 Administrative Procedures	1	2.78 %	1.00	1.02 %
AD02 Fire Department Organization	1	2.78 %	1.00	1.02 %

Wellington Fire District

Staff Training Analysis

Class Date Between {01/01/2014} And {12/31/2014}

Category	# Attended	Pct of Attended	Hours	Pct of Hours
RSS-7830 SMITH, RICHARD S.				
AD03 Public Education	1	2.78 %	4.00	4.08 %
AP02 Hose Testing	2	5.56 %	5.50	5.61 %
APPUMP Apparatus Pump Training	1	2.78 %	6.00	6.12 %
BC20 Building Construction and Fire Behavior	1	2.78 %	2.50	2.55 %
CPAT Physical Agility Test	1	2.78 %	2.00	2.04 %
DT01 General Driver Training	1	2.78 %	2.00	2.04 %
EM01 Emergency Medical Services	1	2.78 %	0.50	0.51 %
EMFR First Responder	10	27.78 %	40.00	40.82 %
FC40 Strategic and Tactical Operations	3	8.33 %	5.00	5.10 %
FDPR Fire Dept. Pride	3	8.33 %	5.50	5.61 %
FW01 Boat Operations	1	2.78 %	1.50	1.53 %
FW03 SCBA Training	2	5.56 %	4.00	4.08 %
FW04 Search & Rescue	1	2.78 %	2.00	2.04 %
FW05 Ladder Training	1	2.78 %	2.00	2.04 %
FW08 Hose Lays	1	2.78 %	2.00	2.04 %
FW13 Water Shuttle	1	2.78 %	2.50	2.55 %
HZ01 Hazardous Materials Overview	2	5.56 %	7.00	7.14 %
SW1 Swiftwater Rescue 1 / Ops	1	2.78 %	2.00	2.04 %
Totals for Staff:	36		98.00	

MSS-8545 STANDEN, MICHAEL S.

AD01 Administrative Procedures	1	2.33 %	1.00	0.98 %
AD04 Station Maintenance	7	16.28 %	9.50	9.27 %
AP10 Apparatus Check Procedures	14	32.56 %	34.50	33.66 %
BC01 General Building Construction	1	2.33 %	2.00	1.95 %
CPAT Physical Agility Test	1	2.33 %	2.00	1.95 %
DT01 General Driver Training	1	2.33 %	2.00	1.95 %
EMFR First Responder	9	20.93 %	36.00	35.12 %
FC40 Strategic and Tactical Operations	3	6.98 %	5.00	4.88 %
FW03 SCBA Training	1	2.33 %	2.50	2.44 %
FW04 Search & Rescue	1	2.33 %	2.00	1.95 %
FW11 Aerial Operations	1	2.33 %	1.50	1.46 %
FW13 Water Shuttle	1	2.33 %	2.50	2.44 %
FW14 Truck Maintenance	1	2.33 %	1.00	0.98 %
HZ01 Hazardous Materials Overview	1	2.33 %	1.00	0.98 %
Totals for Staff:	43		102.50	

TAS-3641 STANDEN, TIMOTHY A.

AD01 Administrative Procedures	1	2.22 %	1.00	0.88 %
AD02 Fire Department Organization	1	2.22 %	1.00	0.88 %
AD03 Public Education	2	4.44 %	7.75	6.78 %

Wellington Fire District

Staff Training Analysis

Class Date Between {01/01/2014} And {12/31/2014}

Category	# Attended	Pct of Attended	Hours	Pct of Hours
TAS-3641 STANDEN, TIMOTHY A.				
AD04 Station Maintenance	4	8.89 %	5.50	4.81 %
AP10 Apparatus Check Procedures	7	15.56 %	16.50	14.44 %
BC01 General Building Construction	1	2.22 %	2.00	1.75 %
BC20 Building Construction and Fire Behavior	1	2.22 %	2.50	2.19 %
CPAT Physical Agility Test	1	2.22 %	2.00	1.75 %
DT01 General Driver Training	1	2.22 %	2.00	1.75 %
EM01 Emergency Medical Services	1	2.22 %	0.50	0.44 %
EMFR First Responder	9	20.00 %	36.00	31.51 %
FC40 Strategic and Tactical Operations	5	11.11 %	13.00	11.38 %
FDPR Fire Dept. Pride	1	2.22 %	2.00	1.75 %
FV01 Basic Fire Investigation	1	2.22 %	6.00	5.25 %
FW01 Boat Operations	1	2.22 %	1.50	1.31 %
FW03 SCBA Training	2	4.44 %	4.00	3.50 %
FW04 Search & Rescue	1	2.22 %	2.00	1.75 %
FW05 Ladder Training	1	2.22 %	2.00	1.75 %
FW11 Aerial Operations	1	2.22 %	1.50	1.31 %
FW13 Water Shuttle	1	2.22 %	2.50	2.19 %
FW14 Truck Maintenance	1	2.22 %	2.00	1.75 %
HZ01 Hazardous Materials Overview	1	2.22 %	1.00	0.88 %
Totals for Staff:	45		114.25	

ENT-2269 THORN, ED N

AD01 Administrative Procedures	1	1.61 %	1.00	0.86 %
AD04 Station Maintenance	15	24.19 %	31.00	26.78 %
AP02 Hose Testing	2	3.23 %	4.00	3.46 %
AP10 Apparatus Check Procedures	22	35.48 %	38.25	33.05 %
APPUMP Apparatus Pump Training	4	6.45 %	12.00	10.37 %
BC20 Building Construction and Fire Behavior	1	1.61 %	2.50	2.16 %
CPAT Physical Agility Test	1	1.61 %	2.00	1.73 %
DT01 General Driver Training	3	4.84 %	4.00	3.46 %
EM01 Emergency Medical Services	3	4.84 %	6.50	5.62 %
EM13 Specialized Equipment	1	1.61 %	1.50	1.30 %
FC40 Strategic and Tactical Operations	2	3.23 %	2.50	2.16 %
FDPR Fire Dept. Pride	2	3.23 %	3.50	3.02 %
FW01 Boat Operations	1	1.61 %	1.50	1.30 %
FW14 Truck Maintenance	2	3.23 %	2.50	2.16 %
HZ01 Hazardous Materials Overview	1	1.61 %	1.00	0.86 %
SW1 Swiftwater Rescue 1 / Ops	1	1.61 %	2.00	1.73 %
Totals for Staff:	62		115.75	

Wellington Fire District

Staff Training Analysis

Class Date Between {01/01/2014} And {12/31/2014}

Category	# Attended	Pct of Attended	Hours	Pct of Hours
JMM-2877 TRIPP, JUSTEN M				
AD01 Administrative Procedures	1	2.63 %	1.00	1.49 %
AD03 Public Education	2	5.26 %	6.25	9.29 %
AD04 Station Maintenance	4	10.53 %	6.50	9.67 %
AP10 Apparatus Check Procedures	13	34.21 %	23.50	34.94 %
APPUMP Apparatus Pump Training	1	2.63 %	2.00	2.97 %
EM01 Emergency Medical Services	1	2.63 %	0.50	0.74 %
FC40 Strategic and Tactical Operations	2	5.26 %	4.00	5.95 %
FDPR Fire Dept. Pride	1	2.63 %	1.50	2.23 %
FV20 Vehicle Extrication	1	2.63 %	2.00	2.97 %
FW03 SCBA Training	1	2.63 %	1.50	2.23 %
FW05 Ladder Training	1	2.63 %	2.00	2.97 %
FW08 Hose Lays	1	2.63 %	2.00	2.97 %
FW10 Hydrant Testing	1	2.63 %	2.00	2.97 %
FW13 Water Shuttle	1	2.63 %	2.50	3.72 %
FW14 Truck Maintenance	5	13.16 %	7.00	10.41 %
HZ01 Hazardous Materials Overview	1	2.63 %	1.00	1.49 %
SW1 Swiftwater Rescue 1 / Ops	1	2.63 %	2.00	2.97 %
Totals for Staff:	38		67.25	

GMW-3858 WETHERBEE, GLENN M

AD01 Administrative Procedures	11	12.79 %	19.00	9.18 %
AD02 Fire Department Organization	20	23.26 %	42.75	20.65 %
AD03 Public Education	11	12.79 %	23.75	11.47 %
AP01 Pumper Overhaul and Repair	1	1.16 %	6.00	2.90 %
BC01 General Building Construction	1	1.16 %	2.00	0.97 %
BC20 Building Construction and Fire Behavior	1	1.16 %	2.50	1.21 %
CPAT Physical Agility Test	1	1.16 %	2.00	0.97 %
DT01 General Driver Training	1	1.16 %	2.00	0.97 %
EM01 Emergency Medical Services	1	1.16 %	0.50	0.24 %
EM13 Specialized Equipment	1	1.16 %	1.50	0.72 %
FC01 Fire Control, General	1	1.16 %	1.00	0.48 %
FC40 Strategic and Tactical Operations	4	4.65 %	14.50	7.00 %
FDPR Fire Dept. Pride	5	5.81 %	12.50	6.04 %
FI00 Fire Instruction Preparation	2	2.33 %	3.00	1.45 %
FI02 Fire Instructor	1	1.16 %	8.00	3.86 %
FI03 Fire Instruction	4	4.65 %	11.50	5.56 %
FIBOARD Fire Board Meeting	1	1.16 %	3.00	1.45 %
FV02 Fire Safety Inspector Training	2	2.33 %	8.00	3.86 %
FW01 Boat Operations	1	1.16 %	1.50	0.72 %
FW02 Dive Training	1	1.16 %	4.50	2.17 %
FW03 SCBA Training	2	2.33 %	4.00	1.93 %
FW04 Search & Rescue	1	1.16	2.00	0.97

Wellington Fire District

Staff Training Analysis

Class Date Between {01/01/2014} And {12/31/2014}

Category	# Attended	Pct of Attended	Hours	Pct of Hours
GMW-3858 WETHERBEE, GLENN M				
FW08 Hose Lays	1	1.16 %	2.00	0.97 %
FW13 Water Shuttle	1	1.16 %	2.50	1.21 %
FW14 Truck Maintenance	1	1.16 %	4.00	1.93 %
OFD Officer Leadership Development	1	1.16 %	3.00	1.45 %
OFF O1 Officers Training	7	8.14 %	18.00	8.70 %
SW1 Swiftwater Rescue 1 / Ops	1	1.16 %	2.00	0.97 %
Totals for Staff:	86		207.00	
Grand Totals:	2,151		4,846.25	



