



WELLINGTON COMMUNITY FIRE DISTRICT



2013 ANNUAL REPORT

Mission Statement:

"Proudly serving since 1881, the Wellington Community Fire District protects the citizens and property of our six communities, by providing professional, courteous, and cost-effective fire prevention, protection, and emergency services."

Now one hundred and thirty-two years old, the Wellington Community Fire District has grown significantly since its meager beginnings in the latter half of the 19th century. The station is now manned a great part of each day, new training requirements emerge annually, and the volume of calls has increased dramatically. Yet it remains important to remember how and why the department was created. The following story was written by Terry Mazzone, who served on the department for seventeen years, while working locally for the Wellington Enterprise.

The First Fire Call

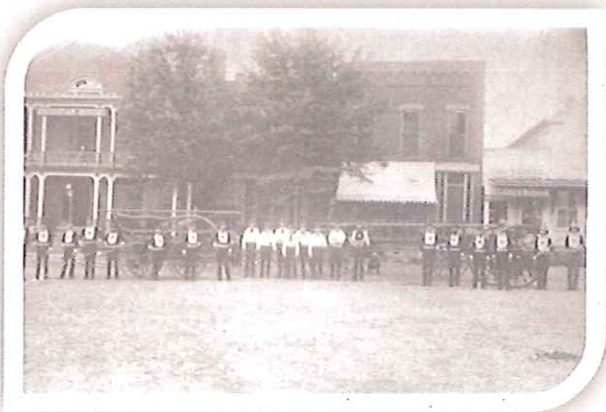
(From the July 30, 1981 Wellington Enterprise)

by Terry Mazzone

The newly organized Wellington Fire Department was behind the eight ball when it received its first call near midnight on Sunday, January 30, 1881, nine days after the Fire Department held its first organizational meeting.

The first bell was ringing in the night air. The fire, which had started on the west side of the business district, was raging.

Where was the fire engine? It was on the second story of the Doland Carriage Shop. It didn't have any wheels on it and the brakes and tongue had been removed from the horse-drawn fire engine in order to get it into the elevator and to the second floor, where they planned to paint the name of "E.G. Fuller" on the vehicle, in honor of the mayor.



Within 20 minutes after the bells started ringing, the firemen had replaced the wheels, tongue and brakes and the engine was ready for use.

The Fire Department's first blaze destroyed the A.H. Palmer Building, which housed the S.E. Peters grocery store and Mrs. Palmer's dressmaking shop, the Bunce Candy Stand and the Wooley Hardware store. The Post Office Building was nearly razed. All movable equipment was removed from the Wellington Enterprise's plant and stock was taken from Wight Jewelers.

Wellington Fire District 2013 Annual Report

Section I Personnel

From Chief Wetherbee

Wellington Fire District Board of Trustees
Evolution of Our Fire Department & Joint Fire District

Wellington Fire District Personnel
Personnel Who Left in 2013

Personnel Milestones
Department Certifications
Past Firefighters of the Year Recipients

Roster History

Wellington Firefighter's Association Activities

2013 Firefighter of the Year

Section II District Finances

Current Financial Status

Building and Grounds Report

Section III Fire Prevention, Public Education & Safety

Fire Prevention Overview
Public Education Review

Fire Safety Inspections
Child Car Seat Safety
Juvenile Fire Setters Program

Section IV 2013 Incident Statistics

2013 Major Incidents

Incident Types

Incidents by District / Dollars Saved Versus Lost

Incident Alarm Times

Average Personnel Turnout

Calls by Day of the Week

Unit Response Summary

Train Delays

Average Response Time by District / Structure Fires

Average Response Time by District / MVA's

Average Response Time by District / First Responder Calls

Annual Incident Summary Chart

Annual Incident Dollar Loss Chart

Mutual Aid Response Summary Chart

Incidents / Dollar Loss by Township

2013 Incident Summary Detail

Section V 2013 Training and Activities

Technical Rescue Training

Training and Activity Summary

Training Analysis by Staff Summary

Training by Category Summary

Training Analysis by Staff Detail

SECTION I: PERSONNEL

Wellington Community Fire District – 2013 Year in Review

By Chief Mike Wetherbee

Department Profile:

The Wellington Fire District provides emergency and non-emergency response services to the Village of Wellington and the townships of Wellington, Brighton, Huntington, Penfield, and Pittsfield. The district covers approximately 125 square miles and remains one of the largest such districts in the state of Ohio. Our governing body consists of a Trustee from each township served, as well as, a member of the Wellington Village Council. The 2013 board members included President Chris Stanfield of Brighton Township, Vice-President Jeff Hyde of Wellington Village,



Trustee Mark Diedrick of Pittsfield, Trustee Lloyd Gordon of Penfield Township, Trustee Dale McAvena of Wellington Township, Trustee Walter Rollin of Huntington Township and Fiscal Officer Vanya Hales.

The Wellington Fire Department was first formed in 1881. In 1970, Wellington Fire District, the first of its kind in the State of Ohio was formed after local and state politicians lobbied for legislation allowing the village and the five surrounding townships to form a joint fire district. It must also be added that former village solicitor Harrison Comstock played an instrumental role in the formation of this district.

Personnel:

Chief Mike Wetherbee, in his second year, is joined by two Assistant Chiefs, Jim Clark and Bill Brown. After the retirement of Lieutenant Brian Slack, the district utilized the services of the three remaining Lieutenants, Troy Pitts, Greg Frenk, and Chad Regal. The department said good-bye to two members 2013. Lieutenant Brain Slack retired after nearly fourteen years with the district. Brian's career spanned over 25 years, as he previously served twelve years with the Eaton Township Fire Department. Firefighter Bill Varner also called it quits after serving eight years with the district. With the roster beginning to age, it is important to note that our three firefighters hired in 2012 have stepped in and performed well. In addition, the district hired 5 additional personnel in 2013. These new recruits, Jason Dumke, Tyler Abbey, Tyler Honoshofsky, Justen Tripp, and Steven Garn are joined by Wellington's first female firefighter, Melissa Fuquay. All have already certified to Firefighter I, and are performing well.

Funding Information:

The Wellington Fire District is funded through a 2.5 mil property tax levy which revolves on a 5 year cycle. The district is entering its fourth year of the cycle, with the next levy campaign occurring in May of 2015. The levy generates approximately \$696,000 annually, and is supplemented by grants that are actively sought by the District. An example of one of the grant sources is FEMA/AFG. While not a guaranteed source of revenue, the district has had past success in receiving these additional funds.

Capital Improvements:

Repairs and improvements to the exterior brickwork and the deteriorating apparatus bay floors at station #2 were considered, then tabled until 2014. Unforeseen repairs to various pieces of apparatus proved costly in 2013. The district is also reaching expiration dates, which requires replacement, of various pieces of safety equipment. In 2014, as the district begins preparation for its next levy cycle, medium and long term plans will be discussed regarding the next replacement of apparatus and station renovations. As always, minor maintenance and upgrades to facilities and apparatus are constant.

Major notables for 2013:

Wellington Firefighters, as well as over a dozen other fire departments assisted Camden Fire in fighting a massive blaze at the Green Circle Growers in Kipton on February 19th. Brutal weather conditions were encountered by firefighters for over eleven hours while on scene.

State Route 58 Railroad grade separation – Groundbreaking for the project took place on April 8th. Construction started and has been on-going with the project still slated for completion in October of 2014.

Firefighters responded to a camper fire in May which claimed the life of an elderly male. The last fire related fatality in the district occurred in 2004 when two residents perished in a late afternoon house fire.

Chief Wetherbee traveled to Columbus in June to provide proponent testimony for SB 106 on behalf of the State Fire Chiefs before the Senate Transportation Committee. Senate Bill 106 imposes harsher penalties for motorists who ignore road closed signage and travel onto flooded roadways. (Senate passed the Bill 32-0, sending it to the House of Representatives)

In August, Fire Board member, and Penfield Trustee Lloyd Gordon was critically injured in an accident while working on the family farm. Trustee Gordon was lifeflighted from the scene with numerous critical injuries and after several surgeries and extended time in the hospital, he has made what most would call a miraculous recovery.

In September, the Fire District broke the gender barrier for the first time in its 133 years by hiring Firefighter Melissa Fuquay. Ms. Fuquay tested and interviewed well, and at this time has completed her firefighter I training.

Also in September an auto accident in Huntington Township left two occupants critically injured and unable to escape the burning vehicle. Passers-by Shane and Brittney Robinson arrived on scene and rescue the two occupants pulling them to safety as fire consumed the vehicle. Shane and Brittney have been honored by the Fire District, South Lorain County Ambulance District, and the State Fire Marshal for their heroism displayed that evening.

In December, the community of Wellington mourned the untimely passing of young Drew Geyer. Only thirteen years of age, Drew's obituary stated that he wanted to be a firefighter. The members of the department attended Drew's visitation and presented a plaque and badge to Tom and Brandi Geyer, naming Drew as an Honorary Firefighter.

Services Provided:

The Wellington Fire District, its Board of Trustees, Officers, and Firefighters take pride in serving our community. The district provides response to any and all incidents within our jurisdiction, as well as, mutual aid to our surrounding communities. Incidents include the obvious fire calls, motor vehicle accidents, first responder calls, and odor complaints to name a few. The district also responds to calls such as animal rescues, any type of water incident, missing person searches, and weather related incidents. The district provides public and private fire prevention and education throughout the schools, daycares, area businesses and industries, and various groups such as Boy Scout and Girl Scout troops. In 2013 our firefighters continued fire public relations in other cities when their own fire departments refused. The district attends many functions and annual meetings, such as Kiwanis, Lorain Medina Rural Electric, Wellington Women's League, and the annual senior citizens luncheon, to present various lectures.

Wellington Fire District remains committed to conducting fire inspection and preplanning activities throughout the businesses and industries in our service area. These actions help lessen the risk of incidents, and prepare not only the occupants, but also the firefighters should an emergency arise. New construction, renovation and change of occupancy to existing buildings are also monitored to ensure safety, and adherence to the codes. "The Wellington Fire District is proud to serve and support the citizens of our communities."

Mission Statement

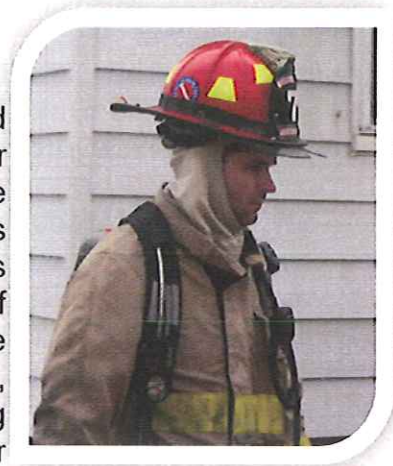
"Proudly serving since 1881, the Wellington Community Fire District protects the citizens and property of our six communities, by providing professional, courteous, and cost effective fire prevention, protection, and emergency services."



Wellington Fire District Board of Trustees

By Lt. Chad Regal

The Wellington Fire Department has been protecting and serving the community since 1881. In the 132 year history there have been many individuals that have served on this department. Along with these individuals there is another small group of individuals that makes this department tick, the board of trustees. The board of trustees is comprised of six elected officials from the Village of Wellington and the townships of Brighton, Huntington, Penfield, Pittsfield and Wellington. Along with those individuals they are joined by a fiscal officer that keeps all the financial affairs in order. The board members that served the community in 2013 are as follows:



- Representing Brighton Township is Chris Stanfield. Chris represents approximately 915 residents. Chris has served on the Fire District board since 2006 and currently is serving his second term as the Board President.
- The representative for the Village of Wellington is Jeff Hyde. Jeff has served on the Fire Board since 2008 and is a Village Councilman, serving nearly 5,000 residents. Jeff serves as the Board Vice President.
- Wellington Township which has approximately 1,420 residents was represented by Dale T. McAvena in 2013. Dale has served on the board since 2010. Dale also represented the residents of Wellington Township as a trustee. Jim Barbor will be replacing Dale in 2014. We would like to thank him for his dedication and service to the Wellington Fire District.
- Walter Rollin represents Huntington Township. Walter has served on the Fire Board since 2006. Walter also serves as a Huntington township trustee as well. Huntington has nearly 1,300 residents in the township.
- Since the early 90's Mark Diedrick has served on the Fire Board. Mark is the Pittsfield Township representative and is also a trustee for Pittsfield Township. Pittsfield is comprised of nearly 1,500 residents.
- Lloyd Gordon represents Penfield Township a community of approximately 1,800 people. Lloyd is also a Penfield Township trustee. This was Lloyd's first year as a member of the Wellington Fire Board of Trustees.
- Since 2002 Vanya Hales has served as the Fire District's Fiscal Officer. Vanya keeps track of all the finances the Fire District incurs, along with keeping the minutes from the Fire Board meetings held the first Wednesday of each month.

Evolution of Our Volunteer Fire Department and Joint Fire District

By Harrison Comstock

For many years it was financially impossible for the village or for any single township surrounding us to have its own fire department even though it was manned by an all volunteer staff or dedicated people. The answer came early on that the Village of Wellington and the Townships of Brighton, Huntington, Penfield, Pittsfield, and Wellington would go together to provide this important service.

The vehicles were based in the village since it was the central point and the volunteers were employed by business and industry located here. The Village paid for the operations and the purchase of equipment initially but semi-annually would submit a bill to each of the other participants for their prorated share. This system worked for many years and was accepted by all residents. During this period the trucks and equipment were rather limited and a working pumper could be purchased for a reasonable price as it was a fairly simple apparatus. Hose and ladders were added to an existing truck body painted red and sent out for service.

Brighton Township:	Chris Stanfield (President)
Huntington Township:	Walter Rollin
Penfield Township:	Lloyd Gordon
Pittsfield Township:	Mark Diedrick
Wellington Township:	Dale McAvena
Wellington Village:	Jeff Hyde (Vice President)
Fiscal Officer:	Vanya Hales
Legal Council:	Kim R. Meyers

As time went on, however, the trucks became much more sophisticated, complicated and necessarily more expensive. The costs increased to such an extent that none of the participating bodies could afford them from their limited general funds.

It was then that our local chief, Bill Weber, and several others approached Congressman Don Pease who was at that time our representative to the Ohio General Assembly. Through all of their efforts a law was enacted to permit the formation of a Joint Fire District as a separate and distinct taxing authority with the tax base being that of all those who joined in.

Resolutions were adopted by all named governing bodies to form the Wellington Community Joint Fire District and I believe this was the first one formed in the State of Ohio. Each participating unit has a representative on the Board of Trustees of the Joint District and their duties and methods of operation were established by vote of that body in accordance with the new laws.

The District, however, had no money, no budget and little actual knowledge of what was to be expected of it. This was organized during the period of time when Federal Revenue Sharing was taking place and each body had some of these funds on hand to be used at their discretion. Each unit paid into the District \$1,000 from their Revenue Sharing money to provide some operating funds until such time as a formal budget could be adopted, and an annual budget prepared for the coming year. Once this latter was completed the Lorain County Auditor's office was contacted to determine what a proper levy amount would be required to provide the funds necessary. This levy question was then presented to all voters in all the member areas along with information on what the funds would be spent for in the next succeeding five year period.

One of the provisions of the new law regarding the proceeds of a levy raised in this manner allows the Board of Trustees to borrow a percentage of the revenue from that levy in anticipation of its receipt. As soon as the electorate gave its approval of the proposed levy a loan was obtained to provide the operating funds for the next succeeding period of time. This same procedure continues today with the presentation of a proposed levy each five years the District remains as a separate taxing body.

At the same time these governments were demanding more and more of our local personnel they were reducing the services of the State Fire Marshal and others for local problems, inspections and investigations. It also required many more hours of required training for all the personnel of the department and as the result we now have two paid people to carry out the everyday operations while we still rely upon a dedicated staff of volunteers who devote many hundreds of hours to the work of the department and to their own skills improvement.

It takes a well organized and fully trained organization to do what these people do for us and I am sure we are all grateful for all they do and for the understanding employers of these persons who permit them to leave their employment when duty calls. The entire Wellington area can well be proud of the department it now has and of the service they provide, sometimes at the expense of missed suppers, kid's ball games and family picnics and otherwise quiet family times while they attend class to learn of new developments not only in fire fighting but in dealing with chemical spills and all the other situations declared to be emergencies.

Wellington Fire District Personnel / Year Hired

Chief	Mike Wetherbee, Full-time	1986	
Assistant Chief	Jim Clark	1977	
Assistant Chief	Bill Brown, Full-time	1991	
Lieutenant	Troy Pitts	1992	"Firefighter of the Year" 2000
Lieutenant	Brian Slack	2000	"Firefighter of the Year" 2004
Lieutenant	Greg Frenk	1996	"Firefighter of the Year" 2009
Lieutenant	Chad Regal	1998	
Firefighter	Gordy Lent	1980	"Firefighter of the Year" 2002
Firefighter	Scott Regal	1987	
Firefighter	Dave Crawford	1988	"Firefighter of the Year" 2001, 2013
Firefighter	Frank Marley	1988	"Firefighter of the Year" 2008
Firefighter	Casey Moore	1996	
Firefighter	John Clawson	1997	
Firefighter	Derick Oswald	1998	"Firefighter of the Year" 2011
Firefighter	Dan Shinsky	1998	
Firefighter	Bryan Hamer	1999	"Firefighter of the Year" 2003
Firefighter	Tim Polen	2001	"Firefighter of the Year" 2007
Firefighter	Ethan Little	2002	
Firefighter	Steve Higgins	2004	
Firefighter	Ed Thorn	2004	
Firefighter	Bill Varner	2006	
Firefighter	Darin Lewis	2006	"Firefighter of the Year" 2010
Firefighter	Dave Roser	2009	
Firefighter	Rich Smith	2009	
Firefighter	Dusty Reynolds	2009	
Firefighter	Mike Barlow	2010	"Firefighter of the Year 2012"
Firefighter	Ken Knapp	2012	
Firefighter	Mike Standen	2012	
Firefighter	Tim Standen	2012	
Firefighter	Jason Dumke	2013	
Firefighter	Tyler Abbey	2013	
Firefighter	Melissa Fuquay	2013	
Firefighter	Tyler Honoshofsky	2013	
Firefighter	Justen Tripp	2013	
Firefighter	Steve Garn	2013	

Personnel Who Left in 2013

Lieutenant	Brian Slack
Firefighter	Bill Varner
Firefighter	Tyler Abbey

Personnel Milestones in 2013

Lieutenant	Troy Pitts	21 Years
Assistant Chief	Bill Brown	22 Years
Firefighter	Dave Crawford	25 Years
Firefighter	Frank Marley	25 Years
Firefighter	Scott Regal	26 Years
Chief	Mike Wetherbee	27 Years
Firefighter	Gordy Lent	33 Years
Assistant Chief	Jim Clark	36 Years

Departmental Certifications

Firefighter II Level	21
Firefighter I Level	3
Firefighter 1A Level	12
Fire Instructors	2
Fire Safety Inspectors	8
Advanced Arson Investigators	3
Haz Mat Technicians	3
E.M.T. - Paramedic	1
E.M.T. - Intermediate	1
E.M.T. - Basic	14
E.M.T. - First Responder	6

Firefighter of the Year

Troy Pitts	2000
Dave Crawford	2001
Gordy Lent	2002
Bryan Hamer	2003
Brian Slack	2004
Ben Sickels	2005, posthumously
Al "Buz" Anderson, Jr.	2006, posthumously
Tim Polen	2007
Frank Marley	2008
Greg Frenk	2009
Darin Lewis	2010
Derick Oswald	2011
Mike Barlow	2012
Dave Crawford	2013

Personnel Roster History

Throughout the one-hundred and thirty-two year history of the Wellington Fire Department/District, many people have helped make this unit what it is today. The following is an attempt at recording our history through its members.

		Hire Date	Retire Date	Details	Passed Away	
Abbey,	Tyler	9/4/2013	11/06/2013	Firefighter		
Alspach,	Daniel N.	10/11/1967	03/17/1971	Firefighter	5/24/2009	
Alspach,	Fred	7/10/1991	10/23/1991	Firefighter; Former Board Member from the Village (2002-2007)		
Althaus,	Warren	? 1920?	?	Firefighter		
Anderson,	Ray	06/01/1965	12/01/1968	Firefighter		
Anderson, Jr.	Allan	2004	6/22/2006	Diver	6/22/2006	LODD
Anderson, Sr.	Allan	4/14/1982	1995	Firefighter		
Andrews,	Royal	?	?	Firefighter		
Arnold,	Albert Pat	01/01/1931	?	Chief from 1944-1948		
Babitt,	Lawry "John"	11/26/1969	01/01/1990	Asst. Chief from 6/1/1980 - 1/1/1990		
Baker,	Josh	9/2/1998	2/25/2002	Firefighter		
Barbor,	Jim	01/01/2014	Active	Current Board Member from Wellington Township		
Barbor,	Ralph	? 1970 ?	?	Former Board Member from Wellington Township		
Barlow,	Mike	03/03/10	Active	Firefighter		
Barrick,	Charles	? 1920 ?	?	Firefighter		
Barzyk,	Richard	08/14/1974	08/01/1989	Firefighter		
Beal,	Hugh	1942	06/01/1966	Firefighter		
Bidlake,	Lyle	06/08/1954	01/01/1986	Firefighter	2000	
Biggs,	Jim	09/01/1964	07/31/1974	Firefighter		
Bishop,	Jason	4/3/2002	9/27/2005	Firefighter		
Black,	S.F.	?	?	Chief from 1886-1888		
Boggs,	Jeremy	8/3/2005	10/31/2008	Firefighter		
Bradley,	Ray	?	?	Former Board Member from Pittsfield Township		
Brasee,	Christopher	5/5/1999	11/11/2009	Firefighter		
Brasee,	John	?	?	Former Board Member from Pittsfield Township		
Brasee,	Leroy	?	?	Former Board Member from Wellington Township		
Breneman,	Barry	11/1/2000	9/6/2002	Firefighter		
Brouse,	Kenny P.	? 1923 ?	?	Firefighter		
Brouse,	Kenny R.	1925	12/13/1969	Firefighter; Assistant Chief		
Brouse,	Kenny R.	10/26/1977	2/16/1988	Dispatcher	2/16/1988	
Brown,	Bill	8/14/1991	Active	Firefighter; First Full-time Firefighter hired; Lieutenant from 2/6/2001 to 1/4/2012; Former Association Vice President; Promoted to 2 nd Assistant Chief 1/4/2012		
Brown,	William	? 1915 ?	?	Firefighter		
Buck,	Russ	? 1935 ?	06/01/1955	Firefighter		
Burge,	John	? 1970 ?	?	Former Board Member from Brighton Township		
Burge,	Marlin	? 1970 ?	?	Former Board Member from Wellington Township		
Butler,	Randy	8/3/2005	1/11/2008	Firefighter		
Carlyle,	Bill			Chief from 1897-1901		
Carlyle,	Bill	10/27/1955	05/24/1961	Firefighter		
Case,	Robert	?	?	Former Board Member from Brighton Township		
Chappell,	Wes	7/1/2009	11/2/2011	Firefighter		
Clara,	Frank	01/10/1923	?	Chief from 1948-1956		
Clark,	Earl	? 1923 ?	?	Firefighter		
Clark,	James	10/12/1977	Active	Lieutenant 5/5/1999 - 7/6/2005; Captain 7/6/2005 to 11/30/2011; Promoted to 1 st Assistant Chief 12/1/2011		
Clawson,	John	10/10/1997	Active	Firefighter; Former Association President		
Clodwick,	Henry	? 1923 ?	?	Firefighter		
Clodwick,	Jay	?	?	Firefighter		
Coats,	Lynn	?	?	Chief from 1929-1943		
Comstock,	Harrison	1970	12/31/1991	Clerk	11/18/2011	
Conklin,	Richard	2002	2005	Former Board Member from Brighton Township		
Conrad,	Richard	1/1/1992	12/31/2012	Former Board Member from Penfield Township		
Cowards,	Fred	?	?	Firefighter		
Craner,	Frank	? 1915 ?	?	Firefighter		
Crawford,	David	7/13/1988	Active	Firefighter		
Cross,	Rod	4/14/1982	11/14/1984	Firefighter		
Cypher,	Jeff	1/23/1986	5/31/1988	Firefighter		
Davis,	Lyman	08/08/1945	09/24/1952	Firefighter		
Dickason,	R.	?	?	Firefighter		
Diedrick,	Mark	?	?	Current Board Member from Pittsfield Township		
Dinham,	Foster	? 1923 ?	?	Firefighter		

Dirlam,	F.	? 1923 ?	?	Firefighter		
Dumke,	Art	01/23/1952	02/12/1958	Firefighter	5/30/2011	
Dumke,	Jason	9/4/2013	Active	Firefighter		
Edwards,	Fred	? 1908 ?	?1920?	Chief from 1908-1921		
Edwards,	Lethal (Lum)	2/12/1964	12/08/1971	Firefighter; Former Board Member from the Village	9/4/1998	
Edwards,	William	?	?	Firefighter		
Ensign,	Tom	02/25/1970	1984	Firefighter	1999	
Evans,	Howard E.	01/01/1931	?	Firefighter		
Fahler,	Daniel	05/04/1980	08/25/1982	Firefighter		
Fannin,	Whitey	01/23/1952	04/01/1952	Firefighter		
Farnsworth,	Bob	09/12/1956	03/01/1964	Firefighter		
Farnsworth,	Ed	08/09/1950	09/14/1955	Firefighter		
Farnsworth,	Ken	10/1/1987	8/1/2012	Diver		
Farr,	Joann	01/01/1992	4/1997	Clerk		
Feron,	Jack	01/09/1952	06/24/1963	Firefighter		
Feron,	Jim	1952	02/23/1955	Firefighter		
Fishbaugh,	Gerald	10/4/1995	9/10/1997	Firefighter		
Fisher,	David	3/13/1991	3/31/2011	Firefighter		
Fisher,	Warren A.	?1922?	? 1923 ?	Chief from 1890-1905		
Fisher,	William	? 1923 ?	?	Firefighter		
Fleckenstein,	Jack	04/01/1952	04/20/1953	Firefighter		
Ford,	Perl	? 1915 ?	?	Firefighter		
Foster,	George	1942	02/10/1975	Asst. Chief 12/13/1969 to 2-10-1975; Secretary	2/10/1975	LODD
Frenk,	Greg	5/22/1996	Active	Firefighter; Promoted to Lieutenant 1/4/2012		
Friend,	Charles	01/01/1931	?	Firefighter		
Friend,	Clarence G.	? 1920 ?	?	Firefighter		
Friend,	John	03/25/1931	?	Firefighter		
Friend,	Walter	?	?	Firefighter		
Fulks,	Ray	? 1920 ?	08/1930	Firefighter		
Fuquay,	Melissa	9/4/2013	Active	Firefighter; WFD's first female firefighter		
Gardinier,	Paul	1/2/2003	3/9/2004	Firefighter		
Gardner,	George	5/9/1984	5/17/2012	Firefighter		
Gardner,	Ken	5/10/1989	5/15/1995	Firefighter		
Gariss,	Walter	?	?	Firefighter		
Garn,	Steve	9/4/2013	Active	Firefighter		
Garner,	Jim	1/1981	?	Firefighter		
Gamer,	William	07/13/1966	1967	Firefighter		
Garris,	Kenneth	01/23/1952	12/31/1957	Firefighter		
Gay,	Bert	? 1915 ?	?	Firefighter		
Gibbins,	Martin	?	7/25/1945	Firefighter		
Gill,	Tom	03/13/1968	09/20/1968	Firefighter		
Gillette,	Harry D.	? 1923 ?	?	Firefighter		
Gordon,	Lloyd	1/1/2013	Active	Current Board Member from Penfield Township		
Gott,	Claude	? 1915 ?	?	Firefighter		
Gray,	Garry	7/10/1991	10/10/1997	Firefighter		
Gray,	Jerry	1/22/1986	?	Firefighter		
Gray,	Tom	05/24/1972	7/31/1974	Firefighter		
Grissinger,	Lee	10/26/1960	6/1/1992	Firefighter; Former Department Secretary		
Guiher,	Norm	10/23/1974	12/01/1979	Firefighter		
Hackenbaugh,	George	?	?	Chief from 1893-1894		
Haldeman,	Dan	1/1/1992	?	Former Board Member from the Village		
Hales,	Vanya	4/1/2002	Active	Fiscal Officer		
Hamer,	Bryan	5/5/1999	Active	Firefighter; Former Association Secretary; Current Association President		
Hanny	John	? 1922 ?	?	Firefighter		
Hartman,	Russ	?	?	Firefighter		
Hayes,	Bob	9/2/1998	11/30/1999	Firefighter		
Haynes,	Virginia	?	?	Former Board Member from Wellington Township		
Heyde,	Ken	01/01/2002	12/31/2005	Former Board Member from Huntington Township		
Higgins,	Steve	7/7/2004	Active	Firefighter		
Highland,	William	?	?	Firefighter		
Hildebrand,	William	? 1915 ?	?	Chief from 1922-1928		
Hinkle,	Thadd	7/7/2004	4/21/2011	Firefighter		
Honoshofsky,	Tyler	9/4/2013	Active	Firefighter		
Honoshofsky,Jr.	John	9/14/1988	8/14/2000	Firefighter		
Honoshofsky,Sr.	John	06/28/1972	9/4/1985	Firefighter; Asst. Chief from 1/1981 - 9/4/1985		
Hord,	D.	?	?	Firefighter		
Hulbert,	Chuck	1/13/1988	12/1/1995	Firefighter		
Hyde,	Jeff	1/1/2008	Active	Current Board Member from the Village		
Jackson,	Laurence	?	?	Former Board Member from Penfield Township		
Jacobs,	Glen E.	?1920?	?	Firefighter		
Jameyson,	Lyle	? 1970 ?	?	Former Board Member from Wellington Township		
Jenkins,	Charles	04/08/1964	1969	Firefighter		
Jerousek,	Jim	04/14/1971	7/1/1991	Firefighter; Lieutenant from 6/22/1988 - 7/1/1990; Captain from 7/1990 - 7/1991		

Johnson,	Charles	?	?	Firefighter		
Johnson,	Craig	10/4/2006	11/22/2010	Firefighter		
Johnson,	Paul	? 1951 ?	07/01/1956	Firefighter		
Jordan,	Lawrence	10/26/1960	07/01/1961	Firefighter		
Klaholz,	H.	06/24/1953	09/01/1955	Firefighter		
Knapp,	Bill	04/09/1969	7/23/1975	Firefighter		
Knapp,	David	8/12/1992	2/1/2005	Firefighter		
Knapp,	Ken	10/1/2012	Active	Firefighter		
Knapp,	Orrville	?	?	Firefighter		
Kolbe,	J.	?	?	Firefighter		
Kolbe,	Myron	?	?	Former Board Member from Penfield Township		
Kotowski,	Ted	3/11/1992	6/1/1994	Firefighter		
Ledgard,	Sam	? 1915 ?	?	Firefighter		
Ledgett,	Sam	? 1920 ?	?	Firefighter		
Lent,	Daniel	05/26/1976	1/1/2001	Firefighter; Lieutenant from 2/7/1990 – 8/6/1991; Captain from 8/6/1991 - 1/1/2001		
Lent,	David	08/14/1974	03/03/1999	Firefighter; Lieutenant from 7/25/1990 - 3/3/1999		
Lent,	Gordon	5/4/1980	Active	Firefighter; Former Association President (first)		
Lewis,	Bob	6/27/1945	?	Firefighter		
Lewis,	Darin	4/5/2006	Active	Firefighter		
Linder,	Bill	?1920?	?	Firefighter		
Little,	Ethan	4/3/2002	Active	Firefighter; Current Association Vice President		
Lowther,	Jay	06/01/1985	04/14/1999	Firefighter		
Mackin,	Clyde	01/23/1952	?	Firefighter		
Manning,	Robert V.	04/01/1952	6/1/1980	Firefighter; Asst. Chief from 12/6/1972 - 6/1/1980	10/07/04	
Markel,	Scott	8/10/1988	5/22/2000	Firefighter		
Marley,	Charles	10/11/1968	10/08/1976	Firefighter		
Marley,	Frank	8/10/1988	Active	Firefighter; Former Association Secretary		
Marley,	Tony	9/12/1956	6/30/1990	Firefighter; Asst. Chief from 4/2/1975 – 12/6/1978; Chief from 12/6/1978 – 6/30/1990		
Martin,	?	? 1915 ?	?	Firefighter		
Mazzone,	Terry	12/1/1980	11/1/1997	Firefighter; Department Treasurer		
McAvena,	Dale	1/1/2010	12/31/2013	Former Board Member from Wellington Township		
McCaffrey,	C.H.	? 1923 ?	?	Firefighter		
McCaffrey,	C.P.	?	?	Firefighter		
McClellan,	Art	02/27/1929	? 1931 ?	Firefighter		
McEndree,	Eldon	?	11/12/1952	Firefighter		
McGuire,	Mark	2/1/1990	4/7/1999	Firefighter		
McKenzie	Bill	01/23/1952	01/22/1964	Firefighter		
McKinley,	Ken	4/4/2001	10/10/2001	Firefighter		
McKinney,	Rex	?1920?	?	Firefighter		
McKisson,	Dow A.	? 1923 ?	6/27/1945	Firefighter		
McKisson,	R.C.	? 1929 ?	?	Firefighter		
McQuaid,	Terry	03/13/1968	6/2/1976	Firefighter		
McQuate,	Robert	05/09/1956	3/1/1982	Firefighter	2001	
McQuate,	Robert	10/24/1951	02/13/1952	Firefighter		
Moehl,	Henry	? 1929 ?	?	Firefighter		
Mohrman,	Claude	01/01/1931	6/13/1945	Firefighter		
Moore,	Casey	6/26/1996	Active	Firefighter		
Moore,	Floyd	1939	?	Firefighter		
Moore,	Floyd	1971	?	Firefighter		
Moore,	Floyd	02/10/1988	06/07/1997	Dispatcher	6/17/2012	
Moore,	Ray	? 1951 ?	? 05/1964?	Firefighter		
Moore,	Roger	05/14/1969	05/15/2005	Firefighter; Lieutenant from 10/1985 – 1/1990; Captain from 1/24/1990 – 7/1/1990; Asst. Chief from 7/1/1990 – 5/15/2005		
Morgan,	?	? 1915 ?	?	Firefighter		
Myers,	Gordon	? 1922 ?	?	Firefighter		
Newberger,	E.R.	5/14/1930	?	Firefighter		
Olsen,	Floyd	1946	01/01/1986	Firefighter	9/17/2007	
Oswald,	Derick	9/2/1998	Active	Firefighter; Current Association Treasurer		
Paige,	Dwight	? 1915 ?	?	Firefighter		
Paul,	Roy	?1920?	7/26/1924	Firefighter	7/26/1924	LODD
Peabody,	Vaughn	1922	1922	Firefighter		
Peer,	Mel	?	?	Firefighter		
Perkins,	Kenneth	10/14/1953	12/1/1967	Firefighter	10/1998	
Perry,	Jack	09/12/1956	06/01/1980	Firefighter	12/30/2012	
Perry,	Jim	11/14/1951	12/31/1984	Firefighter		
Pickworth,	Robert	?	?	Former Board Member from Pittsfield Township		
Pitts,	Fred	3/12/1980	7/9/1980	Firefighter		
Pitts,	Troy	2/12/1992	Active	Firefighter; Lieutenant from 3/6/2002 to Present; Former Association Vice President		
Polen,	Tim	9/5/2001	Active	Firefighter; Haz Mat Officer		
Pugh,	M.R.	01/01/1960	09/01/1960	Firefighter		
Randolph,	Gary	10/10/1990	4/21/1991	Firefighter		

Ray,	Bill	?	?	Firefighter		
Ray,	Charles	? 1929 ?	?	Firefighter		
Ray,	Harvey	? 1920 ?	?	Firefighter		
Ray,	Sol	? 1915 ?	10/24/1951	Firefighter; Honorary Member for Life		
Regal,	Chad	2/12/1998	Active	Firefighter; Current Association Secretary; Promoted to Lieutenant 1/4/2012		
Regal,	Scott	7/22/1987	Active	Firefighter; Former Association Treasurer		
Reider,	William	?	?	Firefighter		
Reynolds,	Dusty	7/1/2009	Active	Firefighter		
Reynolds,	Miles	? 1915 ?	?	Firefighter		
Rice,	Kosco C.	? 1920 ?	?	Firefighter		
Rickett,	H.W.	?	?	Firefighter		
Rider	G.W.	?	?	Chief from 1889 – 1890		
Roby,	Dell	04/01/1952	07/01/1955	Firefighter		
Rolfe,	George	01/10/1923	?	Firefighter		
Rollin,	Burt	?	12/31/2001	Former Board Member from Huntington Township		
Rollin,	Walter	1/1/2006	Active	Current Board Member from Huntington Township		
Rollins,	Steve	4/14/1982	10/10/1985	Firefighter		
Ropchock,	Thomas	1/1/1982	11/7/2001	Firefighter; Lieutenant from 1/24/1990 – 3/2001; Captain 3/2001 – 11/2001	11/7/2001	
Rosemark,	Mark	11/08/1978	12/01/1979	Firefighter		
Rosemark,	Mark	2/13/1985	2/9/2004	Firefighter; Haz Mat Officer		
Rosemark,	Mark	11/3/2004	12/31/2006	Firefighter		
Roser,	Dave	7/1/2009	Active	Firefighter		
Rutherford,	Dennis	10/27/1995	8/3/1998	Firefighter		
Sage,	Fred	? 1915 ?	?	Firefighter		
Sage,	Russell	? 1920 ?	?	Firefighter		
Savoy,	Fred	12/01/1953	11/01/1953	Firefighter		
Scott,	Charles	?	?	Firefighter		
Settlemyre,	Martin	01/11/1955	08/01/1956	Firefighter		
Shelton,	Jeff	1/2/2003	1/13/2006	Firefighter		
Shepard,	Charles	?	?	Firefighter		
Shepard,	Clayton	? 1915 ?	?	Firefighter		
Shinsky,	Dan	11/4/1998	Active	Firefighter		
Sickels,	Ben	05/26/1976	8/2/2005	Firefighter; Former Department Secretary/Treasurer; Dispatcher	8/2/2005	
Slack,	Brian	1/12/2000	6/24/2013	Firefighter; Lieutenant from 8/1/2005 to 6/24/2013		
Smith,	Richard	7/1/2009	Active	Firefighter		
Snodgrass,	William	06/08/1954	03/01/1956	Firefighter		
Spicer,	R.T.	?	?	Chief from 1891 – 1892 and 1895 - 1896		
Standen,	Mike	10/1/1012	Active	Firefighter		
Standen,	Tim	10/1/2012	Active	Firefighter		
Stanfield,	Chris	1/1/2006	Active	Current Board Member from Brighton Township		
Stanic,	Daniel	10/27/1995	5/1/1996	Firefighter		
Starr,	W.B.	?	?	Chief from 1882 – 1883		
Stemple,	Sid	?	?	Firefighter		
Storrow,	Tom	1/23/1985	8/12/1987	Firefighter		
Sumpter,	Harold	?	?	Former Board Member from the Village		
Sumpter,	Jack	5/4/1980	8/1/1995	Lieutenant from ?? – 8/1/1995		
Sumpter,	Jack	12/2/1998	8/14/2000	Firefighter		
Tegtmeyer,	Fred	9/1/1993	8/14/2000	Diver		
Thorn,	Ed	7/7/2004	Active	Firefighter		
Thornton,	Ralph	?	?	Firefighter		
Tripp,	Justin	9/4/2013	Active	Firefighter		
Trommer,	Russell	10/14/1953	03/13/1954	Firefighter		
Twining,	Dan	7/7/2004	2/6/2008	Firefighter		
Twining,	Ronald	1970	?	Former and ORIGINAL Board Member from Huntington Township		
Urbansky,	Andy	?	12/31/2005	Former Board Member from Brighton Township	2006	
Varner,	William	9/7/2005	9/4/2013	Firefighter/Dispatcher		
Waite,	Tonya	4/1997	12/31/2002	Former Wellington Community Fire District Clerk		
Walker,	Gary	10/23/1974	07/05/1980	Firefighter		
Walker,	Robert J.	02/14/1973	1/6/2012	Firefighter; Lieutenant from 1/7/1981 – 10/1985; Asst. Chief from 10/1985 – 7/1/1990; Chief from 7/1/1990 to 11/30/2011; Named Chief Emeritus 12/1/2011; First Full-time Fire Chief hired		
Walker,	Robert O.	03/26/1958	12/01/1967	Firefighter		
Ward,	Marion	?	?	Firefighter		
Warren,	Ralph	1/14/1948	?	Firefighter		
Watters, Jr.	Bill	11/4/1998	2/15/2008	Firefighter		
Watters, Jr.	Bill	11/5/2008	6/1/2009	Firefighter		
Weber,	Mark	8/9/1950	7/1/1991	Firefighter	7/1998	
Weber,	Robert	02/27/1946	01/01/1981	Firefighter		
Weber,	William	9/1939	12/06/1978	Firefighter; Chief from 07/11/1956 – 12/6/1978	8/8/2001	
West,	Charles	08/14/1963	06/01/1988	Firefighter; Lieutenant from 6/1/1980 – 6/1/1988		
West,	Rollie	1939	12/01/1972	Firefighter; Asst. Chief 1958-1972		
Wetherbee,	Mike	10/8/1986	Active	Firefighter; Lieutenant from 11/1/1995 – 2/6/2002; Captain 2/6/2002 –		

				7/6/2005; Asst. Chief from 7/6/2005 to 11/30/2011; Promoted to Chief 12/1/2011		
Whitesides,	Harold	? 1920 ?		Firefighter		
Wilcox,	Oron	? 1915 ?	?	Firefighter		
Wiles,	Harold (Stub)	1949	12/31/1984	Firefighter	12/2/2007	
Willbond,	Matt	8/14/1991	10/10/1995	Firefighter		
Williams,	S.A.	?	?	Chief from 1884 – 1885		
Wilzack,	Chet	03/26/1958	12/31/1959	Firefighter	2001	
Wolf,	Bill	6/7/2000	5/2/2008	Firefighter		
Woods,	Calvin	01/01/2002	12/31/2009	Former Board Member from Wellington Township		
Wrench,	Bill	?	?	Firefighter		
Wrench,	Ernie	09/24/1930	6/13/1945	Firefighter		
Wynn,	Carl	? 1922 ?	?	Firefighter		
Yahnke,	Charles	03/13/1954	02/23/1972	Firefighter	1995	
Yates,	Scott	8/14/1991	6/26/1996	Firefighter		
Younglas,	Thomas	1/1/1975	12/31/1991	Former Board Member from Penfield Township		
Zeigler,	Mark	?	?	Former Board Member from Brighton Township		
Zimmerman,	Glenn	06/28/1948	03/01/1963	Firefighter		



Wellington Firefighters Association's Year in Review 2013

By Firefighter Derick Oswald, Association Treasurer

The Wellington Firefighter's Association is a 501-C3, non-profit organization, formed in 2006. The group raises money for local charities, purchase of fire prevention supplies, as well as firefighting and dive equipment. In fiscal year 2013, the Association focused on replacing aged fitness equipment in the workout area at Station #2.

The Firefighter's Association normally holds one major fund raiser each year. The past five years, a "Night at the Races" has been held at the Lorain County Fairgrounds. The following documents many of the activities of the Firefighter's Association in 2013.

- 2013 Night at the Races earnings for the Association was \$10,000

The following are some of the purchases and donations that the association was responsible for in 2013:

- Wellington Fire Department Fire Prevention purchases:
 - \$1,298.31 for fire prevention materials
- Fire Prevention Week Poster Winners
 - \$280.45 to purchase t-shirts for each of the winning posters
- Scholarships
 - Al "Buz" Anderson \$500 scholarship awarded to Wellington High School Senior Madison Bremke
- Wellington Firefighters Chili Cook-Off Team
 - Team participated in the K96 Firefighters chili cook off in Sandusky
 - Team has won numerous other awards for their chili
 - \$2,000 donated to Well-Help, Inc.
- Relay for Life Sponsorship
 - \$1000 donation
- Miscellaneous Donations
 - Raffle an iPad for Gordon Benefit, \$349
 - Autism Speaks donation, \$100
 - Black River Fullbackers donation, \$200
 - Purchased trophies for Lorain County Fair Demolition Derby, \$52
 - Purchased Halloween bags for local children, \$168.74
 - Items for Senior Citizens, \$565
 - Ohio Veterans Home donation in memory of FF Jack Perry, \$100
 - \$1,315 in various gifts



- 5th Annual Firefighter Chili Cook-off
 - In November, the Firefighter's Association continued the challenge of sponsoring a chili cook-off, with the help from five area departments. The benefactor of the evening was Well-Help, Inc. Held at the Wellington Eagles club, the evening was filled with plenty of chili, giveaways, live music and camaraderie.
 - When the evening was completed, the Firefighter's Association gave Well-Help, Inc. a check for \$2,000. While the majority of the Association was involved in some aspect, the evening was a huge success. Several hundred people visited throughout the evening, sampling chili and supporting a great cause.

2013 Wellington Firefighter's Association Charitable Donations: \$7,929.37



Thomas R. Ropchock Award

Recognizing the Wellington Firefighter of the Year

This award is presented to the firefighter who best exemplified the qualities of our mentor and friend, Captain Thomas R. Ropchock. The award has been chosen by the members of the Wellington Firefighter's Association, in recognition of leadership during training and on the fire ground; sacrifices of time away from family; devotion and commitment to the Fire District; and for setting a positive example for others to follow.

The 2013 Thomas R. Ropchock Firefighter of the Year award has been awarded to Firefighter Dave Crawford. Dave has been a member of the department since June 1988. Dave is also the first member of the department to be awarded the honor twice.

In addition to his firefighting duties, Crawford is also an EMS First Responder and serves as the primary EVT and pump operation trainer.

Most recently, the retired truck driver has taken on the task of servicing and maintaining the Fire District's apparatus, saving thousands of dollars in labor.

When not at the fire department, Dave and his wife Pam are avid campers and Harley riders.



SECTION II: DISTRICT FINANCES

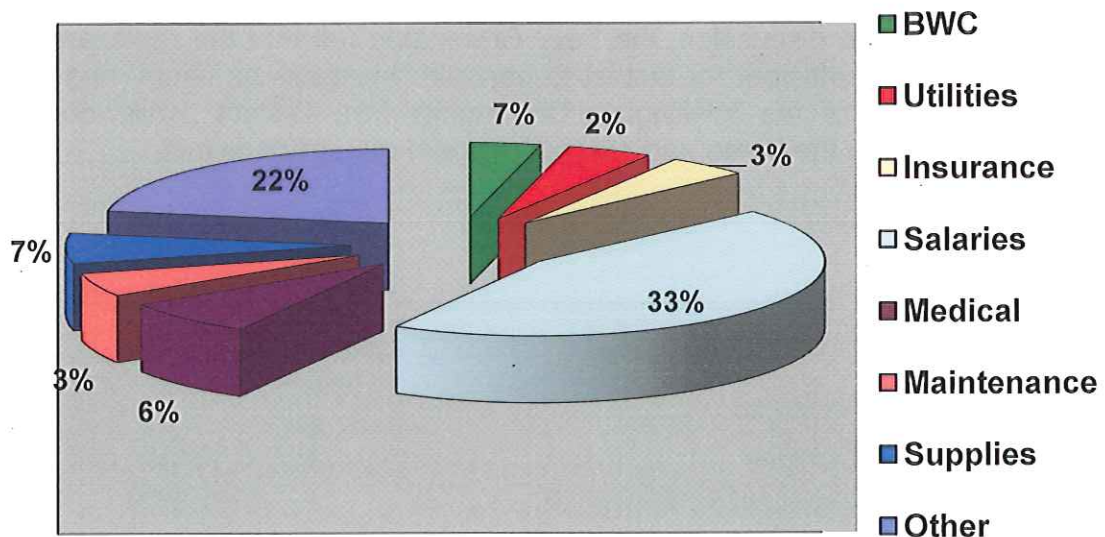
Current Financial Status

By Vanya Hales, Fiscal Officer

The Wellington Fire District total budget for fiscal year 2013 was \$726,160. It is anticipated that for fiscal year 2014, the current 2.5 mill levy and the District's investments will generate \$664,453. The current operating levy costs the owner of a \$150,000 home approximately \$115 annually, the levy funds are used for vehicle maintenance, salaries of full-time and part-time employees, building maintenance, and training.

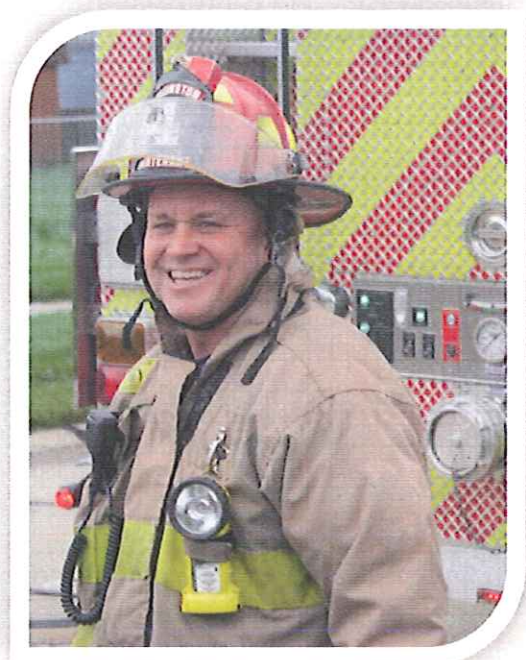
	2008	2009	2010	2011	2012	2013	2014 (estimate)
Revenue:	\$743,762	\$701,431	\$740,265	\$766,666	\$790,350	\$714,593	\$664,453
Expenses:	\$656,589	\$639,305	\$915,981	\$737,578	\$555,909	\$499,079	\$637,340
Workers Compensation:	\$11,670	\$12,564	\$14,377	\$50,633	\$53,451	\$19,870	\$24,000
Utilities:	\$25,611	\$14,406	\$19,072	\$15,785	\$14,590	\$24,237	\$24,000
Insurance:	\$19,225	\$20,049	\$19,386	\$20,882	\$22,568	\$23,018	\$24,000
Salaries:	\$243,961	\$247,610	\$225,937	\$240,130	\$247,889	\$223,895	\$284,000
Medical Insurance:	\$40,633	\$49,189	\$45,036	\$41,192	\$36,589	\$38,700	\$46,200
Maintenance:	\$33,329	\$33,536	\$29,465	\$24,128	\$11,979	\$25,480	\$30,000
Supplies:	\$44,801	\$41,712	\$56,763	\$48,436	\$33,305	\$33,173	\$30,000
Other Expenses:	\$237,329	\$220,239	\$505,945	\$295,362	\$135,529	\$110,706	\$170,040

2013 Expenses



Building and Grounds Report

By Lieutenant Troy Pitts



During 2013 the building and grounds committee began to research the replacement of the cracking and deteriorating concrete in bays 1,2,&3 of station two. Along with replacing the floor it has been determined that the brick veneer on station two will need to be repaired in numerous areas (it has begun to lean away from the structure)

After bids were received and reviewed to replace the floor it was decided to hold off on both projects at this time and review in 2014. The cost of the project will be approximately \$26,000 - \$32,000.

Other than reviewing the floor and brick work normal routine maintenance took place.

On May 4, 2010 the citizens of the Wellington Community Fire District voted on, and approved a 2.50 mil tax levy. This levy, which makes up approximately 99% of the budget, allows the district to

maintain our maintenance, training and station coverage program. The replacement of Engine 150 purchased in 1984, while a large expenditure (\$398,000); was the largest expenditure for the five year levy. The new engine was built to the district's specifications, such as, a larger cab for four riders as opposed to two; a larger 2000 gpm pump as opposed to the 1250 gpm pump; more storage compartments equipment. The engine was delivered in July of 2011.

Through research and discussion, the Levy Committee felt that the replacement levy that was requested would be sufficient for district to conduct "business as usual" and maintain the high standards expected of the Wellington Community Fire District, while not placing a large monetary burden onto the home and property owners of our fire district.

Fire Levy Summary

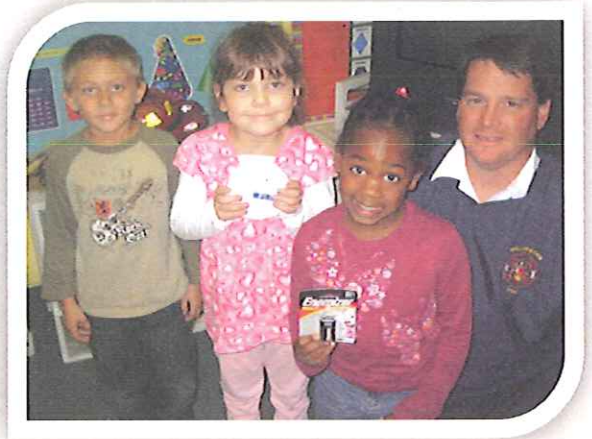
Millage.....	2.50
Length.....	5 years
Generates Annually.....	\$696,209
Annual Cost for \$100,000 home.....	\$76.56
Annual Cost for \$150,000 home.....	\$ 114.88

SECTION III: FIRE PREVENTION

2013 Fire Prevention Overview

By Assistant Chief Bill Brown

Fire prevention remains one of the most beneficial functions of any fire department. Whether performing fire safety inspections or simply teaching a kindergarten class about the importance of fire safety, the benefits are immense to all parties involved. The Wellington Community Fire District Fire Prevention program is comprised of two distinct activities, public education and fire safety inspections, both of which are important to the safety of the community, but also to the firefighters.



The District's Fire Prevention Program has four distinct parts, each important in its own way. Public Education, Fire Safety Inspections, Car Seat Safety Checks, and the Juvenile Fire Setters program reach different segments of our service area, with some overlapping depending upon age.

Public Education

Annually, Wellington Community Fire District personnel routinely spend countless hours teaching to students, senior citizens, scouting groups, and others. In 2013, 463.5 hours were dedicated to educating the public on fire safety. The following locations were sites of fire safety talks, demonstrations, and visits:

Wellington Country Preschool
Westwood Elementary
McCormick Middle School
Wellington High School
Step-by-Step Preschool
Findley State Park
Lorain County Metro Parks

Weber Healthcare
St. Patrick's Manor
Wellington Senior Citizen's
Office of Aging (SSO)
Lorain County JVS
Firelands Area Council (BSA)
Relay for Life

One of our most valuable fire prevention teaching tools is a fire extinguisher trainer. This unit was purchased with funding through FEMA's Assistance to Firefighters Grant program. Fueled by propane, the unit is controlled by fire personnel, allowing the students to "fight" a wastebasket fire, or other included props.

The training unit adds a great deal of safety to the training program and enables hundreds of students to participate for little cost to the group. The unit was utilized to teach over 250 students, teachers, bus drivers and healthcare workers in 2013.

All told, Fire District personnel performed 463.5 hours of education, to thousands of individuals in 2013. The following personnel continue to help further our message by providing quality fire safety programs to our citizens:

Chief Mike Wetherbee	35.5	AC Bill Brown	32
FF Dave Crawford	30	FF Derick Oswald	29
Lt. Troy Pitts	27	FF Ken Knapp	25
FF Mike Barlow	22	FF Gordy Lent	21.5
FF Tim Standen	20.5	FF Ethan Little	18.5
Lt. Greg Frenk	18	FF Rich Smith	17.5
FF John Clawson	16.5	Lt. Chad Regal	15
FF Scott Regal	13	FF Steve Higgins	11
AC Jim Clark	11	Dave Roser	10
FF Darin Lewis	9.5	FF Bryan Hamer	9
FF Mike Standen	9	FF Tyler Honoshofsky	8
FF Ed Thorn	8	FF Tim Polen	7.5
FF Dan Shinsky	6.5	FF Jason Dumke	5
FF Melissa Fuquay	5	FF Steve Garn	5
FF Casey Moore	5	FF Justen Tripp	5
FF Bill Varner	4	FF Dusty Reynolds	4

Since 2007, five members of the department have distinguished themselves in the area of Fire Prevention and Public Education. These members have accounted for 32% of the total hours (1,858 total hours) in the seven year period and their dedication to educating the general public is evident.

AC Bill Brown	260.75 hrs
FF Ethan Little	125.25 hrs
FF Derick Oswald	133.75 hrs
Chief Mike Wetherbee	137.75 hrs
AC Jim Clark	80.50 hrs



Fire Safety Inspections

The elimination of hazards which are prone to causing fires is the primary goal of the Wellington Community Fire District's Fire Safety Inspection program. Annually, Certified Fire Safety Inspectors visit local businesses, factories, and schools to perform inspections which focus not on punitive measures, but corrective measures.



Each of the six schools in the district, as well as the industrial complexes, and many of the retail locations receive at least one visit from an inspector annually.

In 2013, a total of 74 inspections were completed by one of the districts seven inspectors. Not included in that total are the several hundred inspections that are completed at the Lorain County Fair in August.

Car Seat Safety Checks

For several years, a growing trend had developed in our service area. Parents who were in need of a child car seat inspection/evaluation were unable to access this valuable service without traveling to Elyria. In response to this problem, Firefighter/Medic Derick Oswald participated in a forty hour certification course, becoming the Wellington Community Fire District's first Child Car Seat Safety Technician in May of 2008.



Throughout 2013, Firefighter Oswald, aided by other personnel, conducted three "drive-by" inspections, one in Grafton Village. Additionally, Firefighter Oswald met on numerous other occasions with concerned parents to inspect/install their child safety seats.

	2008	2009	2010	2011	2012	2013
Cars Inspected:	23	38	38	31	49	38
Seats Inspected:	28	52	51	38	44	33
Seats Replaced:	5	14	23	15	6	5

Again, the Wellington Community Fire District's continued efforts to provide quality programs, with involvement from the community, insure safety of the residents.

Juvenile Fire Setters Program

The purpose of the District's Juvenile Fire Setters Program is to identify children at-risk by looking at how and why the fire happened and to recommend prevention programs for fire setters who were motivated by accident, curiosity, or experimentation.

This program, which has been in place since 2008, can be used in conjunction with local law enforcement issues, the juvenile court system, or by direct referral by a concerned relative. The program, headed by Assistant Chief Bill Brown and Firefighter/Medic Derick Oswald is not only available to residents of the Wellington Community Fire District, but also to surrounding departments who may not necessarily have the resources for such a program. The goal of the program is to help evaluate, educate, and recommend services that may stop fire setting behavior and identify any related problems the juvenile may have.

SECTION IV: INCIDENT STATISTICS

2013 Major Incidents

By Assistant Chief Jim Clark

01/04/13 At 19:14 we responded to a MVA, car vs. house at 16830 Rt. 58. A car had struck the North East corner of the house. A minor injury to the driver and, no one was injured inside the home.

01/11/13 At 22:46 AC Clark and FF Lewis were working the Friday night shift when we heard WPD officer come over the radio saying shots were being fired downtown. We could hear them at Station 2 and we didn't know whether to duck under the counter or go outside and see what was going on. About that time the frantic officer came back on the radio stating it was a box of fireworks in the street in front of Big Dogs. A couple minutes later we were called to put out the smoldering box. We still tease the officer when he stops by on Friday nights.



01/22/13 At 05:00 we were called to 28099 Rt. 58 for a structure fire. Upon arrival we found smoke in the home and the chimney was the issue. The chimney was defective and fire had breached the chimney and started getting into the wall. Minor damage was sustained to the structure.

02/05/13 We were called to Forest City Technologies on Maple Street at 19:49; upon arrival we found an oven fire producing quite a lot of smoke. We had shot several fire extinguishers into the oven with no luck. We laid lines into the plant from the east parking lot to the west side of the building to extinguish the fire. The oven was a total loss and the room was heavily smoke damaged; however no structural damage was done to the building.

02/16/13 At 17:50 we responded to a chimney fire at 23076 Foster Road. Upon arrival we encountered a homemade bridge we had to cross to get to the structure. This bridge has been the topic of many discussions at the Fire Board Meetings over the past several years. The bridge was ok and we crossed it without too much trouble, although it was a tight fit for a fire truck. We had firefighters on the roof and inside the structure and cleaning out the chimney, minor damage to the chimney. Firefighter Crawford fell on the ice and was treated by SLCAD on scene.

02/19/13 We provided mutual aid to Camden Fire for a structure fire at Green Circle Growers on Rt. 511 & Rt. 20. We supplied Ladder 150, Engine 153, and Tanker 157 along with 11 personnel. These officers and firefighters were on scene from 17:54 to 06:30 the next morning.

03/05/13 At 20:26 we responded to a CSX Engine on fire at the Webster Rd. crossing. Upon arrival we found Engine 5111 smoking heavily. We put firefighters on top of the engine and they started disassembling the sheet metal panels around the generator to gain access in order to extinguish it. Mutual Aid from LaGrange Fire was received.

- 03/06/13 At 11:57 we responded to the CSX crossing at Barker St. in the village for a medical emergency. The Conductor had become ill and we removed him from the train and assisted SLCAD. The Conductor was life flighted by Metro Lifeflight from Maple Street.
- 03/14/13 At 15:11 we responded to Hemlock Cottage at 601 S. Main for a structure fire. Upon arrival we found smoke inside R&B Glass adjacent to Hemlock. Upon further investigation we found a small fire in the attic and extinguished same. Further investigation revealed an electrical issue in the attic. Minor smoke and water damage was reported.
- 03/23/13 At 07:29 we provided mutual aid to Grafton Twp. The dive team responded to a reported car submerged in a pond with occupants inside. The Lorain County dive team responded to this incident as well.
- 04/09/13 At 16:35 we responded to the Mosey Inn at 203 N. Main St., upon arrival we had light smoke. We checked the building with a Thermal Image Camera (TIC) and found nothing. As we checked the residences upstairs we found that all the smoke detectors had no batteries in them. The residents all stated the smoke detectors go off every time they cook and the owner will not resolve the issue. We discussed the issue with the owner and then turned the incident over to Chief Wetherbee to follow up on.
- 04/13/13 At 10:37 we responded to Salon Image at 183 Depot St. for a tanning bed fire. Upon arrival we found smoke in the building, all occupants were outside. Upon investigation we learned the tanning bed had been repaired recently. The wiring on the backside of the tanning bed had been melted. We unplugged the unit and advised the owner to contact the company that had repaired it.
- 04/13/13 At 14:31 we responded to a chimney fire at 42544 Jones Rd. Using chimney bombs and chains we were able to extinguish the fire. The chimney sustained heavy damage and will need to be replaced.
- 04/20/13 At 01:32 we responded to a structure fire at 45181 Rt. 18, upon arrival we found an elderly man using an oxygen machine had been smoking and the cigarette had ignited the oxygen hose burning the carpet inside the trailer.
- 05/10/13 At 00:42 we responded to a structure fire at 45181 Rt. 18, upon arrival we found the trailer fully engulfed in flames. This is the same residence we were at on 04/20/13. SLCAD was returning from a call and noticed the fire and called WPD. After we extinguished the fire we found that the occupant had perished in the fire. Chief Wetherbee, the Coroner and the State Fire Marshall's office were contacted.
- 06/04/13 At 04:27 we were called to 20072 Pitts Rd. for a reported structure fire. Upon arrival we found a strip cord covered with clothing had caught on fire. Minor damage was reported.
- 06/26/13 At 20:38 we responded to a car fire on Gore Orphanage Rd. just south of Rt. 18. We finally found the car fire at 25599 Gore Orphanage Rd. well into Rochester's fire district. We extinguished the fire, contacted Rochester Fire. We then asked

Rochester to bring a tanker to the scene; the fire didn't want to go out with all the aluminum and other metals the fire kept reigniting.

- 07/03/13 At 23:00 we responded to the Wellington up ground reservoir for a possible missing child. Upon arrival we talked to a man who stated he kept hearing someone hollering for help in the water. We put the boat and firefighters in the water to start searching. The little girl and her mother came back to the reservoir and stated the girl had gotten separated from the group she was with while watching the fireworks show. The voice the man had heard was others searching for the little girl and hollering her name.
- 07/25/13 We responded to the intersection of Baker Rd. and Stewart Rd at 00:51. A utility truck with a boom on the rear of it was caught up in the wires overhead. It appears the boom had extended up on its own and had taken down wires from Quarry Rd. to Baker Rd. and when the truck went to turn onto Baker Rd. the boom caught the communications wires and had torn part of the bed off the truck and it was stuck in the wires. This was a first that any of us can remember on the department.
- 08/04/13 At 10:18 we responded to 43191 Jones Rd. for a man who had been injured in a farming accident. We assisted SLCAD and set up a landing zone for Metro Lifeflight.
- 08/16/13 We responded to Frontier Phone at 167 E. Herrick Ave. at 17:40. We found a light smoke in the building and found light ballast causing the issue. A phone company employee unwired the light.
- 10/02/13 We responded to 317 ½ Courtland St. for a possible structure fire. Upon arrival crews found a fire in the attic and extinguished same. It is believed to be from an electrical issue.
- 10/30/13 At 13:28 we responded to the Wellington High School for a bomb threat. No bomb was found.
- 11/03/13 At 10:41 we responded to the Methodist Church at 127 Park Place, a car had struck the gas meter and the church, minor injuries to the driver. Gas was turned off until it could be repaired.
- 12/04/13 At 10:30 we responded to 47584 Bursley Rd. for a reported vehicle in a pond. Divers suited up and went into the pond and hooked up a cable so the vehicle could be removed from the water by the wrecker. Unfortunately, inside was the driver who had been missing for several days. LCSO was on scene as well.
- 12/13/13 At 18:44 we responded to 43838 Webster Rd. for a reported structure fire. Upon arrival Chief Wetherbee was on scene and stated the fire was smoldering in the garage and water was spraying in the area. Above where the fire started was a ¼" plastic water line for the ice maker and the fire had melted the water line and it acted as a sprinkler head and extinguished the fire. This could have been a large fire if it weren't for this water line. Minor smoke damage to the home and some loss of appliances and equipment due to the fire. The home owners were having some wood working refinished in the home at the time and it is believed that the pile of rags used for staining were what started the fire.

- 12/17/13 We responded to McDonalds at 800 N. Main St at 16:00 for a reported grease fire. The fire was out upon arrival, employees used the fire extinguisher to put out the fire. We checked the roof and around the unit for fire extension, nothing found.
- 12/21/13 At 17:40 we responded to Foster Rd. and Indian Hollow Rd. for a car in the water and a person trapped inside. Upon arrival the occupant was out and safe.
- 12/21/13 At 21:05 we responded to 42544 Jones Rd. for a chimney fire. Upon arrival we found the house was smoked up, we put a crew on the roof and a crew in the home. We found the cap on the chimney was plugged and the chimney was cleaned out using chains. This was the same residence we responded to on 04/13/13. The chimney had been replaced since the last chimney fire.
- 12/21/13 At 21:54 we were called to Jones Rd. just east of Rt. 301 for two cars stuck in the water with occupants inside the cars. We were just about $\frac{3}{4}$ of a mile west for the chimney fire; we called back to the station to have the dive trailer brought out to the scene. Once on scene we found two females on the bridge by their cars and water on both sides of the bridge. Once their parents arrived on scene we were able to communicate with one of the girls to advise her how we were going to rescue them. We set up a safety team on Rt. 18 to act as our catch point for anyone who might get swept downstream. Once our backup was in place we sent four firefighters with the boat to go get the girls. Once the girls were safe on dry land we turned the girls over the State Highway Patrol.



Incident Types

	2004	2005	2006	2007	2008	2009	2010	2011	2012	2013	%
Medical Assist	66	65	89	52	89	85	84	86	81	79	22%
Vehicle Accident	87	79	98	88	86	83	73	64	84	73	20%
False Alarms	39	42	41	52	39	41	53	50	37	57	16%
Good Intent	25	42	36	54	50	38	42	45	63	47	13%
Hazardous Condition	38	46	56	44	52	37	34	40	49	35	10%
Building Fire	22	15	27	19	24	21	30	16	34	18	5%
Miscellaneous	39	30	12	14	17	12	23	21	20	16	4%
Unauthorized Burning	18	16	15	8	22	22	13	9	10	12	3%
Carbon Monoxide	15	14	6	10	19	4	3	4	4	8	2%
Vehicle Fire	9	11	8	11	10	8	12	7	9	6	2%
Water/Ice Rescue	4	2	8	4	4	1	1	4	5	5	1%
Chimney Fire	1	9	3	4	10	7	1	2	5	4	<1%
Fire, other	15	9	12	15	12	12	5	8	5	3	<1%
Grass Fire	6	13	13	9	4	8	4	2	9	1	<1%
Severe Weather	3	1	3	0	10	1	0	5	1	0	0%
Overpressure	1	0	0	0	0	4	0	1	1	0	0%
Animal Rescue	4	3	4	1	1	2	1	0	1	0	0%
Totals	392	397	431	385	449	386	379	364	418	364	

Incidents by District / Dollars Saved Versus Lost

	Prior Value	\$\$ Lost	\$\$ Saved	% Saved
Brighton Township	n/a	n/a	n/a	n/a
Huntington Township	\$82,160	\$11,000	\$71,160	87%
Penfield Township	\$227,300	\$1,500	\$225,800	99%
Pittsfield Township	\$138,910	\$500	\$138,410	99%
Wellington Township	\$196,280	\$16,800	\$179,480	99%
Wellington Village	\$14,764,020	\$32,500	\$14,731,520	99%

Incident Alarm Time

	2001	2002	2003	2004	2005	2006	2007	2008	2009	2010	2011	2012	2013
6:00am to 5:59pm	180	185	228	236	224	284	247	285	249	228	236	259	235
6:00pm to 5:59am	97	107	138	138	157	147	138	164	137	151	122	159	129

Average Personnel Turnout

Shift	2001	2002	2003	2004	2005	2006	2007	2008	2009	2010	2011	2012	2013
Day Shift	11	8	7	7	6	7	8	6	7	5	6	6	6
Night Shift	13	13	11	10	10	9	9	8	7	7	6	7	9
All Calls	11	9	9	11	11	10	10	8	8	9	7	8	9
Officer Calls	3	3	2	3	3	2	2	2	2	2	2	3	3
First Responder	2	4	4	4	4	3	4	3	3	3	2	3	3
Structure Fire	11	12	15	14	15	13	15	10	11	11	9	11	10
Alarms	9	8	10	7	8	7	7	6	7	7	7	6	6
Overall Average	9	8	9	8	8	7	8	6	6	6	6	6	7

Calls by Day of Week

	2007		2008		2009		2010		2011		2012		2013	
Sunday	43	11.2%	58	12.9%	47	12.2%	55	14.5%	40	11.1%	50	11.9%	53	14.6%
Monday	78	20.3%	41	9.1%	55	14.2%	59	15.5%	52	14.5%	60	14.3%	49	13.5%
Tuesday	55	14.3%	76	16.9%	72	18.7%	55	14.5%	57	15.9%	63	15.1%	52	14.3%
Wednesday	47	12.2%	58	12.9%	61	15.8%	53	13.9%	44	12.2%	66	15.8%	59	16.2%
Thursday	55	14.3%	69	15.3%	46	11.9%	59	15.5%	52	14.5%	49	11.7%	46	12.6%
Friday	60	15.6%	86	19.1%	60	15.5%	57	15.0%	55	15.3%	68	16.3%	55	15.1%
Saturday	47	12.2%	61	13.5%	45	11.7%	42	11.0%	58	16.2%	62	14.8%	50	13.7%

Unit Response Summary

	2001	2002	2003	2004	2005	2006	2007	2008	2009	2010	2011	2012	2013
Engine 150	n/a	n/a	n/a	n/a	n/a	n/a	n/a	n/a	n/a	n/a	86	187	170
Ladder 151	n/a	n/a	n/a	n/a	n/a	48	56	41	34	38	33	39	28
Truck 152	78	73	96	106	156	184	146	183	167	147	148	172	160
Engine 153	14	148	195	180	167	211	206	183	176	176	96	32	36
Rescue 154	151	128	157	137	122	144	131	141	130	107	111	127	106
Rescue 156	134	131	157	153	150	176	161	161	149	146	131	145	128
Tanker 157	15	36	35	22	31	41	27	35	31	35	23	28	32
Command 159	119	83	127	115	156	84	86	98	72	54	47	124	87

Unit Response Delays Due to Trains

	2001	2002	2003	2004	2005	2006	2007	2008	2009	2010	2011	2012	2013
Train Delays	18	12	17	31	22	14	4	2	6	3	3	4	1

Average Response Time by District, Structure Fires

	2003	2004	2005	2006	2007	2008	2009	2010	2011	2012	2013
Brighton Township	7:00	10:00	10:00	9:00	6:00	10:00	5:30	5:00	9:00	10:00	N/A
Huntington Township	7:15	6:00	9:00	8:48	10:00	7:30	21:00	9:30	9:00	10:20	11:00
Penfield Township	7:40	7:30	8:00	N/A	6:30	7:30	12:00	N/A	7:30	9:40	12:30
Pittsfield Township	8:00	6:00	7:00	10:40	9:00	6:00	8:00	7:24	7:00	7:20	6:00
Wellington Township	5:00	2:00	5:00	5:20	5:40	3:30	4:00	7:12	11:30	N/A	8:00
Wellington Village	2:50	2:44	3:30	2:05	2:05	3:00	3:15	2:30	3:30	2:53	4:45

Average Response Time by District, Motor Vehicle Accidents

	2003	2004	2005	2006	2007	2008	2009	2010	2011	2012	2013
Brighton Township	6:00	8:30	8:00	6:30	7:00	8:30	10:45	8:40	7:45	5:15	7:15
Huntington Township	6:50	8:40	8:00	7:51	8:32	5:30	7:15	7:23	9:10	10:20	9:45
Penfield Township	5:50	8:00	7:25	7:08	7:17	6:15	7:30	7:36	7:40	8:25	7:45
Pittsfield Township	6:20	7:55	8:30	9:02	8:55	8:15	8:30	9:25	9:45	9:15	9:05
Wellington Township	4:10	4:10	4:20	5:48	3:45	3:45	3:45	5:18	6:25	7:30	5:05
Wellington Village	3:40	3:25	2:50	3:30	2:12	3:15	3:45	2:40	2:45	1:46	2:30

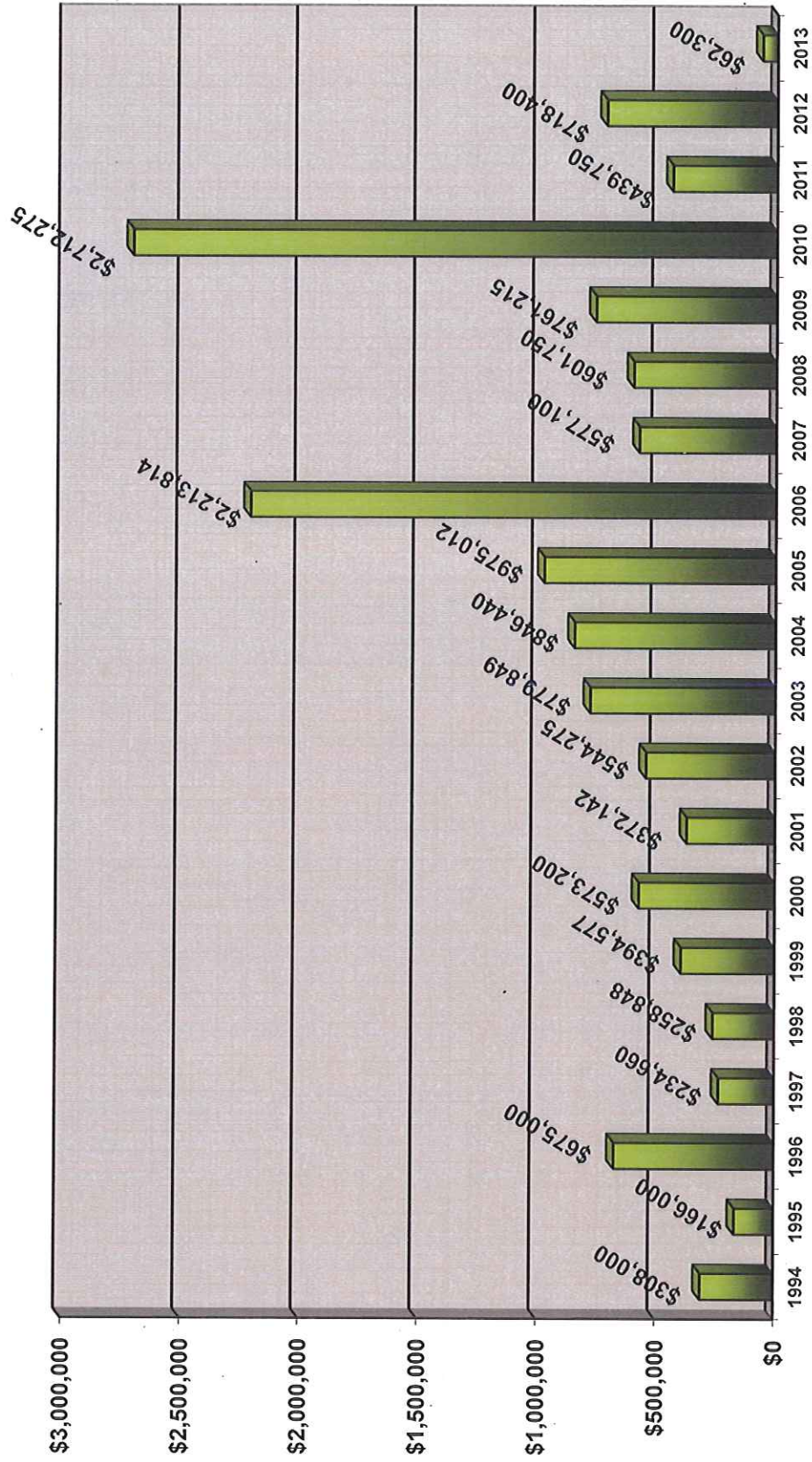
Average Response Time by District, First Responder Calls

	2003	2004	2005	2006	2007	2008	2009	2010	2011	2012	2013
Brighton Township	7:00	7:45	N/A	10:30	9:00	7:00	8:00	N/A	9:00	7:30	8:05
Huntington Township	9:00	10:00	7:35	10:40	n/a	6:45	8:00	11:24	9:30	11:20	11:00
Penfield Township	8:00	7:36	N/A	9:12	6:40	8:30	3:00	7:48	8:05	9:00	8:00
Pittsfield Township	8:45	10:10	8:45	6:30	6:00	8:45	9:00	10:42	10:30	9:20	9:05
Wellington Township	4:00	3:00	3:30	5:20	7:00	5:00	5:00	3:36	4:30	6:00	3:45
Wellington Village	2:50	2:24	3:00	2:52	2:44	3:15	2:00	3:20	3:50	2:41	2:16

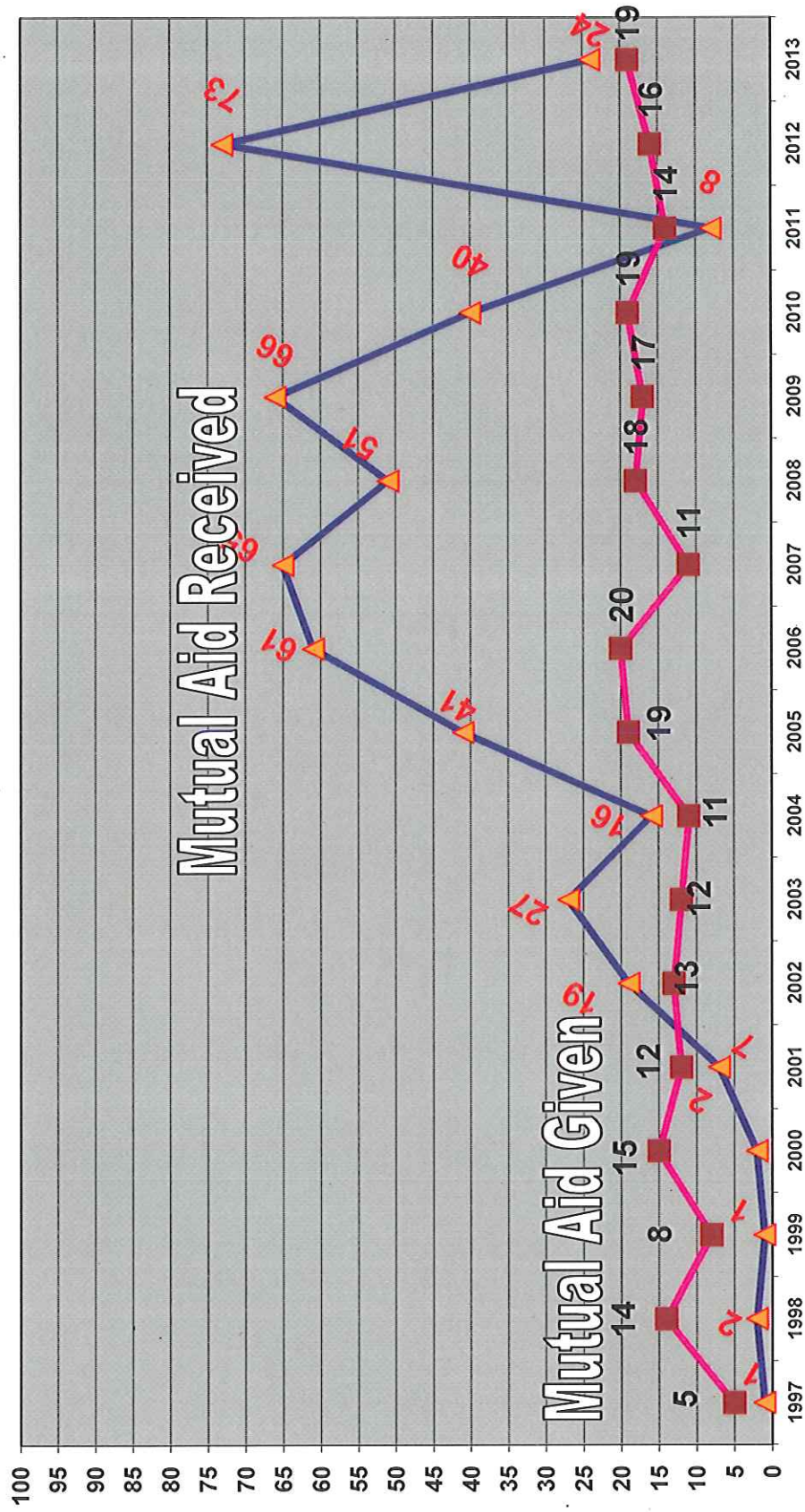
Annual Incidents Summary



Incident Dollar Loss Summary



Mutual Aid Response Summary



Wellington Fire District
Annual Incidents / Dollar Loss
By Township

Brighton Township	2005	2006	2007	2008	2009	2010	2011	2012	2013
Incidents	15	23	21	24	21	18	24	13	21
\$ Loss	\$0	\$290,000	\$11,100	\$0	\$244,200	\$9,500	\$5,500	\$45,000	\$0

Huntington Township	2005	2006	2007	2008	2009	2010	2011	2012	2013
Incidents	46	38	29	37	38	24	18	27	24
\$ Loss	\$1,700	\$373,204	\$3,500	\$151,500	\$3,200	\$91,000	\$1,050	\$130,000	\$11,000

Penfield Township	2005	2006	2007	2008	2009	2010	2011	2012	2013
Incidents	41	46	36	44	39	30	38	51	37
\$ Loss	\$5,000	\$0	\$500	\$56,325	\$10,500	\$7,000	\$700	\$88,000	\$1,500

Pittsfield Township	2005	2006	2007	2008	2009	2010	2011	2012	2013
Incidents	56	69	53	86	63	74	74	79	55
\$ Loss	\$671,237	\$344,800	\$750	\$141,200	\$15,000	\$2,604,775	\$218,000	\$294,000	\$500

Wellington Township	2005	2006	2007	2008	2009	2010	2011	2012	2013
Incidents	48	61	44	51	41	46	37	42	37
\$ Loss	\$15,700	\$735,500	\$5,000	\$5,325	\$209,550	\$195,100	\$214,500	\$9,000	\$16,800

Wellington Village	2005	2006	2007	2008	2009	2010	2011	2012	2013
Incidents	156	171	179	174	149	154	145	167	164
\$ Loss	\$281,375	\$470,310	\$556,250	\$247,400	\$278,765	\$4,450	\$49,800	\$152,400	\$32,500

Wellington Fire District
Monthly Incident Report
Alarm Date Between {01/01/2013} And {12/31/2013}

Incident-Exp#	Alm Date	Twp/Village	Location	Incident Type
13-0000001-000	01/01/2013	PESW	22525 WEST RD	746 Carbon monoxide detector activation, no CO
13-0000002-000	01/02/2013	PISW	STATE RTE 58 & MERRIAM RD	3221 MVA c/ Scene Safety; No Transport
13-0000003-000	01/03/2013	VSE	201 SOUTH MAIN ST /A/H/L	311 Medical assist, assist EMS crew
13-0000004-000	01/03/2013	VNE	194 WEST HERRICK AVE /A/SC	411 Gasoline or other flammable liquid spill
13-0000005-000	01/04/2013	VSW	739 PARKSIDE RESERVE ST	733 Smoke detector activation due to malfunction
13-0000006-000	01/04/2013	HSW	25600 STATE RTE 58	652 Steam, vapor, fog or dust thought to be smoke
13-0000007-000	01/04/2013	PINW	47574 STATE RT 301	3221 MVA c/ Scene Safety; No Transport
13-0000008-000	01/04/2013	PINW	16830 STATE RTE 58 /OBERLIN, OH 44024	3221 MVA c/ Scene Safety; Light Extrication; Transport
13-0000009-000	01/09/2013	VNW	616 NORTH MILL ST	511 Lock-out
13-0000010-000	01/09/2013	VSW	102 WEST HERRICK AVE /A	743 Smoke detector activation, no fire - unintentional
13-0000011-000	01/09/2013	OFD 14	143 EAST COLLEGE ST /OBERLIN, OH 44004	4404 Dispatched & cancelled en route
13-0000012-000	01/10/2013	VNW	619 NORTH MAIN ST	412 Gas leak (natural gas or LPG)
13-0000013-000	01/11/2013	BNW	STATE RTE 18 & STATE RTE 511	3222 MVA c/ Scene Safety; Light Extrication; Transport
13-0000014-000	01/11/2013	VNE	194 WEST HERRICK AVE /A/SC	561 Unauthorized burning
13-0000015-000	01/12/2013	PINW	48199 STATE RTE 20 /A/L/SW/OBERLIN, OH 44004	745 Alarm system activation, no fire - unintentional
13-0000016-000	01/14/2013	VSW	586 PARKSIDE RESERVE ST	743 Smoke detector activation, no fire - unintentional
13-0000017-000	01/16/2013	VSE	115 WILLARD MEMORIAL SQ /A	745 Alarm system activation, no fire - unintentional
13-0000018-000	01/16/2013	VSE	508 DICKSON ST	412 Gas leak (natural gas or LPG)
13-0000019-000	01/16/2013	VSW	138 BENNETT ST	554 Assist invalid
13-0000020-000	01/16/2013	WSE	FIELD, ON JONES RD, NW OF WEST	631 Authorized controlled burning
13-0000021-000	01/19/2013	VNW	224 NORTH MILL ST	424 Carbon monoxide incident
13-0000022-000	01/19/2013	BNE	SR 18, 100 YDS WEST OF 48683	3221 MVA c/ Scene Safety; No Transport
13-0000023-000	01/19/2013	PINE	45721 STATE RT 20 /OBERLIN, OH 44004	311 Medical assist, assist EMS crew
13-0000024-000	01/19/2013	VSE	115 WILLARD MEMORIAL SQ /A	743 Smoke detector activation, no fire - unintentional
13-0000025-000	01/22/2013	HSE	28099 STATE RTE 58 /SULLIVAN, OH 44880	411 Building fire
13-0000026-000	01/22/2013	VNW	629 NORTH MAIN ST /A/H/L	445 Arcing, shorted electrical equipment
13-0000027-000	01/22/2013	VNE	111 EAST HERRICK AVE /H	520 Water problem, Other
13-0000028-000	01/23/2013	LAG 15	42578 WEBSTER RD /LAGRANGE, OH 44130	4404 Dispatched & cancelled en route
13-0000029-000	01/25/2013	WSE	297 CEMETERY RD	3221 MVA c/ Scene Safety; No Transport
13-0000030-000	01/25/2013	VSW	361 PROSPECT ST	311 Medical assist, assist EMS crew
13-0000031-000	01/26/2013	PESE	STATE RTE 301 & JONES RD	3221 MVA c/ Scene Safety; No Transport
13-0000032-000	01/27/2013	PENW	WHITEHEAD RD & PECK WADSWORTH RD	3221 MVA c/ Scene Safety; Light Extrication; Transport
13-0000033-000	01/27/2013	VNE	816 NORTH MAIN ST /H/L/SW	154 Dumpster or other outside trash receptacle fire
13-0000034-000	01/28/2013	VNW	203 NORTH MAIN ST /A	711 Municipal alarm system, malicious false alarm
13-0000035-000	01/29/2013	VSE	601 SOUTH MAIN ST /B/A/L/SD	742 Extinguishing system activation
13-0000036-000	01/30/2013	VSE	235 GRAND AVE	424A CO Call-Battery Problem
13-0000037-000	02/01/2013	VSE	115 WILLARD MEMORIAL SQ /A	442 Overheated motor
13-0000038-000	02/01/2013	BNE	19618 MOSHER RD	424A CO Call-Battery Problem
13-0000039-000	02/02/2013	VNW	48182 STATE RTE 18	3221 MVA c/ Scene Safety; No Transport
13-0000040-000	02/03/2013	BNW	GORE ORPHANAGE RD & ROLFE RD	3221 MVA c/ Scene Safety; No Transport
13-0000041-000	02/03/2013	VNW	145 JONES ST	311 Medical assist, assist EMS crew

Wellington Fire District
Monthly Incident Report
Alarm Date Between {01/01/2013} And {12/31/2013}

Incident-Exp#	Alm Date	Twp/Village	Location	Incident Type
13-0000042-000	02/03/2013	VSE	300 GRAND AVE	411 Gasoline or other flammable liquid spill
13-0000043-000	02/04/2013	VNE	350 MAPLE ST /A/L/SW	311 Medical assist, assist EMS crew
13-0000044-000	02/05/2013	VNE	234 MAPLE ST /P.O. BOX 86/A/SW	115 Incinerator overload or malfunction, fire confined
13-0000045-000	02/06/2013	PISE	17278 STATE RTE 58	3222 MVA c/ Scene Safety; Light Extrication; Transport
13-0000046-000	02/07/2013	VNE	653 NORTH MAIN ST	422 Chemical spill or leak
13-0000047-000	02/08/2013	VSE	601 SOUTH MAIN ST /B/A/L/SD	745 Alarm system activation, no fire - unintentional
13-0000048-000	02/08/2013	HSW	46076 NEW LONDON EASTERN RD	445 Arcing, shorted electrical equipment
13-0000049-000	02/08/2013	OFD 14	14910 STATE RTE 58 /OBERLIN, OH 44074	445 Fuel burner/boiler malfunction, fire confined
13-0000050-000	02/09/2013	VSW	107 BENNETT ST	311 Medical assist, assist EMS crew
13-0000051-000	02/11/2013	VSE	304 EAST HERRICK AVE	743 Smoke detector activation, no fire - unintentional
13-0000052-000	02/13/2013	VSE	317 WATERFORD WAY	651 Smoke scare, odor of smoke
13-0000053-000	02/14/2013	VSE	508 DICKSON ST	412 Gas leak (natural gas or LPG)
13-0000054-000	02/14/2013	OFD 14	44228 STATE RTE 511 /OBERLIN, OH 44074	440 Building fire
13-0000055-000	02/15/2013	VNE	708 NORTH MAIN ST	412 Gas leak (natural gas or LPG)
13-0000056-000	02/16/2013	PESE	23076 FOSTER RD	114 Chimney or flue fire, confined to chimney or flue
13-0000057-000	02/17/2013	PESE	SR 301, SOUTH OF JONES RD	3221 MVA c/ Scene Safety; No Transport
13-0000058-000	02/17/2013	PESE	STATE RTE 301 & INDIAN HOLLOW RD	3221 MVA c/ Scene Safety; No Transport
13-0000059-000	02/17/2013	VNE	150 TAYLOR ST	412 Gas leak (natural gas or LPG)
13-0000060-000	02/17/2013	HSE	44059 NEW LONDON EASTERN RD /SOLARON, IN 46780	501 Alarm, no fire
13-0000061-000	02/17/2013	OFD 14	277 NORTH PROFESSOR /OBERLIN, OH 44074	440 Building fire
13-0000062-000	02/19/2013	CAM 16	15692 STATE RTE 511 /OBERLIN, OH 44074	440 Building fire
13-0000063-000	02/22/2013	BNE	49950 STATE RTE 18	3222 MVA c/ Scene Safety; Light Extrication; Transport
13-0000064-000	02/22/2013	LAG 15	17791 EAST PARKWAY /LAGRANGE, OH 44040	440 Building fire
13-0000065-000	03/04/2013	WSE	44317 STATE RTE 18	3222 MVA c/ Scene Safety; Light Extrication; Transport
13-0000066-000	03/05/2013	VSW	349 PROSPECT ST	311 Medical assist, assist EMS crew
13-0000067-000	03/05/2013	PISE	CSX CROSSING, WEBSTER RD	133 Rail vehicle fire
13-0000068-000	03/06/2013	VNE	CSX CROSSING AT BARKER ST	311 Medical assist, assist EMS crew
13-0000069-000	03/07/2013	BNE	50013 PECK WADSWORTH RD /A	740 Unintentional transmission of alarm, Other
13-0000070-000	03/07/2013	VNE	350 MAPLE ST /A/L/SW	740 Unintentional transmission of alarm, Other
13-0000071-000	03/09/2013	VSE	154 COURTLAND ST	412 Gas leak (natural gas or LPG)
13-0000072-000	03/10/2013	VSE	214 EAST HERRICK AVE /PO BOX 386/WAVERLY, OH 44080	311 Medical assist, lift assist
13-0000073-000	03/10/2013	PESW	39660 SMITH RD	322 Motor vehicle accident with injuries
13-0000074-000	03/10/2013	VNW	202 WENNER ST /A/L	412 Gas leak (natural gas or LPG)
13-0000075-000	03/10/2013	PINE	45555 STATE RTE 303	631 Authorized controlled burning
13-0000076-000	03/11/2013	WNW	46950 STATE RTE 18 /A/H/L	311A Medical assist, Lifeflight Landing Zone
13-0000077-000	03/11/2013	VNW	STATE RTE 18 & STATE RTE 58	323 Motor vehicle/pedestrian accident (MV Ped)
13-0000078-000	03/11/2013	VSW	107 BENNETT ST	311 Medical assist, assist EMS crew
13-0000079-000	03/11/2013	VNW	226 JONES ST	744 Detector activation, no fire - unintentional
13-0000080-000	03/11/2013	VNW	207 SHEILA DR	412 Gas leak (natural gas or LPG)
13-0000081-000	03/13/2013	PINE	15181 STATE RTE 58 /A/H/L/S/OBERLIN, OH 44074	311 Medical assist, assist EMS crew
13-0000082-000	03/14/2013	VSE	601 SOUTH MAIN ST /B/A/L/SD	111 Building fire

Wellington Fire District
Monthly Incident Report
Alarm Date Between {01/01/2013} And {12/31/2013}

Incident-Exp#	Alm Date	Twp/Village	Location	Incident Type
13-0000083-000	03/15/2013	VSW	349 GREENVIEW CT	424 Carbon monoxide incident
13-0000084-000	03/15/2013	PINW	46789 STATE RTE 20 /A/OBERLIN, OH 44077	311C Medical assist, assist EMS crew
13-0000085-000	03/17/2013	VNW	701 NORTH MAIN ST /LOT 10	311 Medical assist, assist EMS crew
13-0000086-000	03/18/2013	HSE	27581 STATE RTE 58	131 Passenger vehicle fire
13-0000087-000	03/18/2013	PESW	42450 SMITH RD	3221 MVA c/ Scene Safety; No Transport
13-0000088-000	03/18/2013	PINE	STATE RTE 58 & STATE RTE 303	3222 MVA c/ Scene Safety; Light Extrication; Transport
13-0000089-000	03/18/2013	VSW	349 GREENVIEW CT	600 Good intent call, Other
13-0000090-000	03/19/2013	PISE	45930 WEBSTER RD	3222 MVA c/ Scene Safety; Light Extrication; Transport
13-0000091-000	03/20/2013	PINE	15181 STATE RTE 58 /A/H/L/S/OBERLIN, OH 44077	311 Medical assist, assist EMS crew
13-0000092-000	03/20/2013	PINE	15181 STATE RTE 58 /A/H/L/S/OBERLIN, OH 44077	311 Medical assist, assist EMS crew
13-0000093-000	03/22/2013	PENE	38599 STATE RTE 18	3221 MVA c/ Scene Safety; No Transport
13-0000094-000	03/23/2013	GTWP	36964 GRAFTON RD /GRAFTON, OH 44044	400 Water & ice-related rescue, other
13-0000095-000	03/24/2013	VSW	136 SOUTH MAIN ST /A/H/L/SC	412 Gas leak (natural gas or LPG)
13-0000096-000	03/24/2013	VNE	816 NORTH MAIN ST /H/L/SW	411 Gasoline or other flammable liquid spill
13-0000097-000	03/26/2013	VNE	101 WEBER CT /A/L/S	743 Smoke detector activation, no fire - unintentional
13-0000098-000	03/28/2013	HSE	44059 NEW LONDON EASTERN RD /SULINA, OH 44480	311 Medical assist, assist EMS crew
13-0000099-000	03/29/2013	VSW	336 NORTH WALDEN LA	311 Medical assist, assist EMS crew
13-0000100-000	04/02/2013	VNW	805 PATRIOT DR /E/L	311 Medical assist, assist EMS crew
13-0000101-000	04/04/2013	PENW	42825 PECK WADSWORTH RD	424 Carbon monoxide incident
13-0000102-000	04/06/2013	PESW	43281 STATE RTE 18	631 Authorized controlled burning
13-0000103-000	04/06/2013	BNE	20779 STATE RTE 511	631 Authorized controlled burning
13-0000104-000	04/07/2013	WNW	48184 WALNUT VALLEY RD	143 Grass fire
13-0000105-000	04/07/2013	HNE	25381 STATE RTE 58	631 Authorized controlled burning
13-0000106-000	04/09/2013	VNW	203 NORTH MAIN ST /A	744 Detector activation, no fire - unintentional
13-0000107-000	04/09/2013	PINW	46314 STATE RTE 20 /OBERLIN, OH 44077	631 Authorized controlled burning
13-0000108-000	04/10/2013	VSE	115 WILLARD MEMORIAL SQ /A	600 Good intent call, Other
13-0000109-000	04/11/2013	VNW	701 NORTH MAIN ST /LOT 2	311C Medical assist, lift assist
13-0000110-000	04/11/2013	BNE	19375 QUARRY RD	3222 MVA c/ Scene Safety; Light Extrication; Transport
13-0000111-000	04/11/2013	VSW	533 PARKSIDE RESERVE ST	113 Cooking fire, confined to container
13-0000112-000	04/13/2013	VSW	183 DEPOT ST	445 Arcing, shorted electrical equipment
13-0000113-000	04/13/2013	PESW	42544 JONES RD	114 Chimney or flue fire, confined to chimney or flue
13-0000114-000	04/16/2013	VSW	336 NORTH WALDEN LA	311 Medical assist, assist EMS crew
13-0000115-000	04/18/2013	WSE	22898 WEST RD /A/L	611 Dispatched & cancelled en route
13-0000116-000	04/19/2013	PENE	40134 STATE RTE 18	311 Medical assist, assist EMS crew
13-0000117-000	04/19/2013	VNE	350 MAPLE ST /A/L/SW	311 Medical assist, assist EMS crew
13-0000118-000	04/22/2013	PINW	STATE RTE 303 & PITTS RD	3222 MVA c/ Scene Safety; Light Extrication; Transport
13-0000119-000	04/22/2013	VNE	410 BARKER ST	651 Smoke scare, odor of smoke
13-0000120-000	04/24/2013	VSW	WEST HERRICK AVE & UNION ST	3222 MVA c/ Scene Safety; Light Extrication; Transport
13-0000121-000	04/26/2013	WSE	45181 STATE RTE 18	122 Fire in motor home, camper, recreational vehicle
13-0000122-000	04/26/2013	PINW	47505 STATE RTE 20 /OBERLIN, OH 44077	631 Authorized controlled burning
13-0000123-000	04/28/2013	VSW	504 SOUTH MAIN ST /PO BOX 26/A/H/L/30	System malfunction, Other

Wellington Fire District
Monthly Incident Report
Alarm Date Between {01/01/2013} And {12/31/2013}

Incident-Exp#	Alm Date	Twp/Village	Location	Incident Type
13-0000124-000	04/29/2013	PINE	45445 KIPTON NICKLE PLATE RD /OBERLIN, OH 44074	3221 MVA c/ Scene Safety; Light Extrication; Transport
13-0000125-000	04/29/2013	BSE	22357 STATE RTE 511	740 Unintentional transmission of alarm, Other
13-0000126-000	04/30/2013	BSW	22910 STATE RTE 511 /A/SW	311 Medical assist, assist EMS crew
13-0000127-000	04/30/2013	WSE	44155 JONES RD	424 Carbon monoxide incident
13-0000128-000	05/02/2013	VNE	410 NORTH MAIN ST	561 Unauthorized burning
13-0000129-000	05/02/2013	HNE	25900 STATE RTE 58	3221 MVA c/ Scene Safety; No Transport
13-0000130-000	05/03/2013	VSW	578 PARKSIDE RESERVE ST	423 Refrigeration leak
13-0000131-000	05/05/2013	WNW	21251 PITTS RD	561 Unauthorized burning
13-0000132-000	05/05/2013	ROC 13	27745 GORE ORPHANAGE RD	111 Building fire
13-0000133-000	05/06/2013	VNW	202 KELLY ST /A	321 EMS call, excluding vehicle accident with injury
13-0000134-000	05/07/2013	PINW	48199 STATE RTE 20 /A/L/SW/OBERLIN, OH 44074	311 Medical assist, assist EMS crew
13-0000135-000	05/09/2013	PENTWP 8	42193 WEBSTER RD	631 Authorized controlled burning
13-0000136-000	05/09/2013	WNW	46386 PECK WADSWORTH RD	3221 MVA c/ Scene Safety; No Transport
13-0000137-000	05/10/2013	WSE	45181 STATE RTE 18	122 Fire in motor home, camper, recreational vehicle
13-0000138-000	05/10/2013	VNE	179 EAST HERRICK AVE	311 Medical assist, assist EMS crew
13-0000139-000	05/11/2013	VSW	120 SOUTH MAIN ST	3221 MVA c/ Scene Safety; No Transport
13-0000140-000	05/13/2013	BSE	50991 STATE RTE 18	622 No Incident found on arrival at dispatch address
13-0000141-000	05/14/2013	CAM 16	50518 AUSTIN RD	611 Dispatched & cancelled en route
13-0000142-000	05/16/2013	PISE	45310 WEBSTER RD	311 Medical assist, assist EMS crew
13-0000143-000	05/18/2013	WNW	21367 QUARRY RD	631 Authorized controlled burning
13-0000144-000	05/19/2013	VNW	118.5 DEPOT ST	311 Medical assist, assist EMS crew
13-0000145-000	05/26/2013	VSW	354 NORTH WALDEN LA /B	311 Medical assist, assist EMS crew
13-0000146-000	05/27/2013	VNE	120 MAPLE ST /A/L/SC	311 Medical assist, assist EMS crew
13-0000147-000	06/02/2013	PESE	22161 STATE RTE 301	561 Unauthorized burning
13-0000148-000	06/03/2013	VSW	241 PROSPECT ST	671 HazMat release investigation w/no HazMat
13-0000149-000	06/04/2013	WNW	20072 PITTS RD	111 Building fire
13-0000150-000	06/07/2013	VSE	601 SOUTH MAIN ST /B/A/L/SD	743 Smoke detector activation, no fire - unintentional
13-0000151-000	06/07/2013	OFD 14	600 KENDALL DR /OBERLIN, OH 44074	611 Dispatched & cancelled en route
13-0000152-000	06/08/2013	HUNTWP 9	44901 NEW LONDON EASTERN RD /SUTCLIFF, OH 44890	302 Gas leak, odor of gas or LPG)
13-0000153-000	06/09/2013	WSE	SOUTH MAIN ST & GROVE ST	651 Smoke scare, odor of smoke
13-0000154-000	06/10/2013	BNE	19800 QUARRY RD	311 Medical assist, assist EMS crew
13-0000155-000	06/11/2013	PENW	STATE RTE 18 & WHITEHEAD RD	3221 MVA c/ Scene Safety; No Transport
13-0000156-000	06/13/2013	HNE	26500 HAWLEY RD	743 Smoke detector activation, no fire - unintentional
13-0000157-000	06/14/2013	BSW	52325 STATE RTE 18	311A Medical assist, Lifeflight Landing Zone
13-0000158-000	06/20/2013	PINE	15415 HALLAUER RD /OBERLIN, OH 44074	631 Authorized controlled burning
13-0000159-000	06/20/2013	PISE	44591 STATE RTE 303	561 Unauthorized burning
13-0000160-000	06/20/2013	WSE	JONES RD & HAWLEY RD	622 No Incident found on arrival at dispatch address
13-0000161-000	06/21/2013	VNE	704 NORTH MAIN ST	411 Gasoline or other flammable liquid spill
13-0000162-000	06/22/2013	OFD 14	147 NORTH PLEASANT ST /OBERLIN, OH 44074	611 Dispatched & cancelled en route
13-0000163-000	06/24/2013	VNW	202 KELLY ST /A	512 Ring or jewelry removal
13-0000164-000	06/26/2013	ROC 13	25599 GORE ORPHANAGE RD	131 Passenger vehicle fire

Incident-Exp#	Alm Date	Twp/Village	Location	Incident Type
13-0000165-000	06/26/2013	PENE	21040 FOSTER RD	424A CO Call-Battery Problem
13-0000166-000	06/29/2013	WSW	JONES RD & PARKSIDE RESERVE ST	411 Gasoline or other flammable liquid spill
13-0000167-000	07/01/2013	WNE	45702 PECK WADSWORTH RD	400 Hazardous condition, Other
13-0000168-000	07/02/2013	VNW	203 JONES ST	412 Gas leak (natural gas or LPG)
13-0000169-000	07/03/2013	VSW	46400 JONES RD	510 Person in distress, Other
13-0000170-000	07/04/2013	WNW	19948 STATE RTE 58	311 Medical assist, assist EMS crew
13-0000171-000	07/04/2013	VNE	629 NORTH MAIN ST	311A Medical assist, Lifeflight Landing Zone
13-0000172-000	07/07/2013	VNW	300 JONES ST	734 Heat detector activation due to malfunction
13-0000173-000	07/07/2013	HSE	STATE RTE 58 & STEWART RD	3222 MVA c/ Scene Safety; Light Extrication; Transport
13-0000174-000	07/09/2013	VNW	DEPOT ST & WEST HERRICK AVE	444 Power line down
13-0000175-000	07/09/2013	VSW	140 SOUTH MAIN ST /A/L	734 Heat detector activation due to malfunction
13-0000176-000	07/10/2013	ROC 13	29475 GORE ORPHANAGE RD /ROCHESTER	4090
13-0000177-000	07/10/2013	VNE	MAPLE ST & NORTH MAIN ST	3222 MVA c/ Scene Safety; Light Extrication; Transport
13-0000178-000	07/10/2013	WSE	JONES RD, 640 YDS EAST OF SR58	3221 MVA c/ Scene Safety; No Transport
13-0000179-000	07/10/2013	VSW	ERIE ST AREA	622 No Incident found on arrival at dispatch address
13-0000180-000	07/10/2013	PINE	15380 STATE RTE 58 /OBERLIN, OH 44071	HazMat release investigation w/no HazMat
13-0000181-000	07/10/2013	LAG 15	17918 WHITEHEAD RD /LAGRANGE, OH 44043	300 & ice-related rescue, other
13-0000182-000	07/11/2013	PINW	16205 QUARRY RD /OBERLIN, OH 44024	3221 MVA c/ Scene Safety; No Transport
13-0000183-000	07/11/2013	VSW	132 SOUTH ST	520 Water problem, Other
13-0000184-000	07/13/2013	VSE	413 MAGYAR ST /P.O. BOX 86/A/SW	740 Unintentional transmission of alarm, Other
13-0000185-000	07/13/2013	PENW	19726 WHITEHEAD RD	138 Off-road vehicle or heavy equipment fire
13-0000186-000	07/16/2013	VSW	350 SOUTH MAIN ST	735 Alarm system sounded due to malfunction
13-0000187-000	07/19/2013	VSE	413 MAGYAR ST /P.O. BOX 86/A/SW	745 Alarm system activation, no fire - unintentional
13-0000188-000	07/20/2013	VNW	STATE RTE 18 & STATE RTE 58	3221 MVA c/ Scene Safety; No Transport
13-0000189-000	07/20/2013	PESW	WEST RD, NORTH OF SOUTH JONES ST	3221 MVA c/ Scene Safety; No Transport
13-0000190-000	07/20/2013	WSE	44497 JONES RD	412 Gas leak (natural gas or LPG)
13-0000191-000	07/21/2013	HSW	W&LE TRACKS, SR 58 SOUTH OF SR58	562 Unauthorized burning
13-0000192-000	07/23/2013	VNW	130 JOHNS ST	743 Smoke detector activation, no fire - unintentional
13-0000193-000	07/24/2013	WNW	48424 STATE RTE 18	311 Medical assist, assist EMS crew
13-0000194-000	07/25/2013	HSW	BAKER RD & STEWART RD	3221 MVA c/ Scene Safety; No Transport
13-0000195-000	07/25/2013	WSE	505 SOUTH MAIN ST	631 Authorized controlled burning
13-0000196-000	07/25/2013	VNW	305 UNION ST /A/H/L	744 Detector activation, no fire - unintentional
13-0000197-000	07/26/2013	PINE	16113 HAWLEY RD	631 Authorized controlled burning
13-0000198-000	07/26/2013	OFD 14	152 SHIPHERD CIR /OBERLIN, OH 44074	Cover assignment, standby, moveup
13-0000199-000	07/28/2013	VSW	631 WEST HERRICK AVE	3222 MVA c/ Scene Safety; Light Extrication; Transport
13-0000200-000	07/31/2013	PINW	48199 STATE RTE 303	3221 MVA c/ Scene Safety; No Transport
13-0000201-000	08/04/2013	PISE	17325 STATE RTE 58	733 Smoke detector activation due to malfunction
13-0000202-000	08/04/2013	PESW	43191 JONES RD	322B Vehicle accident/Life Flight
13-0000203-000	08/05/2013	PESE	24155 STATE RTE 301	631 Authorized controlled burning
13-0000204-000	08/07/2013	PINE	STATE RTE 303 & HALLAUER RD	3222 MVA c/ Scene Safety; Light Extrication; Transport
13-0000205-000	08/07/2013	VSW	140 SOUTH MAIN ST /A/L	735 Alarm system sounded due to malfunction

Wellington Fire District
Monthly Incident Report
Alarm Date Between {01/01/2013} And {12/31/2013}

Incident-Exp#	Alm Date	Twp/Village	Location	Incident Type
13-0000206-000	08/07/2013	PINW	47445 STATE RTE 303	600 Good intent call, Other.
13-0000207-000	08/09/2013	VSE	413 MAGYAR ST /P.O. BOX 86/A/SW	730 System malfunction, Other
13-0000209-000	08/12/2013	VNW	701 NORTH MAIN ST /LOT2	311 Medical assist, assist EMS crew
13-0000208-000	08/12/2013	VNW	629 NORTH MAIN ST /A/H/L	311A Medical assist, Lifeflight Landing Zone
13-0000210-000	08/12/2013	PESW	42470 PECK WADSWORTH RD	561 Unauthorized burning
13-0000211-000	08/13/2013	VSE	127 PARK PL /A/H	733 Smoke detector activation due to malfunction
13-0000212-000	08/13/2013	VNW	629 NORTH MAIN ST /A/H/L	311A Medical assist, Lifeflight Landing Zone
13-0000213-000	08/15/2013	CARL 18	13326 WHITEHEAD /LAGRANGE, OH 44050	Building fire
13-0000214-000	08/16/2013	VSW	149 WEST HERRICK AVE	531 Smoke or odor removal
13-0000215-000	08/16/2013	WNE	167 EAST HERRICK AVE	443 Breakdown of light ballast
13-0000216-000	08/16/2013	WNE	167 EAST HERRICK AVE	443 Breakdown of light ballast
13-0000217-000	08/16/2013	BSW	22267 GORE ORPHANAGE RD	311 Medical assist, assist EMS crew
13-0000218-000	08/17/2013	PESE	40961 STATE RTE 18	631 Authorized controlled burning
13-0000219-000	08/17/2013	VSW	SOUTH OF 645 PARKSIDE	3221 MVA c/ Scene Safety; No Transport
13-0000220-000	08/18/2013	PENE	21300 INDIAN HOLLOW RD	322A Vehicle accident
13-0000221-000	08/21/2013	WSW	23000 FAIRGROUNDS RD	424 Carbon monoxide incident
13-0000222-000	08/21/2013	BSE	50695 STATE RTE 18	550 Public service assistance, Other
13-0000223-000	08/22/2013	PESE	40600 STATE RTE 18	3221 MVA c/ Scene Safety; No Transport
13-0000224-000	08/23/2013	VNW	145 NORTH MILL ST	154 Dumpster or other outside trash receptacle fire
13-0000225-000	08/23/2013	WSW	PITTS RD, 600' SOUTH OF SR 18	323 Motor vehicle/pedestrian accident (MV Ped)
13-0000226-000	08/25/2013	PISE	17121 STATE RTE 58	3222 MVA c/ Scene Safety; Light Extrication; Transport
13-0000227-000	08/26/2013	VNW	125 JOHNS ST /L	733 Smoke detector activation due to malfunction
13-0000228-000	08/29/2013	VNW	NORTH MAIN, BETWEEN JONES AND 17143	Chemical hazard (no spill or leak)
13-0000229-000	08/31/2013	VNE	745 SHILOH AVE /A/L	733 Smoke detector activation due to malfunction
13-0000230-000	08/31/2013	BSW	23884 STATE RTE 511	510 Person in distress, Other
13-0000231-000	08/31/2013	VNW	135 NORTH MILL ST	733 Smoke detector activation due to malfunction
13-0000232-000	09/01/2013	PINW	STATE RTE 20 & QUARRY RD /OBERLIN, OH 44072	Scene Safety; No Transport
13-0000233-000	09/01/2013	VNW	121 MIDDLE ST	311 Medical assist, assist EMS crew
13-0000234-000	09/01/2013	VSE	121 DICKSON ST	311 Medical assist, assist EMS crew
13-0000235-000	09/02/2013	PINE	14518 STATE RTE 58 /OBERLIN, OH 44072	MVA c/ Scene Safety; Light Extrication; Transport
13-0000236-000	09/02/2013	HSE	45907 STEWART RD	322B Vehicle accident/Life Flight
13-0000238-000	09/03/2013	PINW	STATE RTE 20 & QUARRY RD /OBERLIN, OH 44072	Scene Safety; Light Extrication; Transport
13-0000237-000	09/04/2013	VNE	139 WEBER CT /A/H/L/SC	311 Medical assist, assist EMS crew
13-0000239-000	09/04/2013	PINW	48199 STATE RTE 20 /A/L/SW/OBERLIN, OH 44072	Smoke detector activation, no fire - unintentional
13-0000240-000	09/06/2013	OFD 14	87 EAST LORAIN ST /OBERLIN, OH 44074	Building fire
13-0000241-000	09/07/2013	PISW	18500 PITTS RD	311 Medical assist, assist EMS crew
13-0000242-000	09/08/2013	WNE	WEBSTER RD, 550' WEST OF HAWLEY RD	MVA c/ Scene Safety; Light Extrication; Transport
13-0000243-000	09/09/2013	PENE	20355 VERMONT ST	352 Extrication of victim(s) from vehicle
13-0000244-000	09/09/2013	WNW	46908 PECK WADSWORTH RD	671 HazMat release investigation w/no HazMat
13-0000245-000	09/11/2013	VSE	214 EAST HERRICK AVE /PO BOX 38700/SW	System malfunction, Other
13-0000246-000	09/11/2013	VSE	127 PARK PL /A/H	733 Smoke detector activation due to malfunction

Wellington Fire District
Monthly Incident Report
Alarm Date Between {01/01/2013} And {12/31/2013}

Incident-Exp#	Alm Date	Twp/Village	Location	Incident Type
13-0000247-000	09/13/2013	PENE	38934 STATE RTE 18	3222 MVA c/ Scene Safety; Light Extrication; Transport
13-0000248-000	09/13/2013	PENW	43244 STATE RTE 18	311 Medical assist, assist EMS crew
13-0000249-000	09/15/2013	VNW	629 NORTH MAIN ST /A/H/L	311A Medical assist, Lifeflight Landing Zone
13-0000250-000	09/15/2013	PESE	40228 SMITH RD	320 Emergency medical service, other
13-0000251-000	09/15/2013	WNE	44828 STATE RTE 18	631 Authorized controlled burning
13-0000252-000	09/17/2013	WNE	45817 PECK WADSWORTH RD	311 Medical assist, assist EMS crew
13-0000253-000	09/18/2013	PISE	45310 WEBSTER RD	311 Medical assist, assist EMS crew
13-0000254-000	09/18/2013	VSE	297 CEMETERY RD	311 Medical assist, assist EMS crew
13-0000255-000	09/19/2013	VNW	122 DEPOT ST	411 Gasoline or other flammable liquid spill
13-0000256-000	09/19/2013	PENW	41760 STATE RTE 18	3221 MVA c/ Scene Safety; No Transport
13-0000257-000	09/19/2013	LAG 15	17934 EAST PARKWAY /LAGRANGE, OH 44001	Building fire
13-0000258-000	09/21/2013	HNW	25780 MCMILLAN RD	311A Medical assist, Lifeflight Landing Zone
13-0000259-000	09/23/2013	WSW	23000 FAIRGROUNDS RD	444 Power line down
13-0000260-000	09/23/2013	WNE	21607 HAWLEY RD	561 Unauthorized burning
13-0000261-000	09/23/2013	PINW	47285 STATE RTE 303	311 Medical assist, assist EMS crew
13-0000262-000	09/24/2013	VSW	210 RESERVE COURT	733 Smoke detector activation due to malfunction
13-0000263-000	09/24/2013	WSW	JONES RD, 300 YDS WEST OF METROPARKWAY	3221 MVA c/ Scene Safety; No Transport
13-0000264-000	09/25/2013	BNE	STATE RTE 18 & STATE RTE 511	3222 MVA c/ Scene Safety; Light Extrication; Transport
13-0000265-000	09/26/2013	VSW	136 SOUTH MAIN ST /A/H/L/SC	311 Medical assist, assist EMS crew
13-0000266-000	09/26/2013	PINW	48199 STATE RTE 20 /A/L/SW/OBERLIN, OH 44074	Smoke detector activation due to malfunction
13-0000267-000	09/29/2013	HSE	SR 58, 100 YDS NORTH OF NLE	322B Vehicle accident/Life Flight
13-0000268-000	09/30/2013	VNW	805 PATRIOT DR	311 Medical assist, assist EMS crew
13-0000269-000	09/30/2013	VSW	142 RESERVE CIRCLE	746 Carbon monoxide detector activation, no CO
13-0000270-000	10/01/2013	VSW	136 SOUTH MAIN ST /A/H/L/SC	744 Detector activation, no fire - unintentional
13-0000271-000	10/02/2013	VSE	317 COURTLAND ST	111 Building fire
13-0000272-000	10/03/2013	VNE	816 NORTH MAIN ST /H/L/SW	311 Medical assist, assist EMS crew
13-0000273-000	10/05/2013	PINE	WEST RD & STATE RTE 303	3222 MVA c/ Scene Safety; Light Extrication; Transport
13-0000274-000	10/05/2013	VSE	631 SOUTH MAIN ST	3222 MVA c/ Scene Safety; Light Extrication; Transport
13-0000275-000	10/05/2013	VNE	816 NORTH MAIN ST /H/L/SW	743 Smoke detector activation, no fire - unintentional
13-0000276-000	10/08/2013	WSE	JONES RD & HAWLEY RD	600 Good intent call, Other
13-0000277-000	10/10/2013	VNE	350 MAPLE ST /A/L/SW	731 Sprinkler activation due to malfunction
13-0000278-000	10/10/2013	VSW	151.5 DEPOT ST	311A Medical assist, Lifeflight Landing Zone
13-0000279-000	10/12/2013	HNE	25381 STATE RTE 58	311A Medical assist, Lifeflight Landing Zone
13-0000280-000	10/15/2013	WAKE	ZENOBIA RD /WAKEMAN, OH 44889	3221 MVA c/ Scene Safety; No Transport
13-0000281-000	10/16/2013	VSW	333 GREENVIEW CT	424A CO Call-Battery Problem
13-0000282-000	10/18/2013	PINE	15090 WEST RD /OBERLIN, OH 44074	311 Medical assist, assist EMS crew
13-0000283-000	10/18/2013	OFD 14	45200 EAST HAMILTON ST /OBERLIN, OH 44001	Building fire
13-0000284-000	10/19/2013	PINW	18191 QUARRY RD	3222 MVA c/ Scene Safety; Light Extrication; Transport
13-0000285-000	10/20/2013	PITTTWP 6	46332 HUGHES RD /OBERLIN, OH 44074	311 Medical assist, assist EMS crew
13-0000286-000	10/20/2013	VNW	102 WEST HERRICK AVE /APT. 5/A	510 Person in distress, Other
13-0000287-000	10/22/2013	VSE	143 GRAND AVE	424A CO Call-Battery Problem

Wellington Fire District
Monthly Incident Report
Alarm Date Between {01/01/2013} And {12/31/2013}

Incident-Exp#	Alm Date	Twp/Village	Location	Incident Type
13-0000288-000	10/22/2013	PISW	46890 WHITNEY RD	311 Medical assist, assist EMS crew
13-0000289-000	10/22/2013	WSE	43760 SMITH RD	424A CO Call-Battery Problem
13-0000290-000	10/23/2013	VNE	800 NORTH MAIN ST /H	311 Medical assist, assist EMS crew
13-0000291-000	10/24/2013	VNE	414 NORTH MAIN ST	311 Medical assist, assist EMS crew
13-0000292-000	10/25/2013	VNE	621 NORTH MAIN ST	3222 MVA c/ Scene Safety; Light Extrication; Transport
13-0000293-000	10/27/2013	VNE	139 WEBER CT /A/H/L/SC	733 Smoke detector activation due to malfunction
13-0000294-000	10/29/2013	BNE	19567 STATE RTE 511	311A Medical assist, Lifeflight Landing Zone
13-0000295-000	10/29/2013	VSE	115 WILLARD MEMORIAL SQ /A	730 System malfunction, Other
13-0000296-000	10/30/2013	VNW	194.5 WEST HERRICK AVE /A/H/SC	740 Unintentional transmission of alarm, Other
13-0000297-000	10/30/2013	VNE	187 EAST HERRICK AVE	740 Unintentional transmission of alarm, Other
13-0000298-000	10/30/2013	VNW	629 NORTH MAIN ST /A/H/L	721 Bomb scare - no bomb
13-0000299-000	10/31/2013	PISW	17071 PITTS RD	3221 MVA c/ Scene Safety; No Transport
13-0000300-000	11/03/2013	PENE	STATE RTE 18 & FOSTER RD	3222 MVA c/ Scene Safety; Light Extrication; Transport
13-0000301-000	11/03/2013	VSE	127 PARK PL /A/H	3221 MVA c/ Scene Safety; No Transport
13-0000302-000	11/03/2013	VNW	701 NORTH MAIN ST /LOT 10	311 Medical assist, assist EMS crew
13-0000303-000	11/05/2013	VSW	344 SOUTH WALDEN LA /4	311 Medical assist, assist EMS crew
13-0000304-000	11/06/2013	VNE	119 CLAY ST	412 Gas leak (natural gas or LPG)
13-0000305-000	11/08/2013	VNE	702 BROOKSIDE CT	311 Medical assist, assist EMS crew
13-0000306-000	11/09/2013	PINE	44878 HUGHES RD	311 Medical assist, assist EMS crew
13-0000307-000	11/12/2013	LAG 15	17189 WHITEHEAD RD /LAGRANGE, OH 44044	On Dispatched & cancelled en route
13-0000308-000	11/12/2013	PESW	24106 STATE RTE 301	3221 MVA c/ Scene Safety; No Transport
13-0000309-000	11/14/2013	VNE	143 EAST HERRICK AVE	154 Dumpster or other outside trash receptacle fire
13-0000310-000	11/15/2013	HNW	26840 STATE RTE 58	3222 MVA c/ Scene Safety; Light Extrication; Transport
13-0000311-000	11/16/2013	PISW	18456 PITTS RD	311 Medical assist, assist EMS crew
13-0000312-000	11/16/2013	PESE	22862 INDIAN HOLLOW RD	631 Authorized controlled burning
13-0000313-000	11/18/2013	VNW	230 WENNER ST	551 Assist police or other governmental agency
13-0000314-000	11/18/2013	VNW	210 UNION ST	424 Carbon monoxide incident
13-0000315-000	11/20/2013	VNE	820 NORTH MAIN ST /SW	561 Unauthorized burning
13-0000316-000	11/21/2013	WSW	22975 QUARRY RD	561 Unauthorized burning
13-0000317-000	11/22/2013	VSE	508 DICKSON ST	412 Gas leak (natural gas or LPG)
13-0000318-000	11/23/2013	PINE	43860 KIPTON NICKLE PLATE RD /OBERLIN, OH 44074	On Dispatched & cancelled en route
13-0000319-000	11/24/2013	PINW	16453 PITTS RD /OBERLIN, OH 44074	424 Carbon monoxide incident
13-0000320-000	11/25/2013	PISE	WHITNEY RD & HAWLEY RD	3221 MVA c/ Scene Safety; No Transport
13-0000321-000	11/25/2013	VSW	115 PROSPECT ST /A/L/SC	311 Medical assist, assist EMS crew
13-0000322-000	11/25/2013	VSE	108 MCKINLEY ST	622 No Incident found on arrival at dispatch address
13-0000323-000	11/26/2013	PISW	17625 PITTS RD	311 Medical assist, assist EMS crew
13-0000324-000	11/30/2013	VNW	224 NORTH MILL ST /A32	424 Carbon monoxide incident
13-0000325-000	11/30/2013	WSW	23000 FAIRGROUNDS RD	311A Medical assist, Lifeflight Landing Zone
13-0000326-000	12/01/2013	HSE	44059 NEW LONDON EASTERN RD /SULLY, OH 44880	On Dispatched & cancelled en route
13-0000327-000	12/02/2013	VNE	720 SHILOH AVE /A/L/SW	311 Medical assist, assist EMS crew
13-0000328-000	12/03/2013	HSE	44059 NEW LONDON EASTERN RD /SULLY, OH 44880	On Dispatched & cancelled en route

Wellington Fire District
Monthly Incident Report
Alarm Date Between {01/01/2013} And {12/31/2013}

Incident-Exp#	Alm Date	Twp/Village	Location	Incident Type
13-0000329-000	12/03/2013	BNE	18994 QUARRY RD	561 Unauthorized burning
13-0000330-000	12/04/2013	HNW	47584 BURSLEY RD	342 Search for person in water
13-0000331-000	12/04/2013	HNE	44800 BURSLEY RD	561 Unauthorized burning
13-0000332-000	12/06/2013	PISE	STATE RTE 58 & WHITNEY RD	3222 MVA c/ Scene Safety; Light Extrication; Transport
13-0000333-000	12/06/2013	VSW	PROSPECT ST & FOURTH ST	412 Gas leak (natural gas or LPG)
13-0000334-000	12/08/2013	VNW	JONES ST & NORTH MAIN ST	3221 MVA c/ Scene Safety; No Transport
13-0000335-000	12/09/2013	PISW	47979 WHITNEY RD /A	611 Dispatched & cancelled en route
13-0000336-000	12/10/2013	VNW	131 ELM ST	651 Smoke scare, odor of smoke
13-0000337-000	12/10/2013	VSW	136 SOUTH MAIN ST /A/H/L/SC	744 Detector activation, no fire - unintentional
13-0000338-000	12/10/2013	VNW	228 WENNER ST	651 Smoke scare, odor of smoke
13-0000339-000	12/11/2013	ROC 13	52910 STOCKING RD	114 Chimney or flue fire, confined to chimney or flue
13-0000340-000	12/11/2013	VNW	701 NORTH MAIN ST /LOT66	311 Medical assist, assist EMS crew
13-0000341-000	12/13/2013	PISE	43838 WEBSTER RD	111 Building fire
13-0000342-000	12/14/2013	VNW	132 JONES ST	531 Smoke or odor removal
13-0000343-000	12/14/2013	OFD 14	385 SOUTH PROFESSOR ST /OBERLIN, OH 44074	111 Dispatched & cancelled en route
13-0000344-000	12/15/2013	PESW	43160 SMITH RD	622 No Incident found on arrival at dispatch address
13-0000345-000	12/16/2013	HSE	44497 STATE RTE 162	3222 MVA c/ Scene Safety; Light Extrication; Transport
13-0000346-000	12/17/2013	VNE	800 NORTH MAIN ST /H	600 Good intent call, Other
13-0000347-000	12/17/2013	BSW	52249 STATE RTE 18	631 Authorized controlled burning
13-0000348-000	12/17/2013	BSW	52249 STATE RTE 18	631 Authorized controlled burning
13-0000349-000	12/18/2013	WSE	22525 WEST RD	3221 MVA c/ Scene Safety; No Transport
13-0000350-000	12/18/2013	WNW	48101 PECK WADSWORTH RD	3221 MVA c/ Scene Safety; No Transport
13-0000351-000	12/18/2013	WNW	19720 STATE RTE 58 /LOT #25	311 Medical assist, assist EMS crew
13-0000352-000	12/18/2013	VSW	224 JONES RD	311 Medical assist, assist EMS crew
13-0000353-000	12/21/2013	PENE	FOSTER RD & INDIAN HOLLOW RD	360 Water & ice-related rescue, other
13-0000354-000	12/21/2013	PESE	42544 JONES RD	114 Chimney or flue fire, confined to chimney or flue
13-0000355-000	12/21/2013	PESE	JONES RD, 150 YDS EAST OF SR 30	360 Water & ice-related rescue, other
13-0000356-000	12/22/2013	PESE	22225 STATE RTE 301	743 Smoke detector activation, no fire - unintentional
13-0000357-000	12/23/2013	VNE	BARKER ST & WEBER CT	413 Oil or other combustible liquid spill
13-0000358-000	12/23/2013	PISW	47285 MERRIAM RD	311 Medical assist, assist EMS crew
13-0000359-000	12/25/2013	VSW	318 GREENVIEW CT	733 Smoke detector activation due to malfunction
13-0000360-000	12/25/2013	HNE	24578 STATE RTE 58	3222 MVA c/ Scene Safety; Light Extrication; Transport
13-0000361-000	12/27/2013	WNE	STATE RTE 18 & WEST RD	322B Vehicle accident/Life Flight
13-0000362-000	12/27/2013	OFD 14	86 BERGER CT /OBERLIN, OH 44074	611 Dispatched & cancelled en route
13-0000363-000	12/28/2013	PISW	46890 WHITNEY RD	311 Medical assist, assist EMS crew
13-0000364-000	12/28/2013	WAKE	STATE RTE 18 & BUTLER RD	311 Medical assist, assist EMS crew

Total Incident Count 364

SECTION V: TRAINING AND ACTIVITIES

Technical Rescue Training

By Lieutenant Greg Frenk

The Wellington Fire District has a broad array of technical response teams. The days of the firefighter just putting out fires is obsolete. The fire department is called to every emergency you can imagine. As a result of these emergencies the fire service has had to adapt and evolve to handle these additional situations. These technical response teams consist of firefighters that expend many extra hours of training above and beyond that of firefighting that is seldom seen yet very important to the district. Continuing education for developing and maintaining technical certifications is ever increasing for these county teams and our own department capabilities.



The Wellington Fire District is required to contribute two of its members to train and be part of the Lorain County Hazardous Materials Team. Last year, Firefighters Ethan Little and Tim Polen fulfilled that obligation. As members of the team, both are trained to the technician level and have spent many hours training for this important team. They participate in countywide drills and have participated in several stand-by responses during visits by the President of the United States to Lorain County. The Haz-Mat team has expanded its training over the years to include not only spills of hazardous materials, but also radioactive materials and weapons of mass destruction.

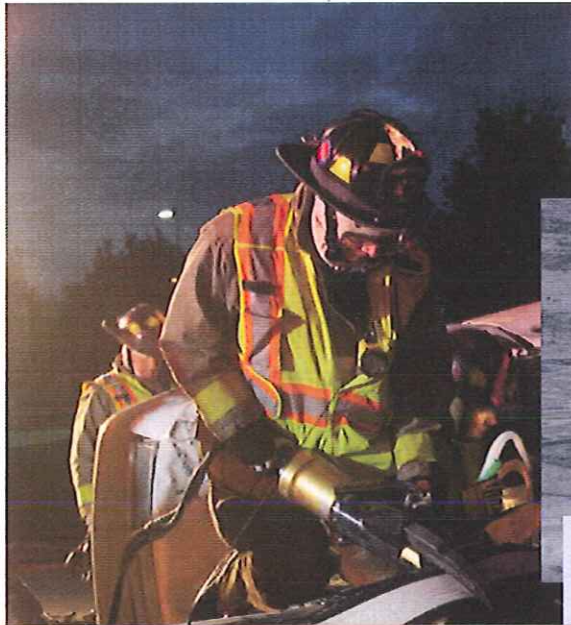
The Lorain County Dive Team is currently headed, as President, by our own Gordy Lent. The fire district is fortunate to have five divers on the department in various stages of training – from ERD Supervisor to Open Water certified. Lent is our most senior and highly trained diver and spear heads our department's team. Lt. Troy Pitts and Lt. Greg Frenk have been active team members for many years. In 2012, three more personnel were added to the team, firefighters Ethan Little, Dusty Reynolds and Mike Barlow received their initial training. Firefighters John Clawson and Dave Roser attend dive training sessions and provide much needed support positions such as dive tenders or sonar operators. The districts gear is housed in a twenty-four foot trailer, complete with a generator, in addition to two boats, two motors, swift water gear, ice rescue suits, ropes and rigging equipment as well as all of its six diver's gear and air cylinders. This trailer also houses the Lorain County Dive Teams sonar unit and metal detector.

The Lorain County Swiftwater Response Team has been a newer team to develop in response to the demands of victims entrapped by flooding and moving water. Due to the extremely dangerous conditions of moving water, this team drills with specialized techniques with ropes, boats and individual go rescues that are specific to moving water and its hidden dangers. In order to participate on this team, members are required to pass an annual swim test to prove proficiency in the water. Lt. Greg Frenk and firefighter Gordy Lent are both trained to the swift water technician level. Assistant Chief Bill Brown, Lt. Troy Pitts, firefighters Dan Shinsky, Brian Hamer and Steve Higgins are trained to swift water operations level.

The district has also added high angle rope rescue to its list of rescue disciplines. Rescues involving buildings, cliffs, ravines, trees or water and cell phone towers are examples of places

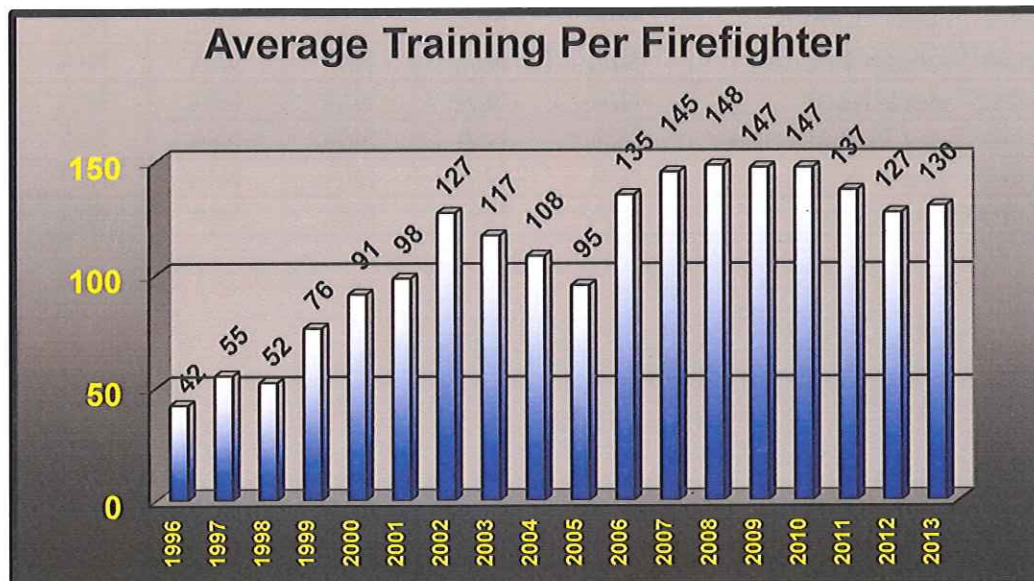
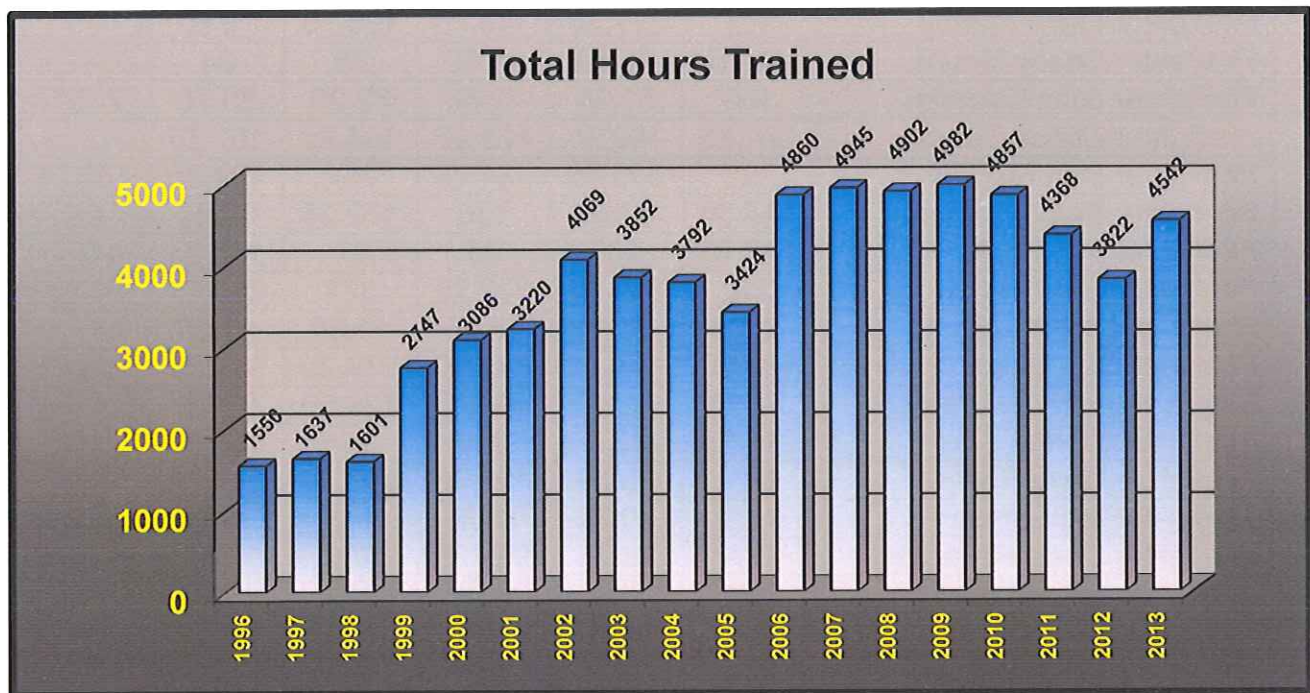
that this team would respond to. The rope skills developed and honed on this team transcend rope rescue and are used on almost every other rescue team. The majority of the rope rescue equipment is on Ladder 151. Assistant Chief Bill Brown, Lt. Greg Frenk, firefighters Gordy Lent, John Clawson and Steve Higgins are all trained rope rescue technicians. Lt. Troy Pitts, firefighters Dan Shinsky, and Ethan Little are trained to rope rescue operations level.

In addition to the Wellington Fire District's trained specialists, Lorain County also has a USAR (Urban Search & Rescue) response team that can be called on to utilize more of these highly trained technical firefighters. The Lorain County USAR team is trained to respond to High Angle Rope Rescue, Confined Space Rescue, Urban Search and Rescue and Trench Rescue.



Wellington Fire District Training and Activity Summary

	2005	2006	2007	2008	2009	2010	2011	2012	2013
FF's Trained:	36	36	34	33	34	33	32	30	35
Avg. Training Per FF:	95	135	145	148	147	147	137	127	130
FF's With >40 Hours:	23	25	30	26	28	29	25	27	32
FF's With >80 Hours:	17	20	22	19	23	26	23	22	25
FF's With >100 Hours:	15	20	19	19	18	23	22	19	24
FF's With >120 Hours:	11	17	19	17	17	21	22	16	20
FF's With >200 Hours:	4	11	9	10	10	8	7	4	7
FF's With >300 Hours:	1	2	2	4	5	1	2	1	0
Total Training Hours:	3,424	4,860	4,945	4,902	4,982	4,857	4,368	3,822	4,542



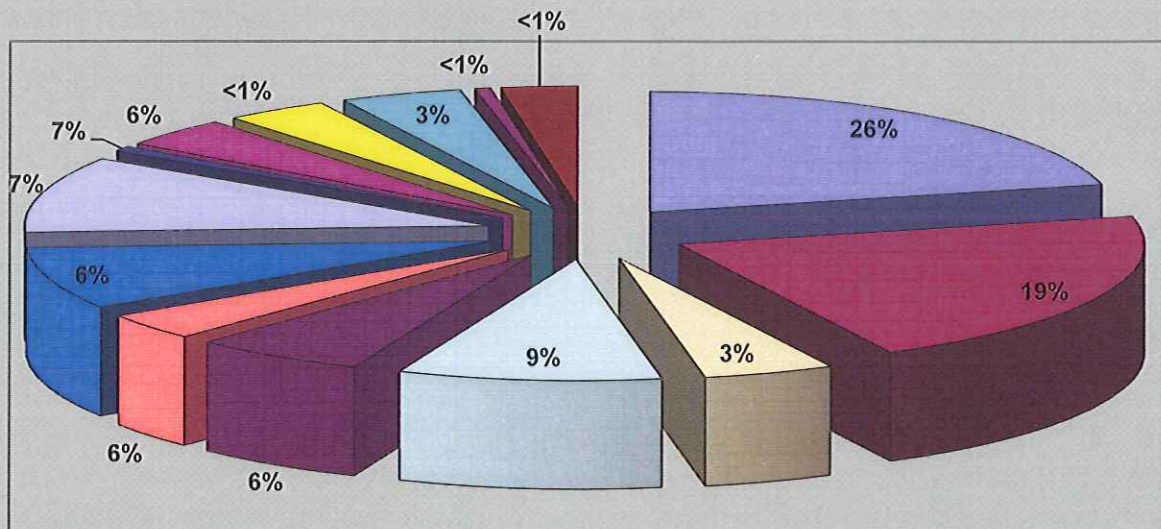
Wellington Fire District 2013 Training Analysis by Staff

Staff Member	2008	2009	2010	2011	2012	2013
Chief Mike Wetherbee	438	380.75	290.75	271.25	301	272.75
Assistant Chief Jim Clark	227.50	225.75	188.25	227.50	169.75	123
Assistant Chief Bill Brown	305.25	206.25	210.50	193.25	209	220.75
Lieutenant Troy Pitts	319	303.50	276.25	200.50	204.75	238
Lieutenant Brian Slack	292	266.25	277.50	230	163.75	66.25
Lieutenant Greg Frenk	193	186.25	293.25	324.75	195.75	207.5
Lieutenant Chad Regal	132	164.75	179.25	188.50	165.75	199
Firefighter Gordy Lent	168	160	178.75	120.75	94	120.25
Firefighter Scott Regal	199	183.75	187.25	159.50	144.25	139.25
Firefighter Dave Crawford	66.50	95.25	75.75	62.25	58	259
Firefighter Frank Marley	296	317.50	149.75	133.75	75.50	25
Firefighter Casey Moore	34.75	20.50	16.50	18	24	19.75
Firefighter John Clawson	100	51.25	72.50	62.25	80.75	71.25
Firefighter Derick Oswald	174.25	189.75	125.25	104.25	107.75	76.25
Firefighter Dan Shinsky	222	205.75	181.75	151	134.25	135.25
Firefighter Bryan Hamer	117.50	98.50	130	122.25	88.50	84
Firefighter Tim Polen	142.75	189	95	84	137.25	41.75
Firefighter Ethan Little	358	314.25	320.25	322	266.75	231.5
Firefighter Steve Higgins	75.25	26.50	13.25	11.50	11.50	54.75
Firefighter Ed Thorn	183.50	194.75	132.50	179.25	111.75	106.75
Dispatcher / FF Bill Varner	79.75	105.25	104.75	128.50	82.75	26.25
Firefighter Darin Lewis	214.25	247.75	209	164	156.50	167.25
Firefighter Dave Roser	N/A	89.50	153.75	160.75	117.75	159
Firefighter Rich Smith	N/A	10.75	144	145	38.25	50.5
Firefighter Dusty Reynolds	N/A	96.75	201.25	206	125	105.75
Firefighter Mike Barlow	N/A	N/A	129	191	220.50	194
Firefighter Ken Knapp	N/A	N/A	N/A	N/A	68.50	253
Firefighter Mike Standen	N/A	N/A	N/A	N/A	122.25	104
Firefighter Tim Standen	N/A	N/A	N/A	N/A	121	111.5
Firefighter Jason Dumke	N/A	N/A	N/A	N/A	N/A	123.25
Firefighter Melissa Fuquay	N/A	N/A	N/A	N/A	N/A	126.75
Firefighter Tyler Abbey	N/A	N/A	N/A	N/A	N/A	45
Firefighter Tyler Honoshofsky	N/A	N/A	N/A	N/A	N/A	134.75
Firefighter Justen Tripp	N/A	N/A	N/A	N/A	N/A	126.25
Firefighter Steve Garn	N/A	N/A	N/A	N/A	N/A	122.75

Wellington Fire District 2013 Training by Category

Category	2009	2010	2011	2012	2013
Apparatus Maintenance	1,251.50	1,104	1,132.75	914.50	967.75
General Firefighting (Other)	520	1,058.50	822.50	755.50	965.25
Station Maintenance	483.50	437.75	379.25	388	416
Dive/Water Operations	465.50	420	270.75	289	379.5
Public Education	188.25	229	306.25	284	463.5
Officer Development	182.50	168.50	251.50	265.75	160
Driver's Training/Pump Operations	274	303.50	271.50	261	274.5
Technical Rescue	181	350	138.50	148	205.25
Hazardous Materials	106.75	81.75	28	124	24.5
Administrative Procedures	130.50	255.25	42.25	101.75	164.25
EMS	677.50	89	285	93	30.5
Strategic/Tactical Operations	98.50	89	142.50	73.75	192.5
Fire Instructor/Instruction	322.25	242.25	262	71.25	176.5
Certified Fire Safety Inspector	110	28.50	35.50	52.25	121.5

2013 Training by Category



■ App Maint	■ Gen FF	□ Tech Resc	□ Sta Maint	■ DT/Pump
■ Ofc Dev	■ Dive	□ Pub Ed	■ EMS	■ FF Instr
■ Admin	■ Strat/Op	■ HazMat	■ C.F.S.I.	

Wellington Fire District

Training Analysis by Staff

Class Date Between {01/01/2013} And {12/31/2013}

Category	# Classes	Pct of Classes	Hours	Pct of Hours
TAA-4008 ABBEY, TYLER				
CPAT Physical Agility Test	1	9.09%	2.00	4.44 %
FF1A Firefighter 1A Class	9	81.82%	42.00	93.33 %
FW03 SCBA Training	1	9.09%	1.00	2.22 %
Totals for Staff:		11	45.00	

MRB-3264 BARLOW, MIKE R

AD01 Administrative Procedures	1	1.19%	2.00	1.03 %
AD03 Public Education	8	9.52%	22.00	11.34 %
AD04 Station Maintenance	7	8.33%	14.00	7.22 %
AP10 Apparatus Check Procedures	20	23.81%	43.00	22.16 %
APPUMP Apparatus Pump Training	4	4.76%	4.50	2.32 %
DT01 General Driver Training	10	11.90%	9.75	5.03 %
FC10 Fire Behavior	1	1.19%	4.00	2.06 %
FC40 Strategic and Tactical Operations	6	7.14%	18.75	9.66 %
FP02 Specialized Equipment	3	3.57%	3.25	1.68 %
FV02 Fire Safety Inspector Training	1	1.19%	0.50	0.26 %
FV20 Vehicle Extrication	2	2.38%	3.50	1.80 %
FW02 Dive Training	2	2.38%	11.50	5.93 %
FW03 SCBA Training	1	1.19%	1.00	0.52 %
FW04 Search & Rescue	1	1.19%	2.75	1.42 %
FW11 Aerial Operations	1	1.19%	0.50	0.26 %
FW12 Hydrant Training	1	1.19%	2.25	1.16 %
FW13 Water Shuttle	1	1.19%	2.00	1.03 %
FW14 Truck Maintenance	3	3.57%	4.00	2.06 %
FW16 FarmMedic	1	1.19%	2.50	1.29 %
FW20 Rope Rescue-Awareness	1	1.19%	3.00	1.55 %
FW21 Rope Rescue-Operations	1	1.19%	1.50	0.77 %
FW22 Rope Rescue-Technician	1	1.19%	2.50	1.29 %
ICE Ice Rescue Technician	1	1.19%	8.00	4.12 %
LCDT Lorain County Dive Team	4	4.76%	22.25	11.47 %
LCSW Lorain County Swiftwater Team	1	1.19%	2.00	1.03 %
SW Swiftwater Awareness	1	1.19%	3.00	1.55 %
Totals for Staff:		84	194.00	

WHB-3479 BROWN, WILLIAM H

AD01 Administrative Procedures	3	4.17%	6.00	2.72 %
AD02 Fire Department Organization	6	8.33%	12.50	5.66 %
AD03 Public Education	12	16.67%	32.00	14.50 %
AD06 Fire Officer 1	1	1.39%	80.00	36.24 %
AP10 Apparatus Check Procedures	1	1.39%	1.50	0.68 %
DT01 General Driver Training	2	2.78%	2.50	1.13 %

Wellington Fire District

Training Analysis by Staff

Class Date Between {01/01/2013} And {12/31/2013}

Category	# Classes	Pct of Classes	Hours	Pct of Hours
WHB-3479 BROWN, WILLIAM H				
EM17 24-7 EMS Online Training	11	15.28%	16.50	7.47 %
FC10 Fire Behavior	1	1.39%	4.00	1.81 %
FC40 Strategic and Tactical Operations	4	5.56%	6.25	2.83 %
FFII Firefighter II Skills	1	1.39%	1.00	0.45 %
FI00 Fire Instruction Preparation	4	5.56%	8.00	3.62 %
FI01 Fire Inspections	1	1.39%	1.50	0.68 %
FI03 Fire Instruction	8	11.11%	16.75	7.59 %
FI73 Fire Extinguisher Training	2	2.78%	4.25	1.93 %
FIBOARD Fire Board Meeting	1	1.39%	1.50	0.68 %
FP02 Specialized Equipment	2	2.78%	1.75	0.79 %
FV02 Fire Safety Inspector Training	2	2.78%	6.50	2.94 %
FW03 SCBA Training	1	1.39%	1.00	0.45 %
FW12 Hydrant Training	1	1.39%	2.25	1.02 %
FW16 FarmMedic	1	1.39%	2.50	1.13 %
FW22 Rope Rescue-Technician	1	1.39%	2.50	1.13 %
HAZMAT 1 Hazmat Awareness	1	1.39%	1.50	0.68 %
LCSW Lorain County Swiftwater Team	1	1.39%	2.00	0.91 %
OFD Officer Leadership Development	3	4.17%	4.00	1.81 %
OFF 01 Officers Mtg/Training	1	1.39%	2.50	1.13 %
Totals for Staff:		72	220.75	

JEC-6142 CLARK, JAMES E

AD01 Administrative Procedures	2	2.99%	5.00	4.07 %
AD02 Fire Department Organization	4	5.97%	8.00	6.50 %
AD03 Public Education	4	5.97%	11.00	8.94 %
AD04 Station Maintenance	10	14.93%	19.75	16.06 %
AP10 Apparatus Check Procedures	15	22.39%	27.50	22.36 %
APPUMP Apparatus Pump Training	1	1.49%	1.50	1.22 %
DT01 General Driver Training	3	4.48%	2.00	1.63 %
FC40 Strategic and Tactical Operations	3	4.48%	4.25	3.46 %
FI00 Fire Instruction Preparation	1	1.49%	2.00	1.63 %
FI03 Fire Instruction	1	1.49%	2.00	1.63 %
FP02 Specialized Equipment	2	2.99%	1.75	1.42 %
FV02 Fire Safety Inspector Training	1	1.49%	0.50	0.41 %
FW04 Search & Rescue	1	1.49%	2.75	2.24 %
FW12 Hydrant Training	1	1.49%	2.25	1.83 %
FW13 Water Shuttle	1	1.49%	2.00	1.63 %
FW14 Truck Maintenance	11	16.42%	17.75	14.43 %
FW20 Rope Rescue-Awareness	1	1.49%	3.00	2.44 %
FW22 Rope Rescue-Technician	1	1.49%	2.50	2.03 %
OFD Officer Leadership Development	1	1.49%	1.00	0.81 %
OFF 01 Officers Mtg/Training	2	2.99	5.00	4.07

Wellington Fire District

Training Analysis by Staff

Class Date Between {01/01/2013} And {12/31/2013}

Category	# Classes	Pct of Classes	Hours	Pct of Hours
JEC-6142 CLARK, JAMES E				
SPEC Special Duty	1	1.49%	1.50	1.22 %
Totals for Staff:		67	123.00	

JRC-8915 CLAWSON, JOHN R				
AD01 Administrative Procedures	1	3.70%	2.00	2.81 %
AD03 Public Education	5	18.52%	16.50	23.16 %
DT01 General Driver Training	2	7.41%	2.50	3.51 %
FC40 Strategic and Tactical Operations	3	11.11%	4.25	5.96 %
FI03 Fire Instruction	3	11.11%	5.00	7.02 %
FP02 Specialized Equipment	2	7.41%	1.75	2.46 %
FV02 Fire Safety Inspector Training	1	3.70%	0.50	0.70 %
FW03 SCBA Training	1	3.70%	1.00	1.40 %
FW04 Search & Rescue	1	3.70%	2.75	3.86 %
FW16 FarmMedic	1	3.70%	2.50	3.51 %
FW17 Ropes & Knots	1	3.70%	2.00	2.81 %
FW20 Rope Rescue-Awareness	1	3.70%	3.00	4.21 %
FW22 Rope Rescue-Technician	1	3.70%	2.50	3.51 %
ICE Ice Rescue Technician	1	3.70%	8.00	11.23 %
LCDT Lorain County Dive Team	2	7.41%	10.00	14.04 %
LCSW Lorain County Swiftwater Team	1	3.70%	7.00	9.82 %
Totals for Staff:		27	71.25	

DRC-8028 CRAWFORD, DAVID R				
AD01 Administrative Procedures	1	0.93%	2.00	0.77 %
AD03 Public Education	8	7.41%	30.00	11.58 %
AD04 Station Maintenance	19	17.59%	41.00	15.83 %
AP10 Apparatus Check Procedures	21	19.44%	61.00	23.55 %
APPUMP Apparatus Pump Training	8	7.41%	12.50	4.83 %
DT01 General Driver Training	10	9.26%	12.00	4.63 %
FC10 Fire Behavior	1	0.93%	4.00	1.54 %
FC40 Strategic and Tactical Operations	4	3.70%	6.25	2.41 %
FI03 Fire Instruction	1	0.93%	2.00	0.77 %
FI73 Fire Extinguisher Training	1	0.93%	2.00	0.77 %
FP02 Specialized Equipment	4	3.70%	12.75	4.92 %
FV02 Fire Safety Inspector Training	1	0.93%	0.50	0.19 %
FW03 SCBA Training	1	0.93%	1.00	0.39 %
FW04 Search & Rescue	1	0.93%	2.75	1.06 %
FW05 Ladder Training	1	0.93%	0.50	0.19 %
FW11 Aerial Operations	1	0.93%	1.00	0.39 %
FW12 Hydrant Training	1	0.93%	2.25	0.87 %
FW13 Water Shuttle	1	0.93%	2.00	0.77 %

Wellington Fire District

Training Analysis by Staff

Class Date Between {01/01/2013} And {12/31/2013}

Category	# Classes	Pct of Classes	Hours	Pct of Hours
DRC-8028 CRAWFORD, DAVID R				
FW14 Truck Maintenance	16	14.81%	41.50	16.02 %
FW16 FarmMedic	1	0.93%	2.50	0.97 %
FW20 Rope Rescue-Awareness	1	0.93%	3.00	1.16 %
FW22 Rope Rescue-Technician	1	0.93%	2.50	0.97 %
HAZMAT 1 Hazmat Awareness	1	0.93%	1.50	0.58 %
ICE Ice Rescue Technician	1	0.93%	8.00	3.09 %
SPEC Special Duty	2	1.85%	4.50	1.74 %
Totals for Staff:			108	259.00

JAD-0920 DUMKE, JASON

AD03 Public Education	1	3.23%	5.00	4.06 %
AP10 Apparatus Check Procedures	3	9.68%	5.50	4.46 %
CPAT Physical Agility Test	1	3.23%	2.00	1.62 %
DT01 General Driver Training	1	3.23%	2.00	1.62 %
DT13 E.V.O.C.	1	3.23%	7.50	6.09 %
FF1 Firefighter 1 Skills	12	38.71%	59.25	48.07 %
FF1A Firefighter 1A Class	9	29.03%	38.00	30.83 %
FFISE Fire Fighter I Skills Exam	1	3.23%	1.00	0.81 %
FV20 Vehicle Extrication	1	3.23%	2.00	1.62 %
FW03 SCBA Training	1	3.23%	1.00	0.81 %
Totals for Staff:			31	123.25

GJF-7676 FRENK, GREGORY J

AD01 Administrative Procedures	1	1.08%	2.00	0.96 %
AD02 Fire Department Organization	2	2.15%	4.50	2.17 %
AD03 Public Education	5	5.38%	18.00	8.67 %
AD04 Station Maintenance	16	17.20%	18.50	8.92 %
AP02 Hose Testing	2	2.15%	3.50	1.69 %
AP10 Apparatus Check Procedures	18	19.35%	38.00	18.31 %
APPUMP Apparatus Pump Training	4	4.30%	4.50	2.17 %
DT01 General Driver Training	6	6.45%	6.50	3.13 %
FC10 Fire Behavior	1	1.08%	5.00	2.41 %
FC40 Strategic and Tactical Operations	4	4.30%	6.25	3.01 %
FI00 Fire Instruction Preparation	1	1.08%	2.00	0.96 %
FI03 Fire Instruction	3	3.23%	3.00	1.45 %
FP02 Specialized Equipment	2	2.15%	1.75	0.84 %
FV02 Fire Safety Inspector Training	1	1.08%	0.50	0.24 %
FW001 Rope Equipment Maintenance	1	1.08%	2.50	1.20 %
FW01 Boat Operations	1	1.08%	4.00	1.93 %
FW03 SCBA Training	1	1.08%	1.00	0.48 %
FW05 Ladder Training	1	1.08%	0.50	0.24 %

Wellington Fire District

Training Analysis by Staff

Class Date Between {01/01/2013} And {12/31/2013}

Category	# Classes	Pct of Classes	Hours	Pct of Hours
GJF-7676 FRENK, GREGORY J				
FW12 Hydrant Training	1	1.08%	2.25	1.08 %
FW13 Water Shuttle	1	1.08%	2.00	0.96 %
FW14 Truck Maintenance	4	4.30%	6.50	3.13 %
FW16 FarmMedic	1	1.08%	2.50	1.20 %
FW22 Rope Rescue-Technician	1	1.08%	2.50	1.20 %
ICE Ice Rescue Technician	1	1.08%	8.00	3.86 %
LCDT Lorain County Dive Team	7	7.53%	33.25	16.02 %
LCSW Lorain County Swiftwater Team	3	3.23%	11.50	5.54 %
OFD Officer Leadership Development	2	2.15%	12.00	5.78 %
OFF 01 Officers Mtg/Training	2	2.15%	5.00	2.41 %
Totals for Staff:		93	207.50	

MAF-0105 FUQUAY, MELISSA

AD03 Public Education	1	3.23%	5.00	3.94 %
AP10 Apparatus Check Procedures	2	6.45%	5.50	4.34 %
APPUMP Apparatus Pump Training	1	3.23%	0.50	0.39 %
CPAT Physical Agility Test	1	3.23%	2.00	1.58 %
DT01 General Driver Training	2	6.45%	2.50	1.97 %
DT13 E.V.O.C.	1	3.23%	7.50	5.92 %
FF1 Firefighter 1 Skills	12	38.71%	59.25	46.75 %
FF1A Firefighter 1A Class	9	29.03%	42.00	33.14 %
FFISE Fire Fighter I Skills Exam	1	3.23%	1.00	0.79 %
FV20 Vehicle Extrication	1	3.23%	1.50	1.18 %
Totals for Staff:		31	126.75	

SMG-1737 GARN, STEVE

AD03 Public Education	1	3.57%	5.00	4.07 %
AP10 Apparatus Check Procedures	1	3.57%	2.00	1.63 %
CPAT Physical Agility Test	1	3.57%	2.00	1.63 %
DT01 General Driver Training	1	3.57%	2.00	1.63 %
DT13 E.V.O.C.	1	3.57%	7.50	6.11 %
FF1 Firefighter 1 Skills	12	42.86%	59.25	48.27 %
FF1A Firefighter 1A Class	9	32.14%	42.00	34.22 %
FFISE Fire Fighter I Skills Exam	1	3.57%	1.00	0.81 %
FV20 Vehicle Extrication	1	3.57%	2.00	1.63 %
Totals for Staff:		28	122.75	

BMH-1897 HAMER, BRYAN M

AD01 Administrative Procedures	1	2.63%	2.00	2.38 %
AD03 Public Education	2	5.26%	9.00	10.71 %

Wellington Fire District

Training Analysis by Staff

Class Date Between {01/01/2013} And {12/31/2013}

Category	# Classes	Pct of Classes	Hours	Pct of Hours
BMH-1897 HAMER, BRYAN M				
AD04 Station Maintenance	6	15.79%	18.00	21.43 %
AP10 Apparatus Check Procedures	6	15.79%	9.50	11.31 %
APPUMP Apparatus Pump Training	1	2.63%	1.00	1.19 %
DT01 General Driver Training	3	7.89%	2.50	2.98 %
FC10 Fire Behavior	1	2.63%	2.00	2.38 %
FC40 Strategic and Tactical Operations	6	15.79%	18.75	22.32 %
FP02 Specialized Equipment	2	5.26%	1.75	2.08 %
FV02 Fire Safety Inspector Training	1	2.63%	0.50	0.60 %
FV20 Vehicle Extrication	1	2.63%	2.00	2.38 %
FW02 Dive Training	1	2.63%	2.00	2.38 %
FW04 Search & Rescue	1	2.63%	2.75	3.27 %
FW12 Hydrant Training	1	2.63%	2.25	2.68 %
FW14 Truck Maintenance	2	5.26%	2.50	2.98 %
FW16 FarmMedic	1	2.63%	2.50	2.98 %
FW20 Rope Rescue-Awareness	1	2.63%	3.00	3.57 %
LCSW Lorain County Swiftwater Team	1	2.63%	2.00	2.38 %

Totals for Staff: 38 84.00

SJH-3278 HIGGINS, STEPHEN

AD01 Administrative Procedures	1	4.76%	2.00	3.65 %
AD03 Public Education	3	14.29%	11.00	20.09 %
AP10 Apparatus Check Procedures	1	4.76%	3.00	5.48 %
DT01 General Driver Training	3	14.29%	4.50	8.22 %
FC10 Fire Behavior	2	9.52%	9.00	16.44 %
FC40 Strategic and Tactical Operations	2	9.52%	3.00	5.48 %
FI01 Fire Inspections	1	4.76%	1.50	2.74 %
FI03 Fire Instruction	1	4.76%	4.00	7.31 %
FP02 Specialized Equipment	2	9.52%	1.75	3.20 %
FV02 Fire Safety Inspector Training	1	4.76%	0.50	0.91 %
FW03 SCBA Training	1	4.76%	1.00	1.83 %
FW16 FarmMedic	1	4.76%	2.50	4.57 %
FW20 Rope Rescue-Awareness	1	4.76%	3.00	5.48 %
ICE Ice Rescue Technician	1	4.76%	8.00	14.61 %

Totals for Staff: 21 54.75

TAH-1009 HONOSHOFKY, TYLER

AD03 Public Education	2	5.88%	8.00	5.94 %
AD04 Station Maintenance	1	2.94%	1.50	1.11 %
AP10 Apparatus Check Procedures	4	11.76%	9.00	6.68 %
CPAT Physical Agility Test	1	2.94%	2.00	1.48 %
DT13 E.V.O.C.	1	2.94%	7.50	5.57 %

Wellington Fire District

Training Analysis by Staff

Class Date Between {01/01/2013} And {12/31/2013}

Category	# Classes	Pct of Classes	Hours	Pct of Hours
TAH-1009 HONOSHOFKY, TYLER				
FF1 Firefighter 1 Skills	12	35.29%	59.25	43.97 %
FF1A Firefighter 1A Class	9	26.47%	42.00	31.17 %
FFISE Fire Fighter I Skills Exam	1	2.94%	1.00	0.74 %
FV20 Vehicle Extrication	1	2.94%	2.00	1.48 %
FW03 SCBA Training	1	2.94%	1.00	0.74 %
FW14 Truck Maintenance	1	2.94%	1.50	1.11 %
Totals for Staff:	34		134.75	

KCK-9461 KNAPP, KENNETH C.				
AD03 Public Education	10	8.62%	25.00	9.88 %
AD04 Station Maintenance	26	22.41%	50.00	19.76 %
AP02 Hose Testing	2	1.72%	4.00	1.58 %
AP10 Apparatus Check Procedures	35	30.17%	81.50	32.21 %
APPUMP Apparatus Pump Training	2	1.72%	1.50	0.59 %
DT01 General Driver Training	9	7.76%	8.00	3.16 %
DT13 E.V.O.C.	2	1.72%	24.00	9.49 %
EM01 Emergency Medical Services	1	0.86%	2.00	0.79 %
EM13 Specialized Equipment	1	0.86%	6.00	2.37 %
FC10 Fire Behavior	2	1.72%	9.00	3.56 %
FP02 Specialized Equipment	1	0.86%	1.00	0.40 %
FV02 Fire Safety Inspector Training	1	0.86%	0.50	0.20 %
FW03 SCBA Training	1	0.86%	1.00	0.40 %
FW04 Search & Rescue	2	1.72%	6.75	2.67 %
FW11 Aerial Operations	1	0.86%	1.00	0.40 %
FW13 Water Shuttle	1	0.86%	2.00	0.79 %
FW14 Truck Maintenance	17	14.66%	19.25	7.61 %
FW22 Rope Rescue-Technician	1	0.86%	2.50	0.99 %
ICE Ice Rescue Technician	1	0.86%	8.00	3.16 %
Totals for Staff:	116		253.00	

GRL-2964 LENT, GORDON R				
AD01 Administrative Procedures	1	2.56%	2.00	1.66 %
AD03 Public Education	6	15.38%	21.50	17.88 %
AP10 Apparatus Check Procedures	2	5.13%	5.50	4.57 %
DT01 General Driver Training	2	5.13%	2.50	2.08 %
FC40 Strategic and Tactical Operations	4	10.26%	6.25	5.20 %
FI03 Fire Instruction	2	5.13%	8.00	6.65 %
FP02 Specialized Equipment	2	5.13%	1.75	1.46 %
FV02 Fire Safety Inspector Training	1	2.56%	0.50	0.42 %
FW01 Boat Operations	1	2.56%	4.00	3.33 %
FW03 SCBA Training	1	2.56%	1.00	0.83 %

Wellington Fire District

Training Analysis by Staff

Class Date Between {01/01/2013} And {12/31/2013}

Category	# Classes	Pct of Classes	Hours	Pct of Hours
GRL-2964 LENT, GORDON R				
FW04 Search & Rescue	1	2.56%	2.75	2.29 %
FW12 Hydrant Training	1	2.56%	2.25	1.87 %
FW16 FarmMedic	1	2.56%	2.50	2.08 %
FW20 Rope Rescue-Awareness	1	2.56%	3.00	2.49 %
FW21 Rope Rescue-Operations	1	2.56%	1.50	1.25 %
FW22 Rope Rescue-Technician	1	2.56%	2.50	2.08 %
ICE Ice Rescue Technician	1	2.56%	8.00	6.65 %
LCDT Lorain County Dive Team	7	17.95%	33.25	27.65 %
LCSW Lorain County Swiftwater Team	3	7.69%	11.50	9.56 %
Totals for Staff:		39	120.25	

DAL-2066 LEWIS, DARIN

AD01 Administrative Procedures	1	1.16%	2.00	1.20 %
AD03 Public Education	3	3.49%	9.50	5.68 %
AD04 Station Maintenance	14	16.28%	24.75	14.80 %
AP02 Hose Testing	1	1.16%	2.00	1.20 %
AP10 Apparatus Check Procedures	21	24.42%	39.00	23.32 %
APPUMP Apparatus Pump Training	4	4.65%	6.50	3.89 %
DT01 General Driver Training	7	8.14%	5.50	3.29 %
FC10 Fire Behavior	1	1.16%	4.00	2.39 %
FC40 Strategic and Tactical Operations	4	4.65%	6.25	3.74 %
FP02 Specialized Equipment	2	2.33%	1.75	1.05 %
FV02 Fire Safety Inspector Training	1	1.16%	0.50	0.30 %
FW03 SCBA Training	1	1.16%	1.00	0.60 %
FW11 Aerial Operations	1	1.16%	1.00	0.60 %
FW12 Hydrant Training	1	1.16%	2.25	1.35 %
FW13 Water Shuttle	2	2.33%	5.50	3.29 %
FW14 Truck Maintenance	18	20.93%	40.75	24.36 %
FW16 FarmMedic	1	1.16%	2.50	1.49 %
FW20 Rope Rescue-Awareness	1	1.16%	3.00	1.79 %
ICE Ice Rescue Technician	1	1.16%	8.00	4.78 %
SPEC Special Duty	1	1.16%	1.50	0.90 %
Totals for Staff:		86	167.25	

EDL-0642 LITTLE, ETHAN D

AD01 Administrative Procedures	1	0.76%	2.00	0.86 %
AD03 Public Education	9	6.82%	18.50	7.99 %
AD04 Station Maintenance	18	13.64%	30.25	13.07 %
AP02 Hose Testing	2	1.52%	2.50	1.08 %
AP10 Apparatus Check Procedures	29	21.97%	57.75	24.95 %
APPUMP Apparatus Pump Training	9	6.82%	7.00	3.02 %

Wellington Fire District

Training Analysis by Staff

Class Date Between {01/01/2013} And {12/31/2013}

Category	# Classes	Pct of Classes	Hours	Pct of Hours
EDL-0642 LITTLE, ETHAN D				
DT01 General Driver Training	18	13.64%	15.75	6.80 %
FC10 Fire Behavior	1	0.76%	4.00	1.73 %
FC40 Strategic and Tactical Operations	4	3.03%	6.25	2.70 %
FI00 Fire Instruction Preparation	1	0.76%	2.00	0.86 %
FI03 Fire Instruction	2	1.52%	4.75	2.05 %
FP02 Specialized Equipment	3	2.27%	2.25	0.97 %
FV02 Fire Safety Inspector Training	1	0.76%	0.50	0.22 %
FW02 Dive Training	1	0.76%	2.50	1.08 %
FW03 SCBA Training	1	0.76%	1.00	0.43 %
FW04 Search & Rescue	1	0.76%	2.75	1.19 %
FW09 Forcible Entry	1	0.76%	0.50	0.22 %
FW11 Aerial Operations	1	0.76%	0.50	0.22 %
FW12 Hydrant Training	1	0.76%	2.25	0.97 %
FW13 Water Shuttle	2	1.52%	5.50	2.38 %
FW14 Truck Maintenance	13	9.85%	15.00	6.48 %
FW16 FarmMedic	1	0.76%	2.50	1.08 %
FW20 Rope Rescue-Awareness	1	0.76%	3.00	1.30 %
FW22 Rope Rescue-Technician	1	0.76%	2.50	1.08 %
HZ00 HazMat Team/Advisory	5	3.79%	16.00	6.91 %
HZ03 Hazmat Technician	1	0.76%	2.00	0.86 %
ICE Ice Rescue Technician	1	0.76%	8.00	3.46 %
LCDT Lorain County Dive Team	2	1.52%	12.00	5.18 %
LCSW Lorain County Swiftwater Team	1	0.76%	2.00	0.86 %

Totals for Staff: 132 231.50

FTM-4278 MARLEY, FRANK T

AD01 Administrative Procedures	1	5.56%	2.00	8.00 %
AD04 Station Maintenance	4	22.22%	4.00	16.00 %
AP10 Apparatus Check Procedures	3	16.67%	6.00	24.00 %
DT01 General Driver Training	1	5.56%	0.50	2.00 %
FC40 Strategic and Tactical Operations	4	22.22%	6.25	25.00 %
FP02 Specialized Equipment	2	11.11%	1.75	7.00 %
FV02 Fire Safety Inspector Training	1	5.56%	0.50	2.00 %
FW14 Truck Maintenance	1	5.56%	1.00	4.00 %
FW20 Rope Rescue-Awareness	1	5.56%	3.00	12.00 %

Totals for Staff: 18 25.00

WCM-3191 MOORE, WILLIAM C

AD01 Administrative Procedures	1	9.09%	2.00	10.13 %
AD03 Public Education	1	9.09%	5.00	25.32 %
DT01 General Driver Training	1	9.09%	0.50	2.53 %

Wellington Fire District

Training Analysis by Staff

Class Date Between {01/01/2013} And {12/31/2013}

Category	# Classes	Pct of Classes	Hours	Pct of Hours
WCM-3191 MOORE, WILLIAM C				
FC40 Strategic and Tactical Operations	2	18.18%	2.25	11.39 %
FP02 Specialized Equipment	2	18.18%	1.75	8.86 %
FV02 Fire Safety Inspector Training	1	9.09%	0.50	2.53 %
FW12 Hydrant Training	1	9.09%	2.25	11.39 %
FW16 FarmMedic	1	9.09%	2.50	12.66 %
FW20 Rope Rescue-Awareness	1	9.09%	3.00	15.19 %
Totals for Staff:	11		19.75	

DJO-0649 OSWALD, DERICK J				
AD01 Administrative Procedures	1	2.17%	2.00	2.62 %
AD03 Public Education	12	26.09%	29.00	38.03 %
AD04 Station Maintenance	3	6.52%	6.00	7.87 %
AP02 Hose Testing	1	2.17%	0.50	0.66 %
AP10 Apparatus Check Procedures	7	15.22%	12.50	16.39 %
APPUMP Apparatus Pump Training	4	8.70%	3.50	4.59 %
DT01 General Driver Training	7	15.22%	6.00	7.87 %
FC40 Strategic and Tactical Operations	4	8.70%	6.25	8.20 %
FP02 Specialized Equipment	1	2.17%	0.75	0.98 %
FW09 Forcible Entry	1	2.17%	0.50	0.66 %
FW12 Hydrant Training	1	2.17%	2.25	2.95 %
FW14 Truck Maintenance	2	4.35%	1.50	1.97 %
FW16 FarmMedic	1	2.17%	2.50	3.28 %
FW20 Rope Rescue-Awareness	1	2.17%	3.00	3.93 %
Totals for Staff:	46		76.25	

TAP-4160 PITTS, TROY A				
AD01 Administrative Procedures	1	1.11%	2.00	0.84 %
AD02 Fire Department Organization	2	2.22%	4.50	1.89 %
AD03 Public Education	6	6.67%	27.00	11.34 %
AD04 Station Maintenance	11	12.22%	33.00	13.87 %
AP10 Apparatus Check Procedures	19	21.11%	31.50	13.24 %
APPUMP Apparatus Pump Training	1	1.11%	1.00	0.42 %
DT01 General Driver Training	9	10.00%	10.25	4.31 %
FC10 Fire Behavior	1	1.11%	4.00	1.68 %
FC40 Strategic and Tactical Operations	3	3.33%	5.00	2.10 %
FI00 Fire Instruction Preparation	2	2.22%	4.00	1.68 %
FI03 Fire Instruction	3	3.33%	8.00	3.36 %
FP02 Specialized Equipment	2	2.22%	2.50	1.05 %
FV02 Fire Safety Inspector Training	3	3.33%	21.50	9.03 %
FW20 Vehicle Extrication	3	3.33%	5.50	2.31 %
FW02 Dive Training	2	2.22%	4.50	1.89 %

Wellington Fire District

Training Analysis by Staff

Class Date Between {01/01/2013} And {12/31/2013}

Category	# Classes	Pct of Classes	Hours	Pct of Hours
TAP-4160 PITTS, TROY A				
FW04 Search & Rescue	1	1.11%	2.75	1.16 %
FW11 Aerial Operations	1	1.11%	1.00	0.42 %
FW12 Hydrant Training	1	1.11%	2.25	0.95 %
FW14 Truck Maintenance	4	4.44%	4.50	1.89 %
FW16 FarmMedic	1	1.11%	2.50	1.05 %
FW17 Ropes & Knots	1	1.11%	2.00	0.84 %
FW21 Rope Rescue-Operations	1	1.11%	1.50	0.63 %
FW22 Rope Rescue-Technician	1	1.11%	2.50	1.05 %
ICE Ice Rescue Technician	1	1.11%	8.00	3.36 %
LCDT Lorain County Dive Team	5	5.56%	26.75	11.24 %
LCSW Lorain County Swiftwater Team	1	1.11%	2.00	0.84 %
OFD Officer Leadership Development	1	1.11%	10.00	4.20 %
OFF O1 Officers Mtg/Training	2	2.22%	5.00	2.10 %
SW Swiftwater Awareness	1	1.11%	3.00	1.26 %
Totals for Staff:	90		238.00	

TSP-5843 POLEN, TIMOTHY S

AD03 Public Education	2	9.09%	7.50	17.96 %
AP02 Hose Testing	1	4.55%	1.50	3.59 %
AP10 Apparatus Check Procedures	6	27.27%	10.00	23.95 %
APPUMP Apparatus Pump Training	1	4.55%	0.50	1.20 %
DT01 General Driver Training	1	4.55%	0.50	1.20 %
FC10 Fire Behavior	1	4.55%	4.00	9.58 %
FC40 Strategic and Tactical Operations	1	4.55%	2.00	4.79 %
FP02 Specialized Equipment	1	4.55%	1.00	2.40 %
FV02 Fire Safety Inspector Training	1	4.55%	0.50	1.20 %
FW03 SCBA Training	1	4.55%	1.00	2.40 %
FW12 Hydrant Training	1	4.55%	2.25	5.39 %
FW13 Water Shuttle	1	4.55%	2.00	4.79 %
FW14 Truck Maintenance	1	4.55%	1.00	2.40 %
FW16 FarmMedic	1	4.55%	2.50	5.99 %
FW20 Rope Rescue-Awareness	1	4.55%	3.00	7.19 %
FW22 Rope Rescue-Technician	1	4.55%	2.50	5.99 %
Totals for Staff:	22		41.75	

CLR-5299 REGAL, CHAD L

AD01 Administrative Procedures	1	1.05%	2.00	1.01 %
AD02 Fire Department Organization	2	2.11%	4.50	2.26 %
AD03 Public Education	5	5.26%	15.00	7.54 %
AD04 Station Maintenance	10	10.53%	14.50	7.29 %
AP10 Apparatus Check Procedures	26	27.37%	51.50	25.88 %

Wellington Fire District

Training Analysis by Staff

Class Date Between {01/01/2013} And {12/31/2013}

Category	# Classes	Pct of Classes	Hours	Pct of Hours
CLR-5299 REGAL, CHAD L				
APPUMP Apparatus Pump Training	5	5.26%	2.50	1.26 %
BC01 General Building Construction	1	1.05%	2.00	1.01 %
DT01 General Driver Training	9	9.47%	6.00	3.02 %
FC10 Fire Behavior	1	1.05%	4.00	2.01 %
FC40 Strategic and Tactical Operations	7	7.37%	9.25	4.65 %
FI00 Fire Instruction Preparation	2	2.11%	4.00	2.01 %
FI01 Fire Inspections	1	1.05%	1.50	0.75 %
FI03 Fire Instruction	2	2.11%	6.00	3.02 %
FP02 Specialized Equipment	2	2.11%	1.75	0.88 %
FV02 Fire Safety Inspector Training	2	2.11%	25.50	12.81 %
FW03 SCBA Training	1	1.05%	1.00	0.50 %
FW04 Search & Rescue	1	1.05%	2.75	1.38 %
FW11 Aerial Operations	3	3.16%	1.50	0.75 %
FW12 Hydrant Training	1	1.05%	2.25	1.13 %
FW14 Truck Maintenance	4	4.21%	6.50	3.27 %
FW16 FarmMedic	1	1.05%	2.50	1.26 %
FW20 Rope Rescue-Awareness	1	1.05%	3.00	1.51 %
FW22 Rope Rescue-Technician	1	1.05%	2.50	1.26 %
ICE Ice Rescue Technician	1	1.05%	8.00	4.02 %
LCSW Lorain County Swiftwater Team	1	1.05%	2.00	1.01 %
OFD Officer Leadership Development	2	2.11%	12.00	6.03 %
OFF 01 Officers Mtg/Training	2	2.11%	5.00	2.51 %

Totals for Staff: 95 199.00

SJR-3750 REGAL, SCOTT J

AD03 Public Education	4	5.13%	13.00	9.34 %
AD04 Station Maintenance	20	25.64%	38.00	27.29 %
AP10 Apparatus Check Procedures	27	34.62%	54.25	38.96 %
DT01 General Driver Training	9	11.54%	8.25	5.92 %
FC40 Strategic and Tactical Operations	4	5.13%	7.25	5.21 %
FI01 Fire Inspections	1	1.28%	3.00	2.15 %
FP02 Specialized Equipment	2	2.56%	1.75	1.26 %
FV02 Fire Safety Inspector Training	1	1.28%	0.50	0.36 %
FW03 SCBA Training	1	1.28%	1.00	0.72 %
FW12 Hydrant Training	1	1.28%	2.25	1.62 %
FW13 Water Shuttle	1	1.28%	2.00	1.44 %
FW14 Truck Maintenance	5	6.41%	3.00	2.15 %
FW16 FarmMedic	1	1.28%	2.50	1.80 %
FW22 Rope Rescue-Technician	1	1.28%	2.50	1.80 %

Totals for Staff: 78 139.25

Wellington Fire District

Training Analysis by Staff

Class Date Between {01/01/2013} And {12/31/2013}

Category	# Classes	Pct of Classes	Hours	Pct of Hours
DJR-6944 REYNOLDS, DUSTIN JAY				
AD01 Administrative Procedures	1	1.69%	2.00	1.89 %
AD03 Public Education	1	1.69%	4.00	3.78 %
AD04 Station Maintenance	6	10.17%	8.25	7.80 %
AP02 Hose Testing	1	1.69%	2.00	1.89 %
AP10 Apparatus Check Procedures	14	23.73%	32.00	30.26 %
APPUMP Apparatus Pump Training	5	8.47%	3.00	2.84 %
DT01 General Driver Training	10	16.95%	8.50	8.04 %
FC10 Fire Behavior	1	1.69%	4.00	3.78 %
FC40 Strategic and Tactical Operations	5	8.47%	7.75	7.33 %
FP02 Specialized Equipment	2	3.39%	1.75	1.65 %
FV02 Fire Safety Inspector Training	1	1.69%	0.50	0.47 %
FW02 Dive Training	1	1.69%	2.50	2.36 %
FW03 SCBA Training	1	1.69%	1.00	0.95 %
FW04 Search & Rescue	1	1.69%	2.75	2.60 %
FW12 Hydrant Training	1	1.69%	2.25	2.13 %
FW13 Water Shuttle	1	1.69%	2.00	1.89 %
FW14 Truck Maintenance	4	6.78%	7.00	6.62 %
FW16 FarmMedic	1	1.69%	2.50	2.36 %
ICE Ice Rescue Technician	1	1.69%	8.00	7.57 %
SPEC Special Duty	1	1.69%	4.00	3.78 %
Totals for Staff:		59	105.75	

DMR-8938 ROSER, DAVID

AD01 Administrative Procedures	1	1.16%	2.00	1.26 %
AD03 Public Education	3	3.49%	10.00	6.29 %
AD04 Station Maintenance	19	22.09%	26.50	16.67 %
AP02 Hose Testing	1	1.16%	2.00	1.26 %
AP10 Apparatus Check Procedures	19	22.09%	37.00	23.27 %
APPUMP Apparatus Pump Training	6	6.98%	4.50	2.83 %
DT01 General Driver Training	9	10.47%	9.00	5.66 %
FC40 Strategic and Tactical Operations	4	4.65%	6.25	3.93 %
FP02 Specialized Equipment	5	5.81%	13.25	8.33 %
FV02 Fire Safety Inspector Training	1	1.16%	0.50	0.31 %
FW03 SCBA Training	1	1.16%	1.00	0.63 %
FW04 Search & Rescue	1	1.16%	2.75	1.73 %
FW11 Aerial Operations	1	1.16%	0.50	0.31 %
FW12 Hydrant Training	1	1.16%	2.25	1.42 %
FW13 Water Shuttle	1	1.16%	2.00	1.26 %
FW14 Truck Maintenance	5	5.81%	5.50	3.46 %
FW16 FarmMedic	1	1.16%	2.50	1.57 %
FW20 Rope Rescue-Awareness	1	1.16%	3.00	1.89 %
FW22 Rope Rescue-Technician	1	1.16	2.50	1.57

Wellington Fire District

Training Analysis by Staff

Class Date Between {01/01/2013} And {12/31/2013}

Category	# Classes	Pct of Classes	Hours	Pct of Hours
DMR-8938 ROSER, DAVID				
ICE Ice Rescue Technician	1	1.16%	8.00	5.03 %
LCDT Lorain County Dive Team	2	2.33%	10.00	6.29 %
LCSW Lorain County Swiftwater Team	1	1.16%	7.00	4.40 %
SPEC Special Duty	1	1.16%	1.00	0.63 %
Totals for Staff:		86	159.00	

DLS-6393 SHINSKY, DANIEL L				
AD01 Administrative Procedures	1	1.12%	2.00	1.48 %
AD03 Public Education	2	2.25%	6.50	4.81 %
AD04 Station Maintenance	11	12.36%	16.50	12.20 %
AP10 Apparatus Check Procedures	28	31.46%	48.25	35.67 %
APPUMP Apparatus Pump Training	3	3.37%	2.50	1.85 %
DT01 General Driver Training	10	11.24%	6.75	4.99 %
FC40 Strategic and Tactical Operations	5	5.62%	5.75	4.25 %
FP02 Specialized Equipment	1	1.12%	0.75	0.55 %
FV02 Fire Safety Inspector Training	17	19.10%	29.00	21.44 %
FW03 SCBA Training	1	1.12%	1.00	0.74 %
FW04 Search & Rescue	1	1.12%	2.75	2.03 %
FW11 Aerial Operations	2	2.25%	1.00	0.74 %
FW14 Truck Maintenance	3	3.37%	2.50	1.85 %
FW16 FarmMedic	1	1.12%	2.50	1.85 %
FW20 Rope Rescue-Awareness	1	1.12%	3.00	2.22 %
FW22 Rope Rescue-Technician	1	1.12%	2.50	1.85 %
LCSW Lorain County Swiftwater Team	1	1.12%	2.00	1.48 %
Totals for Staff:		89	135.25	

BLS-2966 SLACK, BRIAN L				
AD04 Station Maintenance	6	23.08%	10.00	15.09 %
AP10 Apparatus Check Procedures	4	15.38%	8.00	12.08 %
DT01 General Driver Training	1	3.85%	1.00	1.51 %
FC40 Strategic and Tactical Operations	3	11.54%	4.25	6.42 %
FI03 Fire Instruction	1	3.85%	8.00	12.08 %
FP02 Specialized Equipment	1	3.85%	0.75	1.13 %
FW04 Search & Rescue	1	3.85%	2.75	4.15 %
FW14 Truck Maintenance	5	19.23%	9.00	13.58 %
HZ00 HazMat Team/Advisory	1	3.85%	2.00	3.02 %
ICE Ice Rescue Technician	1	3.85%	8.00	12.08 %
OFD Officer Leadership Development	1	3.85%	10.00	15.09 %
OFF 01 Officers Mtg/Training	1	3.85%	2.50	3.77 %
Totals for Staff:		26	66.25	

Wellington Fire District

Training Analysis by Staff

Class Date Between {01/01/2013} And {12/31/2013}

Category	# Classes	Pct of Classes	Hours	Pct of Hours
RSS-7830 SMITH, RICHARD S.				
AD01 Administrative Procedures	1	5.00%	2.00	3.96 %
AD03 Public Education	5	25.00%	17.50	34.65 %
DT01 General Driver Training	1	5.00%	0.50	0.99 %
FC40 Strategic and Tactical Operations	5	25.00%	17.50	34.65 %
FP02 Specialized Equipment	2	10.00%	1.75	3.47 %
FV02 Fire Safety Inspector Training	1	5.00%	0.50	0.99 %
FW03 SCBA Training	1	5.00%	1.00	1.98 %
FW12 Hydrant Training	1	5.00%	2.25	4.46 %
FW13 Water Shuttle	1	5.00%	2.00	3.96 %
FW16 FarmMedic	1	5.00%	2.50	4.95 %
FW20 Rope Rescue-Awareness	1	5.00%	3.00	5.94 %
Totals for Staff:		20	50.50	

MSS-8545 STANDEN, MICHAEL S.				
AD01 Administrative Procedures	1	2.38%	2.00	1.92 %
AD03 Public Education	2	4.76%	9.00	8.65 %
AD04 Station Maintenance	6	14.29%	12.00	11.54 %
AP10 Apparatus Check Procedures	9	21.43%	22.50	21.63 %
APPUMP Apparatus Pump Training	2	4.76%	2.50	2.40 %
DT01 General Driver Training	1	2.38%	0.50	0.48 %
FC10 Fire Behavior	1	2.38%	4.00	3.85 %
FC40 Strategic and Tactical Operations	3	7.14%	4.25	4.09 %
FF1 Firefighter 1 Skills	3	7.14%	18.00	17.31 %
FP02 Specialized Equipment	3	7.14%	3.25	3.13 %
FV02 Fire Safety Inspector Training	1	2.38%	0.50	0.48 %
FW03 SCBA Training	1	2.38%	1.00	0.96 %
FW04 Search & Rescue	1	2.38%	2.75	2.64 %
FW12 Hydrant Training	1	2.38%	2.25	2.16 %
FW13 Water Shuttle	1	2.38%	2.00	1.92 %
FW14 Truck Maintenance	2	4.76%	1.50	1.44 %
FW16 FarmMedic	1	2.38%	2.50	2.40 %
FW20 Rope Rescue-Awareness	1	2.38%	3.00	2.88 %
FW22 Rope Rescue-Technician	1	2.38%	2.50	2.40 %
ICE Ice Rescue Technician	1	2.38%	8.00	7.69 %
Totals for Staff:		42	104.00	

TAS-3641 STANDEN, TIMOTHY A.				
AD01 Administrative Procedures	1	2.27%	2.00	1.79 %
AD03 Public Education	7	15.91%	20.50	18.39 %
AD04 Station Maintenance	3	6.82%	5.50	4.93 %
AP10 Apparatus Check Procedures	8	18.18%	18.50	16.59 %

Wellington Fire District

Training Analysis by Staff

Class Date Between {01/01/2013} And {12/31/2013}

Category	# Classes	Pct of Classes	Hours	Pct of Hours
TAS-3641 STANDEN, TIMOTHY A.				
DT01 General Driver Training	2	4.55%	1.00	0.90 %
FC10 Fire Behavior	1	2.27%	4.00	3.59 %
FC40 Strategic and Tactical Operations	4	9.09%	6.25	5.61 %
FF1 Firefighter 1 Skills	3	6.82%	18.00	16.14 %
FP02 Specialized Equipment	2	4.55%	1.75	1.57 %
FV02 Fire Safety Inspector Training	1	2.27%	0.50	0.45 %
FW001 Rope Equipment Maintenance	1	2.27%	2.50	2.24 %
FW04 Search & Rescue	2	4.55%	6.75	6.05 %
FW12 Hydrant Training	1	2.27%	2.25	2.02 %
FW13 Water Shuttle	1	2.27%	2.00	1.79 %
FW14 Truck Maintenance	3	6.82%	4.00	3.59 %
FW16 FarmMedic	1	2.27%	2.50	2.24 %
FW20 Rope Rescue-Awareness	1	2.27%	3.00	2.69 %
FW22 Rope Rescue-Technician	1	2.27%	2.50	2.24 %
ICE Ice Rescue Technician	1	2.27%	8.00	7.17 %

Totals for Staff: 44 111.50

ENT-2269 THORN, ED N

AD01 Administrative Procedures	1	1.85%	2.00	1.87 %
AD03 Public Education	2	3.70%	8.00	7.49 %
AD04 Station Maintenance	9	16.67%	13.00	12.18 %
AP10 Apparatus Check Procedures	19	35.19%	36.75	34.43 %
APPUMP Apparatus Pump Training	1	1.85%	1.50	1.41 %
DT01 General Driver Training	8	14.81%	7.25	6.79 %
FC40 Strategic and Tactical Operations	5	9.26%	9.25	8.67 %
FP02 Specialized Equipment	1	1.85%	0.75	0.70 %
FW03 SCBA Training	1	1.85%	1.00	0.94 %
FW13 Water Shuttle	1	1.85%	2.00	1.87 %
FW14 Truck Maintenance	2	3.70%	4.00	3.75 %
FW16 FarmMedic	1	1.85%	2.50	2.34 %
FW20 Rope Rescue-Awareness	1	1.85%	3.00	2.81 %
ICE Ice Rescue Technician	1	1.85%	8.00	7.49 %
TR1 Trench Rescue-Awareness	1	1.85%	7.75	7.26 %

Totals for Staff: 54 106.75

JMM-0528 TRIPP, JUSTEN M

AD03 Public Education	1	3.23%	5.00	3.96 %
AD04 Station Maintenance	2	6.45%	4.50	3.56 %
AP10 Apparatus Check Procedures	1	3.23%	1.50	1.19 %
CPAT Physical Agility Test	1	3.23%	2.00	1.58 %
DT01 General Driver Training	2	6.45%	2.50	1.98 %

Wellington Fire District

Training Analysis by Staff

Class Date Between {01/01/2013} And {12/31/2013}

Category	# Classes	Pct of Classes	Hours	Pct of Hours
JMM-0528 TRIPP, JUSTEN M				
DT13 E.V.O.C.	1	3.23%	7.50	5.94 %
FF1 Firefighter 1 Skills	12	38.71%	59.25	46.93 %
FF1A Firefighter 1A Class	9	29.03%	42.00	33.27 %
FFISE Fire Fighter I Skills Exam	1	3.23%	1.00	0.79 %
FW03 SCBA Training	1	3.23%	1.00	0.79 %
Totals for Staff:	31		126.25	

WWV-2308 VARNER, WILLIAM W				
AD03 Public Education	1	7.69%	4.00	15.24 %
AD04 Station Maintenance	3	23.08%	6.50	24.76 %
AP10 Apparatus Check Procedures	4	30.77%	8.50	32.38 %
DT01 General Driver Training	2	15.38%	2.00	7.62 %
FC40 Strategic and Tactical Operations	2	15.38%	2.25	8.57 %
FW20 Rope Rescue-Awareness	1	7.69%	3.00	11.43 %
Totals for Staff:	13		26.25	

GMW-3858 WETHERBEE, GLENN M				
AD01 Administrative Procedures	17	23.94%	30.00	11.00 %
AD02 Fire Department Organization	13	18.31%	44.25	16.22 %
AD03 Public Education	13	18.31%	35.50	13.02 %
DT01 General Driver Training	1	1.41%	0.50	0.18 %
EM01 Emergency Medical Services	2	2.82%	12.00	4.40 %
FC10 Fire Behavior	2	2.82%	10.00	3.67 %
FC40 Strategic and Tactical Operations	3	4.23%	4.25	1.56 %
FI02 Fire Instructor	3	4.23%	83.00	30.43 %
FI03 Fire Instruction	1	1.41%	4.00	1.47 %
FI73 Fire Extinguisher Training	1	1.41%	2.25	0.82 %
FIBOARD Fire Board Meeting	1	1.41%	1.50	0.55 %
FP02 Specialized Equipment	2	2.82%	1.75	0.64 %
FV02 Fire Safety Inspector Training	4	5.63%	21.50	7.88 %
FV03 LCAFI	1	1.41%	1.50	0.55 %
FW12 Hydrant Training	1	1.41%	2.25	0.82 %
FW20 Rope Rescue-Awareness	1	1.41%	3.00	1.10 %
HAZMAT 1 Hazmat Awareness	1	1.41%	1.50	0.55 %
ICE Ice Rescue Technician	1	1.41%	8.00	2.93 %
OFD Officer Leadership Development	1	1.41%	1.00	0.37 %
OFF 01 Officers Mtg/Training	2	2.82%	5.00	1.83 %
Totals for Staff:	71		272.75	

Grand Totals: 1,913

4,542.00